

**ELEVATION**

**DIMENSION TABLE**

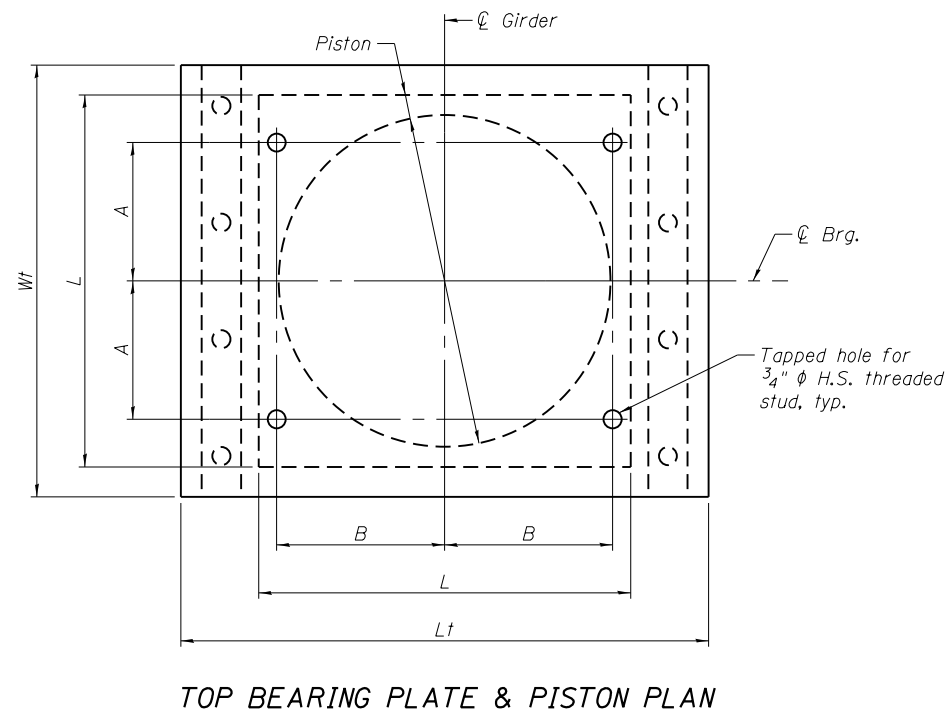
	Pier 5
A	7"
B	7"
C	12 3/4"
D	15 1/2"
L	15 1/2"
Wt	18"
Lt	22"
Wb	17 1/2"
Lb	29"
Tt	2 1/4"
Tb	1"
Th	9 1/4"

**DESIGN DATA**

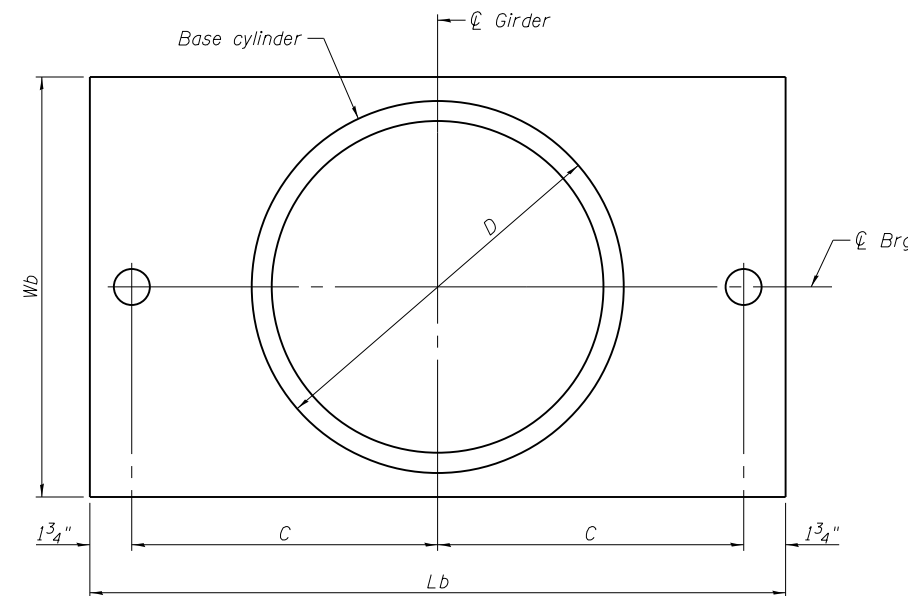
	Pier 5
Service Vertical Design Load (kips)	346
Service Lateral Design Load (kips)	42
Service Design Rotation (rad)	0.02
Total Required Movement (inch)	1"

**BEARING SHIM PLATES**

	Girder 1	Girder 2	Girder 3	Girder 4	Girder 5	Girder 6
Pier 5	-	-	-	1/4"	-	-



**TOP BEARING PLATE & PISTON PLAN**



**BOTTOM BEARING PLATE & BASE CYLINDER PLAN**

**Notes:**

- Anchor bolts shall be ASTM F1554 all-thread or an Engineer approved alternate material of the grade and diameter specified. The corresponding specified grade of AASHTO M314 anchor bolts may be used in lieu of ASTM F1554.
- Anchor bolts may be either cast in place or installed in drilled holes.
- Drilled and set anchor bolts shall be installed according to Article 521.06 of the Standard Specifications.
- As alternates to the bolted connection shown, the guide bars may be connected to the top bearing plate by groove welds or the guide bars and top bearing plate may be fabricated as a single piece.
- Base cylinder welds may be omitted if cylinder is recessed into bottom bearing plate.
- The structural steel plates of the Bearing Assembly shall conform to the requirements of AASHTO M 270 Grade 50W.
- Two 3/8 in. adjusting shims shall be provided for each bearing in addition to all other plates or shims and placed as shown on bearing details.

**GUIDED EXPANSION HLMR BEARING**  
(Pier 5)

**BILL OF MATERIAL**

Item	Unit	Total
High Load Multi-Rotational Bearings, Guided Expansion, 350K	Each	6
Anchor Bolts, 1"	Each	12



USER NAME =	DESIGNED - SJN	REVISED
	CHECKED - JAD	REVISED
PLOT SCALE =	DRAWN - JAD	REVISED
PLOT DATE =	CHECKED - SJN	REVISED

**STATE OF ILLINOIS**  
**DEPARTMENT OF TRANSPORTATION**

**BEARING DETAILS**  
**STRUCTURE NO. 048-0100**

SHEET NO. 34 OF 62 SHEETS

F.A.P. R.T.E.	SECTION	COUNTY	TOTAL SHEETS	SHEET NO.
626	(44-B-1)BR	KNOX	122	64
CONTRACT NO. 68759				

ILLINOIS FED. AID PROJECT