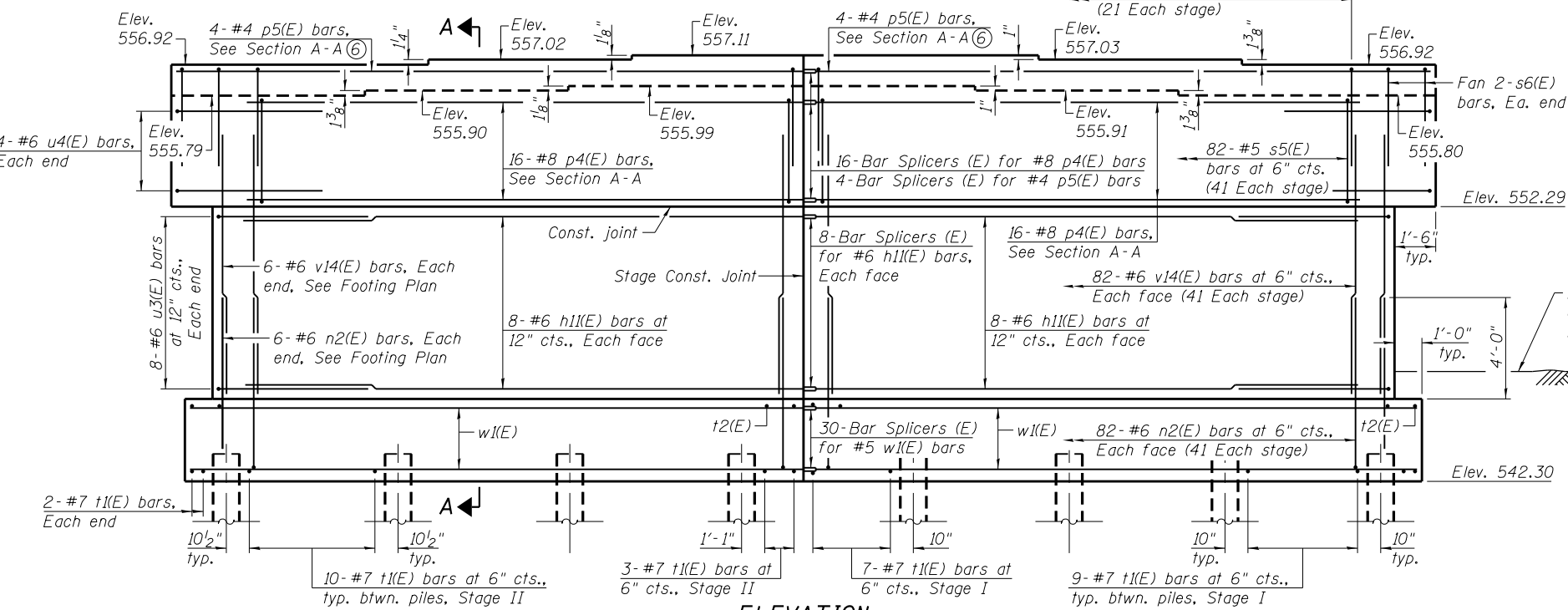
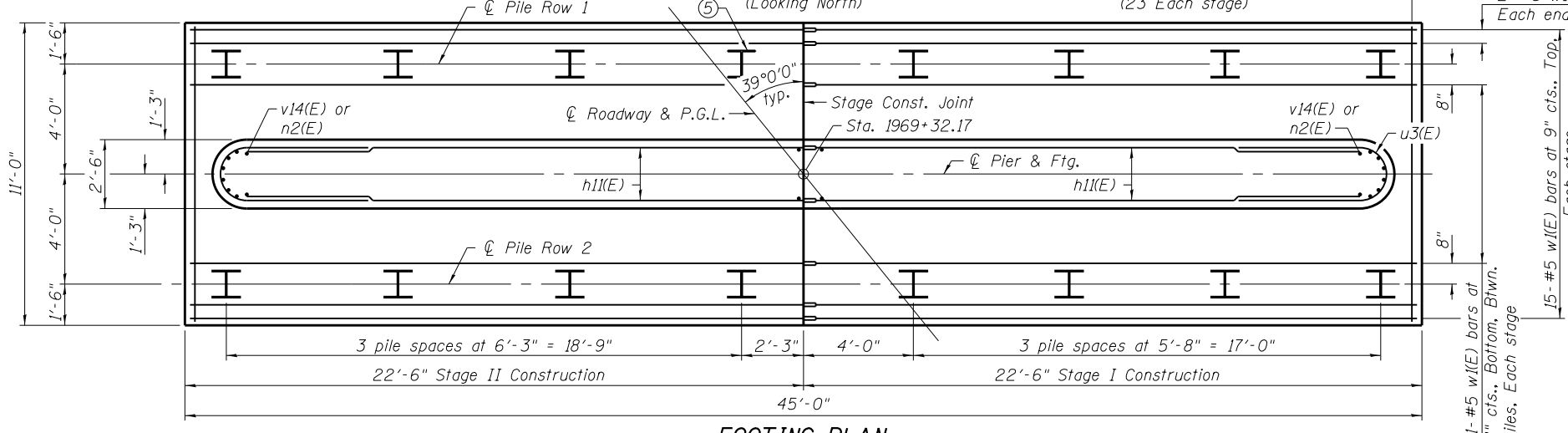


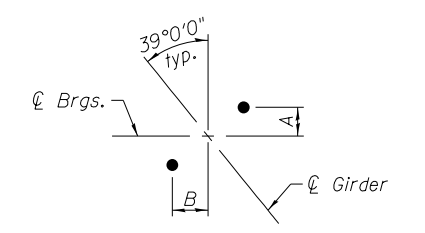
TOP PLAN



ELEVATION
(Looking North)

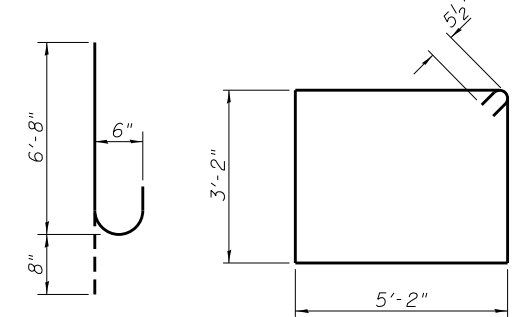


FOOTING PLAN



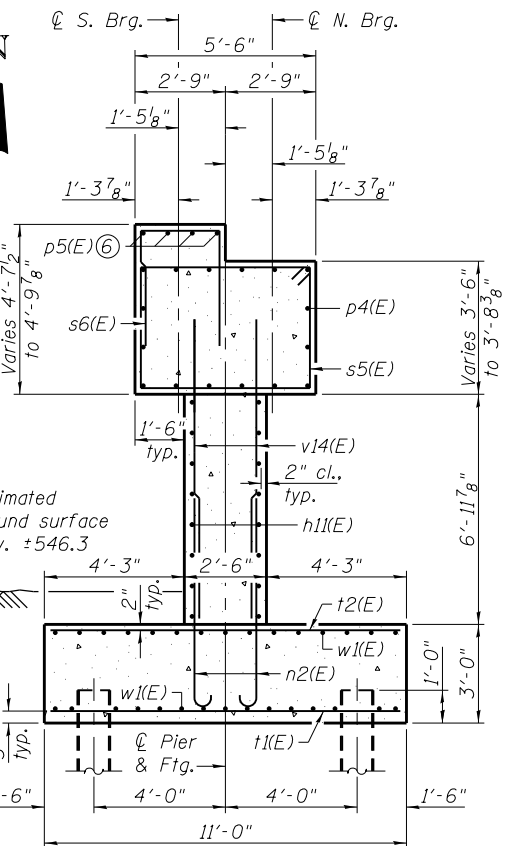
ANCHOR BOLT LAYOUT

	Dim. A	Dim. B
N. Brgs.	7 3/4"	9 1/2"
S. Brgs.	7 8"	8 3/4"

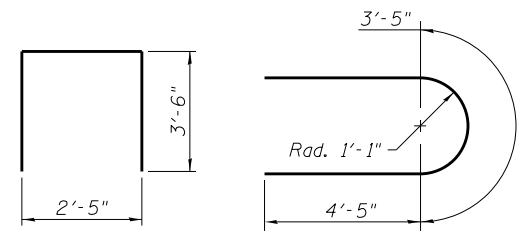


BAR n2(E)

BAR s5(E)

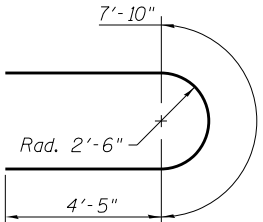


SECTION A-A



BAR s6(E)

BARS u3(E)



BARS u4(E)

BILL OF MATERIAL

Bar	No.	Size	Length	Shape
h1(E)	32	#6	20'-1"	—
n2(E)	176	#6	7'-4"	—
p4(E)	32	#8	20'-1"	—
p5(E)	8	#4	22'-8"	—
s5(E)	82	#5	17'-7"	□
s6(E)	46	#5	9'-5"	□
t1(E)	71	#7	10'-8"	—
t2(E)	46	#6	10'-8"	—
u3(E)	16	#6	12'-3"	—
u4(E)	8	#6	16'-8"	—
v14(E)	176	#6	9'-1"	—
w1(E)	60	#5	22'-2"	—
Structure Excavation		Cu. Yd.	109	
Concrete Structures		Cu. Yd.	120.5	
Reinforcement Bars, Epoxy Coated		Pound	13,260	
Furnishing Steel Piles HP12x53		Foot	420	
Driving Piles		Foot	420	
Test Pile Steel HP12x53		Each	1	
Concrete Sealer		Sq. Ft.	709	

PILE DATA

Type: Steel HP12x53
 Nominal Required Bearing: 419 kips
 Factored Resistance Available: 230 kips
 Est. Length: 28 ft
 No. Production Piles: 15
 No. Test Piles: 1

- Notes:
- ① Pour steps monolithically with cap.
 - ② For details of piles, see sheet 50 of 62.
 - ③ Space reinforcement in cap to miss anchor bolts.
 - ④ For details of Bar Splicers, see sheet 51 of 62.
 - ⑤ Indicated pile shall be driven during Stage I Construction.
 - ⑥ Cut to fit at end of cap.
 - ⑦ The pier shall have all exposed surfaces of the bridge seats and faces of pier cap treated with Concrete Sealer.



USER NAME =	DESIGNED - JAD	REVISED
PLOT SCALE =	CHECKED - SUN	REVISED
PLOT DATE =	DRAWN - DBB	REVISED
	CHECKED - SUN	REVISED

**STATE OF ILLINOIS
DEPARTMENT OF TRANSPORTATION**

**PIER 4 DETAILS
STRUCTURE NO. 048-0100**
SHEET NO. 46 OF 62 SHEETS

F.A.P. RTE.	SECTION	COUNTY	TOTAL SHEETS	SHEET NO.
626	(44-B-1)BR	KNOX	122	76
CONTRACT NO. 68759				
ILLINOIS FED. AID PROJECT				