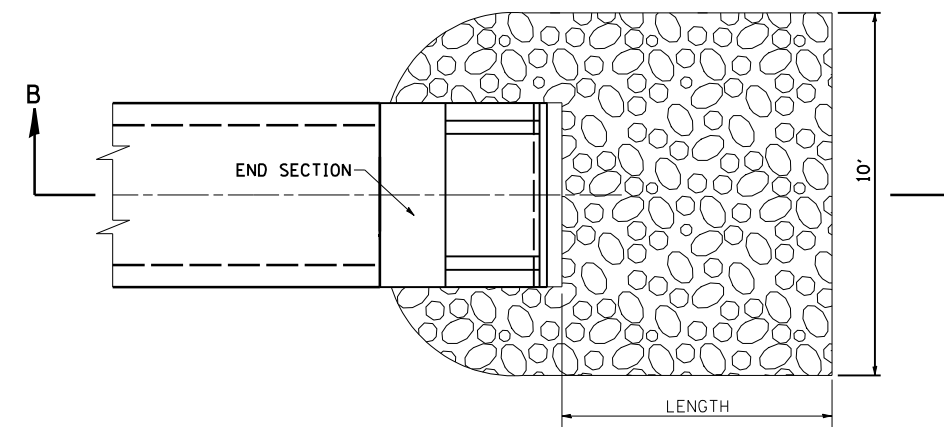


NOTE 1: USE 2' BEYOND THE END SECTION FOR 12" PIPES. SEE EROSION CONTROL PLANS FOR WIDTHS FOR ALL OTHER PIPE SIZES.

PIPE CULVERT

SEE CROSS SECTIONS AND EROSION CONTROL PLANS FOR LENGTH OF PROTECTION



SEE EROSION CONTROL PLANS FOR LENGTH OF PROTECTION

BOX CULVERT

TYPICAL RIPRAP DETAIL
NOT TO SCALE

FILE NAME = D468759-sht-details.dgn	USER NAME = default	DESIGNED - RGV	REVISED -
	PLOT TIME = 8:52:39 AM	DRAWN - RGV	REVISED -
	PLOT SCALE = 100.0000' / IN.	CHECKED - BPS	REVISED -
	PLOT DATE = 8/9/2013	DATE -	REVISED -

**STATE OF ILLINOIS
DEPARTMENT OF TRANSPORTATION**

CONSTRUCTION DETAILS			
SCALE:	SHEET 4	OF 4 SHEETS	STA. TO STA.

F.A.P. RTE.	SECTION	COUNTY	TOTAL SHEETS	SHEET NO.
626	(44-B-1) BR	KNOX	122	96
CONTRACT NO. 68759				
ILLINOIS FED. AID PROJECT				