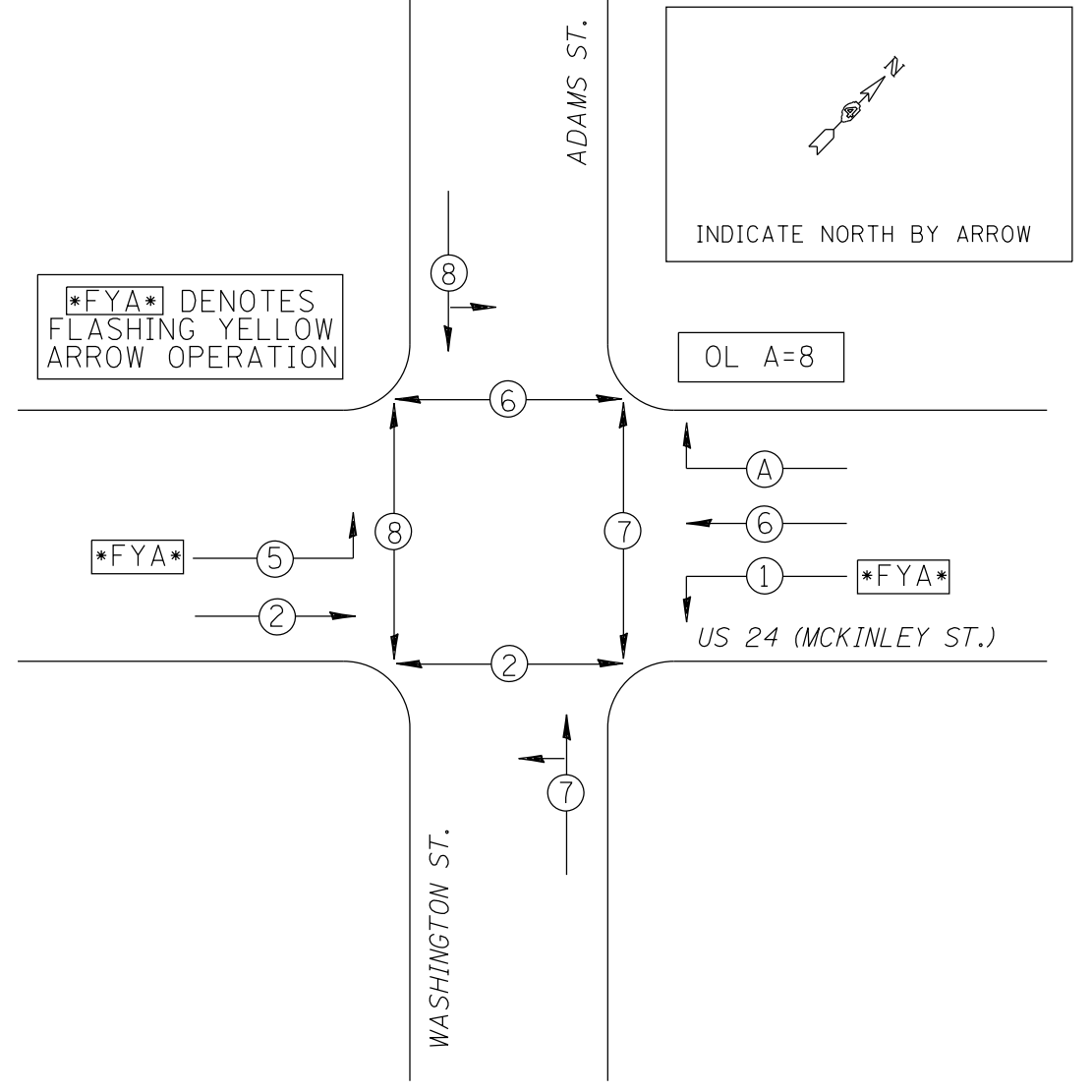
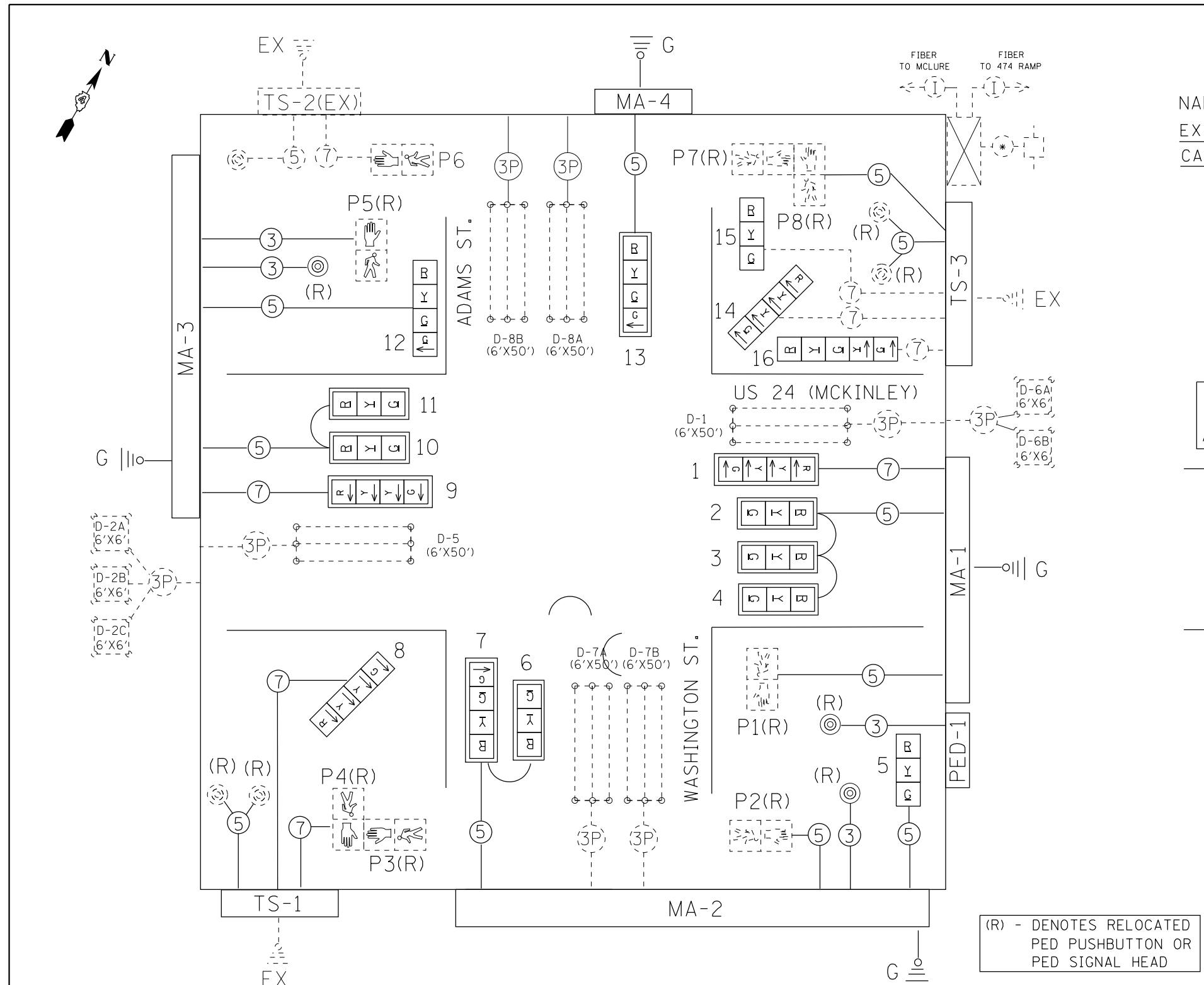
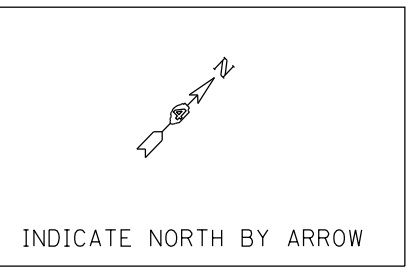


PROPOSED PHASE DIAGRAM

NAME OF INTERSECTION US 24 (MCKINLEY) & ADAMS/WASHINGTON
 EXISTING CONTROLLER: FAC (TS-2 TYPE 2) IN TYPE V
 CABINET, TS-1 BACKPANEL

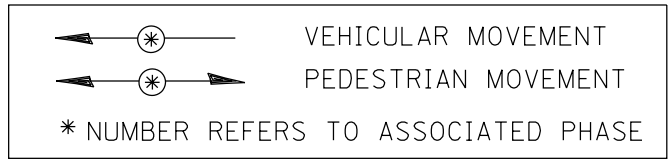


FYA DENOTES FLASHING YELLOW ARROW OPERATION



INDICATE NORTH BY ARROW

(R) - DENOTES RELOCATED PED PUSHBUTTON OR PED SIGNAL HEAD



ALL PROPOSED TRAFFIC SIGNAL MAST ARMS, CABINETS, HANDHOLES (LIDS AND FRAMES), AND EXPOSED METALLIC CONDUITS SHALL BE GROUNDED AND SAFETY BONDED IN ACCORDANCE WITH NEC REQUIREMENTS. EXISTING GROUND SAFETY BONDS SHALL BE REUSED WHENEVER POSSIBLE.

	EX. CONTROLLER (SIGNAL)		EX. #18 3-PR DETECTOR CABLE		EX. DETECTOR LOOP (6'X6')
	PROP. 3 SEC. SIG HEAD W/BACKPLATE		EX. 5/C NO. 14 SIGNAL CABLE		EX. DETECTOR LOOP (QUADRAPOLE)
	PROP. 3 SEC. SIGNAL HEAD		EX. 7/C NO. 14 SIGNAL CABLE		EX. SERVICE INSTALLATION
	EX. PEDESTRIAN SIGNAL HEAD		PROP. 5/C NO. 14 SIGNAL CABLE		EX. GROUND/SAFETY BOND
	EX. PEDESTRIAN PUSHBUTTON		PROP. 7/C NO. 14 SIGNAL CABLE		PROP. GROUND/SAFETY BOND