

| F.A.P. RTE. | SECTION | COUNTY | TOTAL SHEETS | SHEET NO. |
|-----------------------------|------------|-----------------|--------------|-----------|
| 317 | 46-1(TS-3) | PEORIA-TAZEWELL | 10 | 1 |
| ILLINOIS CONTRACT NO. 68B53 | | | | |

DEPARTMENT OF TRANSPORTATION

DIVISION OF HIGHWAYS

PROPOSED HIGHWAY PLANS

FAP 317 (US 24) SECTION 46-1(TS-3) PEORIA-TAZEWELL COUNTIES

C-94-060-13

D-94-035-13

- 1. COVER SHEET
- 2. CONSTRUCTION NOTES
- 3-4. SUMMARY OF QUANTITIES
- 5. EXISTING TRAFFIC SIGNALS AND REMOVAL PLAN
- 6. EXISTING TRAFFIC SIGNAL CABLE AND PHASE DIAGRAMS
- 7. PROPOSED TRAFFIC SIGNALS
- 8. PROPOSED TRAFFIC SIGNAL CABLE AND PHASE DIAGRAMS
- 9. MAST ARM LOADING DETAIL
- 10. LIGHT BOLLARD LED LAMP REPLACEMENT LOCATIONS

HIGHWAY STANDARDS

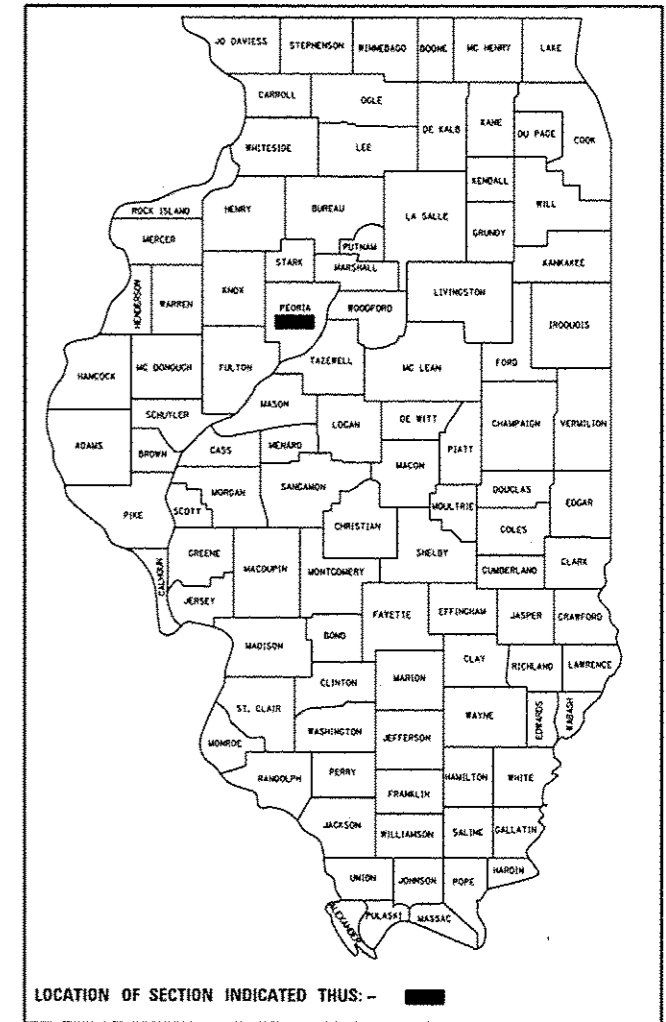
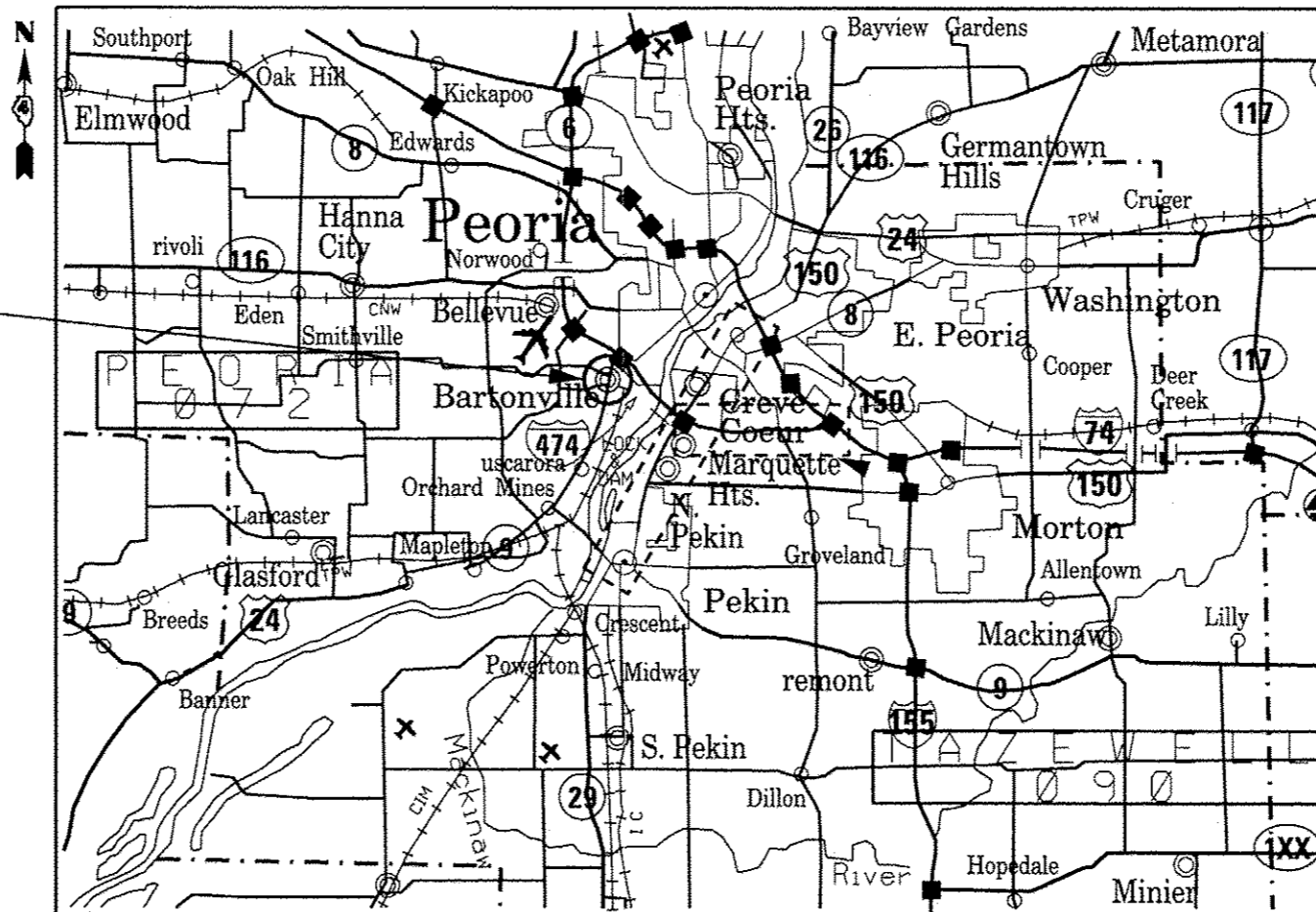
| | |
|-----------|-----------|
| 701001-02 | 814001-02 |
| 701006-04 | 814006-02 |
| 701101-03 | 873001-02 |
| 701106-02 | 876001-02 |
| 701601-08 | 877001-05 |
| 701701-08 | 877002-02 |
| 701901-02 | 878001-09 |
| | 880006-01 |

US 24 (MCKINLEY) & ADAMS/WASHINGTON VILLAGE OF BARTONVILLE

PROJECT DESCRIPTION

TRAFFIC SIGNAL MODERNIZATION AT US 24 (MCKINLEY) & ADAMS/WASHINGTON IN THE VILLAGE OF BARTONVILLE AND LIGHT BOLLARD LED REPLACEMENT AT VARIOUS LOCATIONS IN PEORIA AND TAZEWELL COUNTIES

J.U.L.I.E. JOINT UTILITY LOCATION INFORMATION FOR EXCAVATION 1-800-892-0123 OR 811



STATE OF ILLINOIS
DEPARTMENT OF TRANSPORTATION
DIVISION OF HIGHWAYS

SUBMITTED Sept 4 20 13

John D. Branzelli, PE, Inc.
DEPUTY DIRECTOR OF HIGHWAYS, REGION ENGINEER

October 4 20 13
John D. Branzelli, PE, Inc.
ENGINEER OF DESIGN AND ENVIRONMENT

October 4 20 13
Omer Osman, PE, Inc.
DIRECTOR OF HIGHWAYS, CHIEF ENGINEER

PRINTED BY THE AUTHORITY OF THE STATE OF ILLINOIS

PROJECT ENGINEER: ERIC HOWALD (309) 671-4481
PROJECT MANAGER: RANDY LANINGA (309) 671-4477
CATALOG NO. 34944-00D
CONTRACT NO. 68B53

CONSTRUCTION NOTES

1. ALL TRAFFIC SIGNAL SECTIONS SHALL HAVE 12" SINGLE LED LENSES.
2. THE RED SECTIONS OF THE SIGNAL HEADS SHARING THE SAME MAST ARM SHALL BE LEVEL WITH ONE ANOTHER AND MAINTAIN A 16 FT. MINIMUM CLEARANCE FROM THE HIGHEST POINT OF THE ROADWAY.
3. THE PROPOSED MAST ARM MOUNTED TRAFFIC SIGNAL HEADS SHALL BE MOUNTED DIRECTLY OVER THE CENTER OF THEIR RESPECTIVE LANES.
4. ALL TRAFFIC SIGNAL HEAD BRACKETS ARE TO BE ALUMINUM WITH A NATURAL FINISH.
5. ALL TRAFFIC SIGNAL POSTS ARE TO BE GALVANIZED STEEL.
6. PROPOSED HANDHOLES SHALL BE CAST IN PLACE CONCRETE HANDHOLES.
7. THE HANDHOLE SHALL BE CONSTRUCTED SO THAT THE TOP OF THE FRAME WILL BE FLUSH WITH THE SURFACE OF THE MEDIAN, SIDEWALK, OR GROUND LINE.
8. THE LOCATION OF ALL UTILITIES SHALL BE FIELD VERIFIED BY THE CONTRACTOR BEFORE THE INSTALLATION OF ANY TRAFFIC SIGNAL COMPONENTS.
9. COILABLE POLYETHYLENE DUCT MAY BE SUBSTITUTED FOR UNDERGROUND CONDUIT.
10. THE LOCATIONS FOR HANDHOLES, TRAFFIC SIGNAL POST FOUNDATIONS, AND MAST ARM FOUNDATIONS ARE PROVIDED FOR REFERENCE ONLY. THE ENGINEER OF TRAFFIC SHALL BE NOTIFIED FOR LOCATION VERIFICATION BEFORE INSTALLATION.
11. ALL SURPLUS MATERIALS SHALL BE DISPOSED OF IN ACCORDANCE WITH ARTICLE 202.03 OF THE STANDARD SPECIFICATION.
12. THE EXISTING TRAFFIC SIGNALS SHALL REMAIN IN OPERATION DURING THE CONSTRUCTION OF THE PROPOSED TRAFFIC SIGNALS.
13. ANY MAINTENANCE OF EXISTING TRAFFIC SIGNALS SHALL BE CONSIDERED EXTRA WORK IN ACCORDANCE WITH ARTICLE 109.04 OF THE STANDARD SPECIFICATIONS.
14. NO ADDITIONAL COMPENSATION SHALL BE ALLOWED FOR PLACING CONDUIT AT GREATER THAN 2 FT. MINIMUM DEPTH TO AVOID OBSTACLES SUCH AS UNDERGROUND UTILITIES.
15. THE CONTRACTOR IS RESPONSIBLE FOR THE COST OF UNCOVERING OR HAND DIGGING AROUND UTILITIES AS NECESSARY. THIS COST OF THIS WORK SHALL BE INCLUDED IN THE UNIT PRICES FOR THE CONDUITS.
16. ALL PROPOSED TRAFFIC SIGNAL MAST ARMS, POSTS, HANDHOLE LIDS AND RINGS, HANDHOLE FRAMES, CONTROLLER CABINETS, AND PHOTOCCELL RELAYS SHALL BE GROUNDED IN ACCORDANCE WITH NEC REQUIREMENTS.
17. THE CONTRACTOR SHALL BE RESPONSIBLE FOR LOCATING ALL EXISTING DEPARTMENT LIGHTING AND TRAFFIC SIGNAL FACILITIES. THIS WORK SHALL BE INCLUDED IN THE CONTRACT BID PRICE.
18. THE PROPOSED CONDUIT SHALL BE COUPLED TO THE EXISTING CONDUIT. THE COST OF THIS WORK SHALL BE INCLUDED IN THE CONTRACT UNIT PRICE FOR THE PROPOSED CONDUIT PAY ITEMS.
19. THE CONTRACTOR SHALL COVER ALL HOLES IN EXISTING TRAFFIC SIGNAL POSTS THAT ARE CAUSED BY THE REMOVAL OF PEDESTRIAN PUSHBUTTONS, SIGNS, AND SIGNAL HEADS BY UTILIZING POLYCARBONATE OR ALUMINUM PLUGS/PLATES. THE COST OF THIS WORK SHALL BE INCLUDED IN THE CONTRACT UNIT PRICE FOR REMOVE EXISTING TRAFFIC SIGNAL EQUIPMENT.
20. THE CONTRACTOR SHALL CUT ALL EXISTING ANCHOR BOLTS LOCATED IN ISLANDS FLUSH AND PLUG ALL CONDUITS WITH METAL PLUGS. THE COST OF THIS WORK SHALL BE INCLUDED IN THE CONTRACT UNIT PRICE FOR REMOVE EXISTING TRAFFIC SIGNAL EQUIPMENT.
21. THE CONTRACTOR SHALL FURISH AND INSTALL GALVANIZED STEEL CONDUIT AND FITTINGS AS REQUIRED TO TRANSITION THE PROPOSED 1" CONDUIT INTO THE EXISTING LIGHT POLE. ALL EXPOSED CONDUIT SHALL BE RIGID. THE COST OF THIS WORK SHALL BE INCLUDED IN THE CONTRACT UNIT PRICE FOR UNDERGROUND CONDUIT, PVC, 1" DIAMETER.

COMMITMENTS

THERE ARE NO COMMITMENTS MADE IN CONJUCTION WITH THIS PROJECT.

THE CONTRACTOR SHALL NOTIFY THE ENGINEER OF TRAFFIC, RANDY LANINGA, AT (309) 671-4477 TO OBTAIN APPROVAL FOR ALL MAST ARM AND TRAFFIC SIGNAL POST FOUNDATION LOCATIONS PRIOR TO CONSTRUCTION. THE CONTRACTOR SHALL BE LIABLE FOR ALL COSTS REQUIRED TO REMOVE OR RELOCATE FACILITIES THAT WERE CONSTRUCTED WITHOUT OBTAINING LOCATION APPROVAL.

| | | | | | | | | | | | |
|---------------------------------------|---------------------------------|------------------|-----------------|---|---|---------------------------|--------------------------|-----------------|-----------------|--------------|--|
| FILE NAME = | USER NAME = ka10br | DESIGNED - _____ | REVISED - _____ | STATE OF ILLINOIS DEPARTMENT OF TRANSPORTATION | COMMITMENTS AND CONSTRUCTION NOTES | F.A.P. RTE. | SECTION | COUNTY | TOTAL SHEETS | SHEET NO. | |
| C:\temp\68853 - US 24 & Adams Traffic | Signal Plans (Final 9-2-13).dgn | DRAWN - _____ | REVISED - _____ | | | 317 | 46-(TS-3) | PEORIA-TAZEWELL | 10 | 2 | |
| | PLOT SCALE = 48.0000" / in. | CHECKED - _____ | REVISED - _____ | | | CONTRACT NO. 68853 | | | | | |
| | PLOT DATE = 9/4/2013 | DATE - _____ | REVISED - _____ | | | ILLINOIS FED. AID PROJECT | | | | | |
| | | | | | SCALE: _____ | | STA. _____ TO STA. _____ | | | | |

| SUMMARY OF QUANTITIES | | | | PEORIA COUNTY | PEORIA COUNTY | TAZEWELL COUNTY |
|-----------------------|---|-------|------------|---|--|--|
| CODE NUMBER | ITEM DESCRIPTION | UNIT | TOTAL QTY. | CONST. TYPE CODE 0021 90% STATE 10% CITY TRAFFIC SIGNALS URBAN | CONST. TYPE CODE 0021 100% STATE OVERHEAD LIGHTING URBAN | CONST. TYPE CODE 0021 100% STATE OVERHEAD LIGHTING URBAN |
| 42400100 | PORTLAND CEMENT CONCRETE SIDEWALK 4 INCH | SQ FT | 70.0 | 70.0 | | |
| 44000600 | SIDEWALK REMOVAL | SQ FT | 65.0 | 65.0 | | |
| 67100100 | MOBILIZATION | L SUM | 1.0 | 0.8 | 0.15 | 0.05 |
| 70102630 | TRAFFIC CONTROL AND PROTECTION, STANDARD 701601 | L SUM | 1.0 | 1.0 | | |
| 70102635 | TRAFFIC CONTROL AND PROTECTION, STANDARD 701701 | L SUM | 1.0 | 1.0 | | |
| 72000100 | SIGN PANEL - TYPE 1 | SQ FT | 10.0 | 10.0 | | |
| 81028320 | UNDERGROUND CONDUIT, PVC, 1" DIA. | FOOT | 30.0 | 30.0 | | |
| 81028350 | UNDERGROUND CONDUIT, PVC, 2" DIA. | FOOT | 30.0 | 30.0 | | |
| 81028370 | UNDERGROUND CONDUIT, PVC, 3" DIA. | FOOT | 118.0 | 118.0 | | |
| 81028380 | UNDERGROUND CONDUIT, PVC, 3 1/2" DIA. | FOOT | 467.0 | 467.0 | | |
| 81400700 | HANDHOLE, PORTLAND CEMENT CONCRETE | EACH | 3.0 | 3.0 | | |
| 81400720 | DOUBLE HANDHOLE, PORTLAND CEMENT CONCRETE | EACH | 1.0 | 1.0 | | |
| 81702130 | ELECTRIC CABLE IN CONDUIT, 600V, (XLP-TYPE USE) 1/C NO. 6 | FOOT | 182.5 | 182.5 | | |
| 87301225 | ELECTRIC CABLE IN CONDUIT, SIGNAL, NO. 14 3C | FOOT | 626.5 | 626.5 | | |
| 87301245 | ELECTRIC CABLE IN CONDUIT, SIGNAL, NO. 14 5C | FOOT | 1837.5 | 1837.5 | | |
| 87301255 | ELECTRIC CABLE IN CONDUIT, SIGNAL, NO. 14 7C | FOOT | 1994.0 | 1994.0 | | |
| 87502500 | TRAFFIC SIGNAL POST, GALVANIZED STEEL 16 FT. | EACH | 1.0 | 1.0 | | |
| 87502510 | TRAFFIC SIGNAL POST, GALVANIZED STEEL 17 FT. | EACH | 1.0 | 1.0 | | |
| 87601200 | PEDESTRIAN PUSH-BUTTON POST, GALVANIZED STEEL, TYPE II | EACH | 2.0 | 2.0 | | |

SUMMARY OF QUANTITIES

| CODE NUMBER | ITEM DESCRIPTION | UNIT | TOTAL QTY. | PEORIA COUNTY | PEORIA COUNTY | TAZEWELL COUNTY |
|-------------|--|------|------------|--|---|---|
| | | | | CONST. TYPE CODE 0021 90% STATE 10% CITY TRAFFIC SIGNALS URBAN | CONST. TYPE CODE 0021 100% STATE OVERHEAD LIGHTING URBAN | CONST. TYPE CODE 0021 100% STATE OVERHEAD LIGHTING URBAN |
| 87700320 | STEEL MAST ARM ASSEMBLY AND POLE, 55 FT. | EACH | 3.0 | 3.0 | | |
| 87700420 | STEEL MAST ARM ASSEMBLY AND POLE, 70 FT. | EACH | 1.0 | 1.0 | | |
| 87800415 | CONCRETE FOUNDATION, TYPE E, 36-INCH DIAMETER | FOOT | 45.0 | 45.0 | | |
| 87800420 | CONCRETE FOUNDATION, TYPE E, 42-INCH DIAMETER | FOOT | 21.0 | 21.0 | | |
| 87900100 | DRILL EXISTING FOUNDATION | EACH | 3.0 | 3.0 | | |
| 87900200 | DRILL EXISTING HANDHOLE | EACH | 3.0 | 3.0 | | |
| 88030020 | SIGNAL HEAD, LED, 1-FACE, 3-SECTION, MAST ARM MOUNTED | EACH | 5.0 | 5.0 | | |
| 88030050 | SIGNAL HEAD, LED, 1-FACE, 3-SECTION, BRACKET MOUNTED | EACH | 2.0 | 2.0 | | |
| 88030070 | SIGNAL HEAD, LED, 1-FACE, 4-SECTION, BRACKET MOUNTED | EACH | 3.0 | 3.0 | | |
| 88030080 | SIGNAL HEAD, LED, 1-FACE, 4-SECTION, MAST ARM MOUNTED | EACH | 5.0 | 5.0 | | |
| 88030100 | SIGNAL HEAD, LED, 1-FACE, 5-SECTION, BRACKET MOUNTED | EACH | 1.0 | 1.0 | | |
| 88200310 | TRAFFIC SIGNAL BACKPLATE, LOUVERED, FORMED PLASTIC | EACH | 10.0 | 10.0 | | |
| 89500200 | RELOCATE EXISTING PEDESTRIAN SIGNAL HEAD | EACH | 7.0 | 7.0 | | |
| 89500400 | RELOCATE EXISTING PEDESTRIAN PUSH-BUTTON | EACH | 7.0 | 7.0 | | |
| 89502210 | MODIFY EXISTING CONTROLLER CABINET | EACH | 1.0 | 1.0 | | |
| 89502375 | REMOVE EXISTING TRAFFIC SIGNAL EQUIPMENT | EACH | 1.0 | 1.0 | | |
| 89502385 | REMOVE EXISTING CONCRETE FOUNDATION | EACH | 4.0 | 4.0 | | |
| X0325924 | CLEAN, RELAMP AND MAINTENANCE OF EXISTING LUMINAIRE | EACH | 110.0 | | 102.0 | 8.0 |
| X0326812 | CAT 5 ETHERNET CABLE | FOOT | 261.5 | 261.5 | | |
| X0327905 | CLOSED CIRCUIT TELEVISION DOME CAMERA, IP BASED (INSTALL ONLY) | EACH | 1.0 | 1.0 | | |

| | |
|---|------------------------|
| REMOVE EXISTING CONCRETE FOUNDATIONS - QTY. 4.0 EA. | |
| QTY. | LOCATIONS |
| 1.0 EA. | MA-1, MA-2, TS-1, TS-3 |

| SCHEDULE OF QUANTITIES | | |
|--|------|----------|
| ITEM DESCRIPTION | UNIT | QUANTITY |
| REMOVE EXISTING TRAFFIC SIGNAL EQUIPMENT | EACH | 1.0 |
| REMOVE EXISTING CONCRETE FOUNDATIONS | EACH | 4.0 |

REMOVE EXISTING TRAFFIC SIGNAL EQUIPMENT - QTY. 1 EACH (INCLUDES ALL ITEMS LISTED BELOW)
 THE FOLLOWING TRAFFIC SIGNAL EQUIPMENT SHALL BE REMOVED AND DELIVERED BY THE CONTRACTOR TO THE IDOT DISTRICT 4 WAREHOUSE, 6515 W. US ROUTE 150, EDWARDS. THE CONTRACTOR SHALL CONTACT PAUL GRANT AT (309) 671-4474 FORTY-EIGHT HOURS IN ADVANCE OF DELIVERY.

| QTY. | ITEM |
|------|---|
| 2.0 | STEEL MAST ARM ASSEMBLY |
| 2.0 | TRAFFIC SIGNAL POST AND BASE, ALUMINUM, 16 FT. |
| 1.0 | SIGNAL HEAD, 1-FACE, 3-SECTION, BRACKET MOUNTED |
| 3.0 | SIGNAL HEAD, 1-FACE, 4-SECTION, BRACKET MOUNTED |
| 4.0 | SIGNAL HEAD, 1-FACE, 5-SECTION, BRACKET MOUNTED |

THE FOLLOWING ITEMS SHALL BE REMOVED AND DISPOSED OF BY THE CONTRACTOR OFF OF THE RIGHT-OF-WAY. THE SALVAGE VALUE OF THIS EQUIPMENT SHALL BE REFLECTED IN THE UNIT BID PRICE FOR REMOVE EXISTING TRAFFIC SIGNAL EQUIPMENT.

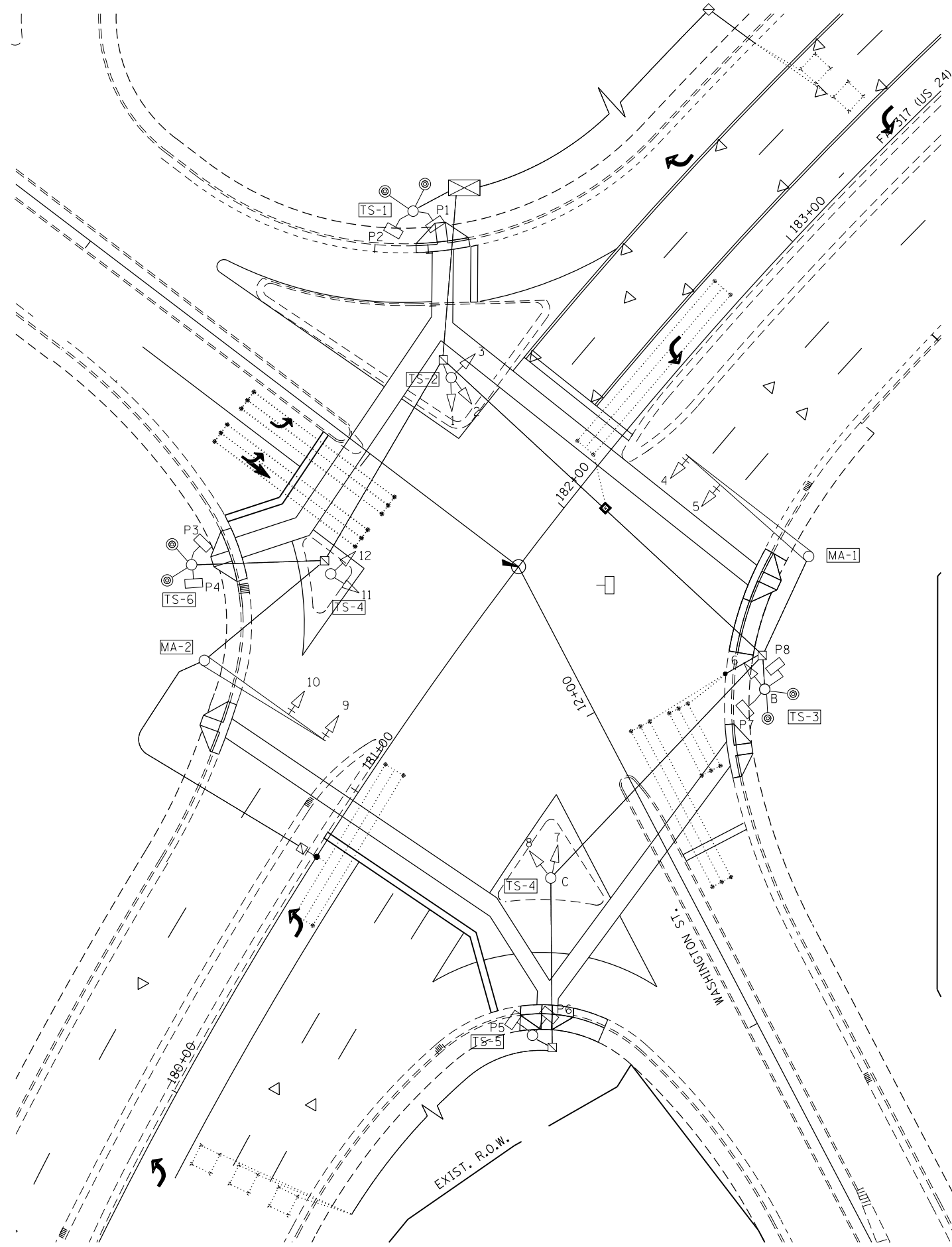
| QTY. | ITEM |
|------|---|
| 2.0 | TRAFFIC SIGNAL POST AND BASE, ALUMINUM, 10 FT. |
| 2.0 | TRAFFIC SIGNAL POST AND BASE, ALUMINUM, 16 FT. |
| 2.0 | SIGNAL HEAD, 1-FACE, 3-SECTION WITH BACKPLATE, MAST ARM MOUNTED |
| 2.0 | SIGNAL HEAD, 1-FACE, 4-SECTION WITH BACKPLATE MAST ARM MOUNTED |

EXISTING TRAFFIC SIGNAL AND REMOVAL NOTES

1. THE REMOVAL ITEMS ARE AS INDICATED ON THE PLANS. THE CONTRACTOR SHALL VERIFY ALL REMOVAL ITEMS PRIOR TO BIDDING.
2. THE EXISTING TRAFFIC SIGNALS SHALL REMAIN IN OPERATION DURING THE CONSTRUCTION OF THE PROPOSED TRAFFIC SIGNALS.
3. ANY MAINTENANCE OF THE EXISTING SIGNALS SHALL BE CONSIDERED EXTRA WORK IN ACCORDANCE WITH ARTICLE 109.04 OF THE STANDARD SPECIFICATIONS.
4. FULL DEPTH SAW CUTS SHALL BE REQUIRED AT ALL REMOVAL LIMITS. IF THE CONTRACTOR REMOVES OR DAMAGES THE EXISTING SIDEWALK OR BITUMINOUS SURFACE OUTSIDE THE REMOVAL LIMITS DESIGNATED BY THE ENGINEER, THE CONTRACTOR SHALL REMOVE AND/OR REPLACE THAT PORTION AT THE CONTRACTOR'S EXPENSE.

EXISTING TRAFFIC SIGNAL LEGEND

- ☒ EX. HANDHOLE
- EX. CONDUIT
- ▭ EX. DETECTOR LOOP (6' X 50' QUAD)
- EX. DETECTOR LOOP (6' X 6')
- ⊠ EX. CONTROLLER CABINET
- ⊞ EX. ELECTRICAL SERVICE
- ⊕ EX. TRAFFIC SIGNAL HEAD
- ⊖ EX. TRAFFIC SIGNAL HEAD W/ BACKPLATE
- ⊗ EX. STL COMB MAST ARM ASSEMBLY AND POLE
- ⊘ EX. LUMINAIRE



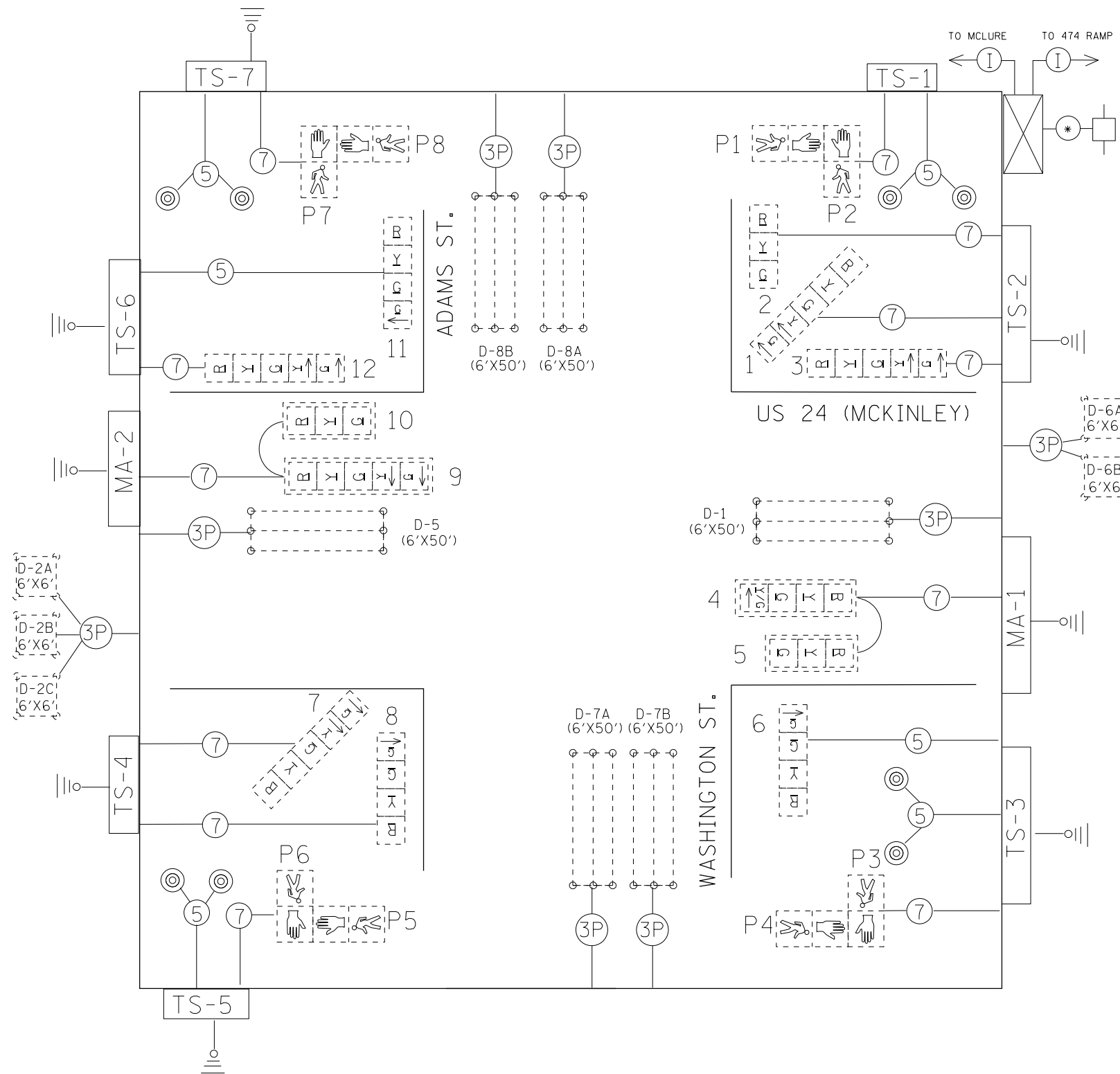
| | | | |
|---------------------------------------|---------------------------------|------------|-----------|
| FILE NAME = | USER NAME = keathbr | DESIGNED - | REVISED - |
| C:\temp\68B53 - US 24 & Adams Traffic | Signal Plans (Final 9-2-13).dgn | DRAWN - | REVISED - |
| | PLOT SCALE = 40.0000' / in. | CHECKED - | REVISED - |
| | PLOT DATE = 9/4/2013 | DATE - | REVISED - |

**STATE OF ILLINOIS
DEPARTMENT OF TRANSPORTATION**

**EXISTING TRAFFIC SIGNALS AND REMOVAL PLAN
US 24 (MCKINLEY) & ADAMS/WASHINGTON - BARTONVILLE**

SCALE: _____ STA. _____ TO STA. _____

| | | | | |
|---------------------------|------------|-----------------|--------------|-----------|
| F.A.P. RTE. | SECTION | COUNTY | TOTAL SHEETS | SHEET NO. |
| 317 | 46-1(TS-3) | PEORIA-TAZEWELL | 10 | 5 |
| CONTRACT NO. 68B53 | | | | |
| ILLINOIS FED. AID PROJECT | | | | |

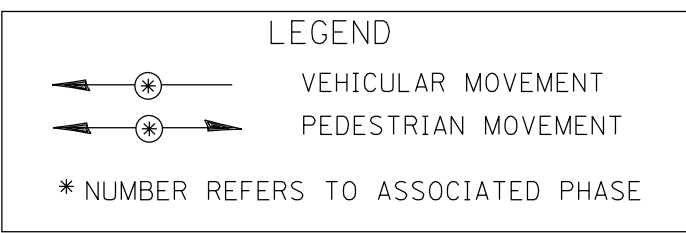
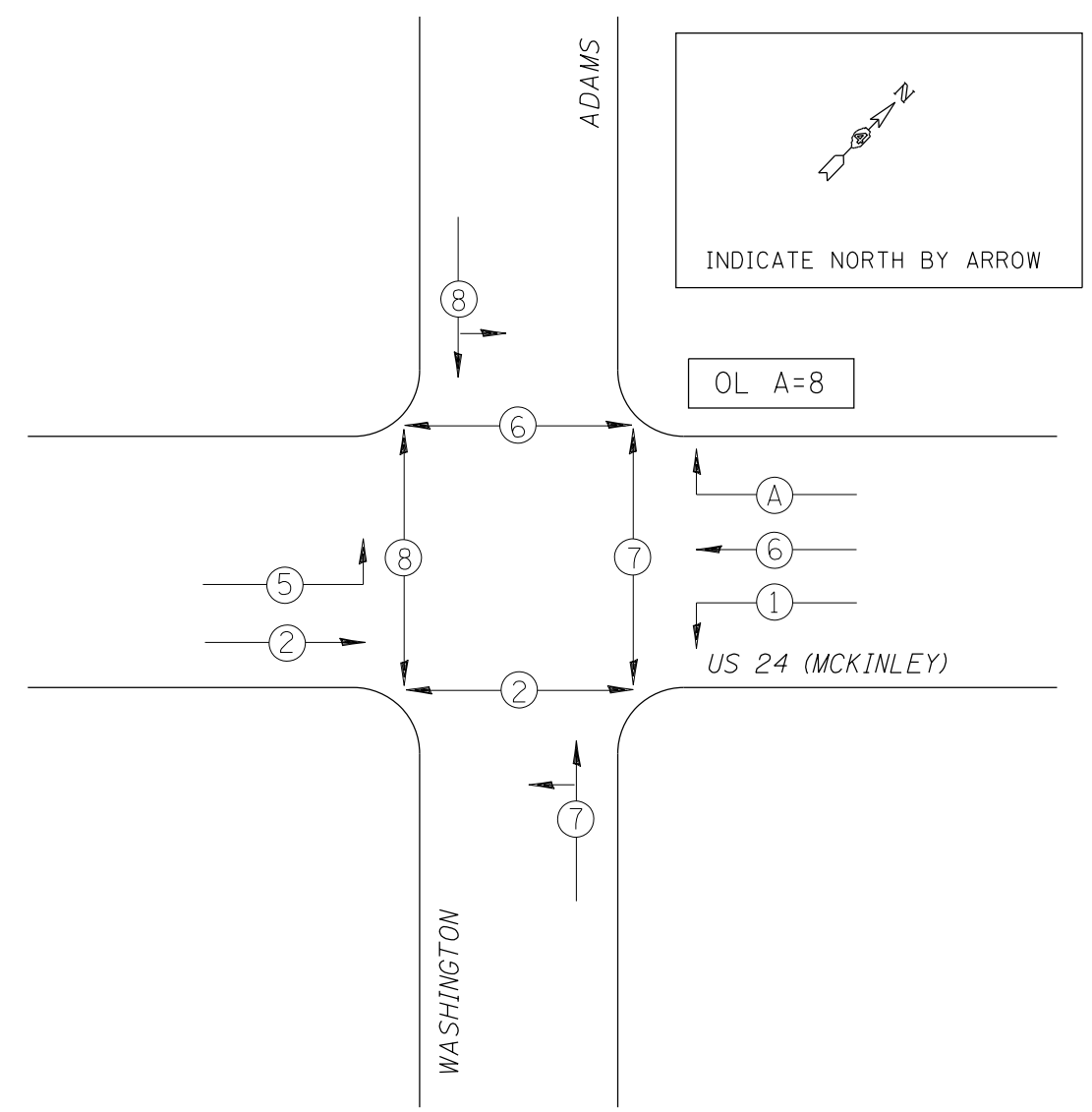


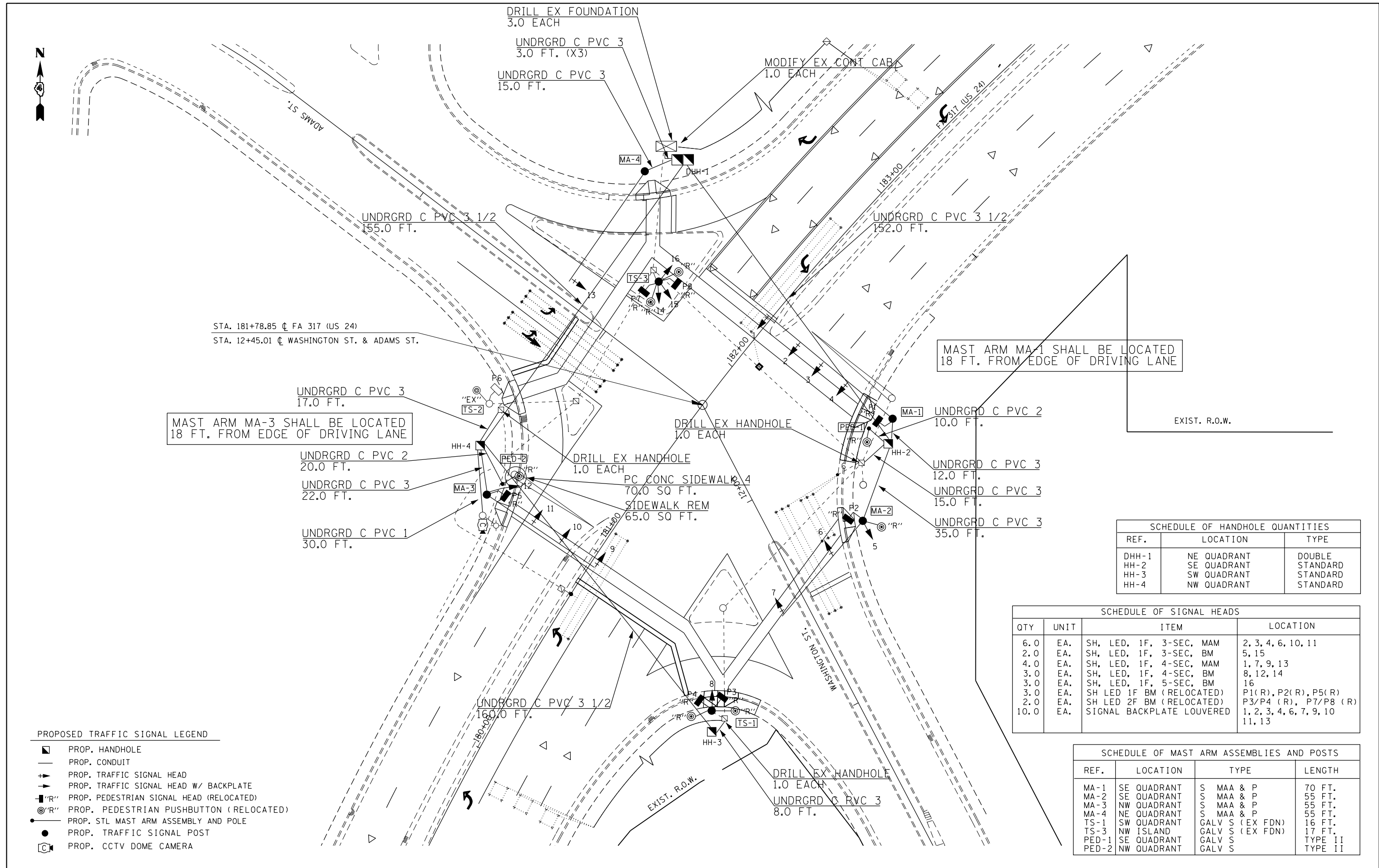
TRAFFIC SIGNALS LEGEND

- EX. CONTROLLER (SIGNAL)
- #18 3-PR DETECTOR LOOP CABLE
- EX. DETECTOR LOOP (6'X6')
- EX. DETECTOR LOOP (QUADRAPOLE)
- EX. 3 SEC. SIGNAL HEAD W/BACKPLATE
- 5/C NO. 14 SIGNAL CABLE
- EX. SERVICE INSTALLATION
- EX. 3 SEC. SIGNAL HEAD
- 7/C NO. 14 SIGNAL CABLE
- EX. GROUND/SAFETY BOND

EXISTING PHASE DIAGRAM

NAME OF INTERSECTION US 24 (MCKINLEY) & ADAMS/WASHINGTON
 EXISTING CONTROLLER: FAC (TS-2 TYPE 2) IN TYPE V
 CABINET, TS-1 BACKPANEL





MAST ARM MA-3 SHALL BE LOCATED 18 FT. FROM EDGE OF DRIVING LANE

MAST ARM MA-1 SHALL BE LOCATED 18 FT. FROM EDGE OF DRIVING LANE

| SCHEDULE OF HANDHOLE QUANTITIES | | |
|---------------------------------|-------------|----------|
| REF. | LOCATION | TYPE |
| DHH-1 | NE QUADRANT | DOUBLE |
| HH-2 | SE QUADRANT | STANDARD |
| HH-3 | SW QUADRANT | STANDARD |
| HH-4 | NW QUADRANT | STANDARD |

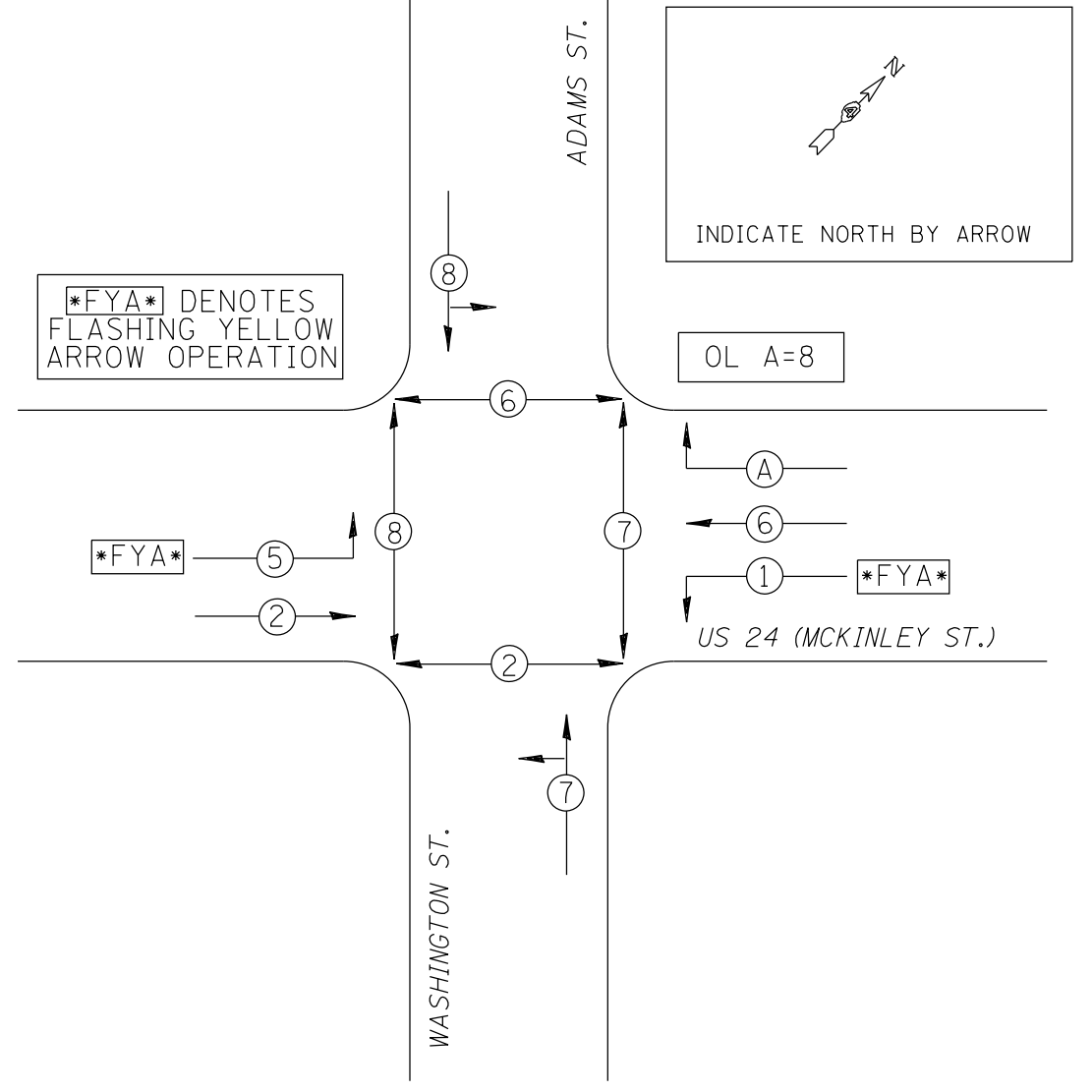
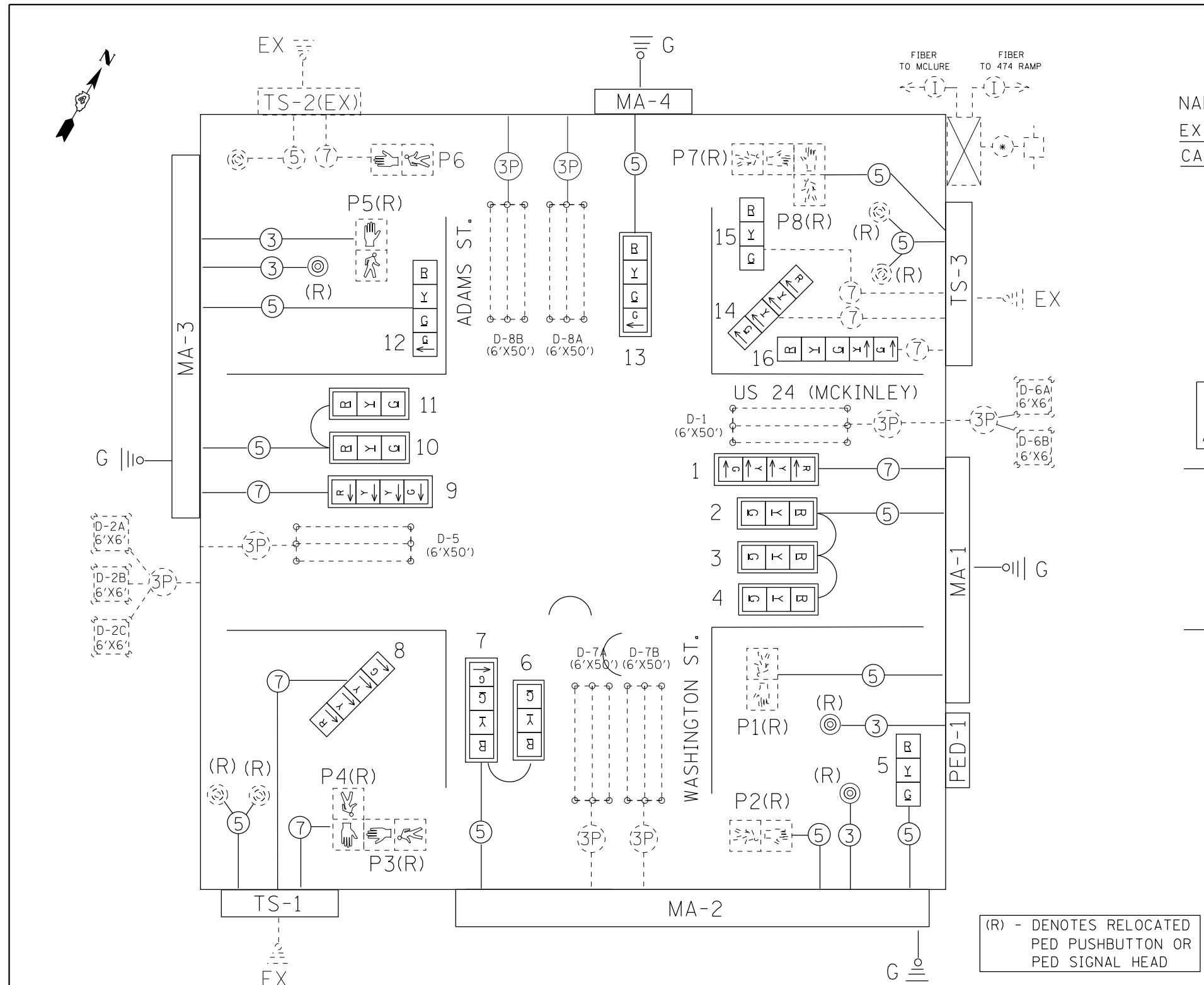
| SCHEDULE OF SIGNAL HEADS | | | |
|--------------------------|------|---------------------------|---------------------------------|
| QTY | UNIT | ITEM | LOCATION |
| 6.0 | EA. | SH, LED, 1F, 3-SEC, MAM | 2, 3, 4, 6, 10, 11 |
| 2.0 | EA. | SH, LED, 1F, 3-SEC, BM | 5, 15 |
| 4.0 | EA. | SH, LED, 1F, 4-SEC, MAM | 1, 7, 9, 13 |
| 3.0 | EA. | SH, LED, 1F, 4-SEC, BM | 8, 12, 14 |
| 3.0 | EA. | SH, LED, 1F, 5-SEC, BM | 16 |
| 3.0 | EA. | SH LED 1F BM (RELOCATED) | P1(R), P2(R), P5(R) |
| 2.0 | EA. | SH LED 2F BM (RELOCATED) | P3/P4 (R), P7/P8 (R) |
| 10.0 | EA. | SIGNAL BACKPLATE LOUVERED | 1, 2, 3, 4, 6, 7, 9, 10, 11, 13 |

| SCHEDULE OF MAST ARM ASSEMBLIES AND POSTS | | | |
|---|-------------|-----------------|---------|
| REF. | LOCATION | TYPE | LENGTH |
| MA-1 | SE QUADRANT | S MAA & P | 70 FT. |
| MA-2 | SE QUADRANT | S MAA & P | 55 FT. |
| MA-3 | NW QUADRANT | S MAA & P | 55 FT. |
| MA-4 | NE QUADRANT | S MAA & P | 55 FT. |
| TS-1 | SW QUADRANT | GALV S (EX FDN) | 16 FT. |
| TS-3 | NW ISLAND | GALV S (EX FDN) | 17 FT. |
| PED-1 | SE QUADRANT | GALV S | TYPE II |
| PED-2 | NW QUADRANT | GALV S | TYPE II |

- PROPOSED TRAFFIC SIGNAL LEGEND**
- PROP. HANDHOLE
 - PROP. CONDUIT
 - + PROP. TRAFFIC SIGNAL HEAD
 - ▶ PROP. TRAFFIC SIGNAL HEAD W/ BACKPLATE
 - ⊖ "R" PROP. PEDESTRIAN SIGNAL HEAD (RELOCATED)
 - ⊙ "R" PROP. PEDESTRIAN PUSHBUTTON (RELOCATED)
 - PROP. STL MAST ARM ASSEMBLY AND POLE
 - PROP. TRAFFIC SIGNAL POST
 - 📹 PROP. CCTV DOME CAMERA

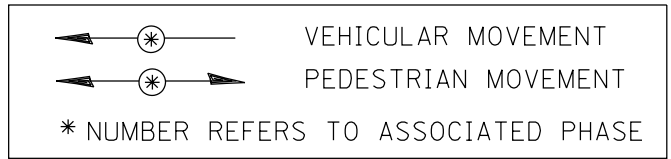
PROPOSED PHASE DIAGRAM

NAME OF INTERSECTION US 24 (MCKINLEY) & ADAMS/WASHINGTON
 EXISTING CONTROLLER: FAC (TS-2 TYPE 2) IN TYPE V
 CABINET, TS-1 BACKPANEL



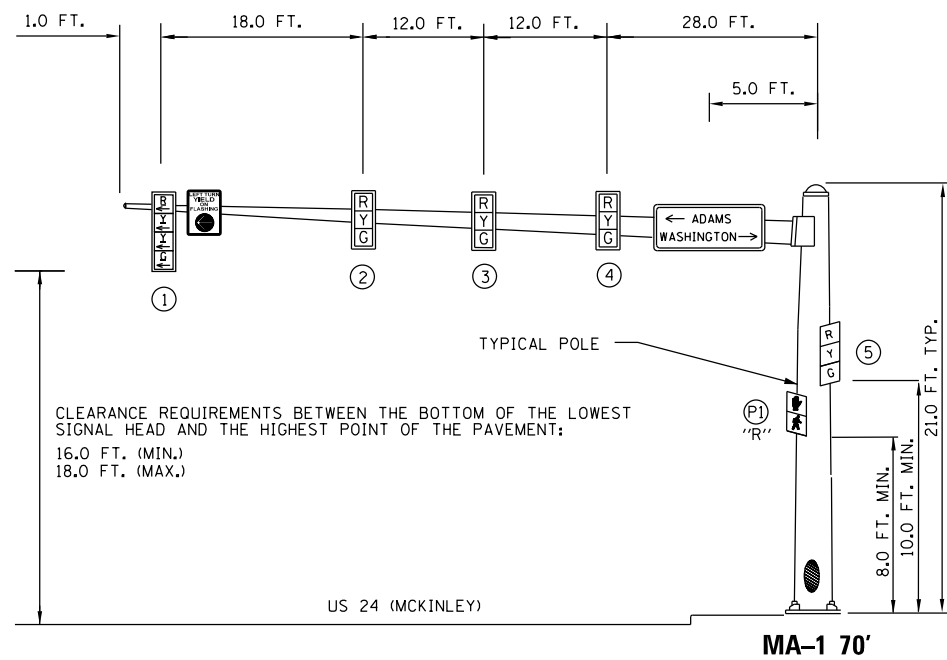
FYA DENOTES FLASHING YELLOW ARROW OPERATION

(R) - DENOTES RELOCATED PED PUSHBUTTON OR PED SIGNAL HEAD

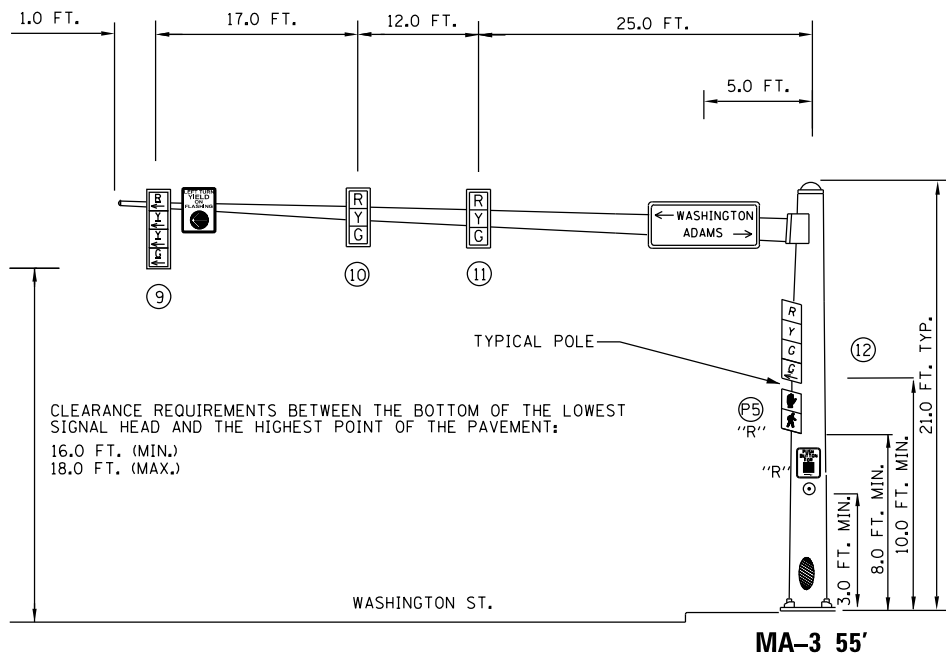


ALL PROPOSED TRAFFIC SIGNAL MAST ARMS, CABINETS, HANDHOLES (LIDS AND FRAMES), AND EXPOSED METALLIC CONDUITS SHALL BE GROUNDED AND SAFETY BONDED IN ACCORDANCE WITH NEC REQUIREMENTS. EXISTING GROUND SAFETY BONDS SHALL BE REUSED WHENEVER POSSIBLE.

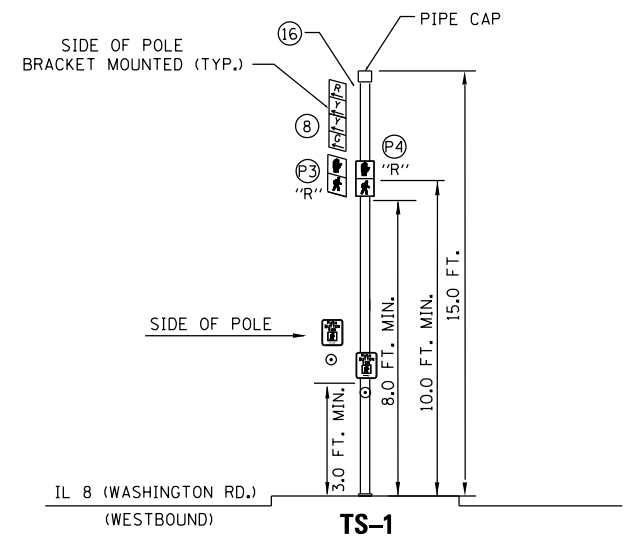
| | | | | | |
|--|-----------------------------------|--|-------------------------------|--|--------------------------------|
| | EX. CONTROLLER (SIGNAL) | | EX. #18 3-PR DETECTOR CABLE | | EX. DETECTOR LOOP (6'X6') |
| | PROP. 3 SEC. SIG HEAD W/BACKPLATE | | EX. 5/C NO. 14 SIGNAL CABLE | | EX. DETECTOR LOOP (QUADRAPOLE) |
| | PROP. 3 SEC. SIGNAL HEAD | | EX. 7/C NO. 14 SIGNAL CABLE | | EX. SERVICE INSTALLATION |
| | EX. PEDESTRIAN SIGNAL HEAD | | PROP. 5/C NO. 14 SIGNAL CABLE | | EX. GROUND/SAFETY BOND |
| | EX. PEDESTRIAN PUSHBUTTON | | PROP. 7/C NO. 14 SIGNAL CABLE | | PROP. GROUND/SAFETY BOND |



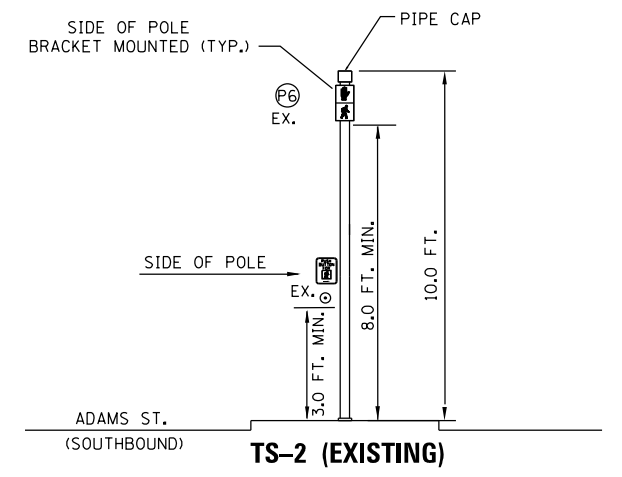
EASTBOUND TRAFFIC SIGNAL
SOUTHEAST CORNER OF US 24 (MCKINLEY) & ADAMS/WASHINGTON



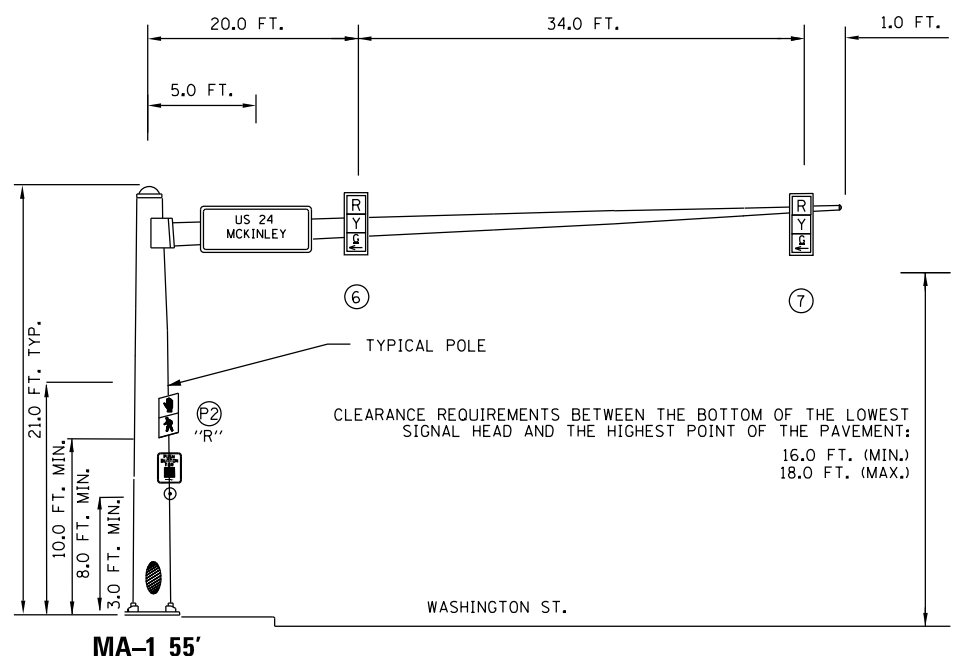
WESTBOUND TRAFFIC SIGNAL
NORTHWEST CORNER OF US 24 (MCKINLEY) & ADAMS/WASHINGTON



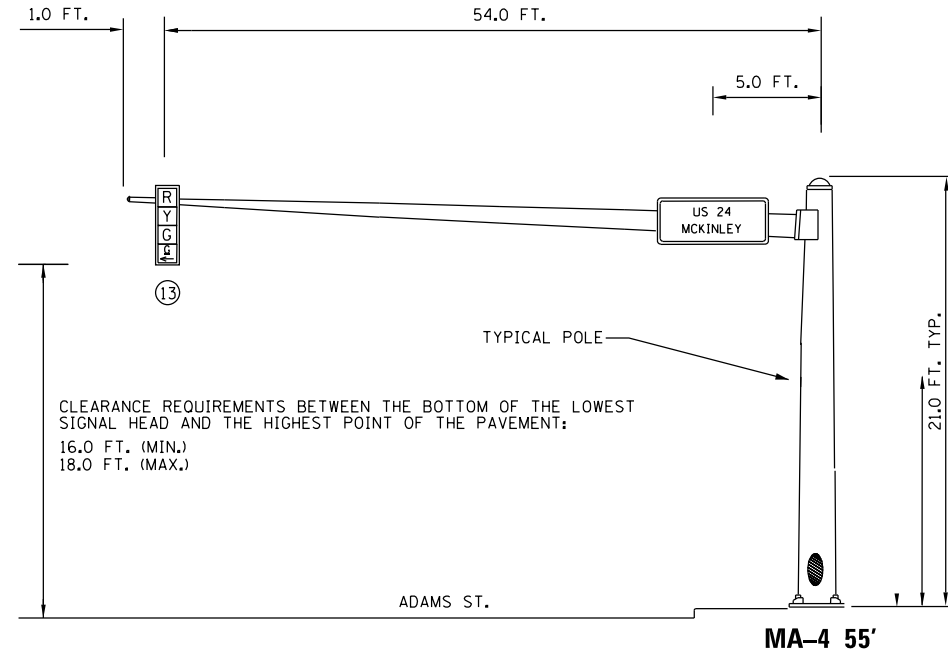
WESTBOUND TRAFFIC SIGNAL
SOUTHWEST CORNER OF US 24 (MCKINLEY) & ADAMS/WASHINGTON



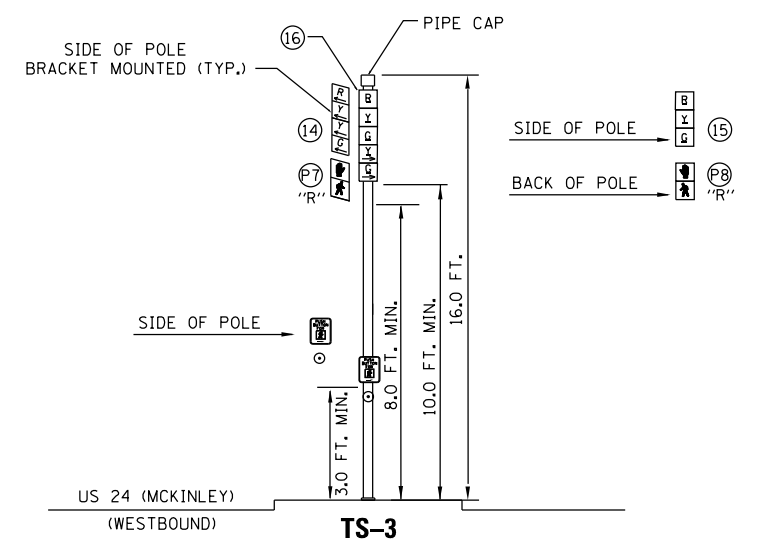
NORTHBOUND PEDESTRIAN SIGNAL
NORTHWEST CORNER OF US 24 (MCKINLEY) & ADAMS/WASHINGTON



SOUTHBOUND TRAFFIC SIGNAL
SOUTHEAST CORNER OF US 24 (MCKINLEY) & ADAMS/WASHINGTON



NORTHBOUND TRAFFIC SIGNAL
NORTHEAST CORNER OF US 24 (MCKINLEY) & ADAMS/WASHINGTON



EAST/WESTBOUND TRAFFIC SIGNAL
NORTHEAST ISLAND OF US 24 (MCKINLEY) & ADAMS/WASHINGTON

| | | | |
|---------------------------------------|---------------------------------|------------|-----------|
| FILE NAME = | USER NAME = keathbr | DESIGNED - | REVISED - |
| C:\temp\68B53 - US 24 & Adams Traffic | Signal Plans (Final 9-2-13).dgn | DRAWN - | REVISED - |
| | PLOT SCALE = 40.0000' / in. | CHECKED - | REVISED - |
| | PLOT DATE = 9/4/2013 | DATE - | REVISED - |

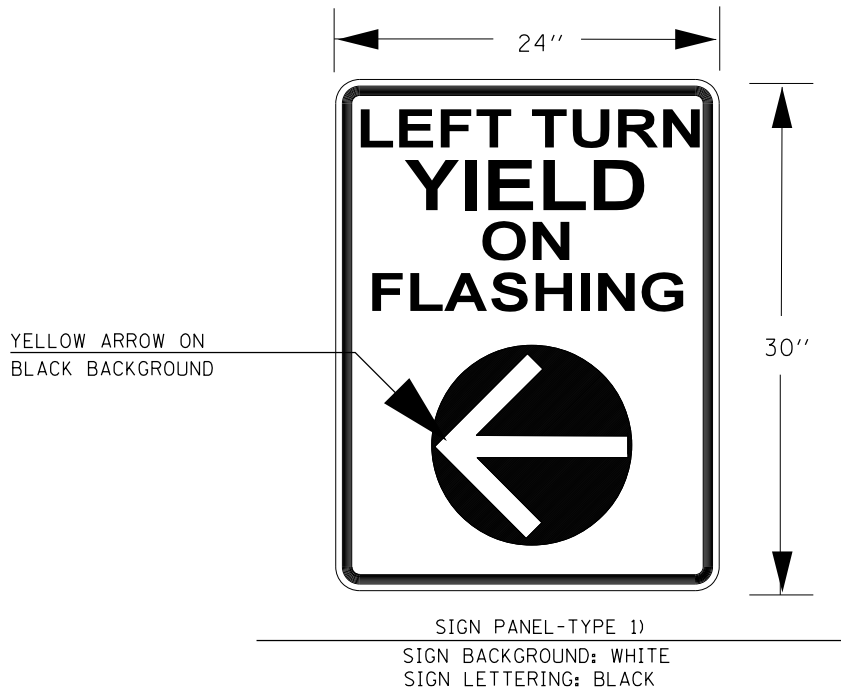
STATE OF ILLINOIS
DEPARTMENT OF TRANSPORTATION

TRAFFIC SIGNAL MAST ARM DETAILS
US 24 (MCKINLEY) & ADAMS/WASHINGTON - BARTONVILLE

| | | | | |
|---------------------------|------------|-----------------|--------------|-----------|
| F.A.P. RTE. | SECTION | COUNTY | TOTAL SHEETS | SHEET NO. |
| 317 | 46-1(TS-3) | PEORIA-TAZEWELL | 10 | 9 |
| CONTRACT NO. 68B53 | | | | |
| ILLINOIS FED. AID PROJECT | | | | |

SCALE: _____ SHEET NO. 16 OF 62 SHEETS STA. _____ TO STA. _____

| LIGHT BOLLARD LED LAMP REPLACEMENT LOCATIONS | | |
|--|-------------|------------|
| LOCATION | CITY | QUANTITY |
| STERLING AVE. | PEORIA | 6 |
| US 150 (WAR MEMORIAL DR.) | PEORIA | 8 |
| FORREST HILL | PEORIA | 6 |
| GALE | PEORIA | 6 |
| NEBRASKA | PEORIA | 6 |
| UNIVERSITY | PEORIA | 4 |
| BROADWAY | PEORIA | 4 |
| ELLIS | PEORIA | 6 |
| SHERIDAN | PEORIA | 6 |
| NORTH | PEORIA | 6 |
| IL 40 (KNOXVILLE) FLYOVER RAMP | PEORIA | 8 |
| IL 40 (KNOXVILLE) | PEORIA | 4 |
| PERRY | PEORIA | 6 |
| MONROE | PEORIA | 6 |
| MADISON | PEORIA | 6 |
| JEFFERSON | PEORIA | 6 |
| IL 29 (ADAMS) | PEORIA | 8 |
| IL 116 (MAIN STREET) | EAST PEORIA | 4 |
| IL 8 (WASHINGTON STREET) | EAST PEORIA | 4 |
| TOTAL | | 110 |



| BILL OF MATERIAL - SHEET 10 | | |
|---|------|-------|
| PAY ITEM | UNIT | QTY. |
| CLEAN, RELAMP AND MAINTENANCE OF EXISTING LUMINAIRE | EACH | 110.0 |