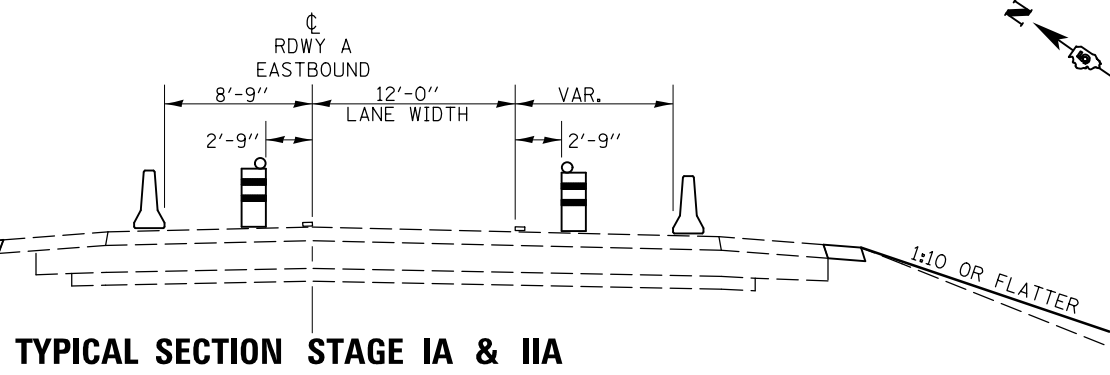
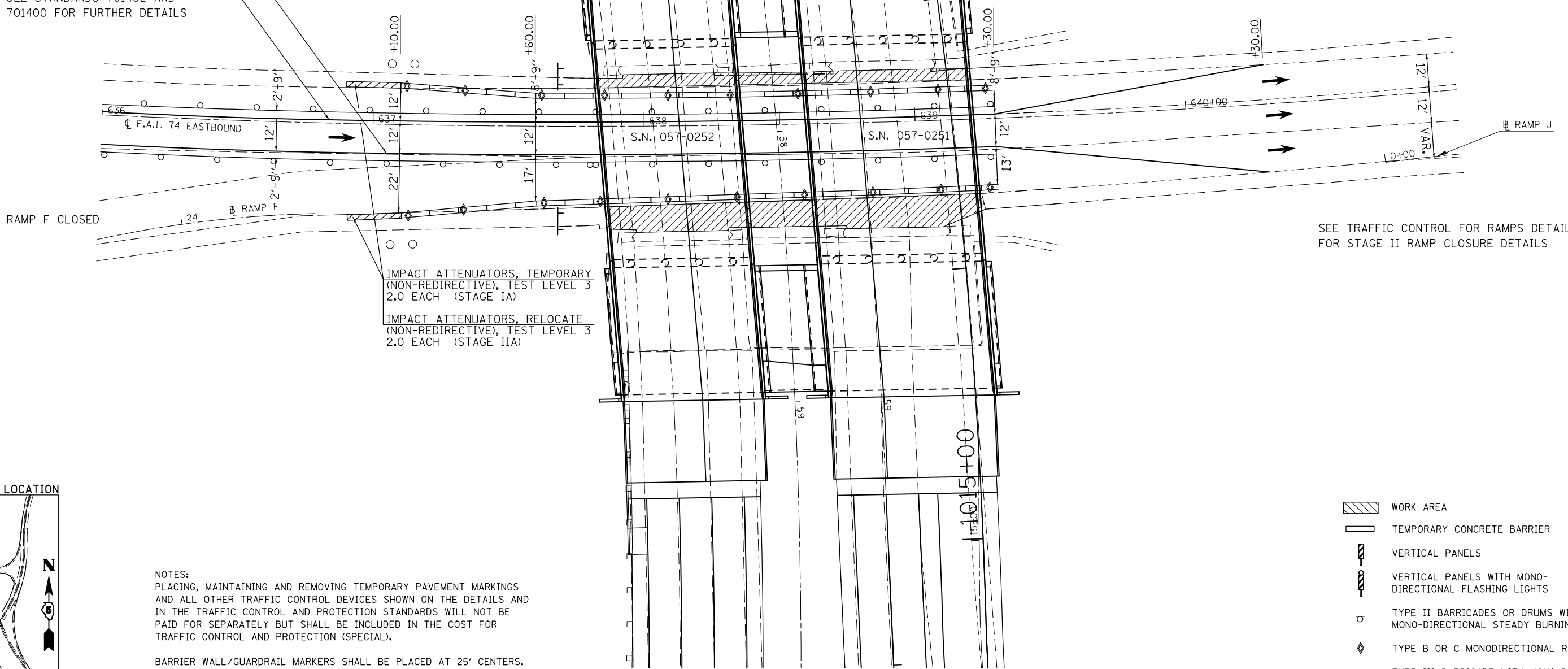


STAGES IA & IIA FAI-74 EASTBOUND

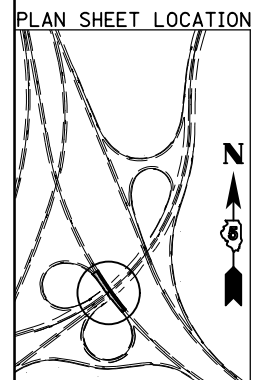


REFLECTORIZED TEMPORARY PAVEMENT MARKING WHITE
REFLECTORIZED TEMPORARY PAVEMENT MARKING YELLOW
SEE STANDARDS 701402 AND 701400 FOR FURTHER DETAILS



SEE TRAFFIC CONTROL FOR RAMP J
FOR STAGE II RAMP CLOSURE DETAILS

IMPACT ATTENUATORS, TEMPORARY (NON-REDIRECTIVE), TEST LEVEL 3 2.0 EACH (STAGE IA)
IMPACT ATTENUATORS, RELOCATE (NON-REDIRECTIVE), TEST LEVEL 3 2.0 EACH (STAGE IIA)



NOTES:
PLACING, MAINTAINING AND REMOVING TEMPORARY PAVEMENT MARKINGS AND ALL OTHER TRAFFIC CONTROL DEVICES SHOWN ON THE DETAILS AND IN THE TRAFFIC CONTROL AND PROTECTION STANDARDS WILL NOT BE PAID FOR SEPARATELY BUT SHALL BE INCLUDED IN THE COST FOR TRAFFIC CONTROL AND PROTECTION (SPECIAL).
BARRIER WALL/GUARDRAIL MARKERS SHALL BE PLACED AT 25' CENTERS. MARKERS ON RIGHT SHALL BE CRYSTAL AND MARKERS ON LEFT SHALL BE AMBER.

- WORK AREA
- TEMPORARY CONCRETE BARRIER
- VERTICAL PANELS
- VERTICAL PANELS WITH MONO-DIRECTIONAL FLASHING LIGHTS
- TYPE II BARRICADES OR DRUMS WITH MONO-DIRECTIONAL STEADY BURNING LIGHTS
- TYPE B OR C MONODIRECTIONAL REFLECTORS
- TYPE III BARRICADE WITH MONO-DIRECTIONAL FLASHING LIGHTS

FILE NAME =	USER NAME = detersbj	DESIGNED -	REVISED -
ei:\pw\work\p\id\detersbj\d0157116\0570570-sht-plan.dgn		DRAWN -	REVISED -
		CHECKED -	REVISED -
		DATE -	REVISED -

**STATE OF ILLINOIS
DEPARTMENT OF TRANSPORTATION**

**TRAFFIC CONTROL AND PROTECTION STAGES IA & IIA
FAI-74 EASTBOUND**
SCALE: SHEET 1 OF 1 SHEETS STA. 636+00.00 TO STA. 641+00.00

F.A.I. RTE.	SECTION	COUNTY	TOTAL SHEETS	SHEET NO.
74	57-20(HB,HB-1)BR-1	MCLEAN	440	115
CONTRACT NO. 70570				
ILLINOIS FED. AID PROJECT				