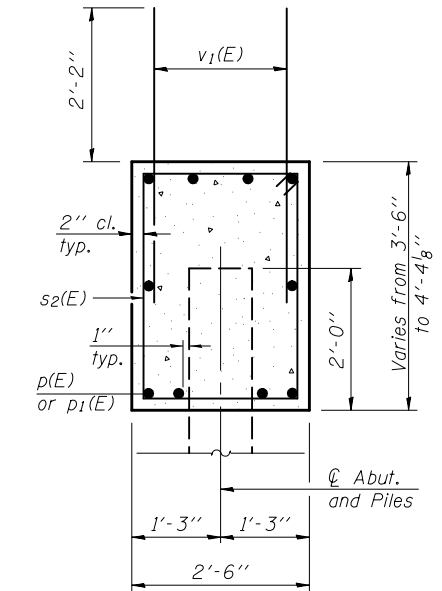
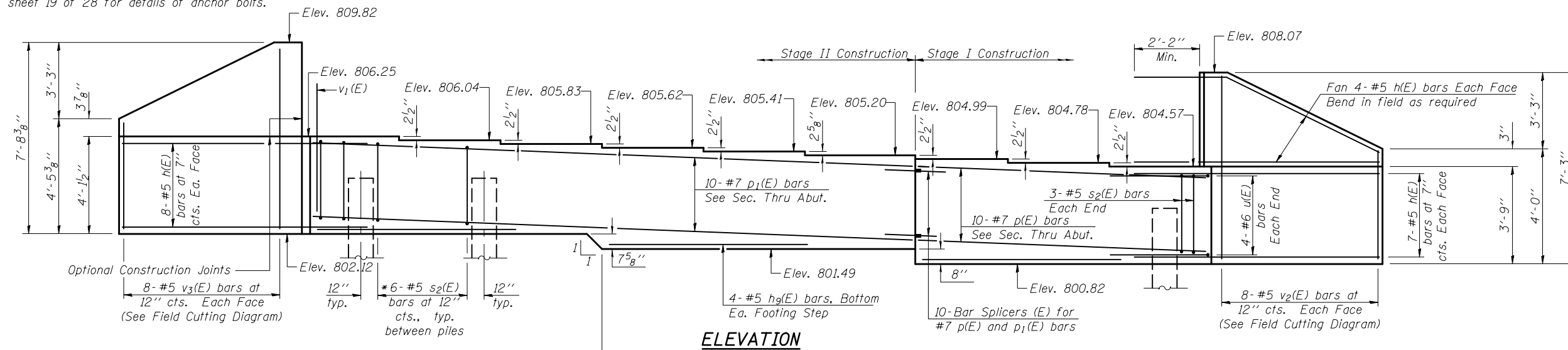
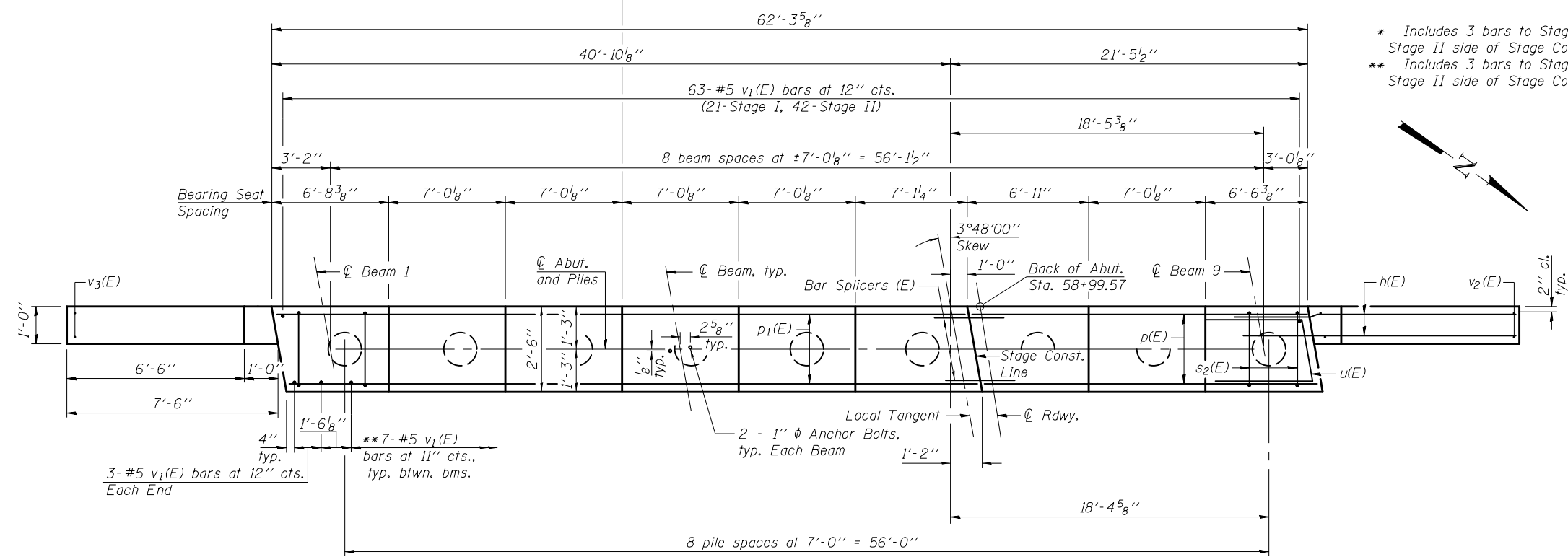


Notes:
 Pour steps monolithically with cap.
 Space reinforcement bars to miss anchor bolts. See sheet 19 of 28 for details of anchor bolts.



* Includes 3 bars to Stage I side and 3 bars to Stage II side of Stage Const. Jt. at same spacing.
 ** Includes 3 bars to Stage I side and 4 bars to Stage II side of Stage Const. Jt. at same spacing.

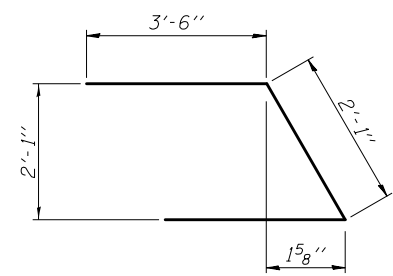
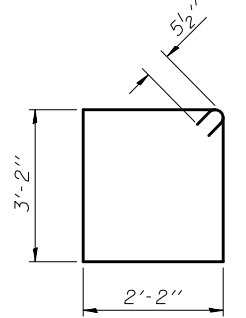
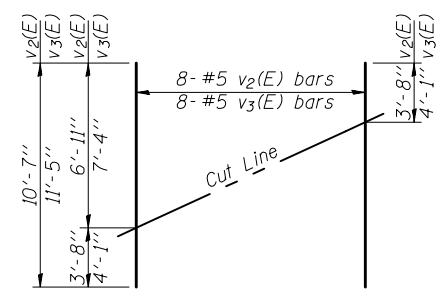


BILL OF MATERIAL

Bar	No.	Size	Length	Shape
h(E)	46	#5	10'-4"	—
h ₉ (E)	12	#5	14'-0"	—
p(E)	10	#7	20'-1"	—
p ₁ (E)	10	#7	41'-6"	—
s ₂ (E)	54	#5	11'-7"	□
u(E)	8	#6	9'-1"	┘
v ₁ (E)	125	#5	4'-4"	—
v ₂ (E)	8	#5	10'-7"	—
v ₃ (E)	8	#5	11'-5"	—
Structure Excavation			Cu. Yd.	128
Concrete Structures			Cu. Yd.	25.3
Reinforcement Bars, Epoxy Coated			Pound	3440
Furnishing Metal Shell Piles 14" x 0.250"			Foot	176
Driving Piles			Foot	176
Test Pile Metal Shells			Each	1
Pile Shoes			Each	9

PILE DATA

Type: Metal Shell - 14 in. dia. x 0.250 in. walls with pile shoes
 Nominal Required Bearing: 255 kips
 Factored Resistance Available: 140 kips
 Est. Length: 22 ft. (all piles)
 No. Production Piles: 8
 No. Test Piles: 1



Order v₂(E) full length. Cut as shown and use remainder of bars in opposite face.