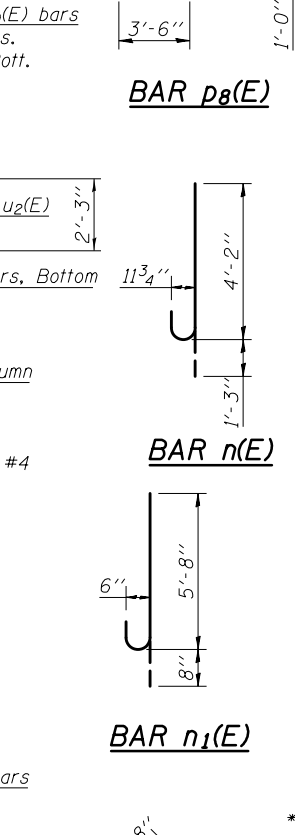
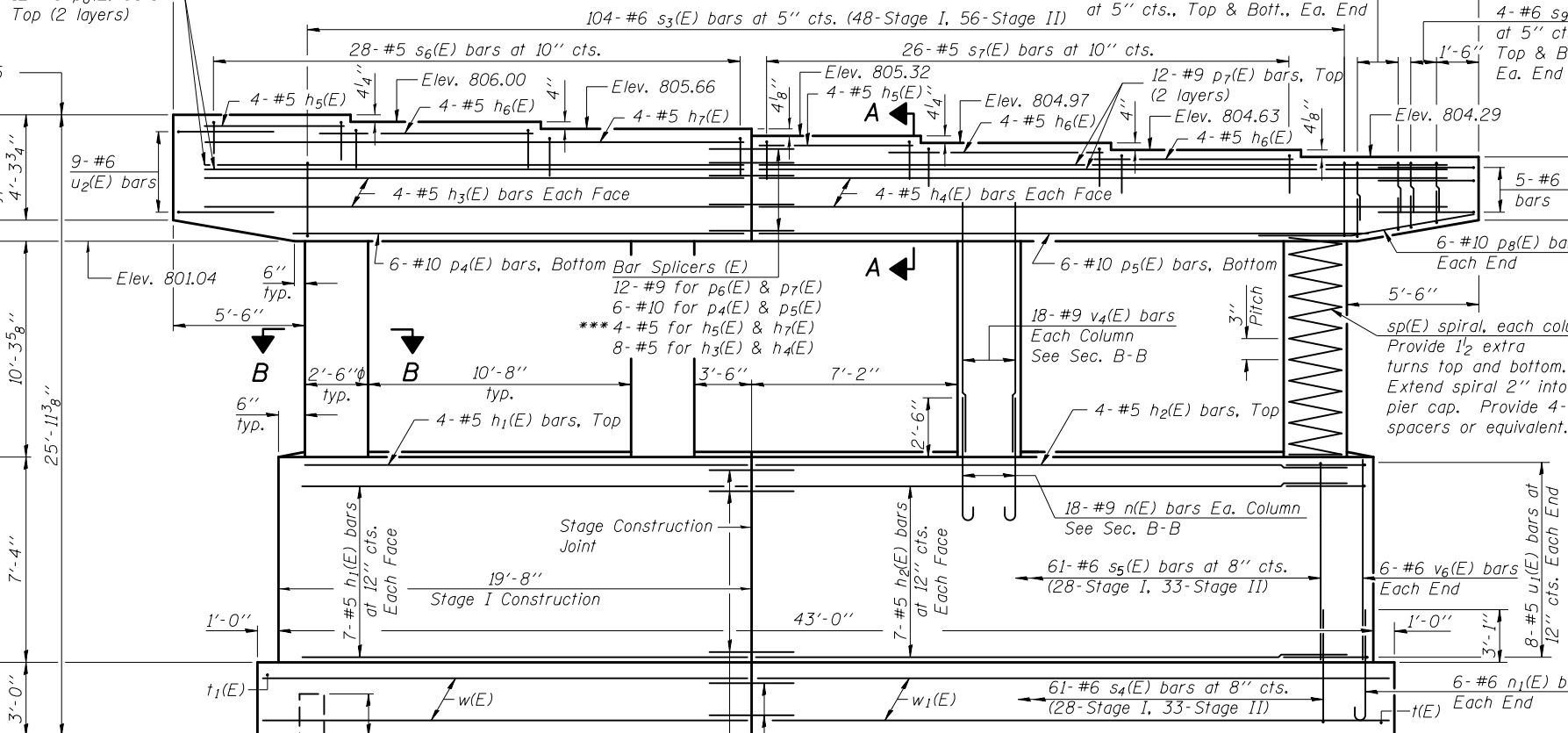
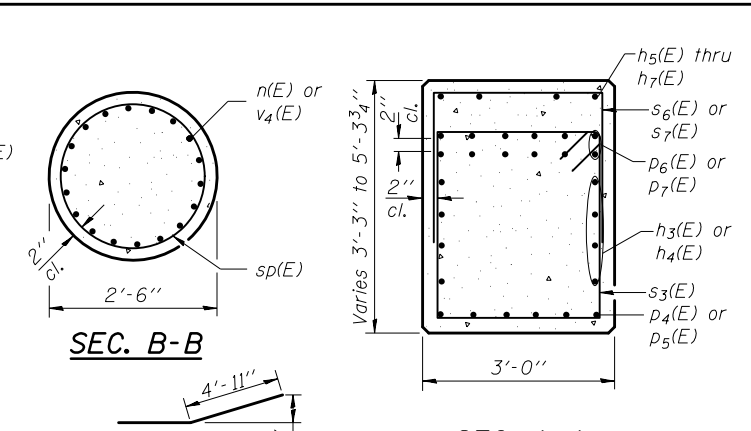
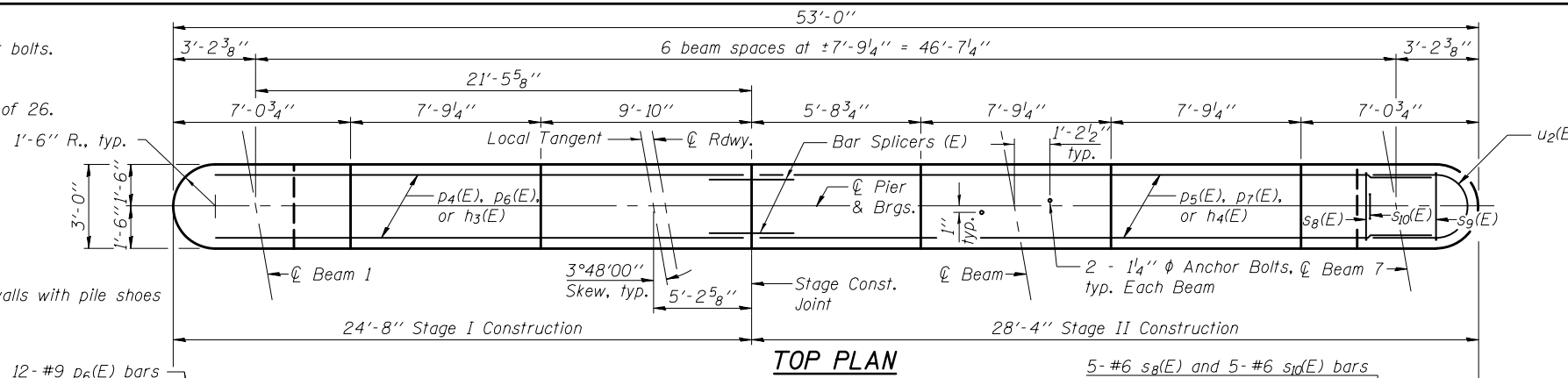


Notes:
 Space reinforcement in cap to miss anchor bolts.
 Pour steps monolithically with cap.
 For details of piles, see sheet 22 of 26.
 For details of Bar Splicers, see sheet 23 of 26.

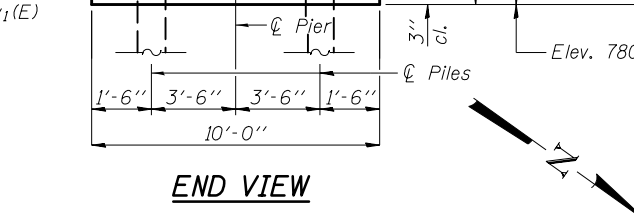
PILE DATA

Type: Metal Shell - 14 in. dia. x 0.312 in. walls with pile shoes
 Nominal Required Bearing: 365 kips
 Factored Resistance Available: 190 kips
 Est. Length: 30 ft
 No. Production Piles: 15
 No. Test Piles: 1



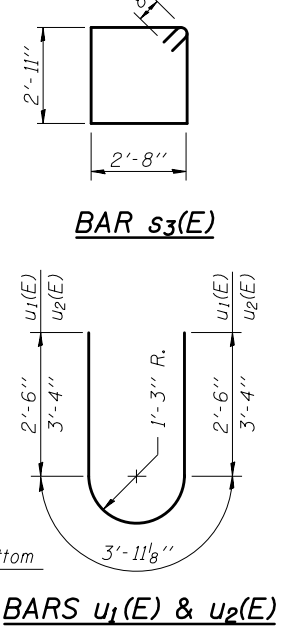
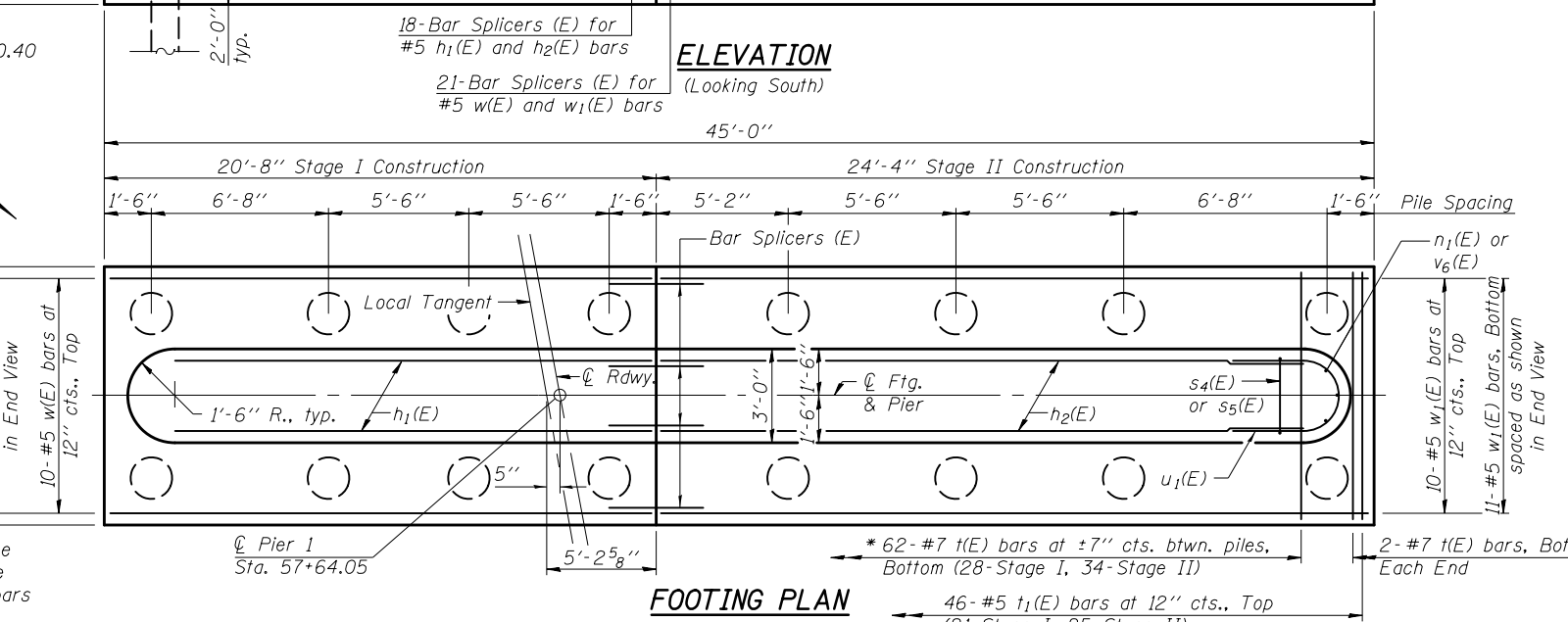
BILL OF MATERIAL

Bar	No.	Size	Length	Shape
h1(E)	18	#5	18'-0"	—
h2(E)	18	#5	21'-8"	—
h3(E)	8	#5	23'-0"	—
h4(E)	8	#5	26'-8"	—
h5(E)	8	#5	5'-4"	—
h6(E)	12	#5	9'-3"	—
h7(E)	4	#5	23'-0"	—
n(E)	72	#9	5'-5"	U
n1(E)	12	#6	6'-4"	U
p4(E)	6	#10	19'-6"	—
p5(E)	6	#10	23'-2"	—
p6(E)	12	#9	23'-0"	—
p7(E)	12	#9	26'-8"	—
p8(E)	12	#10	8'-5"	—
s3(E)	104	#6	12'-6"	□
s4(E)	61	#6	14'-4"	□
s5(E)	61	#6	16'-10"	□
s6(E)	28	#5	8'-10"	□
s7(E)	26	#5	6'-10"	□
s8(E)	20	#6	7'-8"	□
s9(E)	16	#6	7'-0"	□
sp(E)	20	#6	6'-0"	□
sp(E)	4	#4	10'-6"	W
t(E)	66	#7	9'-8"	—
t1(E)	46	#5	9'-8"	—
u1(E)	16	#5	9'-0"	U
u2(E)	14	#6	10'-8"	U
v4(E)	72	#9	12'-11"	—
v6(E)	12	#6	7'-1"	—
w(E)	21	#5	20'-4"	—
w1(E)	21	#5	24'-0"	—



A & B DIMENSIONS

Bar	A	B
s4(E)	2'-8"	5'-10"
s5(E)	2'-8"	7'-1"
s6(E)	2'-8"	3'-1"
s7(E)	2'-8"	2'-1"
s8(E)	2'-8"	2'-6"
s9(E)	2'-8"	2'-2"
sp(E)	1'-0"	2'-6"



* 10 bars per 6'-8" space
 8 bars per 5'-6" space
 8 bars to west and 2 bars to east of stage const. jt.

** Length is height of spiral.
 *** Bar Splicers for h5(E) and h7(E) bars must be placed 4" below the h7(E) bars.