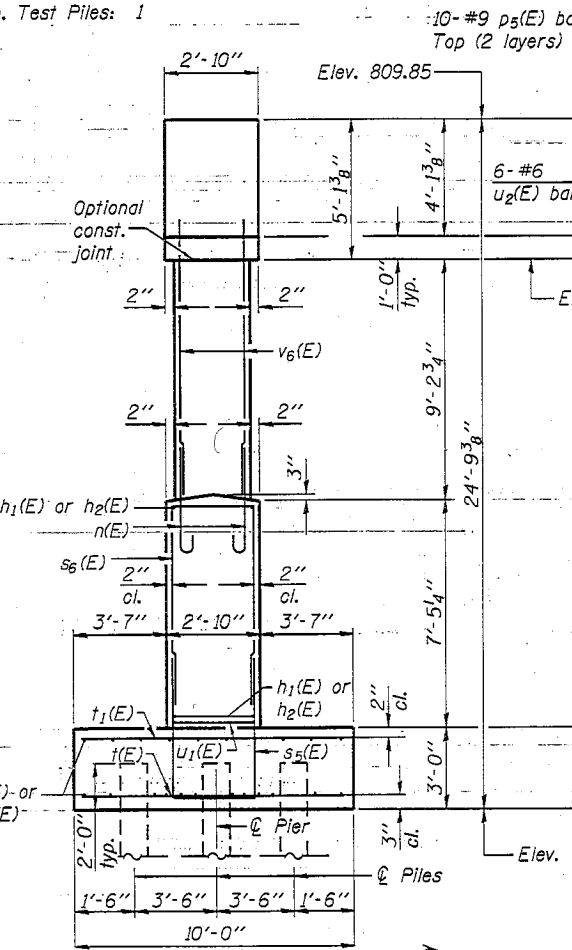
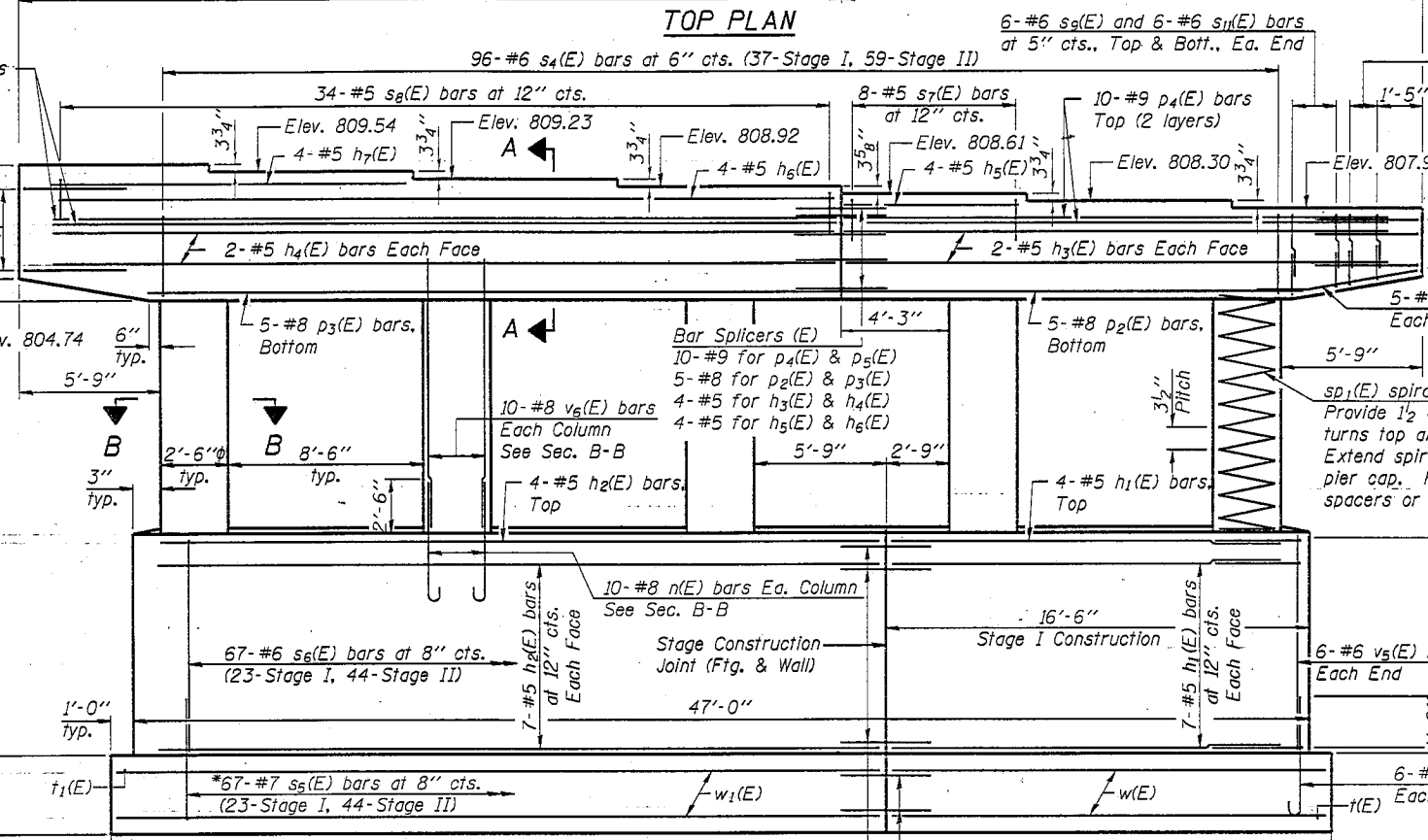
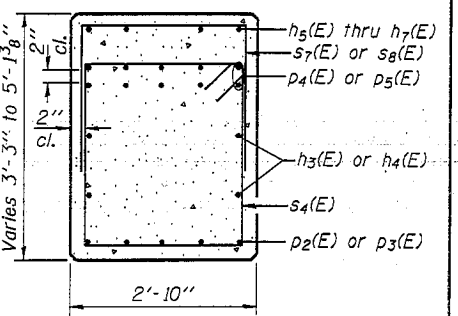
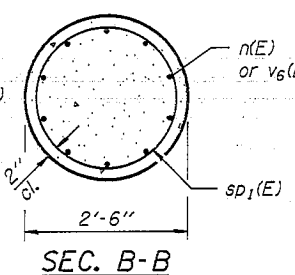
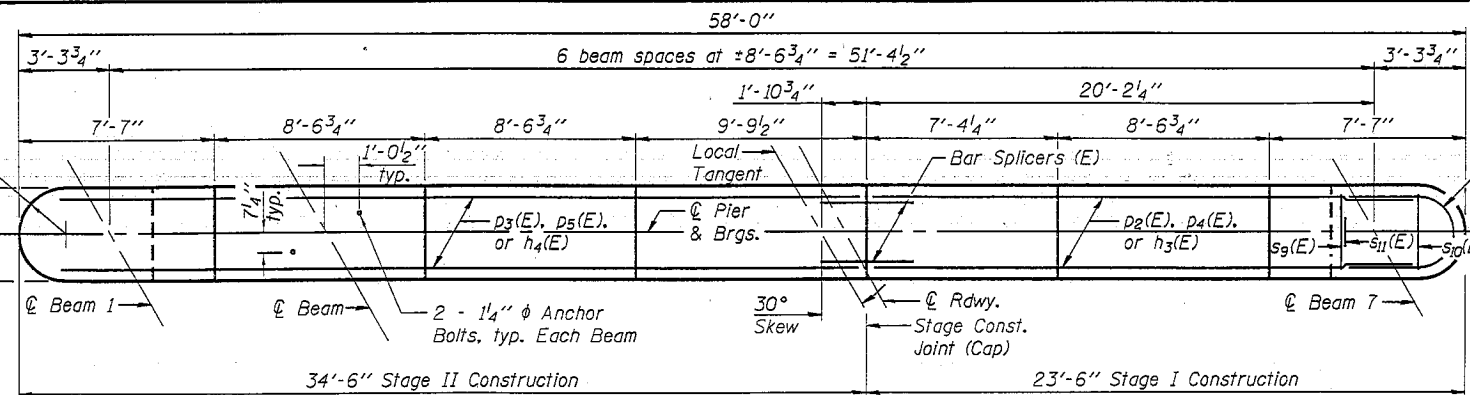


Notes:
 Space reinforcement in cap to miss anchor bolts. See sheet 18 of 28 for details of anchor bolts.
 Pour steps monolithically with cap.
 For details of piles, see sheet 23 of 28.
 For details of Bar Splicers, see sheet 25 of 28.

PILE DATA

Type: Metal Shell - 14 in. dia. x 0.25 in. walls with pile shoes
 Nominal Required Bearing: 249 kips
 Factored Resistance Available: 137 kips
 Est. Length: 30 ft.
 No. Production Piles: 18
 No. Test Piles: 1



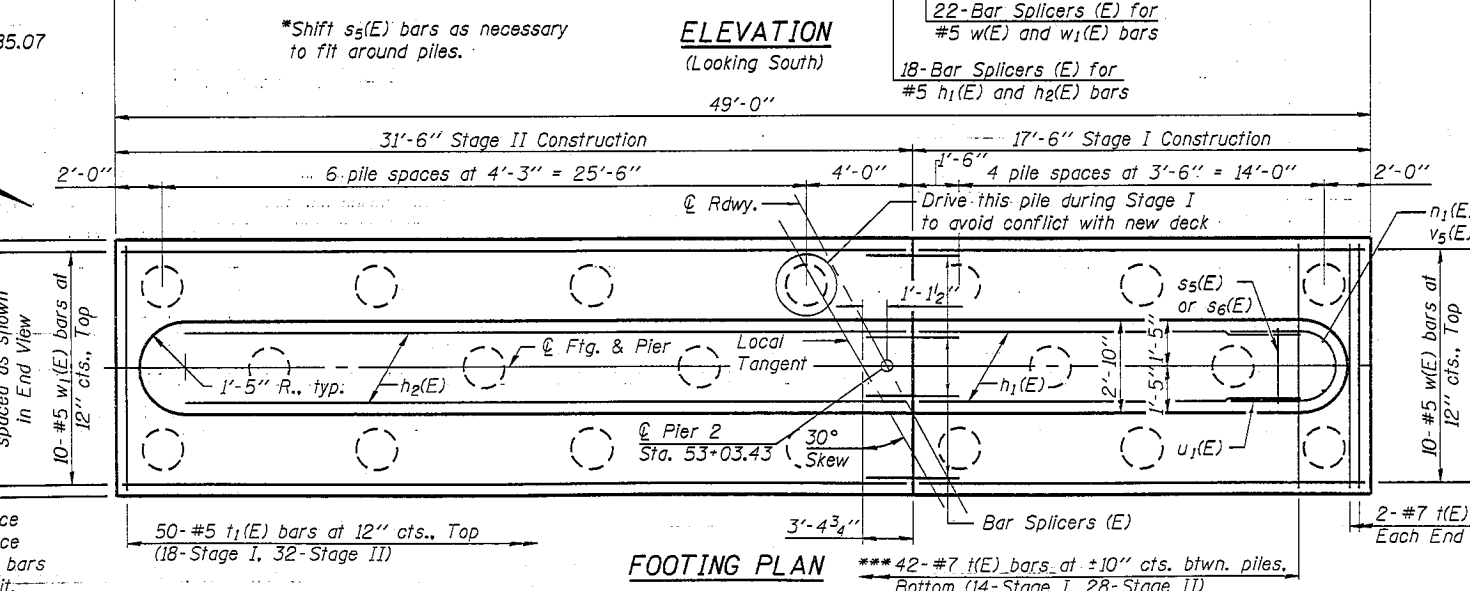
END VIEW

A & B DIMENSIONS

Bar	A	B
s5(E)	2'-6"	6'-11"
s6(E)	2'-6"	7'-3"
s7(E)	2'-6"	1'-7"
s8(E)	2'-6"	2'-10"
s9(E)	2'-6"	2'-6"
s10(E)	2'-6"	2'-2"
s11(E)	10"	2'-6"

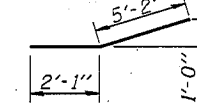
BARS

*** 3 bars per 3'-6" space
 4 bars per 4'-3" space
 2 bars to west and 4 bars to east of stage const. jt.

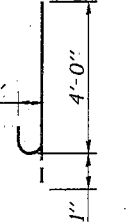


FOOTING PLAN

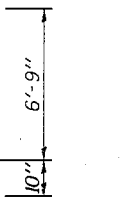
BAR p6(E)



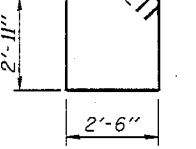
BAR n(E)



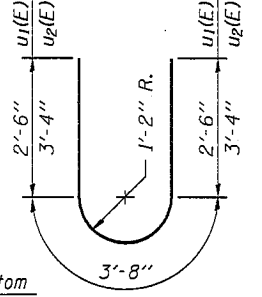
BAR n1(E)



BAR s4(E)



BARS u1(E) & u2(E)



BILL OF MATERIAL

Bar	No.	Size	Length	Shape
h1(E)	18	#5	14'-11"	—
h2(E)	18	#5	28'-11"	—
h3(E)	4	#5	21'-11"	—
h4(E)	4	#5	32'-11"	—
h5(E)	4	#5	7'-0"	—
h6(E)	4	#5	32'-11"	—
h7(E)	4	#5	14'-7"	—
n(E)	50	#8	4'-11"	U
n1(E)	12	#7	7'-7"	U
p2(E)	5	#8	18'-1"	—
p3(E)	5	#8	29'-1"	—
p4(E)	10	#9	21'-11"	—
p5(E)	10	#9	32'-11"	—
p6(E)	10	#4	7'-3"	—
s4(E)	96	#6	12'-2"	□
s5(E)	67	#7	16'-4"	U
s6(E)	67	#6	17'-0"	U
s7(E)	8	#5	5'-8"	U
s8(E)	34	#5	8'-2"	U
s9(E)	24	#6	7'-6"	U
s10(E)	8	#6	6'-10"	U
s11(E)	24	#6	5'-10"	U
sp1(E)	5	#4	9'-5"	AAA
t(E)	46	#7	9'-8"	—
t1(E)	50	#5	9'-8"	—
u1(E)	16	#5	8'-8"	U
u2(E)	10	#6	10'-4"	U
v5(E)	12	#6	7'-3"	—
v6(E)	50	#8	11'-10"	—
w(E)	22	#5	17'-2"	—
w1(E)	22	#5	31'-2"	—
Structure Excavation	Cu. Yd.		194	
Concrete Structures	Cu. Yd.		122.8	
Reinforcement Bars, Epoxy Coated	Pound		16600	
Furnishing Metal Shell Piles 14" x 0.250"	Foot		540	
Driving Piles	Foot		540	
Test Pile Metal Shells	Each		1	
Pile Shoes	Each		19	
Concrete Sealer	Sq. Ft.		1746	

*** Length is height of spiral.