

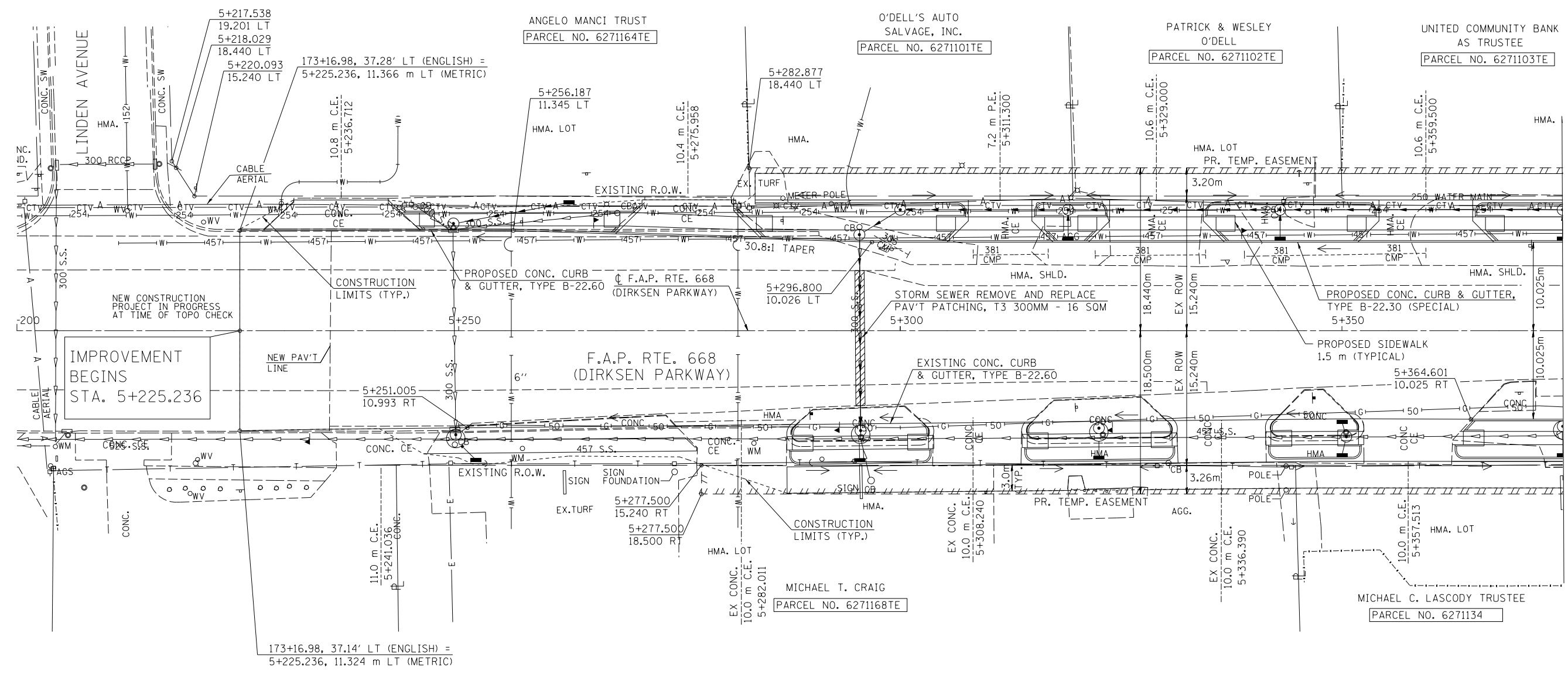
F.A.P. RTE.	SECTION	COUNTY	TOTAL SHEETS	SHEET NO.
668	28R-1	SANGAMON	354	61
STA. 5+200.000		TO STA. 5+375.000		
FED. ROAD DIST. NO.		ILLINOIS	FED. AID PROJECT	
CONTRACT NO. 72501				

BM WS-2 CHSLD 'X' ON NORTH SIDE OF NE BOLT OF THE PARKWAY MOTORS SIGN SW QUAD OF DIRKSEN PKWY & LINDEN AVE STA. 5+200.25, 17.53m LT, ELEV 181.094m

SEC 25, T16N, R5W, 3RD P.M.

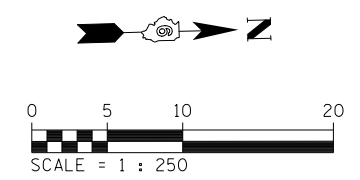
FINAL SURVEY PLOTTED	BY	DATE
NOTE BOOK TEMPLATE		
AREAS CHECKED		
NO.		

ORIGINAL SURVEY PLOTTED	BY	DATE
NOTE BOOK TEMPLATE		
AREAS CHECKED		
NO.		



NOTE:
SEE DRAINAGE PLANS FOR STATION, OFFSET, AND ELEVATION INFORMATION FOR PROPOSED CURB AND GUTTER SECTIONS BEYOND PROPOSED SIDEWALK. ALL CURB AND GUTTER POINTS ARE CALLED OUT TO THE TOP OF FACE OF CURB.

MATCH LINE STA. 5+375
SEE SHEET 63



REVISIONS	
NAME	DATE

ILLINOIS DEPARTMENT OF TRANSPORTATION
ROADWAY PLANS
F.A.P. ROUTE 668 (DIRKSEN PARKWAY)
SECTION 28R-1
SANGAMON COUNTY

SCALE 1 : 250
DATE 06/2013

DRAWN BY RK
CHECKED BY FML