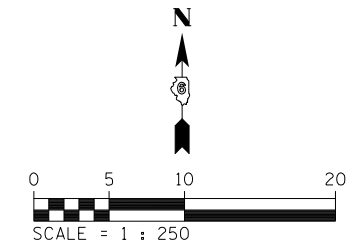
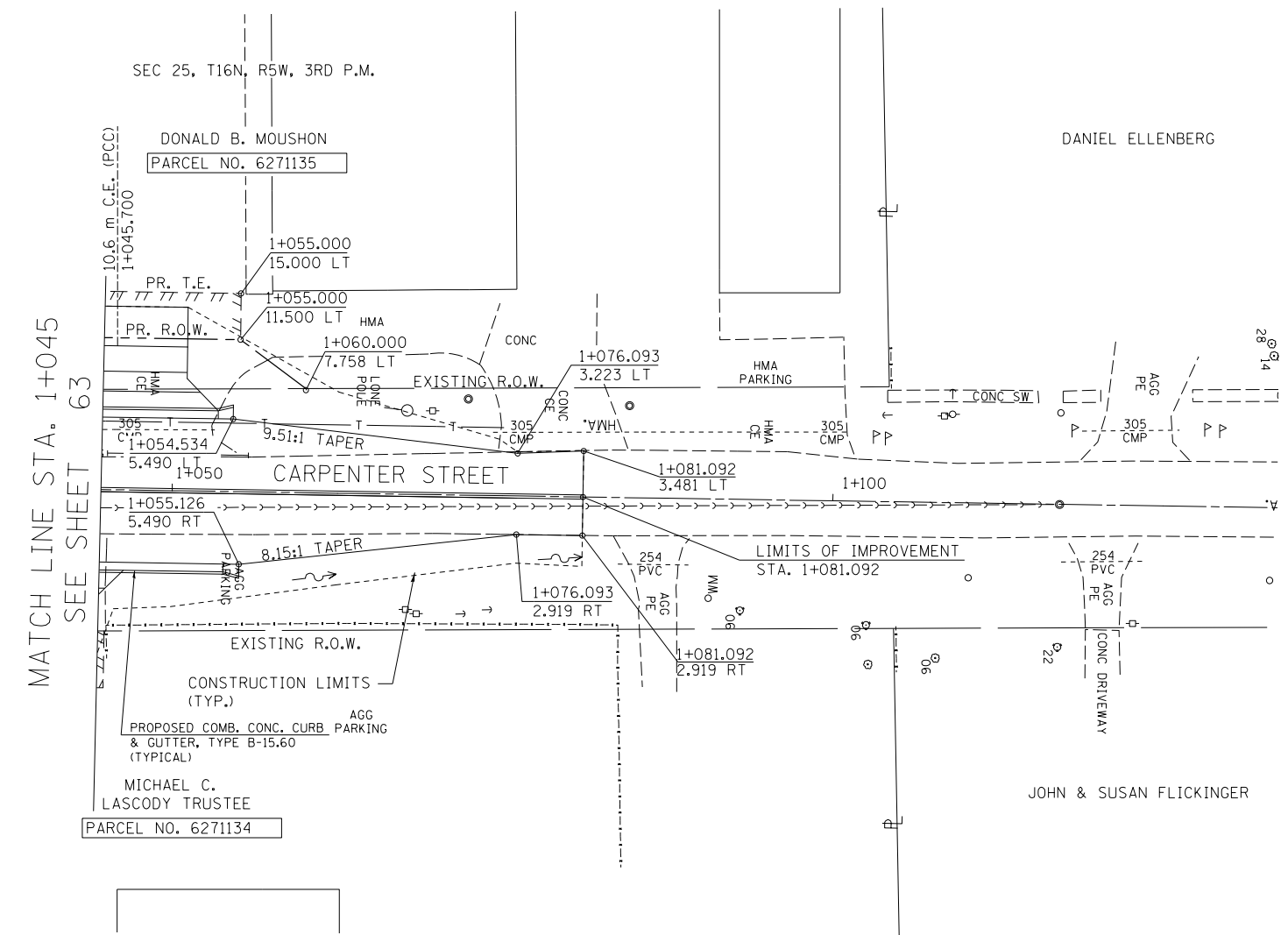


F.A.P. RTE.	SECTION	COUNTY	TOTAL SHEETS	SHEET NO.
668	28R-1	SANGAMON	354	84
STA.	1+045.000	TO STA.	1+134.000	
FED. ROAD DIST. NO.	ILLINOIS	FED. AID PROJECT		
CONTRACT NO. 72501				

FINAL SURVEY PLOTTED	BY	DATE
NO.		
SURVEYED		
PLOTTED		
NOTE BOOK TEMPLATE		
AREAS CHECKED		

ORIGINAL SURVEY PLOTTED	BY	DATE
NO.		
SURVEYED		
PLOTTED		
NOTE BOOK TEMPLATE		
AREAS CHECKED		



NOTE:
SEE DRAINAGE PLANS FOR STATION, OFFSET, AND ELEVATION INFORMATION FOR PROPOSED CURB AND GUTTER SECTIONS BEYOND PROPOSED SIDEWALK. ALL CURB AND GUTTER POINTS ARE CALLED OUT TO THE TOP OF FACE OF CURB.

REVISIONS	
NAME	DATE

ILLINOIS DEPARTMENT OF TRANSPORTATION
ROADWAY PLANS
F.A.P. ROUTE 668 (DIRKSEN PARKWAY)
SECTION 28R-1
SANGAMON COUNTY

SCALE 1 : 250
DATE 06/2013

DRAWN BY RK
CHECKED BY FML