

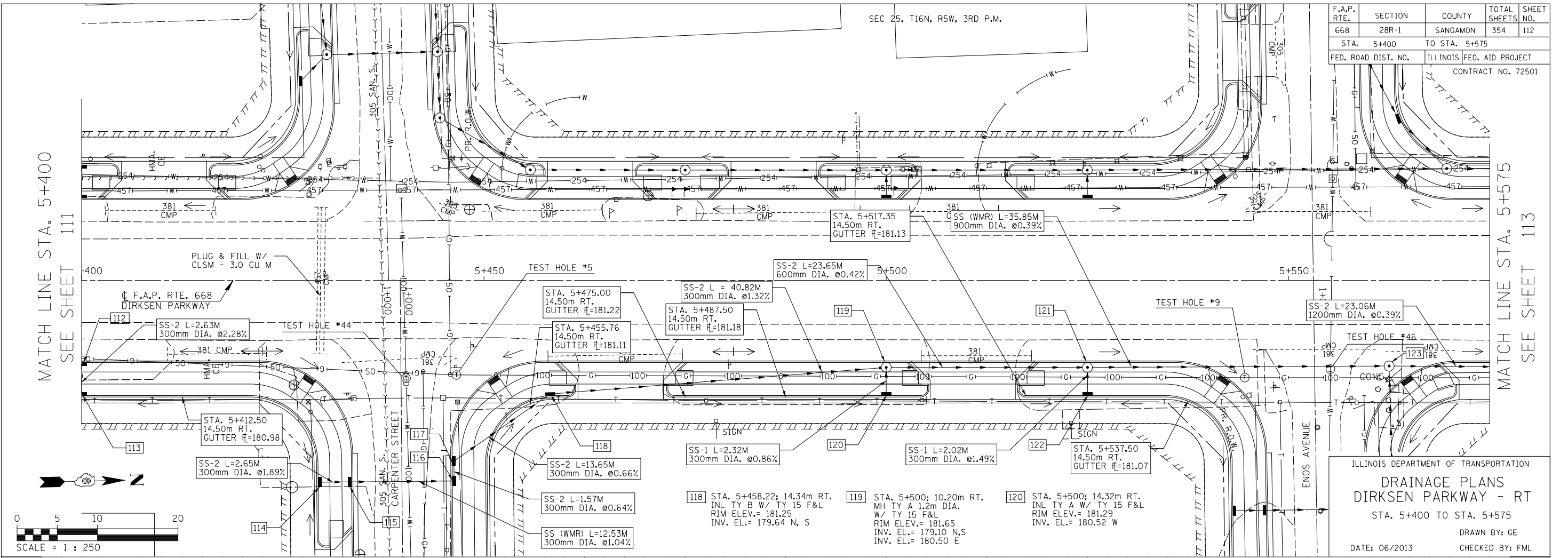
SEC 25, T16N, R5W, 3RD P.M.

F.A.P. RTE.	SECTION	COUNTY	TOTAL SHEETS	SHEET NO.
668	28R-1	SANGAMON	354	112
STA. 5+400	TO STA. 5+575			
FED. ROAD DIST. NO.	ILLINOIS	FED. AID PROJECT		
		CONTRACT NO. 72501		

FINAL SURVEY PLOTTED	BY	DATE
NOTE BOOK TEMPLATE		
AREAS CHECKED		
NO.		

MATCH LINE STA. 5+400
SEE SHEET 111

MATCH LINE STA. 5+575
SEE SHEET 113



ILLINOIS DEPARTMENT OF TRANSPORTATION
DRAINAGE PLANS
DIRKSEN PARKWAY - RT
STA. 5+400 TO STA. 5+575
DRAWN BY: GE
DATE: 06/2013
CHECKED BY: FML

ORIGINAL SURVEY PLOTTED	BY	DATE
NOTE BOOK TEMPLATE		
AREAS CHECKED		
NO.		

