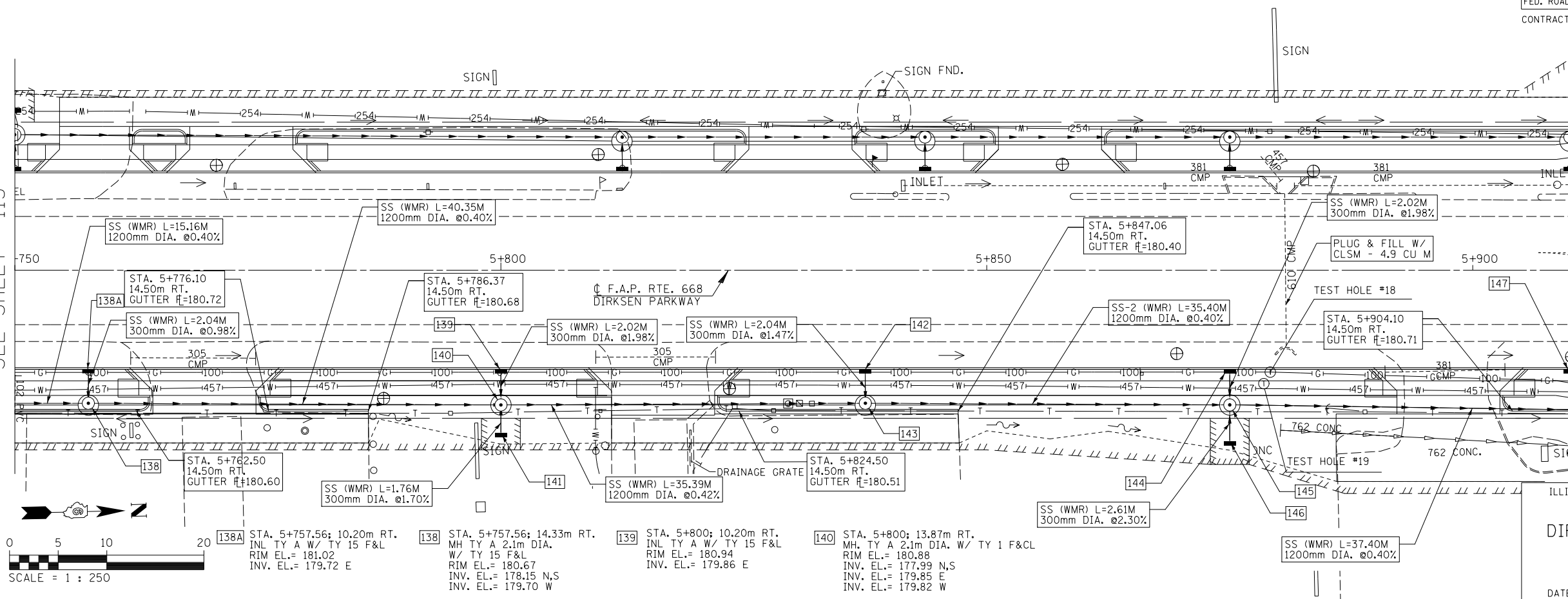


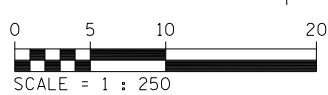
F.A.P. RTE.	SECTION	COUNTY	TOTAL SHEETS	SHEET NO.
668	28R-1	SANGAMON	354	114
STA.		TO STA.		
FED. ROAD DIST. NO.		ILLINOIS	FED. AID PROJECT	
CONTRACT NO. 72501				

FINAL SURVEY PLOTTED	BY	DATE
NOTE BOOK TEMPLATE		
AREAS CHECKED		
NO.		

MATCH LINE STA. 5+750
SEE SHEET 113



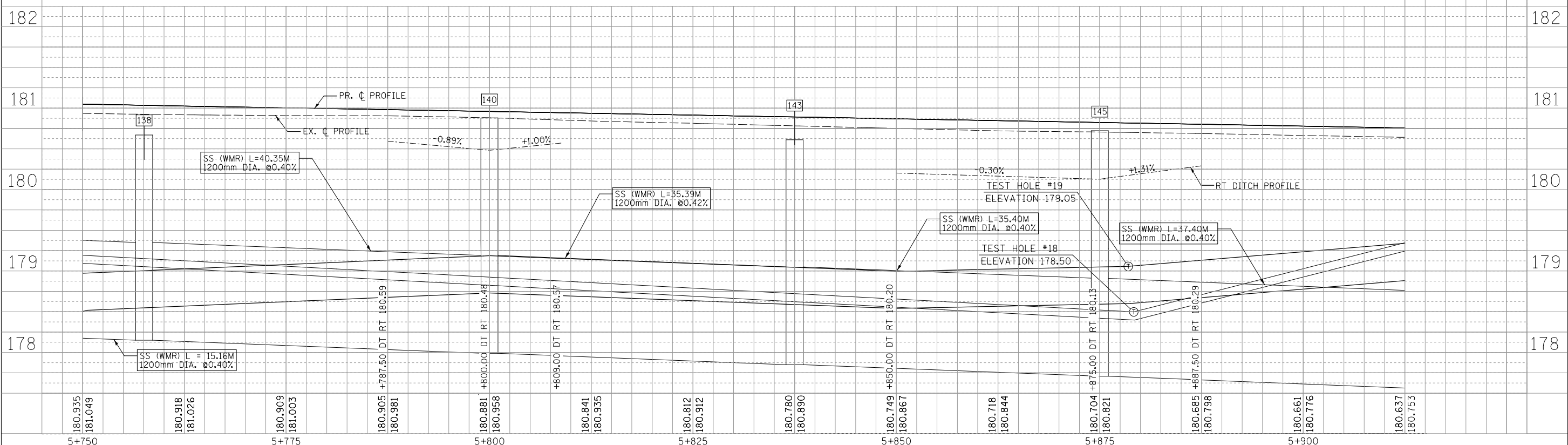
MATCH LINE STA. 5+910
SEE SHEET 115



ILLINOIS DEPARTMENT OF TRANSPORTATION
DRAINAGE PLANS
DIRKSEN PARKWAY - RT
STA. 5+750 TO STA. 5+910
DRAWN BY: GE
DATE: 06/2013
CHECKED BY: FML

- [141] STA. 5+800; 16.98m RT. INL TY A W/ TY 8 G RIM EL.= 180.48 INV. EL.= 179.88 W
- [142] STA. 5+837.50; 10.20m RT. INL TY A W/ TY 15 F&L RIM EL.= 180.87 INV. EL.= 179.82 E
- [143] STA. 5+837.50; 14.32m RT. MH TY A 2.1m DIA. W/ TY 15 F&L RIM EL.= 180.61 INV. EL.= 177.85 N, S INV. EL.= 179.79 W
- [144] STA. 5+875; 10.20m RT. INL TY A W/ TY 15 F&L RIM EL.= 180.80 INV. EL.= 179.72 E
- [145] STA. 5+875; 13.87m RT. MH TY A 2.1m DIA. W/ TY 1 F&CL RIM EL.= 180.72 INV. EL.= 177.71 N,S INV. EL.=179.41 E INV. EL.=179.68 W
- [146] STA. 5+875; 17.83m RT. INL TY A W/ TY 8 G RIM EL.= 180.12 INV. EL.= 179.46 W
- [147] STA. 5+910; 10.20m RT. INL TY A W/ TY 15 F&L RIM EL.= 180.74 INV. EL.= 179.69 NE

ORIGINAL SURVEY PLOTTED	BY	DATE
NOTE BOOK TEMPLATE		
AREAS CHECKED		
NO.		



180.935 181.049 180.918 181.026 180.909 181.003 180.905 180.981 180.881 180.958 180.841 180.935 180.812 180.912 180.760 180.890 180.749 180.867 180.718 180.844 180.704 180.821 180.685 180.798 180.661 180.776 180.637 180.753