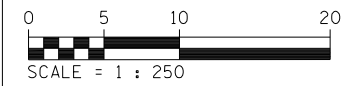
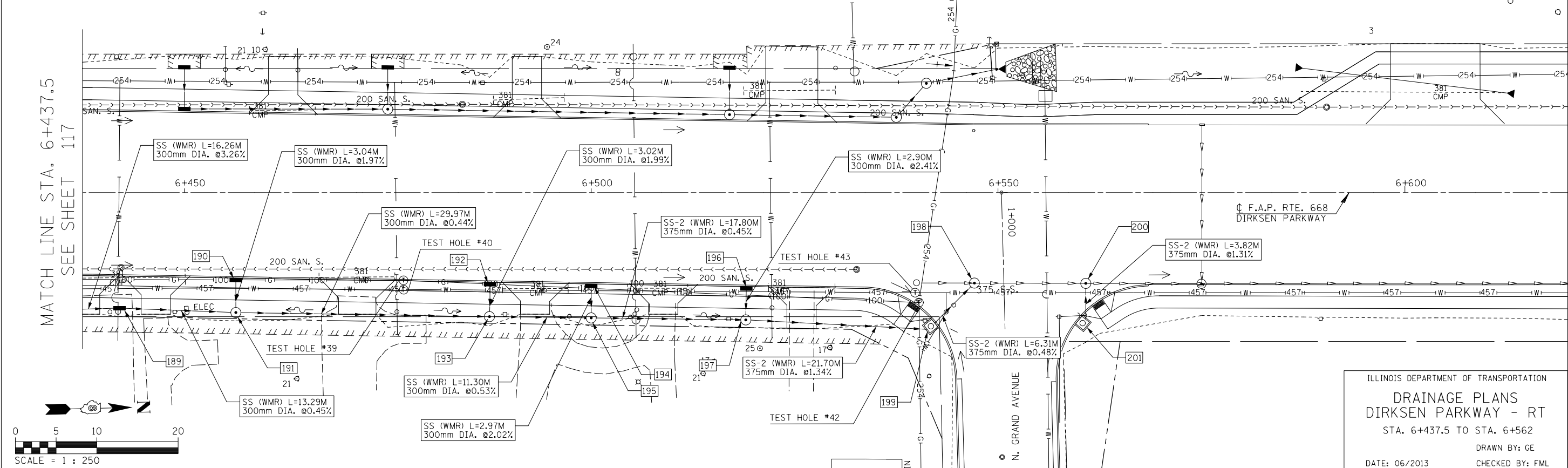


F.A.P. RTE.	SECTION	COUNTY	TOTAL SHEETS	SHEET NO.
668	28R-1	SANGAMON	354	118
STA. 6+437.5		TO STA. 6+562		
FED. ROAD DIST. NO.		ILLINOIS		FED. AID PROJECT
CONTRACT NO. 72501				

FINAL SURVEY PLOTTED	BY	DATE
NOTE BOOK TEMPLATE		
AREAS CHECKED		
NO.		

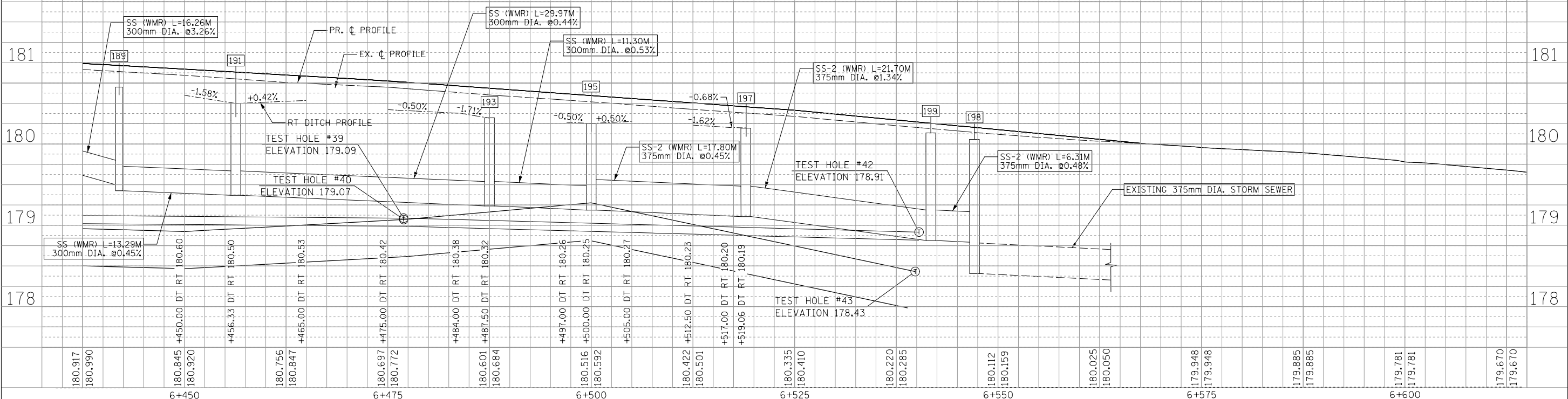
MATCH LINE STA. 6+437.5  
SEE SHEET 117



ILLINOIS DEPARTMENT OF TRANSPORTATION  
**DRAINAGE PLANS**  
 DIRKSEN PARKWAY - RT  
 STA. 6+437.5 TO STA. 6+562  
 DRAWN BY: GE  
 DATE: 06/2013  
 CHECKED BY: FML

189 STA. 6+442; 14.19m RT. INL TY B W/ TY 8 F&G RIM EL.=180.70 INV. EL.=179.43 N,S	190 STA. 6+456.33; 10.49m RT. INL TY A W/ TY 15 F&L RIM EL.=180.87 INV. EL.=179.94 E	191 STA. 6+456.33; 14.74m RT. MH TY A 1.2m DIA. W/ TY 8 G RIM EL.=180.50 INV. EL.=179.37 N,S INV. EL.=179.88 W	192 STA. 6+487.50; 11.01m RT. INL TY A W/ TY 15 F&L RIM EL.=180.68 INV. EL.=179.71 E	193 STA. 6+487.50; 15.24m RT. INL TY A W/ TY 8 G RIM EL.=180.32 INV. EL.=179.24 N,S INV. EL.=179.65 W	194 STA. 6+500; 11.22m RT. INL TY A W/ TY 15 F&L RIM EL.=180.59 INV. EL.=179.62 E
195 STA. 6+500; 15.39m RT. MH TY A 1.2m DIA. W/ TY 8 G RIM EL.=180.25 INV. EL.=179.18 N,S INV. EL.=179.56 W	196 STA. 6+519; 11.53m RT. INL TY A W/ TY 15 F&L RIM EL.=180.45 INV. EL.=179.50 E	197 STA. 6+519; 15.64m RT. MH TY A 1.2m DIA. W/ TY 8 G RIM EL.=180.19 INV. EL.=179.10 N,S INV. EL.=179.43 W	198 STA. 6+547.10; 11.12m RT. MH TY A 1.2m DIA. W/ TY 1 F&CL RIM EL.=180.05 INV. EL.=178.79 E INV. EL.= MATCH EX. N	199 STA. 1+015.80; (N. GRAND AVE) 8.61m RT. INLET (SPECIAL) TY E RIM EL.=180.13 INV. EL.=178.81 S,W	200 STA. 6+560.78; 11.15m RT. MH TY A 1.2m DIA. W/ TY 1 F&CL RIM EL.=179.92 INV. EL.=178.66 E INV. EL.= MATCH EX. N, S
					201 STA. 1+015.89; (N. GRAND AVE) 9.07m LT. INLET (SPECIAL) TY E RIM EL.=180.16 INV. EL.=178.80 W

ORIGINAL SURVEY PLOTTED	BY	DATE
NOTE BOOK TEMPLATE		
AREAS CHECKED		
NO.		



180.917	180.990	180.845	180.920	180.756	180.847	180.697	180.772	180.601	180.684	180.516	180.592	180.422	180.501	180.335	180.410	180.220	180.285	180.112	180.159	180.025	180.050	179.948	179.948	179.885	179.885	179.781	179.781	179.670	179.670
6+450				6+475				6+500				6+525				6+550						6+575						6+600	