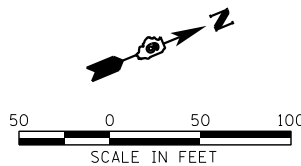


F.A.S. RTE.	SECTION	COUNTY	TOTAL SHEETS	SHEET NO.
1597	14 (W, RS-7)	ADAMS/PIKE	152	31
STA. 975+00.00 TO STA. 1325+50.00				
FED. ROAD DIST. NO. 6 ILLINOIS FED. AID PROJECT				

N.E. 1/4, SEC 15, T.4S., R.7W., 4TH P.M.

S.E. 1/4, SEC 10, T.4S., R.7W., 4TH P.M.

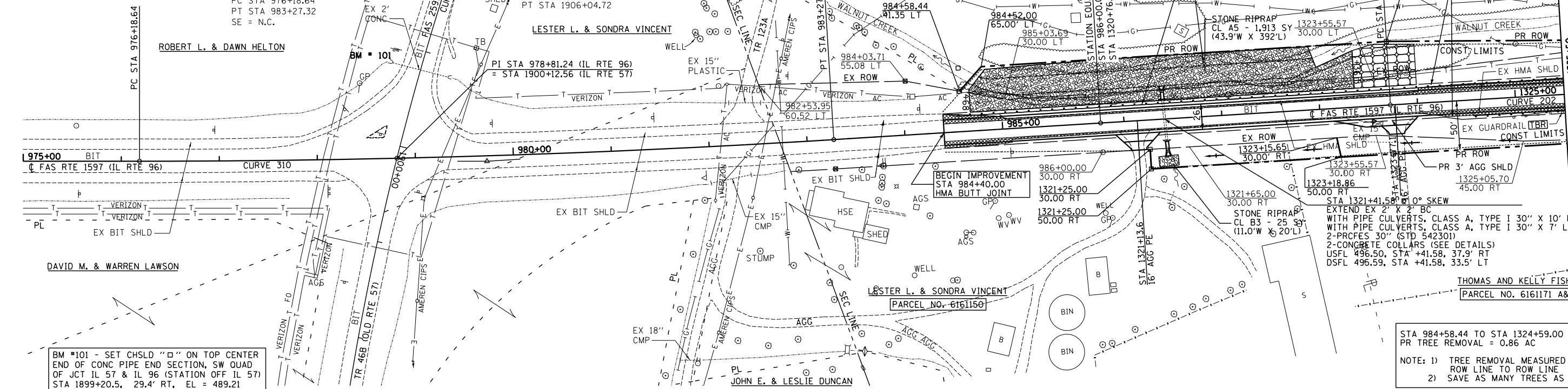


EX CURVE 310
 PI STA 979+73.09
 $\Delta = 3^\circ 33' 54''$ (LT)
 $D = 0^\circ 30' 11''$
 $T = 354.45'$
 $R = 11,390.11'$
 $L = 708.68'$
 $E = 5.51'$
 PC STA 976+18.64
 PT STA 983+27.32
 SE = N.C.

EX CURVE 215 (IL RTE 57)
 PI STA 1900+18.42
 $\Delta = 23^\circ 47' 28''$ (LT)
 $D = 1^\circ 59' 57''$
 $T = 603.70'$
 $R = 2,865.86'$
 $L = 1,190.00'$
 $E = 62.89'$
 PC STA 1894+14.72
 PT STA 1906+04.72

EX / PROP CURVE 202
 PI STA 1326+72.30
 $\Delta = 0^\circ 38' 03''$ (RT)
 $D = 0^\circ 06' 20''$
 $T = 300.00'$
 $R = 54,209.13'$
 $L = 599.99'$
 $E = 0.83'$
 PC STA 1323+72.30
 PT STA 1329+72.29
 SE = N.C.

PLAN	DATE
SURVEYED	
PLOTTED	
CHECKED	
BY	
NO. OF WAY CHECKED	
NO.	
FILE NAME	



BM *101 - SET CHSLD "□" ON TOP CENTER END OF JCT IL 57 & IL 96 (STATION OFF IL 57) STA 1899+20.5, 29.4' RT, EL = 489.21

STA 984+58.44 TO STA 1324+59.00
 PR TREE REMOVAL = 0.86 AC
 NOTE: 1) TREE REMOVAL MEASURED FROM ROW LINE TO ROW LINE
 2) SAVE AS MANY TREES AS POSSIBLE

PROFILE	DATE
SURVEYED	
PLOTTED	
CHECKED	
BY	
NO. OF WAY CHECKED	
NO.	
FILE NAME	

