

F.A.S. RTE.	SECTION	COUNTY	TOTAL SHEETS	SHEET NO.
1597	14 (W. RS-7)	ADAMS/PIKE	152	33

STA. 1336+00.00 TO STA. 1352+00.00
 FED. ROAD DIST. NO. 6 ILLINOIS FED. AID PROJECT

N.E. 1/4, SEC 10, T.4S., R.7W., 4TH P.M.

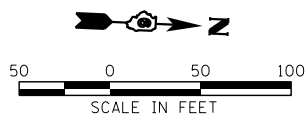
RUTH PETERS COLE

1/4 SEC LINE & PL

STA 1339+00.00 TO STA 1352+00.00
 PR TREE REMOVAL = 2.68 AC

NOTE: 1) TREE REMOVAL MEASURED FROM ROW LINE TO ROW LINE
 2) SAVE AS MANY TREES AS POSSIBLE

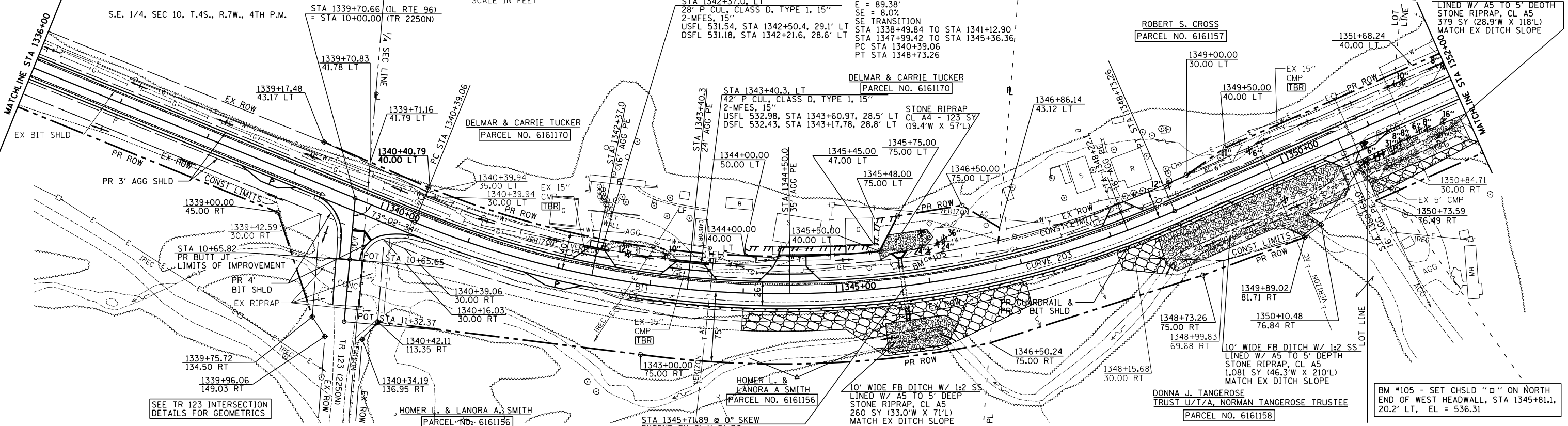
FIRST BANKERS TRUST
 PARCEL NO. 6161153



S.E. 1/4, SEC 10, T.4S., R.7W., 4TH P.M.

STA 1339+70.66 (IL RTE 96)
 = STA 10+00.00 (TR 2250N)

EX / PROP CURVE 203
 PI STA 1344+79.94
 $\Delta = 45^\circ 50' 36''$ (LT)
 $D = 5^\circ 29' 44''$
 $R = 1,042.59'$
 $E = 834.20'$
 $F = 89.38'$
 $SE = 8.0\%$
 SE TRANSITION
 STA 1338+49.84 TO STA 1341+12.90
 STA 1347+99.42 TO STA 1345+36.36
 PC STA 1340+39.06
 PT STA 1348+73.26



SEE TR 123 INTERSECTION DETAILS FOR GEOMETRICS

STA 1345+71.89 @ 0° SKEW
 EXTEND EX 3' X 5' BC
 LT - SEE CUL DETAIL SHIT
 RT - 8' PCBC, 3' X 5', ASTM C1577
 DESIGN FILL = 4.1 MIN / 6.0 MAX
 12.8 CY GRANULAR CULVERT BACKFILL
 1 - BOX CUL END SEC C2
 USFL 529.89, 31.0' LT
 DSFL 529.28, 37.1' RT

DATE	BY	PLAN
		SURVEYED
		PLOTTED
		CHECKED
		NOTE BOOK
		NO. _____
		STRUCTURE NOTATIONS CHKD
		NO. _____

DATE	BY	PROFILE
		SURVEYED
		PLOTTED
		CHECKED
		NOTE BOOK
		NO. _____
		STRUCTURE NOTATIONS CHKD
		NO. _____

