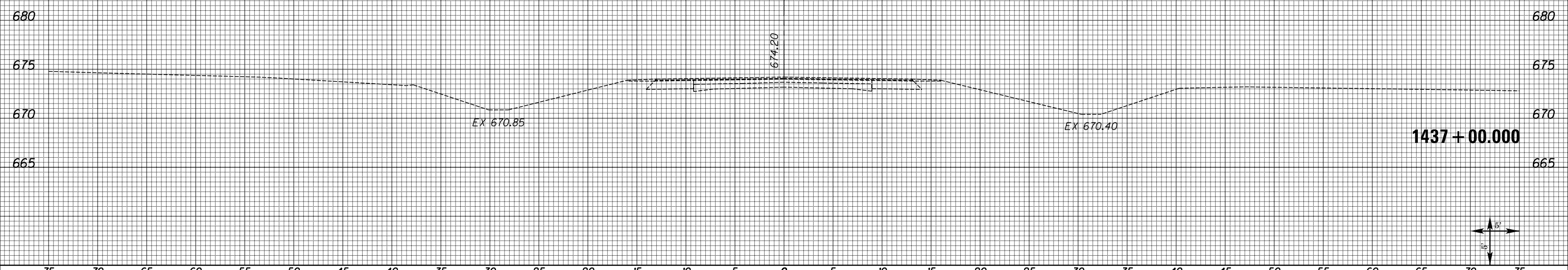


75 70 65 60 55 50 45 40 35 30 25 20 15 10 5 0 5 10 15 20 25 30 35 40 45 50 55 60 65 70 75

FINAL SURVEY NO.	SURVEYED PLOTTED AREAS CHECKED	BY	DATE
NOTE BOOK	TEMPLATE		

ORIGINAL SURVEY NO.	SURVEYED PLOTTED AREAS CHECKED	BY	DATE
NOTE BOOK	TEMPLATE		



FILE NAME = XS_SHEETS-NEW.dgn	USER NAME = notel	DESIGNED -	REVISIED -	<b>STATE OF ILLINOIS DEPARTMENT OF TRANSPORTATION</b>	<b>FAS 1597 (IL 96) CROSS SECTIONS</b>		F.A.S. RTE. 1597	SECTION 14 (W, RS-7)	COUNTY ADAMS/PIKE	TOTAL SHEETS 152	SHEET NO. 147	
	PLOT SCALE = 10.0000' / in.	CHECKED -	REVISIED -		SCALE: SHOWN	SHEET NO. 72 OF 72 SHEETS	STA. 1437+00.000	STA. 1437+00.000	<b>CONTRACT NO. 72781</b>			
	PLOT DATE = 8/16/2013	DATE -	REVISIED -		ILLINOIS FED. AID PROJECT							