

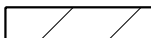

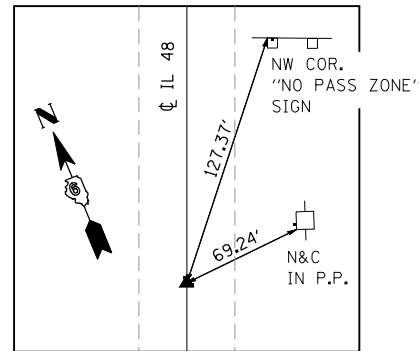


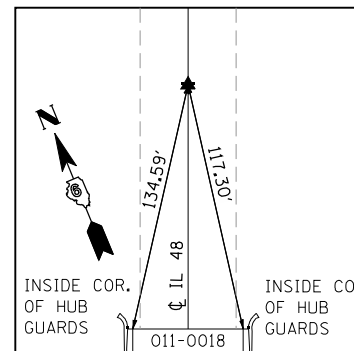
**LEGEND**

-  STONE RIPRAP, CLASS A5
-  STONE RIPRAP, CLASS A4
-  TREE REMOVAL, ACRES
-  TREE REMOVAL (OVER 15 UNITS DIAMETER)



**CONTROL POINT #1**

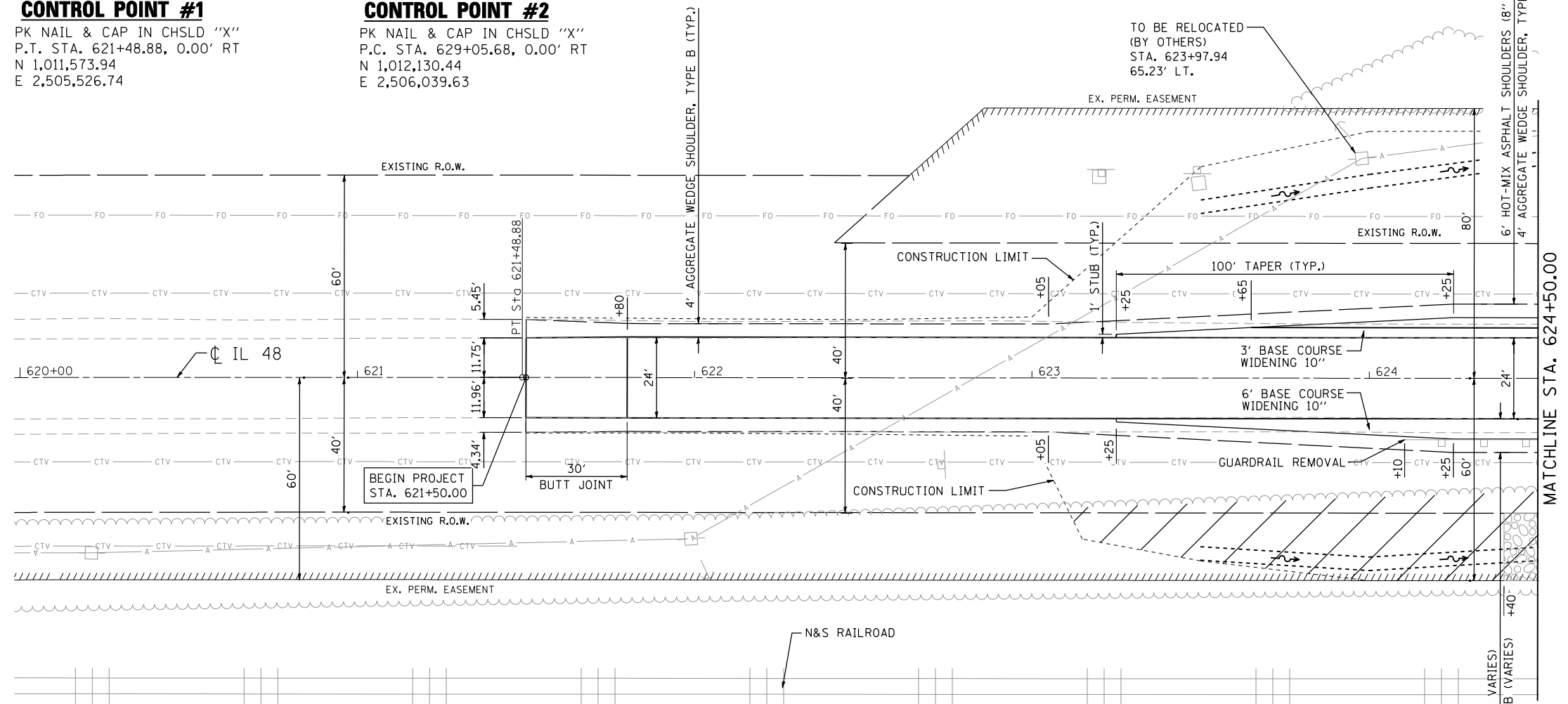
PK NAIL & CAP IN CHSLD "X"  
 P.T. STA. 621+48.88, 0.00' RT  
 N 1,011,573.94  
 E 2,505,526.74



**CONTROL POINT #2**

PK NAIL & CAP IN CHSLD "X"  
 P.C. STA. 629+05.68, 0.00' RT  
 N 1,012,130.44  
 E 2,506,039.63

PLAN	SURVEYED	DATE
NOTE BOOK NO.	BY	
	CHECKED	
	ALIGNED	
	FILE NAME	



MATCHLINE STA. 624+50.00

6' HOT-MIX ASPHALT SHOULDERS (8" & VARIES)  
 4' AGGREGATE WEDGE SHOULDER, TYPE B (VARIES)

TO BE RELOCATED  
 (BY OTHERS)  
 STA. 623+97.94  
 65.23' LT.

EX. PERM. EASEMENT

EXISTING R.O.W.

CONSTRUCTION LIMIT

100' TAPER (TYP.)

3' BASE COURSE WIDENING 10"

6' BASE COURSE WIDENING 10"

GUARDRAIL REMOVAL

EXISTING R.O.W.

EX. PERM. EASEMENT

N&S RAILROAD

EXIST. CURVE 4  
 PI STA. = 617+28.00  
 $\Delta = 0^\circ 51' 26''$  (RT)  
 $D = 0^\circ 06' 07''$   
 $R = 56,258.05'$   
 $T = 420.90'$   
 $L = 841.78'$   
 $E = 1.57'$   
 P.C. STA. = 613+07.10  
 P.T. STA. = 621+48.88

