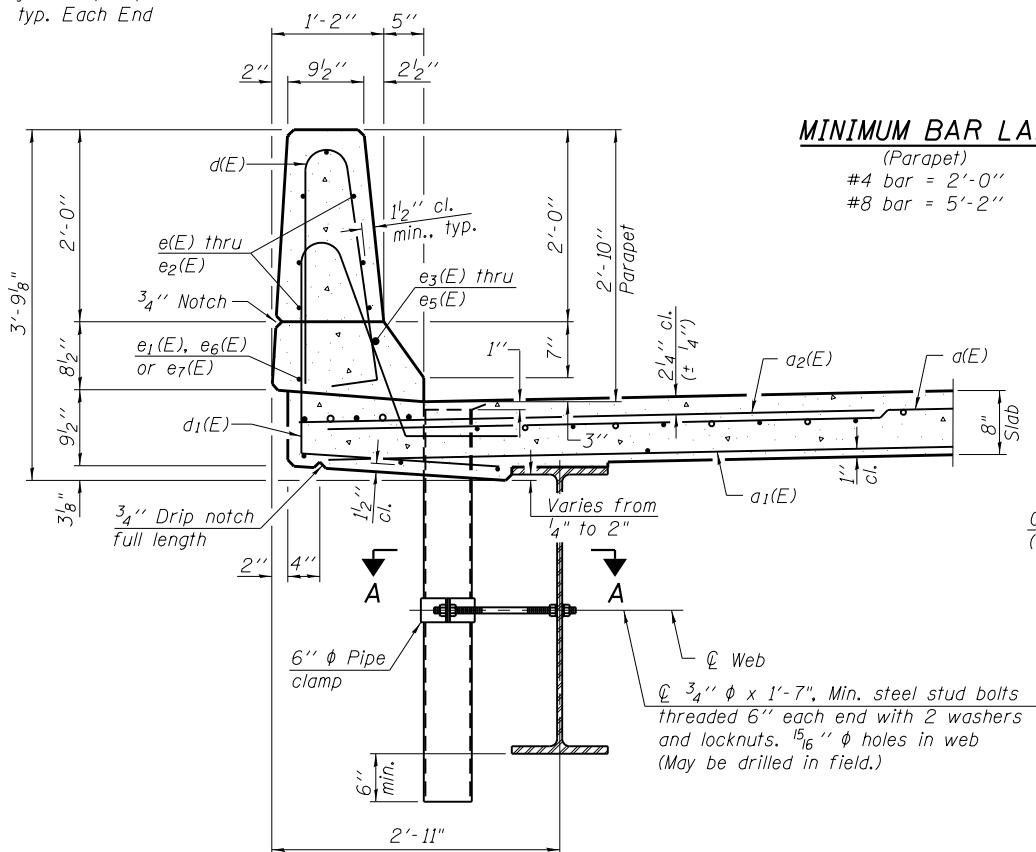
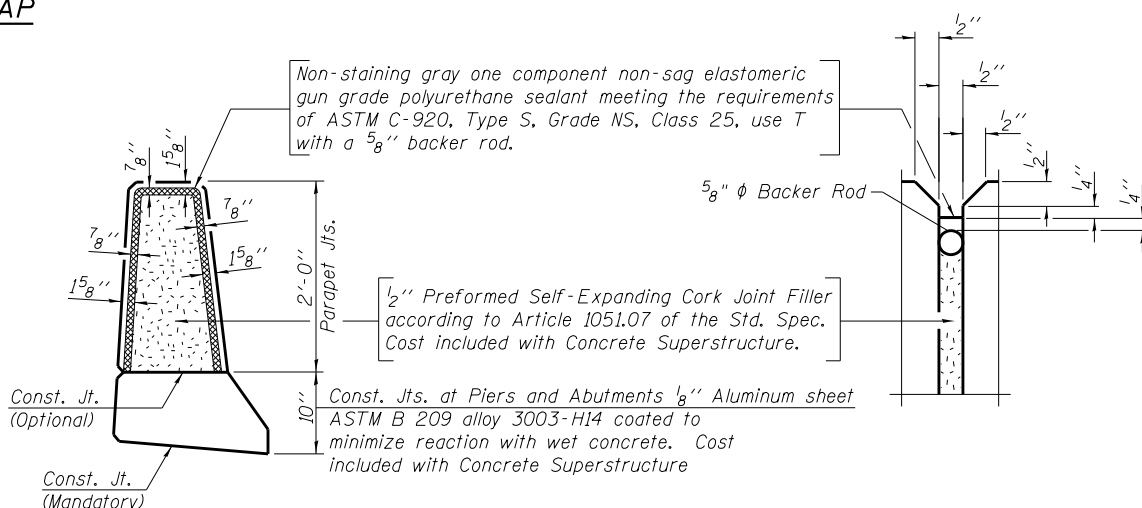


INSIDE ELEVATION OF PARAPET



MINIMUM BAR LAP
(Parapet)
#4 bar = 2'-0"
#8 bar = 5'-2"



PARAPET JOINT DETAILS

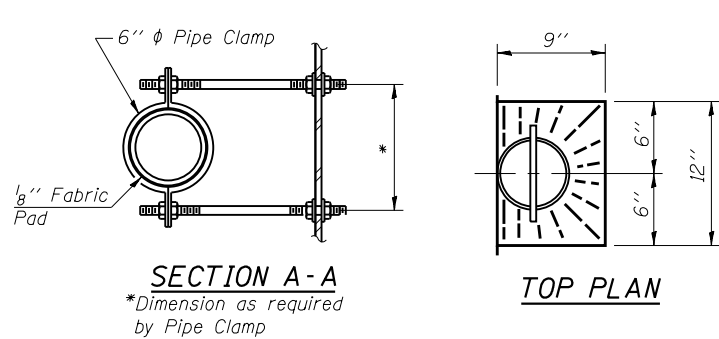
Notes:
Drains shall be located clear of all diaphragms.
Floor drains need not be painted.
Fiberglass pipe shall conform to ASTM D 2996, with short-time rupture strength hoop tensile stress of 30,000 p.s.i. minimum.
Galvanize clamping device according to AASHTO M232. Cost of clamping device and inserts is included with Floor Drains.

SUPERSTRUCTURE BILL OF MATERIAL

Bar	No.	Size	Length	Shape
a(E)	710	#5	19'-1"	—
a1(E)	428	#5	18'-9"	—
a2(E)	696	#6	6'-6"	—
a3(E)	8	#5	22'-3"	—
b(E)	294	#5	27'-7"	—
b1(E)	76	#6	40'-0"	—
b2(E)	288	#5	24'-6"	—
d(E)	390	#5	5'-7"	⌒
d1(E)	388	#5	7'-8"	⌒
e(E)	84	#4	14'-4"	—
e1(E)	64	#4	8'-9"	—
e2(E)	42	#4	17'-9"	—
e3(E)	8	#8	24'-5"	—
e4(E)	8	#8	8'-9"	—
e5(E)	4	#8	29'-6"	—
e6(E)	8	#4	22'-10"	—
e7(E)	4	#4	27'-11"	—
m(E)	16	#6	22'-3"	—
m1(E)	24	#6	7'-4"	—
m2(E)	12	#6	3'-0"	—
m3(E)	12	#6	3'-6"	—
m4(E)	36	#5	4'-0"	—
s(E)	84	#5	7'-10"	⌒
s1(E)	84	#5	9'-10"	⌒
v(E)	80	#5	3'-1"	⌒
Concrete Superstructure		Cu. Yd.	250.9	
Bridge Deck Grooving		Sq. Yd.	672	
Protective Coat		Sq. Yd.	861	
Reinforcement Bars, Epoxy Coated		Pound	61,010	
Bar Splicers		Each	587	

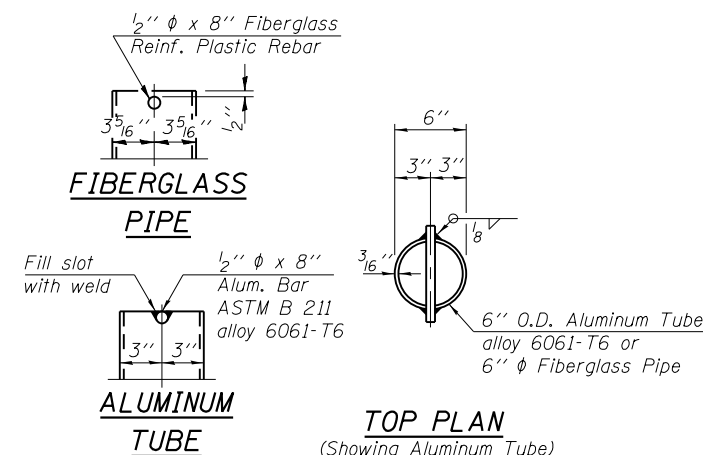
Bars indicated thus 1 x 2-#8 etc. indicates 1 line of bars with 2 lengths per line.

SECTION THRU PARAPET



SECTION A-A
*Dimension as required by Pipe Clamp

TOP PLAN



FIBERGLASS PIPE

ALUMINUM TUBE

TOP PLAN
(Showing Aluminum Tube)

BAR d(E)

BAR d1(E)

BAR v(E)

BAR s1(E)