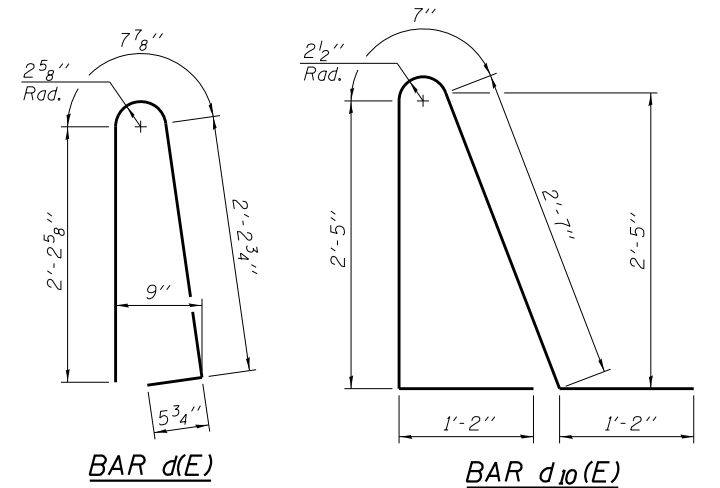
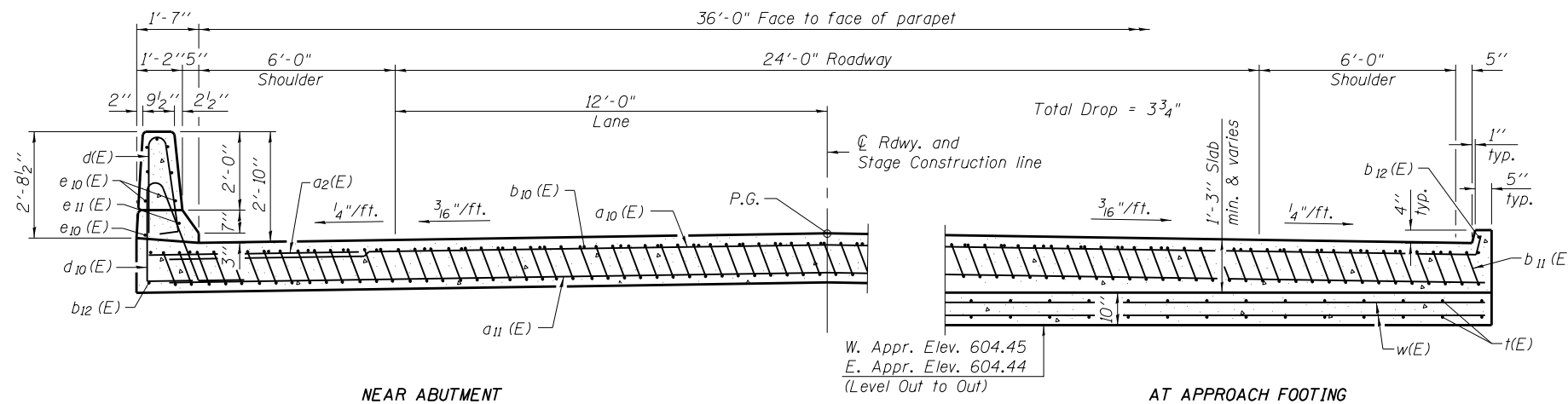


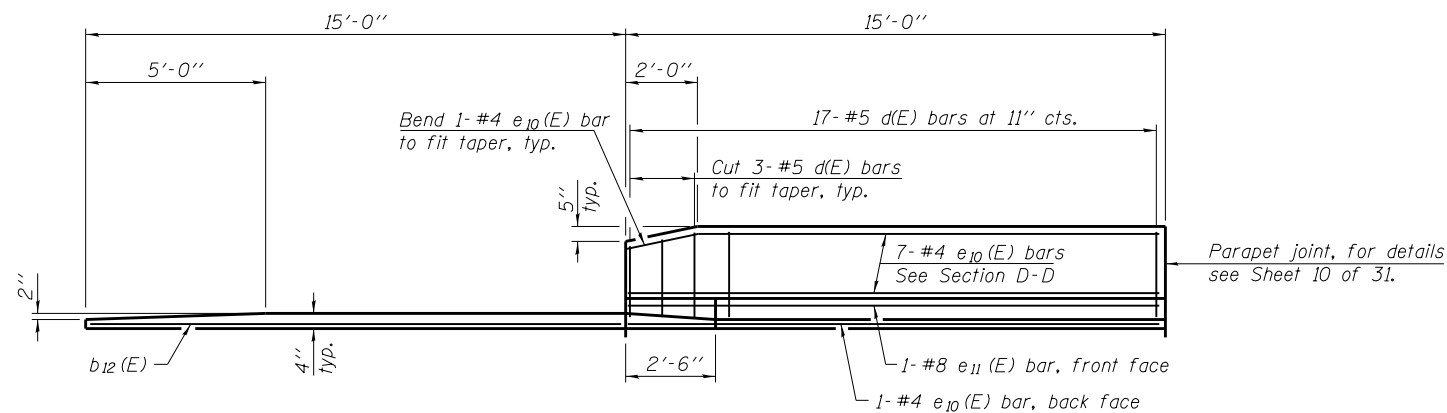
Notes:  
 See Sheet 12 of 31 for Detail A and View B-B.  
 Approach slab and parapet concrete shall be paid for as Concrete Superstructure.  
 Approach footing concrete shall be paid for as Concrete Structures.  
 Reinforcement shall be paid for as Reinforcement Bars, Epoxy Coated.  
 For v(E) bar details, see Sheet 10 of 31.  
 For bar splicer details, see Sheet 20 of 31.  
 Cost of excavation for approach footing included with Concrete Structures.  
 For Granular Backfill for Structures and drainage treatment details, see Sheet 2 of 31.  
 For additional parapet details, see Sheet 10 of 31.



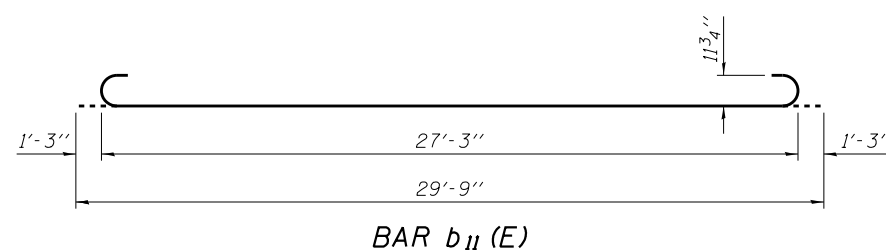
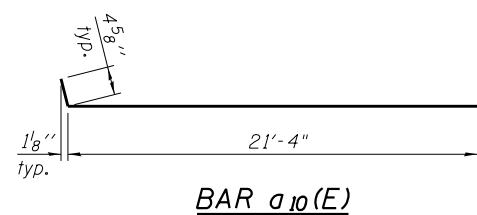
\* Tilt #9 b<sub>11</sub>(E) bars as required to maintain clearance.  
 \*\*\* Cost included with Concrete Superstructure.



SECTION D-D  
 (See Plan for dimensions not shown)



VIEW E-E



TWO APPROACHES  
 BILL OF MATERIAL

Bar	No.	Size	Length	Shape
a <sub>2</sub> (E)	48	#6	6'-6"	—
a <sub>10</sub> (E)	100	#4	21'-9"	—
a <sub>11</sub> (E)	184	#5	21'-6"	—
b <sub>10</sub> (E)	60	#4	29'-8"	—
b <sub>11</sub> (E)	180	#9	29'-9"	—
b <sub>12</sub> (E)	8	#4	14'-8"	—
d(E)	68	#5	5'-7"	—
d <sub>10</sub> (E)	68	#5	7'-11"	—
e <sub>10</sub> (E)	32	#4	14'-8"	—
e <sub>11</sub> (E)	4	#8	14'-8"	—
t(E)	160	#4	11'-2"	—
w(E)	160	#5	21'-6"	—
Concrete Structures		Cu. Yd.	27.0	
Concrete Superstructure		Cu. Yd.	118.0	
Bridge Deck Grooving		Sq. Yd.	230	
Protective Coat		Sq. Yd.	271	
Reinforcement Bars, Epoxy Coated		Pound	31,740	
Bar Splicers		Each	222	

(Sheet 2 of 2)