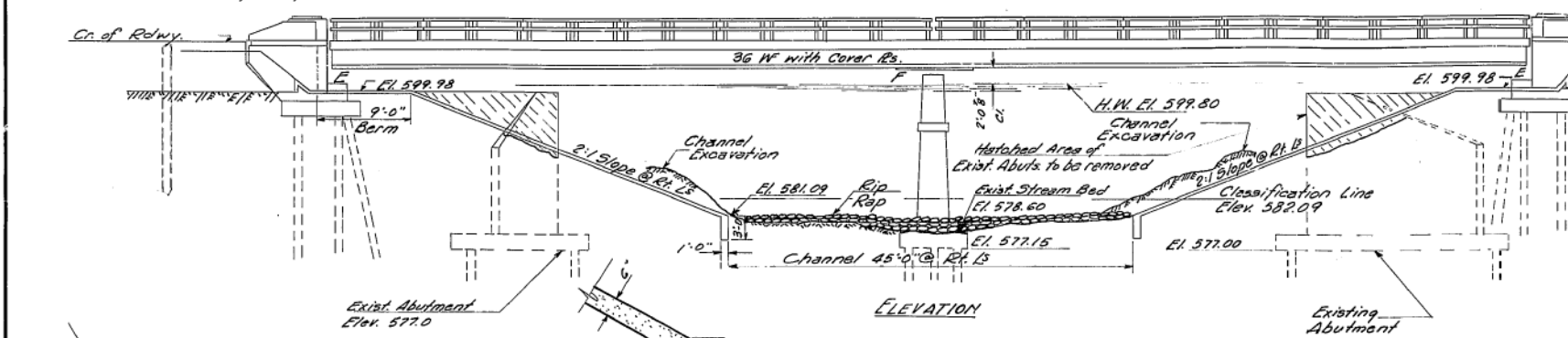


STATE OF ILLINOIS  
DEPARTMENT OF PUBLIC WORKS & BUILDINGS  
DIVISION OF HIGHWAYS

ROUTE NO.	SECTION	COUNTY	TOTAL SHEETS	SHEET NO.
S.A. 48	136 BR	Christian	26	6

8 SHEETS

B.N. #3 Cut in S.W. Wingwall Weibach R.R. Bridge 66' Rt. Sta. 626.90 Elev. 599.72  
Existing Structure: R.C. Girder 2 Spans @ 40' on R.C. Pier & Abutments on Piles.  
Entire Superstructure and part of abutments to be removed. Existing pier shall remain in place.  
Use part of old structure to rip-rap around pier as directed by the Engineer.  
Channel excavation by Bridge Contractor, to Elev. 581.0 within R.O.W. limits.

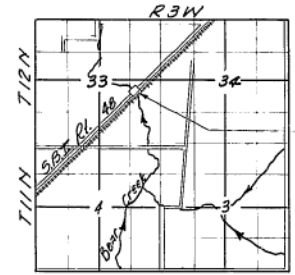
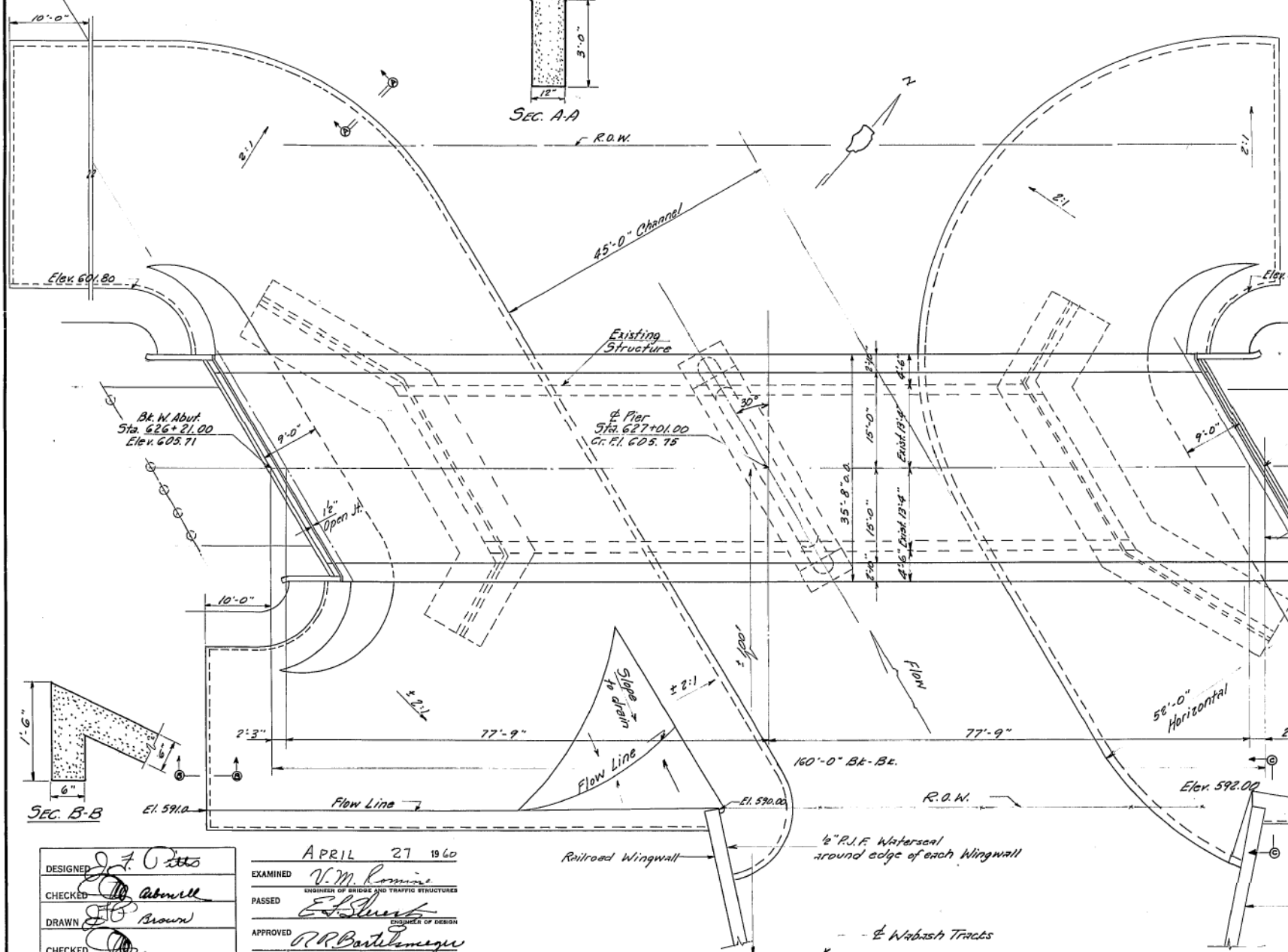


APPROACH PILE DATA  
Type: Creosoted  
Capacity 15 Tons  
No. Req'd. 14  
Est. Length 20 Ft.

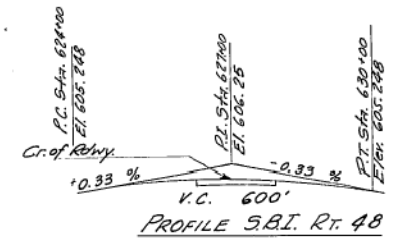
**WATERWAY INFORMATION**

Drainage Area	28,800 Acres = 45.0 <sup>sq</sup> Mi.
Character	Level, Rolling, Cultivated
Required Opening	30 Yr. Av. 1400 Sq. Ft.
Present opening	925 Sq. Ft.
Proposed opening	1444 Sq. Ft.

**GENERAL NOTES**  
Class X Concrete shall be used throughout except in endposts and pier.  
Class A Concrete shall be used in the pier.  
Handrail Concrete shall be used in the end posts.  
Sloped wall shall be reinforced with welded wire fabric 6"x6" mesh, #4 wires, weighing 58# per sq. ft.  
Layout of sloped walls may be varied to suit ground conditions in the field as directed by the engineer.  
Rivets 3/4" open holes, 1/2" unless noted.  
Railings shall be adjusted to true alignment after curbs have been poured.  
All rockers, bolsters, bearing plates, lead plates, pintles, and anchor bolts shall be fabricated and set in accordance with Article 31.15 of the Standard Specifications and are included in quantity of Structural Steel. Est. Wt. = 5070#  
Expansion guards are included in quantity of Structural Steel. Est. Wt. = 1770#  
Except as otherwise provided, all structural steel shall receive one shop coat of red lead paint and two field coats of aluminum paint.  
See Articles 56.1 to 56.5 inclusive of the Standard Specifications.  
All paint shall be furnished and applied by the contractor.  
The contractor shall drive 1" test pile in a permanent location at the West Abutment before ordering the remaining piles.  
All cover plates and beams to which cover plates are welded shall conform to the Specifications for Structural Steel for Welding ASTM designation A-373.



**DESIGN STRESSES**  
f<sub>c</sub> = 1400 psi. Super.  
v.c. = 75 psi. Figs.  
f<sub>s</sub> = 20,000 psi. Reinf.  
f<sub>s</sub> = 18,000 psi. Struat.  
n = 10  
Loading H20-S16-44  
\* Includes excavation for toe wall of slope wall



STATION 627+01  
BUILT 196 BY  
STATE OF ILLINOIS  
SBI 48 SEC. 136 BR  
FA PROJ. F-160 (18)  
LOADING H20-S16

NAME PLATE  
(See Std 213)

**TOTAL BILL OF MATERIAL**

ITEM	SUPER	SUB	TOTAL
Rem. Exist. Struct.	Each		1
Expansion Bolts 3/4"	Each	70	70
* Class A Exc. Struct.	Cu. Yds.		150
* Class B Exc. Struct.	Cu. Yds.		100
F & E Str. Steel	Lbs.	209,670	209,670
Handrail Concrete	Cu. Yds.	2.3	2.3
Class A Concrete	Cu. Yds.	45.4	45.4
Class X Concrete	Cu. Yds.	156.8	245.5
Reinforcement Bars Lbs.		6950	37,680
F & E Metal Handrail	Lin. Ft.	316	316
Fur. Untr. Pile up 30'	Lin. Ft.		96
Eur. Creos. Pile	4 x 20 Lb. Ft.		280
Drive Timber Pile	Lin. Ft.		376
Fur. Conc. Piles	Lin. Ft.		403
Test Pile Conc.	Each		1
Drive Conc. Pile	Lin. Ft.		403
Name Plates	Each		1
Temp. Bridge Complete	Each		1
Sloped Wall	Sq. Yds.		1990

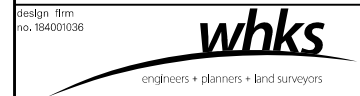
PROJ. F-160 (18)  
GENERAL PLAN & ELEVATION  
BEAR CREEK  
SBI Rt 48 Sec. 136-BR  
CHRISTIAN COUNTY  
STA. 627+01.00

DESIGNED: J. J. O'Neil  
CHECKED: J. J. O'Neil  
DRAWN: J. J. O'Neil  
CHECKED: J. J. O'Neil

APRIL 27 1960  
EXAMINED: V. M. Romine  
PASSED: E. J. Smith  
APPROVED: R. R. Bartelme  
CHIEF HIGHWAY ENGINEER

Rev. 8-31-60 Approach Piles Added.  
8-16-60 Removed from Elev. 580 Cu. Yds. Embankment and 650 Cu. Yds. Borrow Excavation from each Abut. - Total Bill of Material; removed Borrow Excavation, 1300 Cu. Yds. and Broken Concrete Rip-Rap - 190 Sq. Yds. *Rev. 5/16/62 Quantity of Reinf. Bars increased.*

FOR INFORMATION ONLY



USER NAME = OPERATOR	DESIGNED - TJZ	REVISED
FILE NAME = 0110514-72A61.dgn	CHECKED - CWC	REVISED
PLOT SCALE = 0:2.0000 1' = 1 in.	DRAWN - DLH	REVISED
PLOT DATE = 8/16/2013	CHECKED - TJZ	REVISED

STATE OF ILLINOIS  
DEPARTMENT OF TRANSPORTATION

EXISTING BRIDGE PLANS  
STRUCTURE NO. 011-0514  
SHEET NO. 26 OF 31 SHEETS

F.A.P. RTE.	SECTION	COUNTY	TOTAL SHEETS	SHEET NO.
	(41); 136B-1	CHRISTIAN	97	66
	75 (IL 27) & 714 (IL 48)	CONTRACT NO. 72A61		

ILLINOIS FED. AID PROJECT