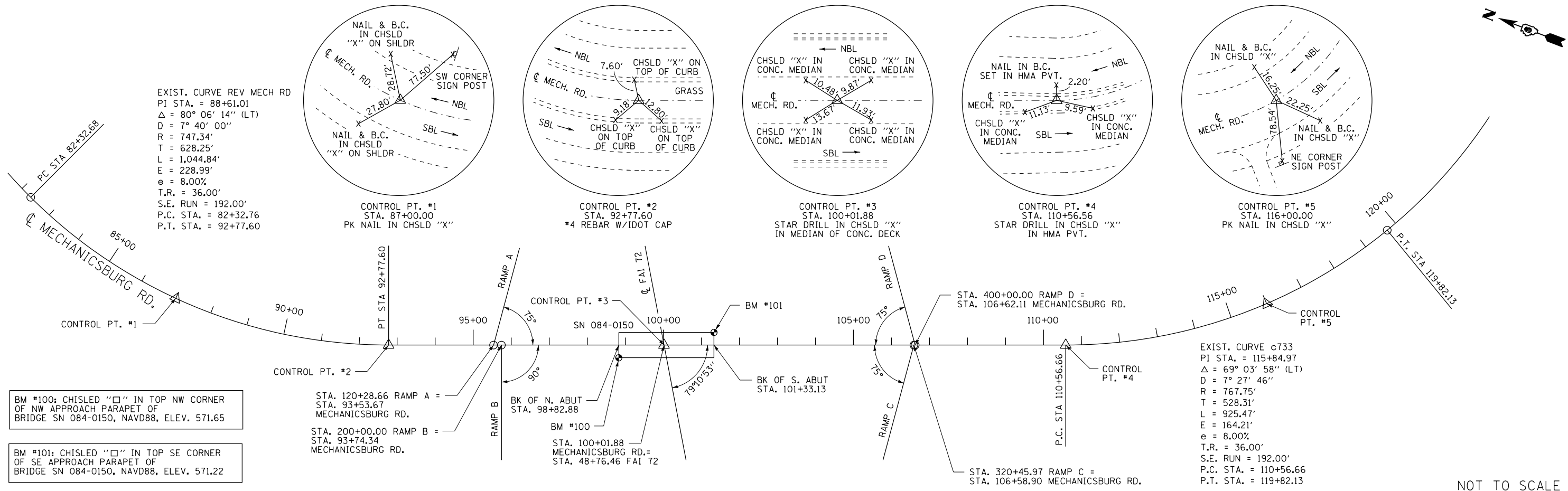
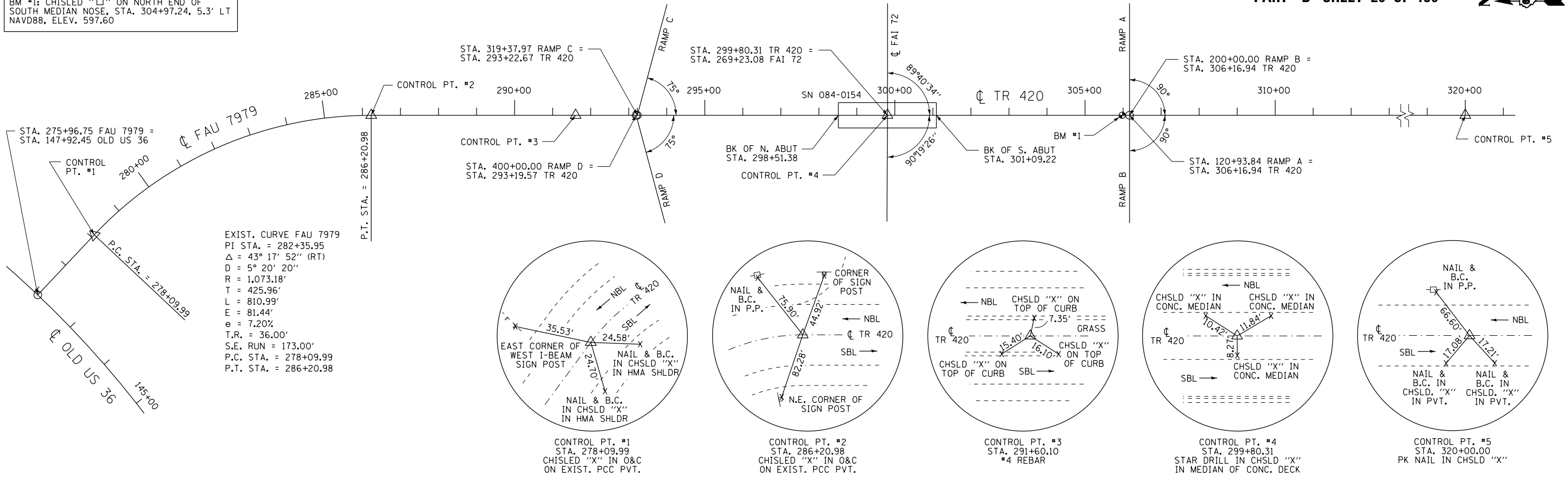




BM #1: CHISLED "□" ON NORTH END OF SOUTH MEDIAN NOSE, STA. 304+97.24, 5.3' LT NAVD88, ELEV. 597.60



BM #100: CHISLED "□" IN TOP NW CORNER OF SE APPROACH PARAPET OF BRIDGE SN 084-0150, NAVD88, ELEV. 571.65

BM #101: CHISLED "□" IN TOP SE CORNER OF SE APPROACH PARAPET OF BRIDGE SN 084-0150, NAVD88, ELEV. 571.22

STATE OF ILLINOIS
 DEPARTMENT OF TRANSPORTATION

ALIGNMENT, TIES, AND BENCHMARKS

USER NAME = sparksgw	DESIGNED - BTM	REVISED -
DRAWN - BTM	REVISIONS -	
PLOT SCALE = 40.0001' / in.	CHECKED - JSA	REVISIONS -
PLOT DATE = Sep-06-2013 09:11:49AM	DATE - 12/19/12	REVISIONS -

SCALE:	SHEET NO.	OF SHEETS	STA.	TO STA.
--------	-----------	-----------	------	---------

F.A.I. RTE.	SECTION	COUNTY	TOTAL SHEETS	SHEET NO.
1722	*	SANGAMON	194	84
*184-10-1RS-3,84-10-2RS-4IBR,1			CONTRACT NO. 72C90	
ILLINOIS FED. AID PROJECT				

NOT TO SCALE