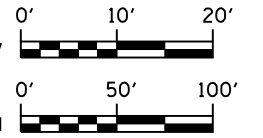
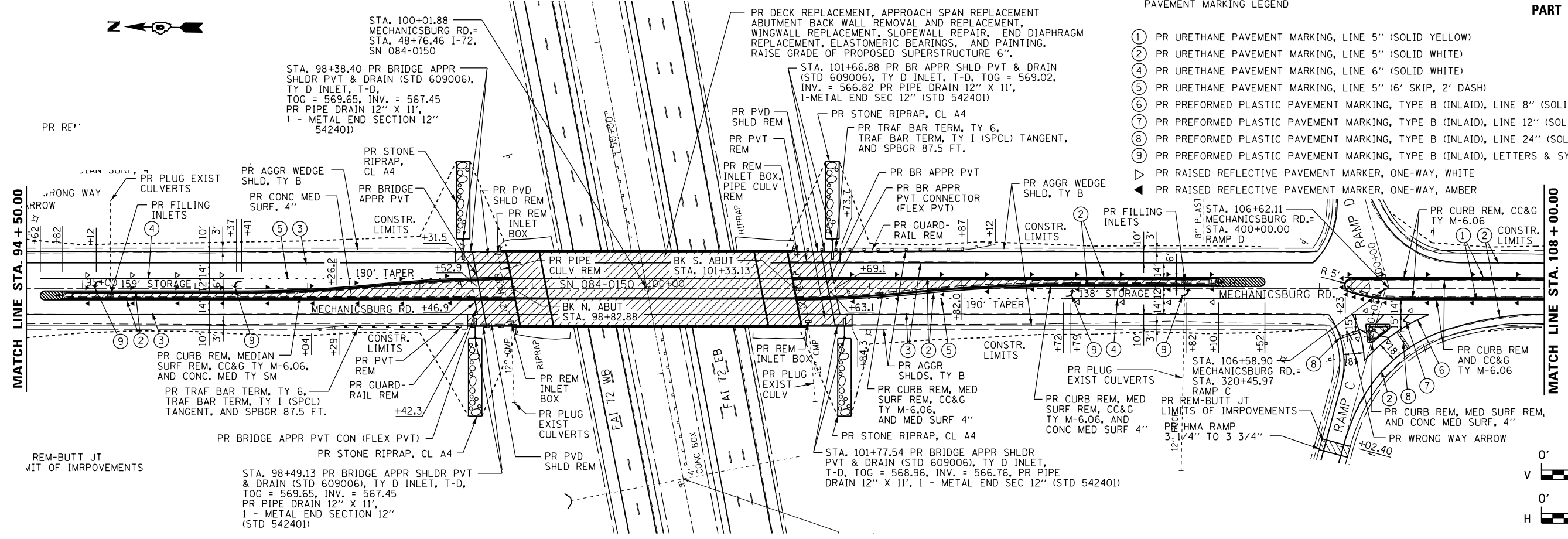


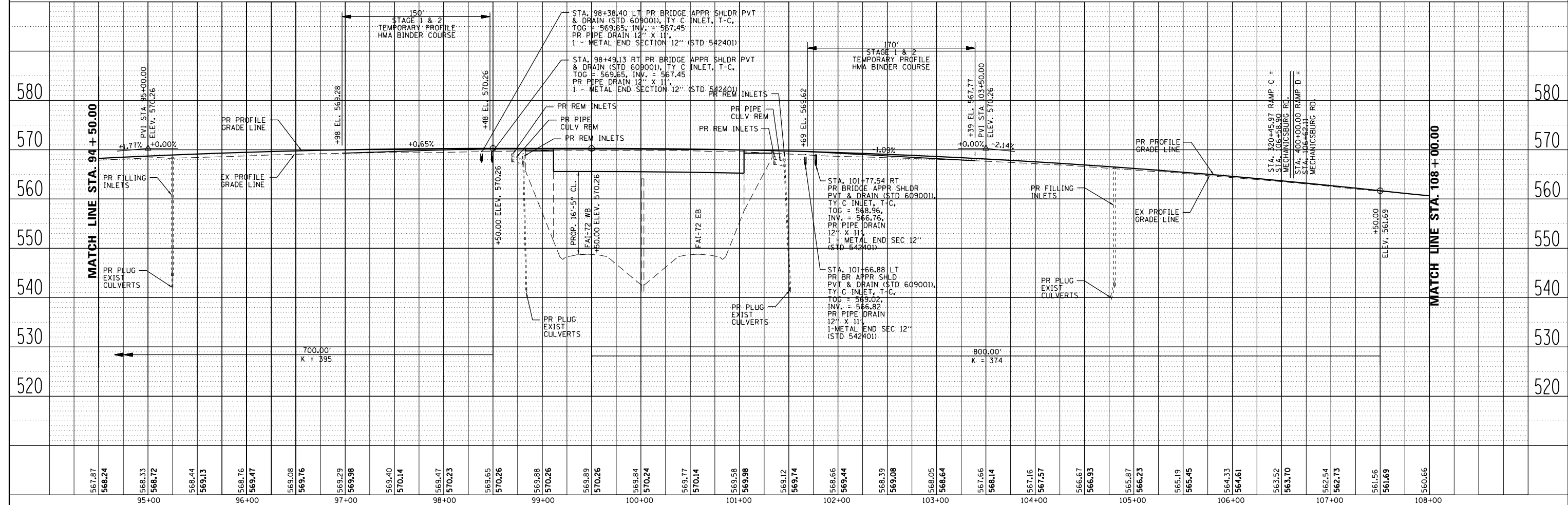
PAVEMENT MARKING LEGEND

- ① PR URETHANE PAVEMENT MARKING, LINE 5" (SOLID YELLOW)
- ② PR URETHANE PAVEMENT MARKING, LINE 5" (SOLID WHITE)
- ④ PR URETHANE PAVEMENT MARKING, LINE 6" (SOLID WHITE)
- ⑤ PR URETHANE PAVEMENT MARKING, LINE 5" (6' SKIP, 2' DASH)
- ⑥ PR PREFORMED PLASTIC PAVEMENT MARKING, TYPE B (INLAID), LINE 8" (SOLID WHITE)
- ⑦ PR PREFORMED PLASTIC PAVEMENT MARKING, TYPE B (INLAID), LINE 12" (SOLID WHITE)
- ⑧ PR PREFORMED PLASTIC PAVEMENT MARKING, TYPE B (INLAID), LINE 24" (SOLID WHITE)
- ⑨ PR PREFORMED PLASTIC PAVEMENT MARKING, TYPE B (INLAID), LETTERS & SYMBOLS (SOLID WHITE)
- ▽ PR RAISED REFLECTIVE PAVEMENT MARKER, ONE-WAY, WHITE
- ▲ PR RAISED REFLECTIVE PAVEMENT MARKER, ONE-WAY, AMBER



DATE	
BY	
PLAN	
NO.	
NO.	
NO.	
NO.	
NO.	

DATE	
BY	
PROFILE	
NO.	
NO.	
NO.	
NO.	
NO.	



567.87	568.24	568.33	568.72	568.44	569.13	568.76	569.47	569.08	569.76	569.29	569.98	569.40	570.14	569.47	570.23	569.65	570.26	569.88	570.26	569.89	570.26	569.84	570.24	569.77	570.14	569.58	569.98	569.12	569.74	568.66	569.44	568.39	569.08	568.05	568.64	567.66	568.14	567.16	567.57	566.67	566.93	565.87	566.23	565.19	565.45	564.33	564.61	563.52	563.70	562.54	562.73	561.56	561.69	560.66
95+00	96+00	97+00	98+00	99+00	100+00	101+00	102+00	103+00	104+00	105+00	106+00	107+00	108+00																																									

STATE OF ILLINOIS
DEPARTMENT OF TRANSPORTATION

PLAN & PROFILE SHEETS
CH 12 (MECHANICSBURG RD.)

F.A.I. RTE.	SECTION	COUNTY	TOTAL SHEETS	SHEET NO.
I-72		SANGAMON	194	87
• (84-10-1RS-3,84-10-2RS-4)BR,1			CONTRACT NO. 72C90	
ILLINOIS FED. AID PROJECT				