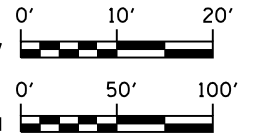
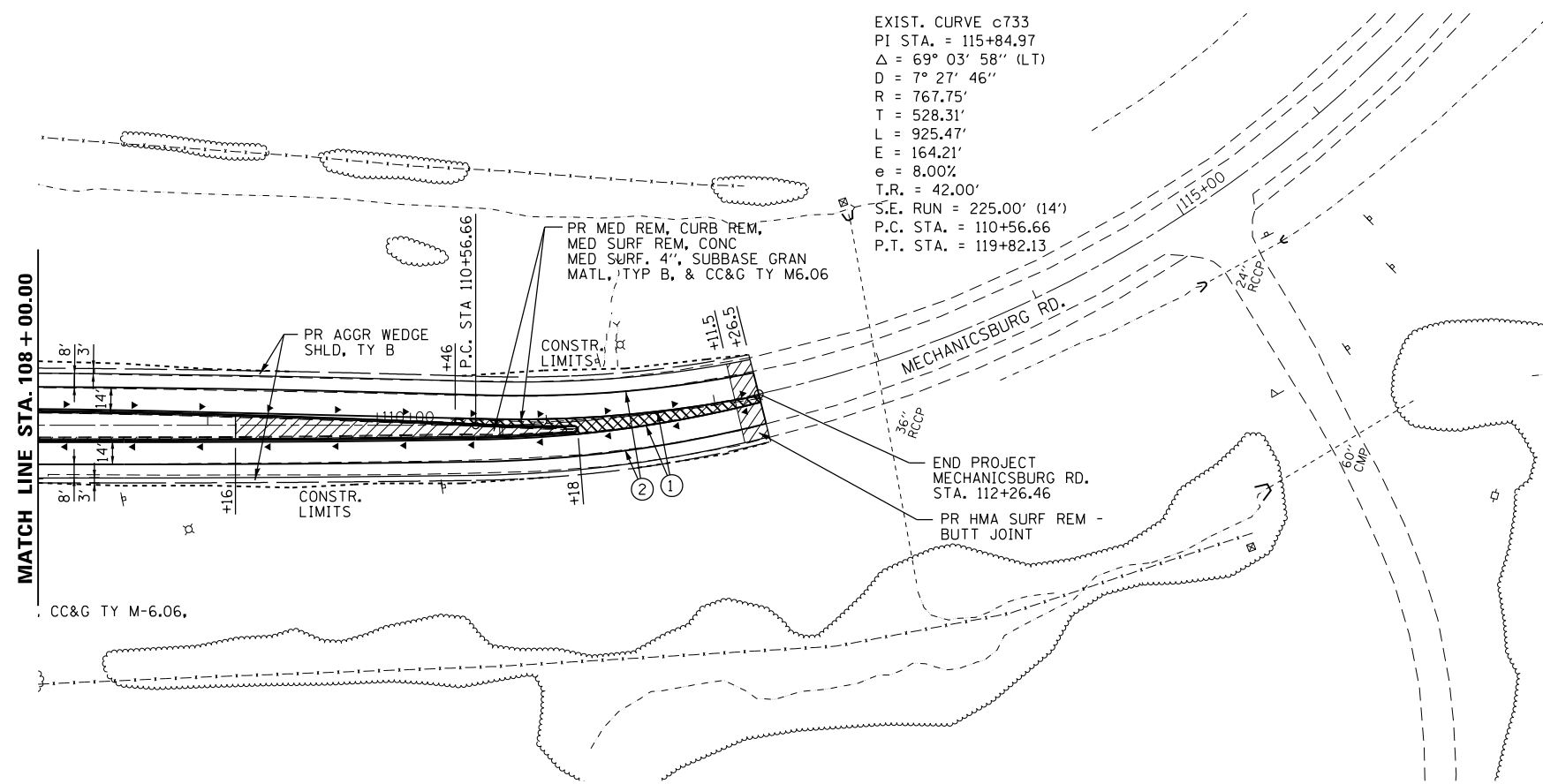




PAVEMENT MARKING LEGEND

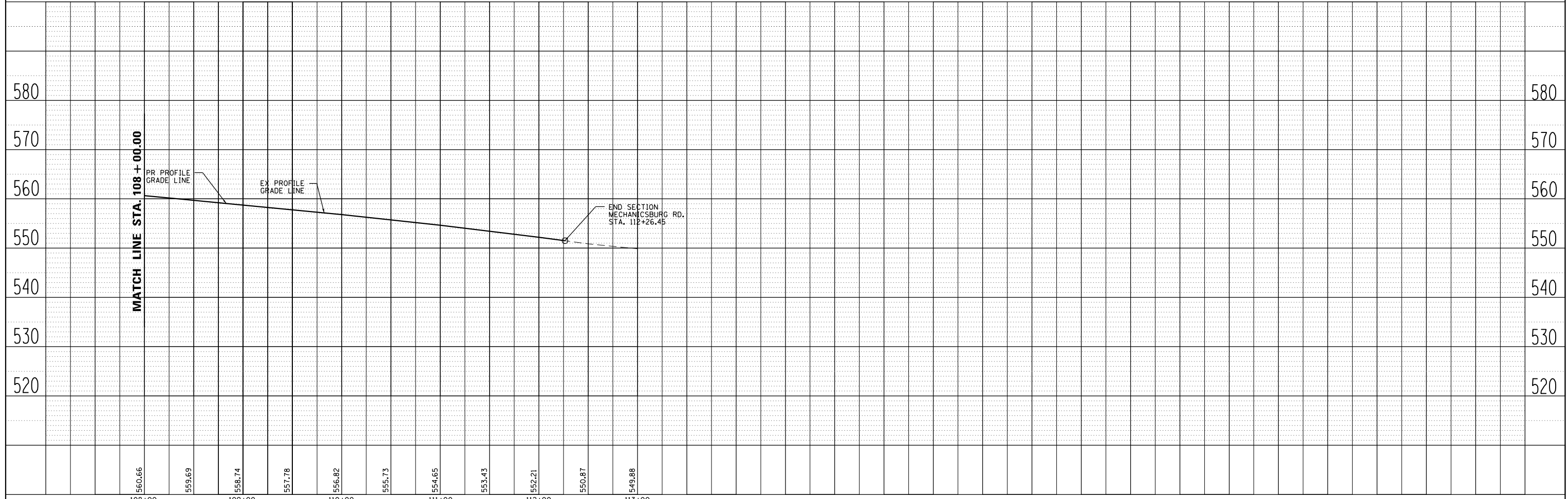
- ① PR URETHANE PAVEMENT MARKING, LINE 5" (SOLID YELLOW)
- ② PR URETHANE PAVEMENT MARKING, LINE 5" (SOLID WHITE)
- ④ PR URETHANE PAVEMENT MARKING, LINE 6" (SOLID WHITE)
- ⑤ PR URETHANE PAVEMENT MARKING, LINE 5" (6' SKIP, 2' DASH)
- ⑥ PR PREFORMED PLASTIC PAVEMENT MARKING, TYPE B (INLAID), LINE 8" (SOLID WHITE)
- ⑦ PR PREFORMED PLASTIC PAVEMENT MARKING, TYPE B (INLAID), LINE 12" (SOLID WHITE)
- ⑧ PR PREFORMED PLASTIC PAVEMENT MARKING, TYPE B (INLAID), LINE 24" (SOLID WHITE)
- ⑨ PR PREFORMED PLASTIC PAVEMENT MARKING, TYPE B (INLAID), LETTERS & SYMBOLS (SOLID WHITE)
- ▽ PR RAISED REFLECTIVE PAVEMENT MARKER, ONE-WAY, WHITE
- ◀ PR RAISED REFLECTIVE PAVEMENT MARKER, ONE-WAY, AMBER

EXIST. CURVE c733
 PI STA. = 115+84.97
 $\Delta = 69^\circ 03' 58''$ (LT)
 $D = 7^\circ 27' 46''$
 $R = 767.75'$
 $T = 528.31'$
 $L = 925.47'$
 $E = 164.21'$
 $e = 8.00\%$
 $T.R. = 42.00'$
 $S.E. RUN = 225.00' (14')$
 $P.C. STA. = 110+56.66$
 $P.T. STA. = 119+82.13$



PLAN	SURVEYED	BY	DATE
	PLOTTED		
	ALIGNED		
	CHECKED		
	FILED		
	NO.		

PROFILE	SURVEYED	BY	DATE
	PLOTTED		
	GRADES CHECKED		
	STRUCTURE NOTATIONS CHECKED		
	NO.		



108+00	109+00	110+00	111+00	112+00	113+00
560.66	559.69	558.74	557.78	556.82	555.73
554.65	553.43	552.21	550.87	549.88	

STATE OF ILLINOIS
 DEPARTMENT OF TRANSPORTATION

PLAN & PROFILE SHEETS
 CH 12 (MECHANICSBURG RD.)

F.A.I. RTE.	SECTION	COUNTY	TOTAL SHEETS	SHEET NO.
I-72		SANGAMON	194	88
• (84-10-1RS-3,84-10-2RS-4)BR,1		CONTRACT NO. 72C90		
ILLINOIS FED. AID PROJECT				

SCALE: SHEET NO. OF SHEETS STA. 108+00.00 TO STA. 112+26.46