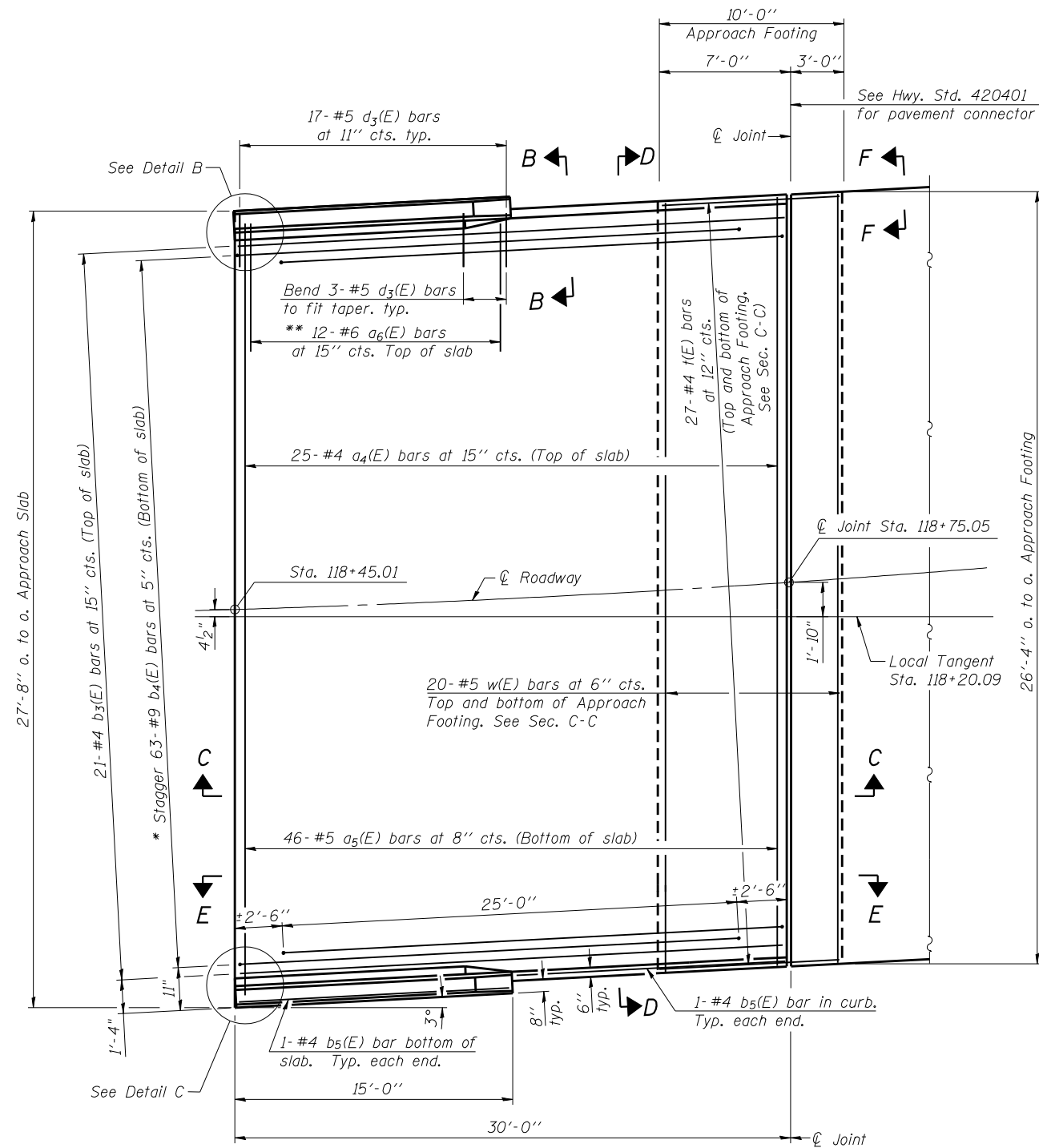


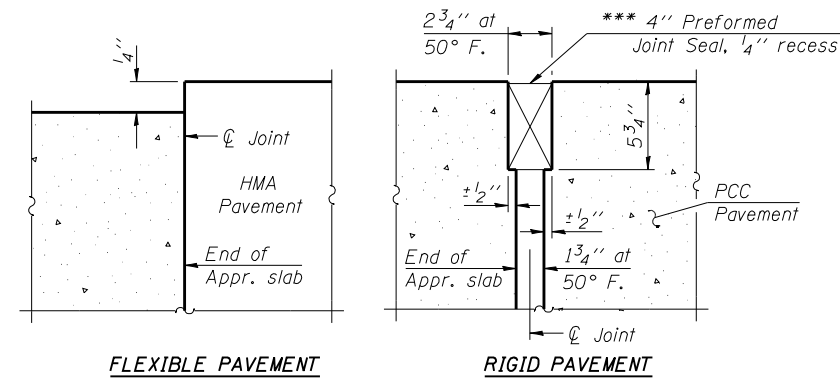
Notes:
 See sheet 12 of 24 for Sections C-C & D-D and View E-E.
 $a_4(E)$ and $a_5(E)$ bar spacings measured along local tangent.
 See sheet 9 of 24 for View B-B showing the deck notch below the parapet.



PLAN

* Tilt #9 $b_4(E)$ bars as required to maintain clearance.
 ** Space between $a_4(E)$ bars, typ. ea. parapet.

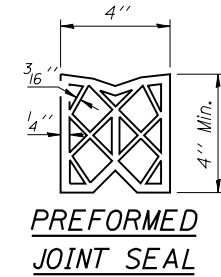
*** Cost included with Concrete Superstructure.



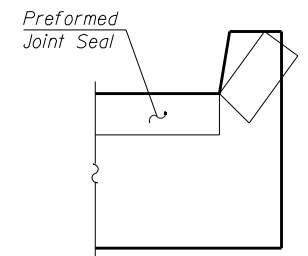
FLEXIBLE PAVEMENT

RIGID PAVEMENT

DETAIL A

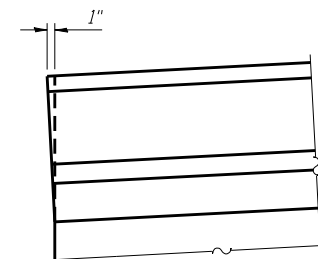


PREFORMED JOINT SEAL

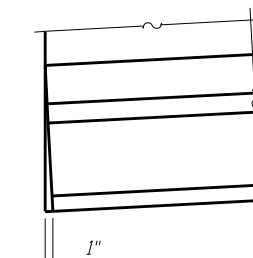


VIEW F-F

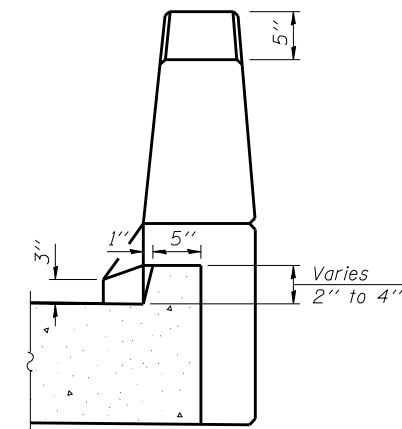
Angle Preformed Joint Seal at 45° at curbs when req'd for drainage.



DETAIL B



DETAIL C



VIEW B-B

STATE OF ILLINOIS
 DEPARTMENT OF TRANSPORTATION

NORTH APPROACH SLAB DETAILS
 STRUCTURE NO. 093-0024

SHEET NO. 11 OF 24 SHEETS

F.A. RTE.	SECTION	COUNTY	TOTAL SHEETS	SHEET NO.
IB	(12A)B-1	WABASH	52	33
CONTRACT NO. 74217				

ILLINOIS FED. AID PROJECT

FILE NAME = 74217-011-093-0024-slab-r.dgn
 CB PROJECT NO. 00853-5

Coombe-Bloxdorf P.C.
 CIVIL ENGINEERS-
 STRUCTURAL ENGINEERS-
 LAND SURVEYORS
 Design Firm License No. 184-002703

USER NAME = .CFC.	DESIGNED - GB/MCB	REVISED -
PLOT SCALE = 0.166667' / IN.	CHECKED - MCB	REVISED -
PLOT DATE = 7/23/2013	DRAWN - TFG	REVISED -
	CHECKED - MCB	REVISED -