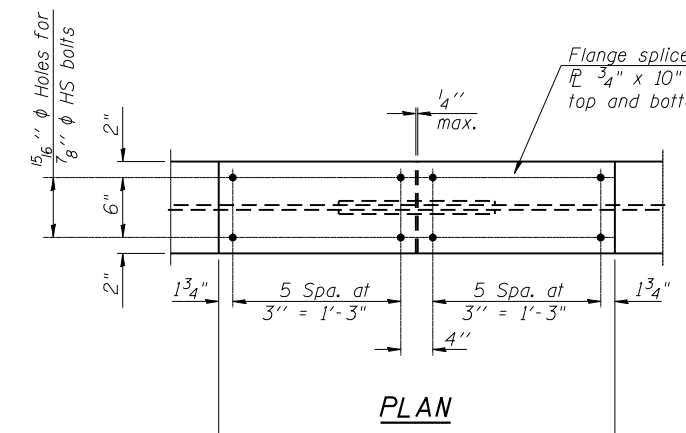
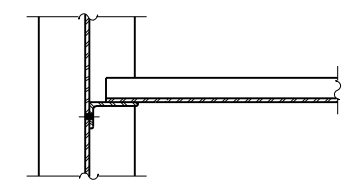


FRAMING PLAN

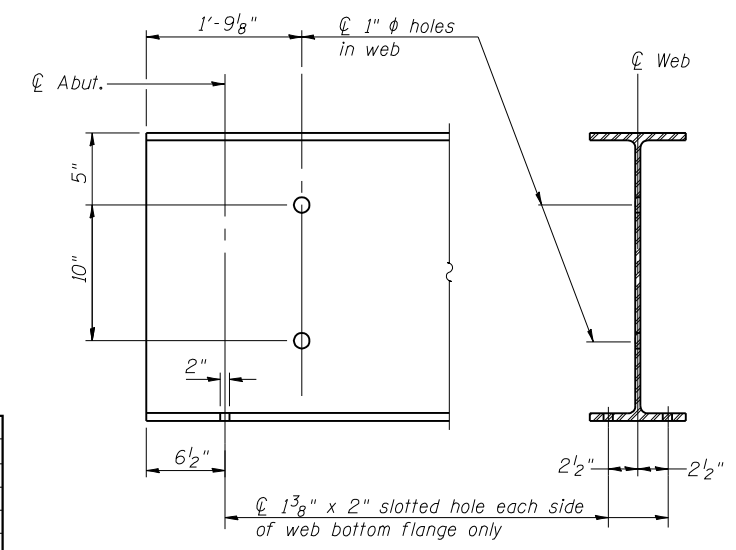


PLAN



SECTION B-B

Notes:
 All beams and splice material shall be M270 Grade 50.
 All cross frames or diaphragms shall be installed as steel is erected and secured with erection pins and bolts except as otherwise noted. Individual cross frames or diaphragms at supports may be temporarily disconnected to install bearing anchor rods.
 Load carrying components designated "NTR" shall conform to the Impact Testing Requirement, Zone 2.
 See Sheet 14 of 24 for Moment and Reaction Tables.

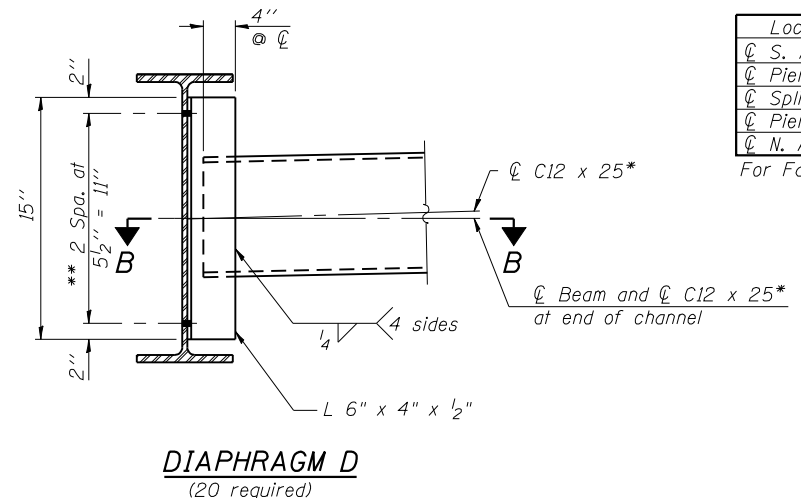


END OF BEAM DETAIL
(Showing required hole locations)

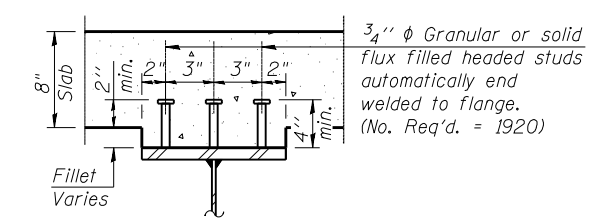
TOP OF BEAM ELEVATIONS

Location	Beam 1	Beam 2	Beam 3	Beam 4	Beam 5
☉ S. Abutment	403.86	403.97	404.07	404.18	404.29
☉ Pier 1	403.74	403.93	404.12	404.30	404.49
☉ Splice	403.65	403.90	404.15	404.40	404.65
☉ Pier 2	403.62	403.89	404.15	404.41	404.67
☉ N. Abutment	403.50	403.82	404.13	404.45	404.76

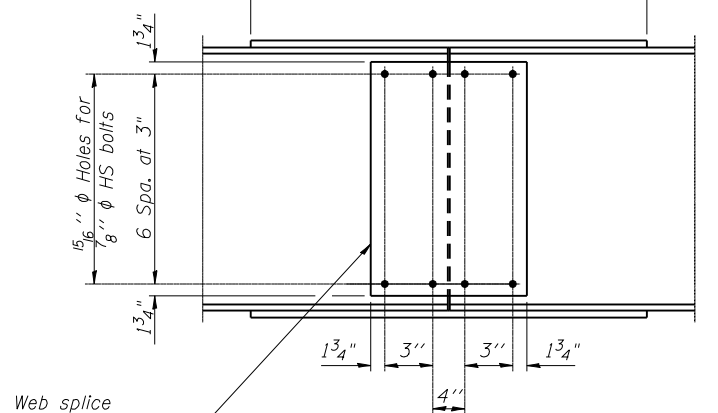
For Fabrication Only



DIAPHRAGM D
(20 required)



SECTION A-A



ELEVATION

SPLICE DETAIL
(5 Required)

Note:
 Two hardened washers required for each set of oversized holes.
 * Alternate C12x30 channels are permitted to facilitate material acquisition. Calculated weight of structural steel is based on the lighter section. The alternate, if utilized, shall be provided at no additional cost to the Department.
 ** 3/4" φ HS bolts, 1 5/16" φ holes

FILE NAME: 74217-013-Frame-plan.dgn
 CB PROJECT NO. 00853-5

Coombe-Bloxdorf P.C.
 CIVIL ENGINEERS-
 STRUCTURAL ENGINEERS-
 LAND SURVEYORS
 Design Firm License No. 184-002703

USER NAME = .CFC.	DESIGNED - GB/MCB	REVISED -
PLOT SCALE = 1000.000000 "/ IN.	CHECKED - MCB	REVISED -
PLOT DATE = 7/23/2013	DRAWN - TFG	REVISED -
	CHECKED - MCB	REVISED -

STATE OF ILLINOIS
DEPARTMENT OF TRANSPORTATION

STRUCTURAL STEEL DETAILS
STRUCTURE NO. 093-0024

SHEET NO. 13 OF 24 SHEETS

F.A. RTE.	SECTION	COUNTY	TOTAL SHEETS	SHEET NO.
1B	(12A)B-1	WABASH	52	35
CONTRACT NO. 74217				
ILLINOIS FED. AID PROJECT				