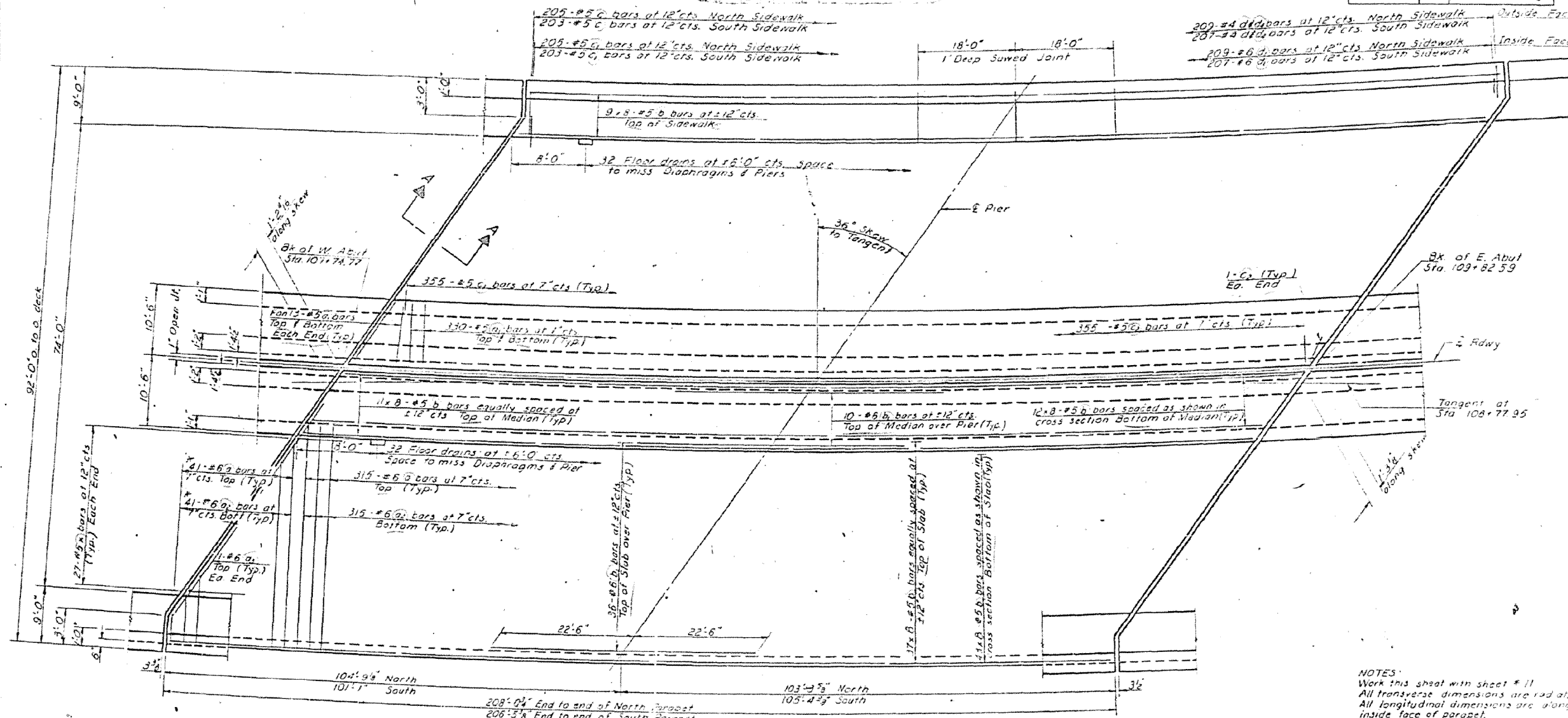


STATE OF ILLINOIS
DEPARTMENT OF TRANSPORTATION
DIVISION OF HIGHWAYS

| | | | | |
|-------------|---------|--------|--------------|-----------|
| PROJECT NO. | SECTION | COUNTY | TOTAL SHEETS | SHEET NO. |
| 17 | 116-1 | SHELBY | 80 | 36 |



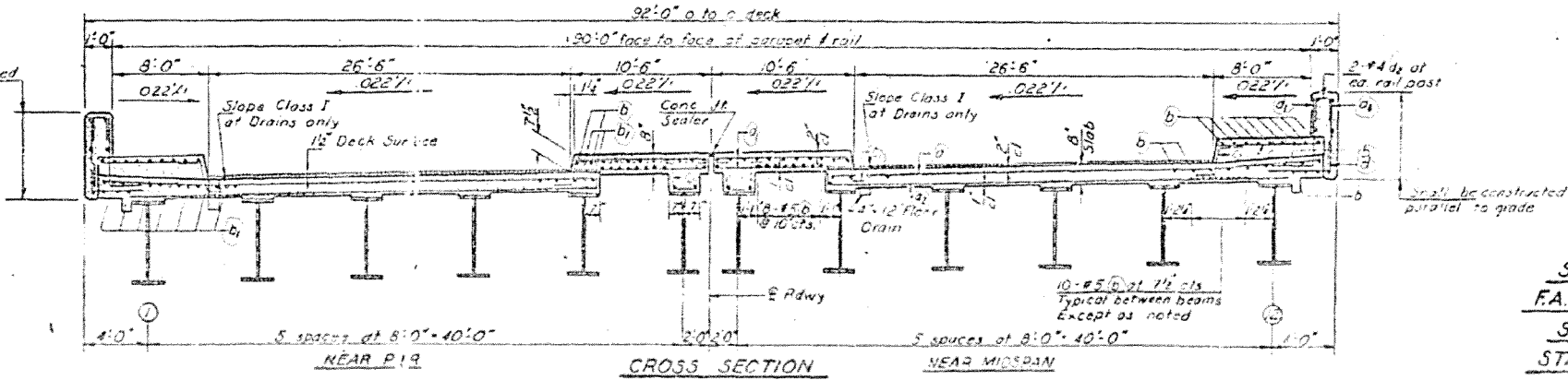
PLAN

NOTES:
Work this sheet with sheet # 11
All transverse dimensions are read at
All longitudinal dimensions are along
inside face of parapet.
Parapet shall be formed & poured in
separate operations.

* Order a # 6 bars full length -
Cut to fit skew and use remainder
of bars in opposite end.

| | |
|----------|-------------|
| DESIGNED | Steve Desai |
| CHECKED | J. Pence |
| DRAWN | R.P. Sumner |
| CHECKED | J.P. |

| | |
|----------|-------------|
| EXAMINED | [Signature] |
| PASSED | [Signature] |
| APPROVED | [Signature] |



CROSS SECTION
(Looking East)

MAIN SPANS
SUPERSTRUCTURE
F.A. RT. 17 SEC. 116-1
SHELBY COUNTY
STATION 108+77.95