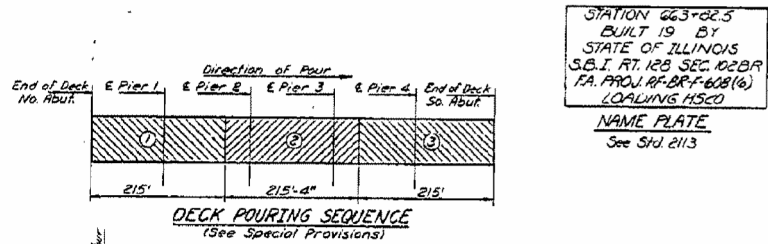
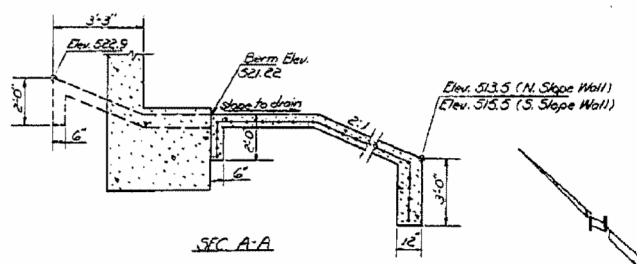
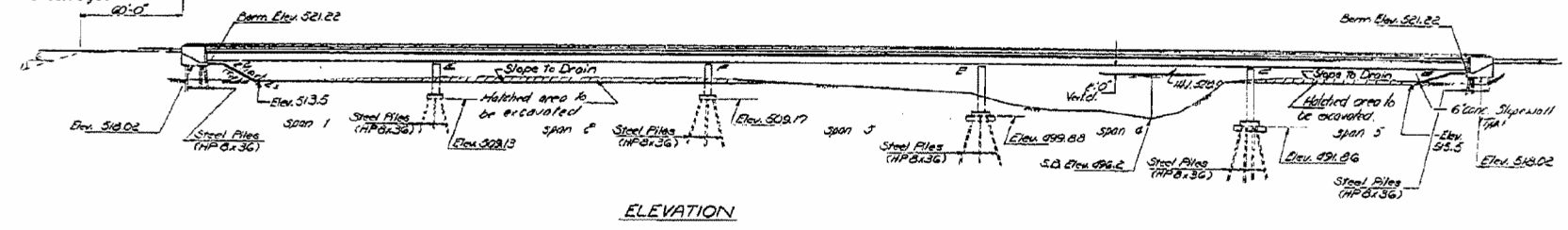


STATE OF ILLINOIS  
DEPARTMENT OF TRANSPORTATION

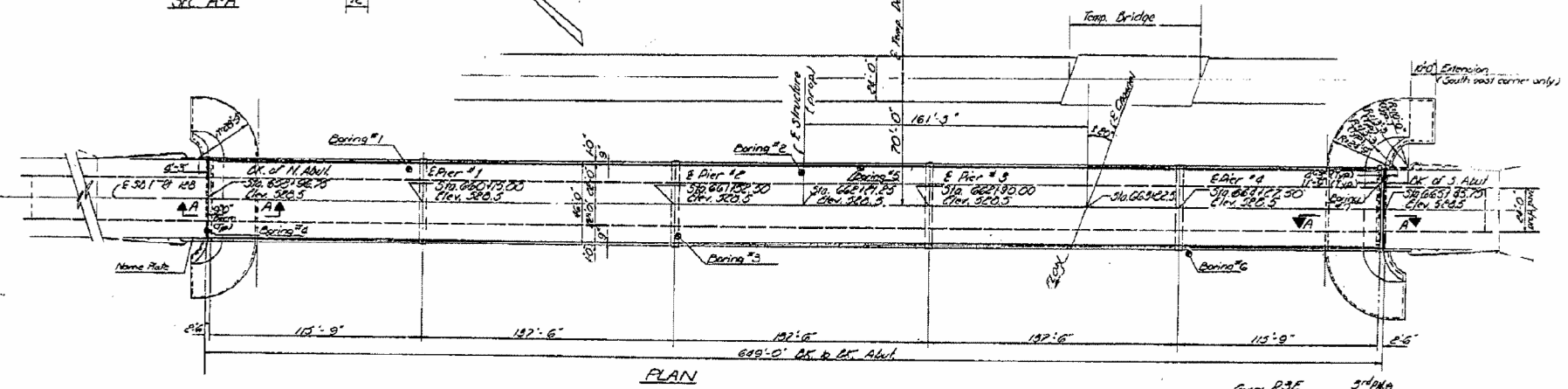
DATE	BY	NO.	DATE	BY	NO.
10/15/13	SHELDON	4	10		

SHEET NO. 1  
18 SHEETS

DN: #1 chiseled "D" Top Pier #1, North side of Exist. Bridge - 41' Sp. 862'53 - Elev. 521.22  
Existing Structure: Built as S.B.I. RT. 128 SEC. 102 BR. in 1930, of 34' 56" x 14' 5" Superstructure Plus 1' 4" for Appro. with 4" R.C. 24" deep 14" diameter piers. Existing structure to be removed by contractor after detour is completed. Recommended opening for detour structure: 1475 sq. ft. No Salvage.



STATION 663+02.5  
BUILT IN BY  
STATE OF ILLINOIS  
S.B.I. RT. 128 SEC. 102 BR.  
F.A. PROJ. RF-BR-F-608(6)  
LOADING H520  
NAME PLATE  
See Std. 2113



DESIGNED: Daniel Chelton  
CHECKED: Steve L. Jones  
DRAWN: J.R.S.  
CHECKED: S.C.

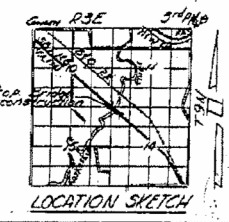
DESIGNED	Daniel Chelton
CHECKED	Steve L. Jones
DRAWN	J.R.S.
CHECKED	S.C.

EXAMINED: Stephen J. ...  
PASSED: ...  
APPROVED: ...

DESIGN STRESSES

f <sub>c</sub>	4000 psi. (Deck Slab)
f <sub>s</sub>	1400 psi. (Curb, parapet, Sub)
f <sub>s</sub>	20,000 psi. (Reinf.)
f <sub>s</sub>	20,000 psi. (Struct.)
f <sub>e</sub>	25 psi. (Figs.)
n	10

Allow 25% for future W.S.  
LOADING H5 20-44



GENERAL PLAN & ELEVATION  
F.A. PROJ. RF-BR-F-608(6)  
S.B.I. RT. 128 OVER KASKASKIA RIVER  
S.B.I. RT. 128 - SEC. 102 BR.  
SHELBY COUNTY  
STATION 663+02.5 & CHANNEL  
STATION 666+01.02 E STRUCTURE