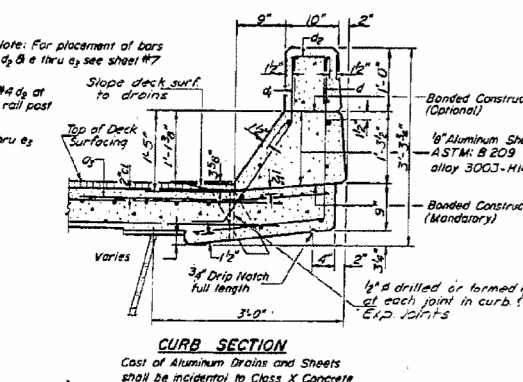
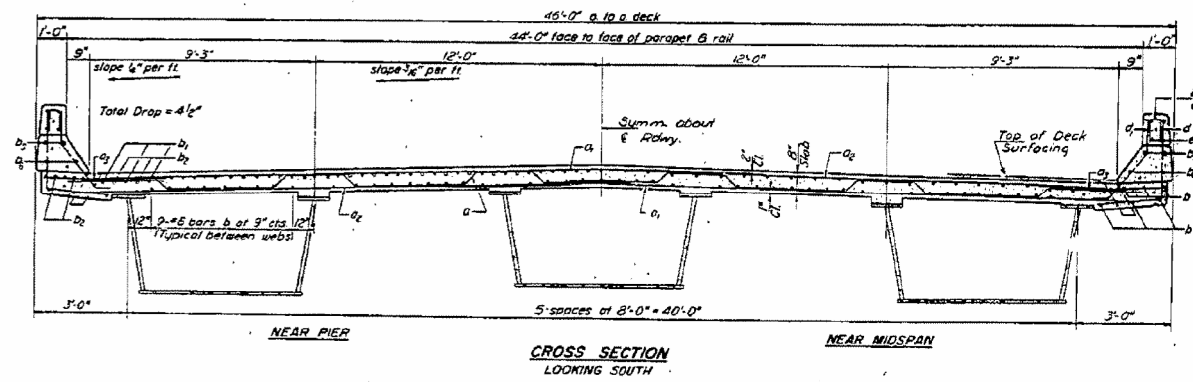
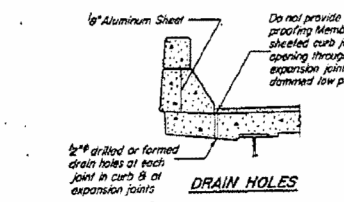
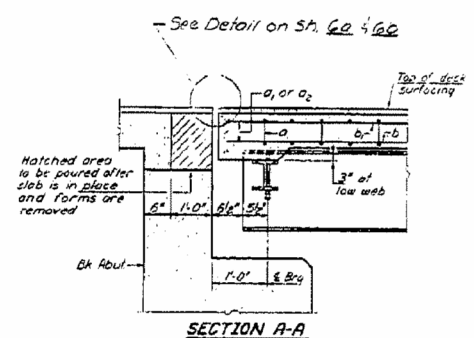
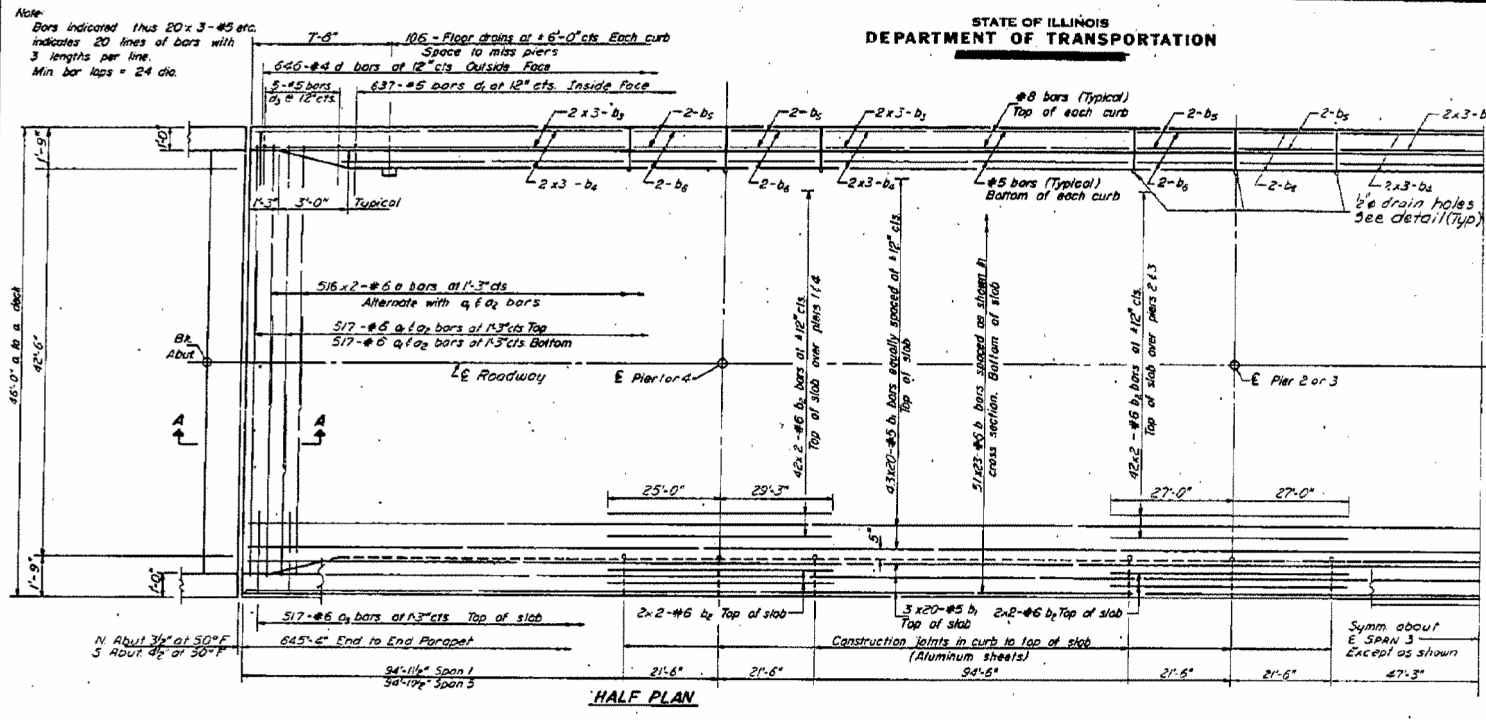


STATE OF ILLINOIS  
DEPARTMENT OF TRANSPORTATION

DESIGNED BY	DATE	SCALE	SHEET NO.
STEFFENK	10/5/82	AS SHOWN	18
CHECKED BY	DATE	SCALE	SHEET NO.
STEFFENK	10/5/82	AS SHOWN	18



**BILL OF MATERIAL**

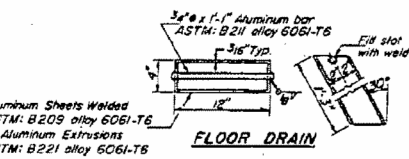
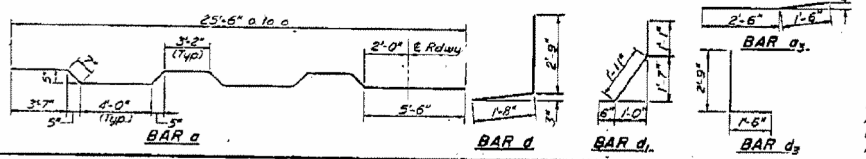
Bar No.	Size	Length	Shape
a	1032	#6	26'-4"
b	1034	#6	29'-6"
c	1034	#6	27'-6"
d	1034	#5	4'-0"
e	1173	#6	28'-8"
f	960	#5	33'-6"
g	368	#6	28'-0"
h	60	#8	32'-0"
i	60	#5	32'-6"
j	32	#8	27'-3"
k	32	#5	27'-3"
l	1292	#6	4'-5"
m	1274	#5	3'-5"
n	20	#5	4'-3"

Reinforcement Bars Pounds 245,330  
Class X Concrete Cu. Yd. 865.8

DESIGNED BY: *Steffenk*  
CHECKED BY: *Steffenk*  
DRAWN BY: *C.M.P.H.*  
CHECKED BY: *S.P.*

EXAMINED BY: *[Signature]*  
APPROVED BY: *[Signature]*  
DIRECTOR OF HIGHWAYS

I-4106-D 3-1-68, 12-3-69



**SUPERSTRUCTURE**  
S.B.I. RT. 128 - SEG. 102BR  
SHELBY COUNTY  
STA. 663+82.5