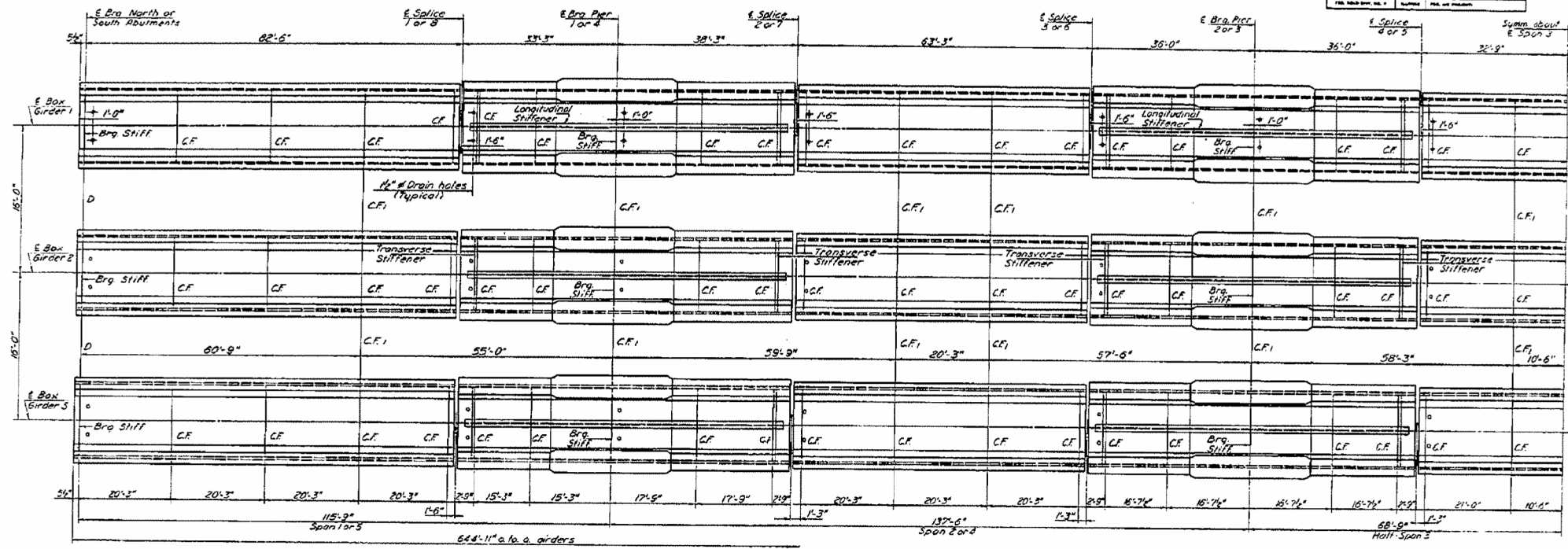
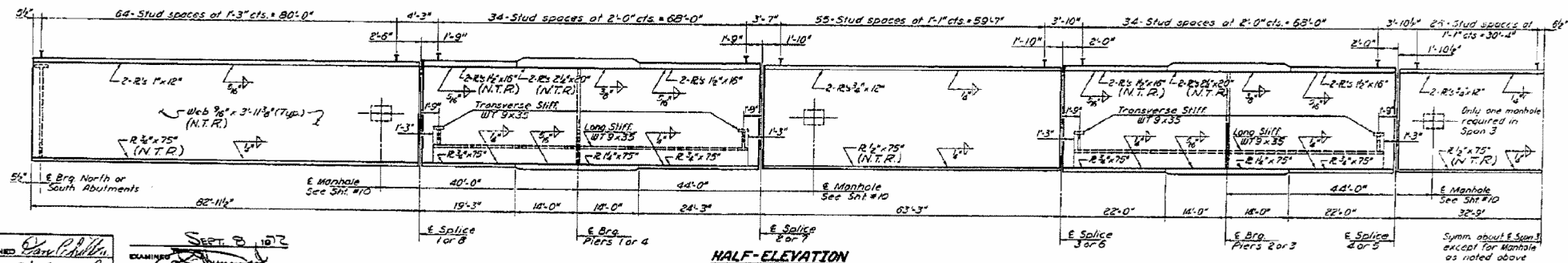


STATE OF ILLINOIS
DEPARTMENT OF TRANSPORTATION

DATE	DESIGNER	CHECKED	DRAWN	SCALE	SHEET NO.
10/27/13	IDE BR SHELBY	4-1	2-1	1/8"	18 SHEETS



HALF-PLAN



HALF-ELEVATION

DESIGNED	SEPT 8 2013
CHECKED	
DRAWN	
CHECKED	

Note: N.T.R. requires that the designated member conform to the Supplemental Requirements for Notch Toughness.

Note: See Sheets #10 & #11 for remainder of Structural Steel Details.

STRUCTURAL STEEL
S.B.I. RT 128 - SEC. 102 BR
SHELBY COUNTY
STA. 663+82.5