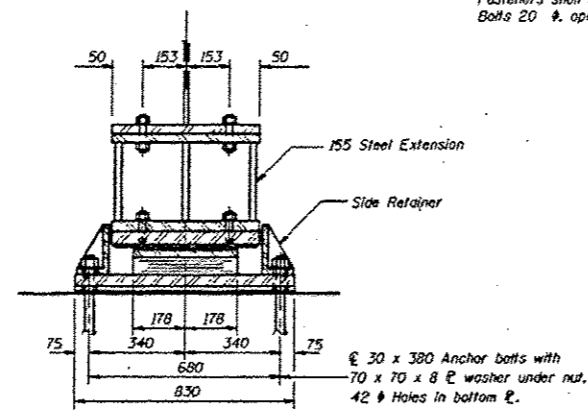
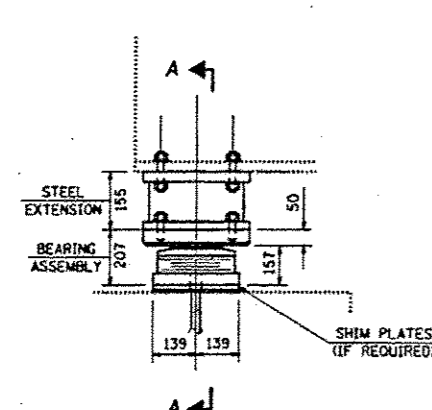


SOUTH ABUTMENT ELASTOMERIC BEARINGS

TYPE II 254 X 356

F.A. RTE.	SECTION	COUNTY	TOTAL SHEETS	SHEET NO.
774	101BR1	SHELBY	160	81

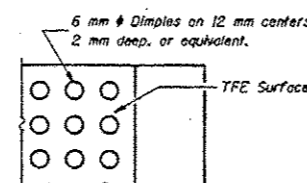
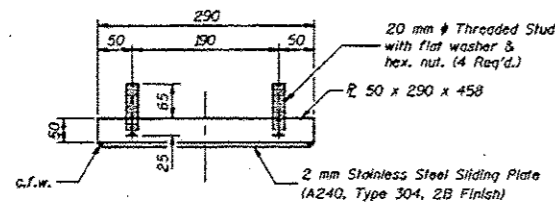
Fasteners shall be high strength bolts.
Bolts 20 ϕ , open holes 22 ϕ , unless otherwise noted.



ELEVATION AT ABUT.

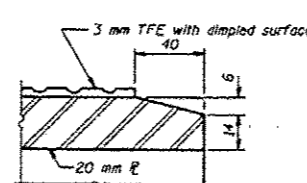
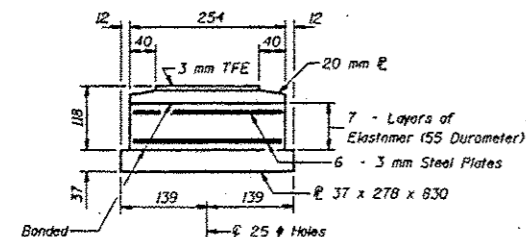
SECTION A-A

TYPE II TFE ELASTOMERIC EXP. BRG.



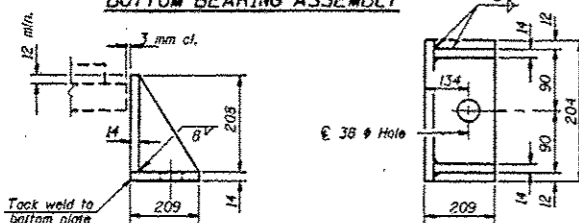
TOP BEARING ASSEMBLY

PLAN-TFE SURFACE

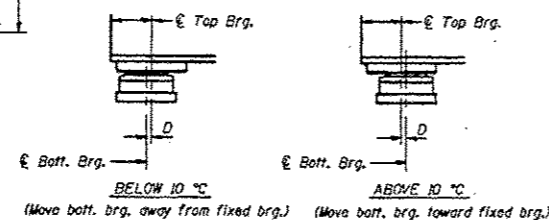


BOTTOM BEARING ASSEMBLY

SECTION THRU TFE



SIDE RETAINER
Equivalent raised angle with stiffeners will be allowed in lieu of welded plates. Weight included with structural steel.



SETTING ANCHOR BOLTS AT EXP. BRG.

D = 1 mm per each 10 m of expansion for every 8 $^{\circ}$ C temp.

ALL NEW STRUCTURAL STEEL SHALL CONFORM TO AASHTO CLASSIFICATION M-270 GR 250. FASTENERS SHALL BE HIGH STRENGTH BOLTS. BOLTS 20 mm ϕ , OPEN HOLES 22 mm ϕ UNLESS OTHERWISE NOTED.

THE FIRST TWO COATS OF THE LEAD AND CHROMATE FREE ALKYL PAINT SYSTEM SHALL BE USED FOR SHOP AND FIELD PAINTING OF THE NEW STRUCTURAL STEEL.

STRUCTURAL STEEL SHALL ONLY BE CLEANED AND PAINTED AS REQUIRED BY THE SPECIAL PROVISION.

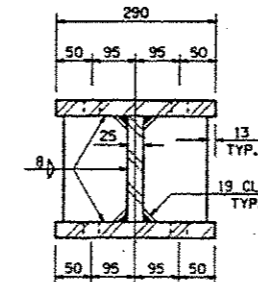
PRIOR TO ORDERING ANY MATERIAL, THE CONTRACTOR SHALL VERIFY IN THE FIELD ALL BEARING HEIGHT DIMENSIONS.

A MAXIMUM OF 4 BEAMS PER STAGE MAY BE MOVED AT ONE TIME.

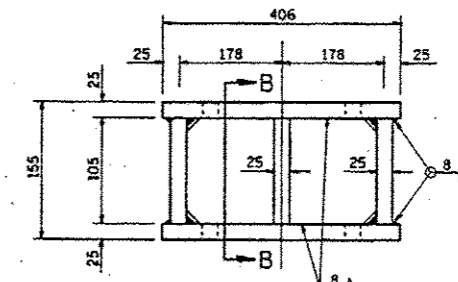
DIAPHRAGM REMOVAL AND REPLACEMENT MAY BE REQUIRED TO FACILITATE DRILLING HOLES IN BOTTOM FLANGE FOR BEARING ATTACHMENT. COST IS INCIDENTAL TO "FURNISHING AND ERECTING STRUCTURAL STEEL".

NEW STEEL EXTENSIONS, CONNECTION BOLTS AND ANCHOR BOLTS ARE INCLUDED IN "FURNISHING AND ERECTING STRUCTURAL STEEL".

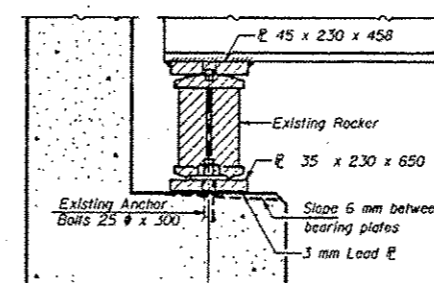
MINIMUM JACK CAPACITY = 520 kN.



SECTION B-B

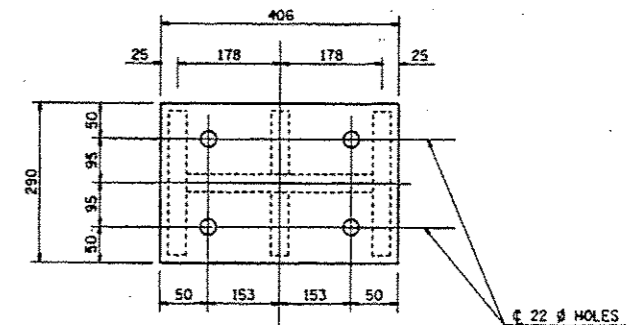


STEEL EXTENSION DETAIL



EXISTING BEARING REMOVAL DETAIL AT ABUTMENTS

BEFORE INSTALLING THE NEW BEARINGS, REMOVE THE TOP PLATE OF THE EXISTING BEARING ASSEMBLY FROM THE BOTTOM FLANGE USING THE AIR-ARC METHOD AND GRIND SMOOTH ALL WELD MATERIAL REMAINING ON THE BOTTOM FLANGE. BURN EXISTING ANCHOR BOLTS FLUSH WITH EXISTING CONCRETE SURFACE. GRIND EXISTING ANCHOR BOLT SMOOTH AND SEAL WITH EPOXY. COST IS INCIDENTAL TO "JACK AND REMOVE EXISTING BEARINGS".



PLAN TOP & BOTTOM PLATES

TWO 3 mm ADJUSTING SHIMS, OF THE DIMENSIONS OF THE BOTTOM BEARING PLATE SHALL BE PROVIDED FOR EACH BEARING.

BILL OF MATERIAL

Item	Unit	Total
Elastomeric Bearing Assembly Type II	Each	6
Furnishing & Erecting Structural Steel	kg	670
Jack and Remove Existing Bearings	Each	6

INTERIOR GIRDER REACTION TABLE

EXISTING BRIDGE PLANS
S.N. 087-0022

FILE NAME:	USER NAME: stafforank	DESIGNED -	REVISED -
alpw\work\pawdot\stafforank\10344954\1074620-shr-plan.dgn	74620-shr-plan.dgn	DRAWN -	REVISED -
Default	PLOT SCALE = 100.0000' / 1"	CHECKED -	REVISED -
	PLOT DATE = 8/6/2013	DATE -	REVISED -

STATE OF ILLINOIS
DEPARTMENT OF TRANSPORTATION

SCALE: N/A SHEET 9 OF 15 SHEETS STA. TO STA.

07 BRIDGE PAINTING 2014-2

F.A.P. RTE.	SECTION	COUNTY	TOTAL SHEETS	SHEET NO.
774		SHELBY	160	12 A
				CONTRACT NO. 74620
ILLINOIS FED. AID PROJECT				