

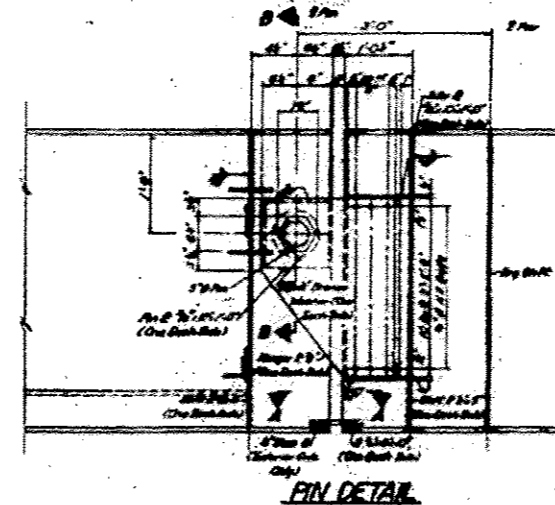
NOTES ON SETTING OF ANCHOR BOLTS AT EXP. BRGS.

C) D^a : Side of brg. away from fixed brg.
 $D^a = 1/8"$ per each 100' of expansion for every 15' fall below the normal temp. of 50°F.

D^{b*} : Side of brg. toward fixed brg.
 $D^{b*} = 1/8"$ per each 100' of expansion for every 15' rise above the normal temp. of 50°F.

D) After beams have been erected and dimensions D^a or D^{b*} determined, holes shall be drilled and anchor bolts shall be grouted in place. All fixed anchor bolts may be built into the masonry.

BEARING ASSEMBLY DETAILS



SHIM PLATES

Structure	Location	Size
E.B.	Abutment - Grade 3	5"
	Abutment - Grade 4	5"
	Pier 1 - Grade 3	5"
	Pier 2 - Grade 3	5"
	Pier 2 - Grade 4	5"
A.B.	Abutment - Grade 4	6"
	Pier 1 - Grade 4	5"

BEARING & FIN DETAILS
 FA-172 SEC. 58-66-HVS
 MACON COUNTY
 STA. 798+54.75 (FA-172)

REVISION KEY

I-2-B 8-1-65, 8-1-70
 Rev. 8-26-74 A.R.J.