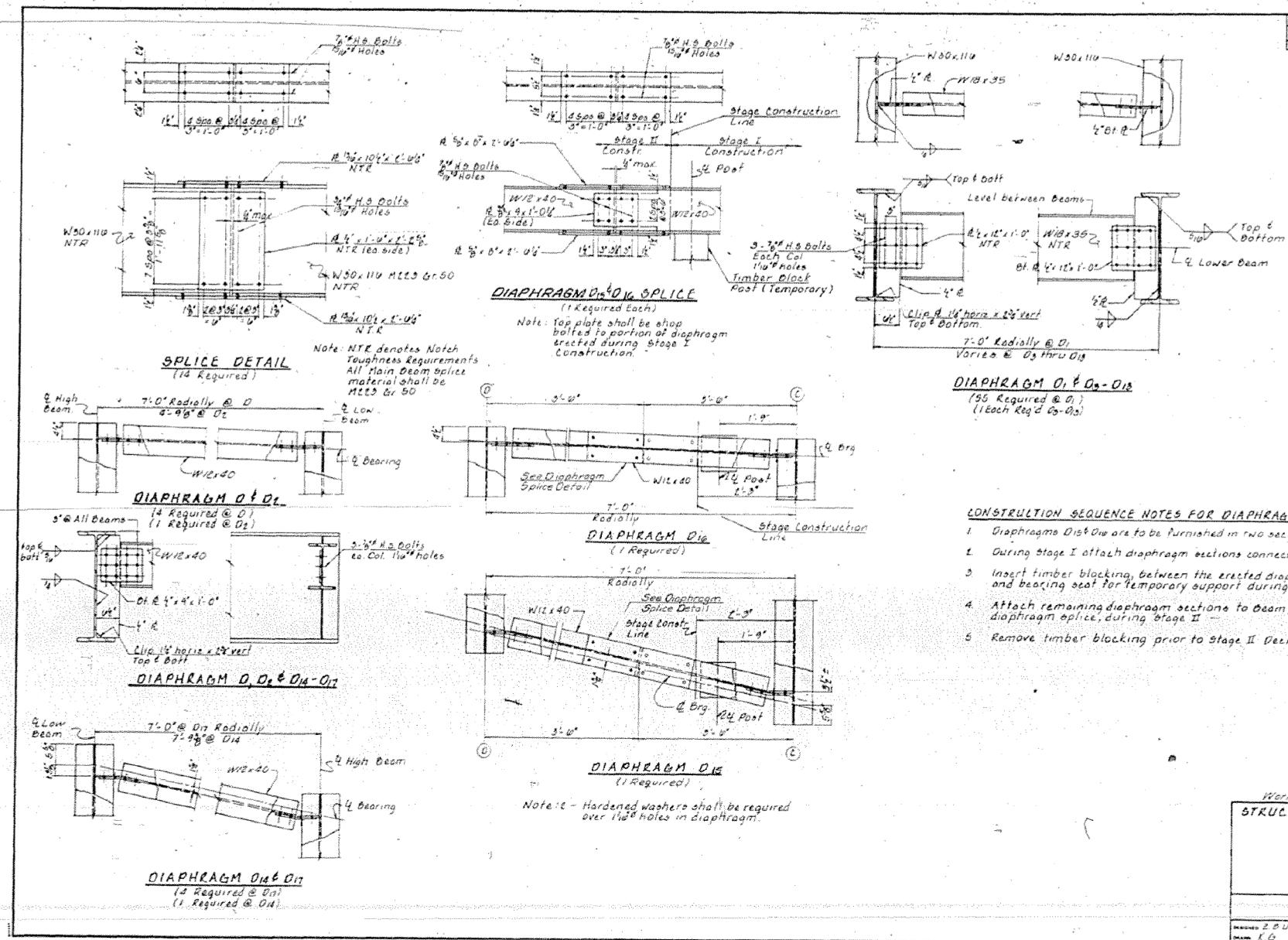


SECTION NO.	SECTION	COUNTY	TOTAL SHEETS	SHEET NO.
40	40 H&I-1	MACON	68	42
SHEET 12 OF 13				

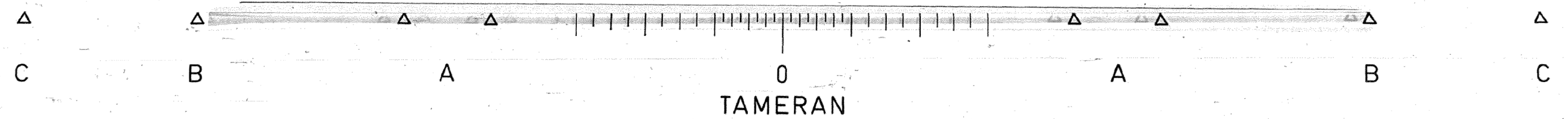


Work this sheet with sheet 11

STRUCTURAL STEEL DETAILS
FA 710 (US 51) OVER
LAKE SHORE DRIVE
SECTION 40 H&I-1
MACON COUNTY
STATION 107+09.44

COLLINS AND RICE
CONSULTING ENGINEERS

DRAWN: Z.B.U. CHECKED: K.S.
DATE: 12-6-88



FILE NAME =	USER NAME = steffenk	DESIGNED -	REVISED -
ei:\pw_work\p\midot\stefenk\d0348346\074629-sht-pln.dgn		DRAWN -	REVISED -
Default	PLOT SCALE = 100.0000' / in.	CHECKED -	REVISED -
	PLOT DATE = 8/23/2013	DATE -	REVISED -

STATE OF ILLINOIS
DEPARTMENT OF TRANSPORTATION

EXISTING STRUCTURE PLAN
S.N. 058-0007

SCALE: N/A SHEET 4 OF 13 SHEETS STA. TO STA.

*D7 BRIDGE PAINTING 2014-4				
F.A.P. RTE.	SECTION	COUNTY	TOTAL SHEETS	SHEET NO.
710	.	MACON	16	7
CONTRACT NO. 74629				
ILLINOIS FED. AID PROJECT				