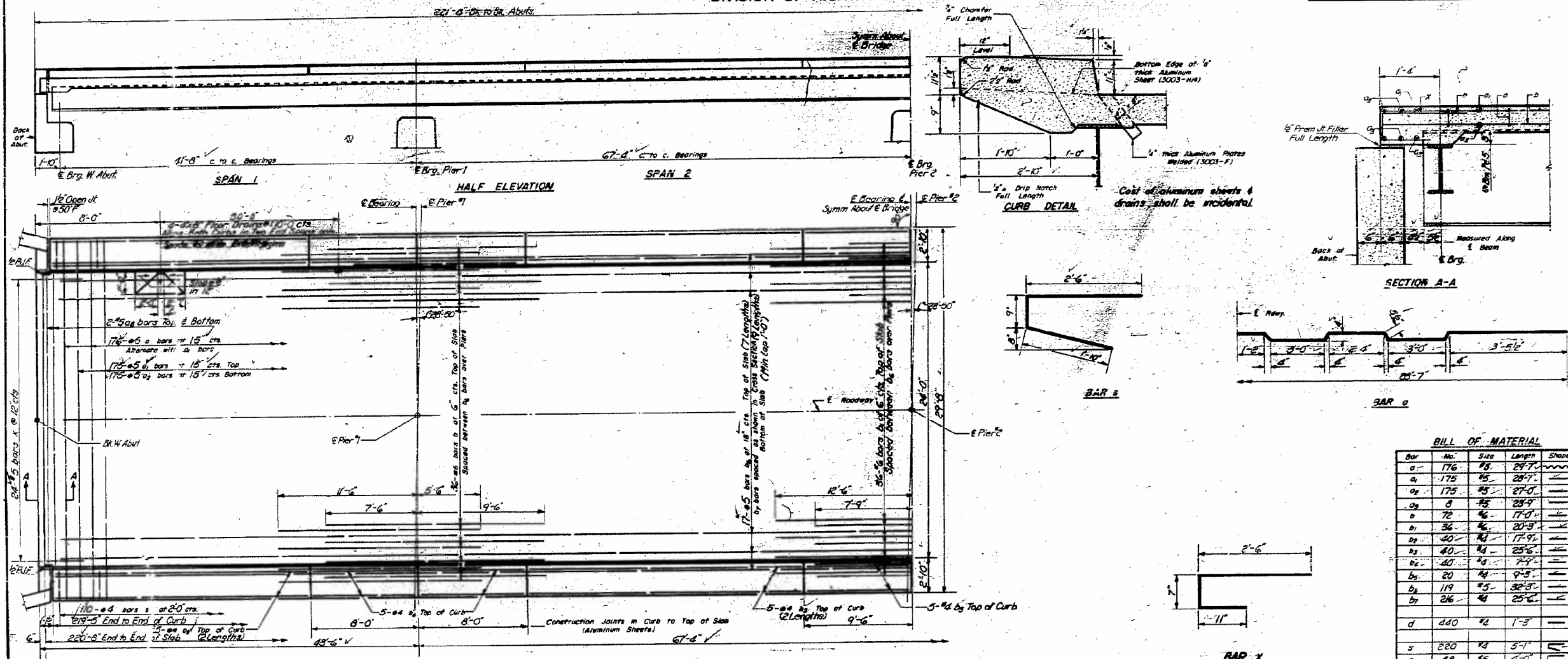


STATE OF ILLINOIS  
DEPARTMENT OF PUBLIC WORKS & BUILDINGS  
DIVISION OF HIGHWAYS

PROJECT NO.	SECTION	COUNTY	TOTAL SHEETS	SHEET NO.
RT. 57	257H8-1	EFFINGHAM	35	10
SHEET NO. 3				
11 SHEETS				



**BILL OF MATERIAL**

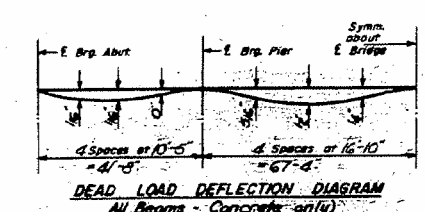
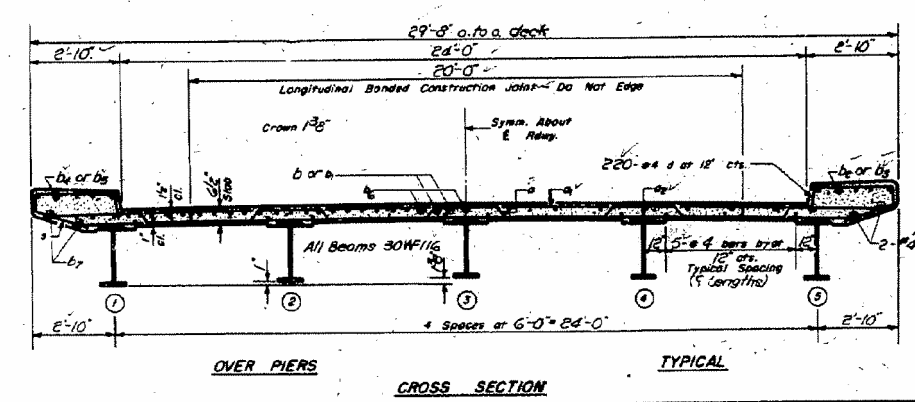
Bar	No.	Size	Length	Shape
a	176	#5	29'-7"	—
a	175	#5	28'-7"	—
a	175	#5	27'-0"	—
a	8	#5	25'-9"	—
b	72	#4	17'-9"	—
b	36	#4	20'-3"	—
b	40	#4	17'-9"	—
b	40	#4	25'-6"	—
b	40	#4	7'-9"	—
b	20	#4	9'-3"	—
b	119	#5	32'-5"	—
b	216	#4	25'-6"	—
d	440	#4	1'-3"	—
s	220	#4	5'-1"	—
x	48	#5	4'-0"	—
Class X Concrete				Cu. Yd. 1770
Reinforcement Bars				Lb. 29,190
Structural Steel				Lb. 155,870

Weight of Bolsters, Rockers, Bearing Plates, Lead Plates and Anchor Bolts included as Structural Steel. Est. Weight = 6480 lbs.

**METHOD OF DETERMINING FILET HEIGHT "f"**  
After all structural steel has been erected elevations of the top flanges of the beams shall be taken at intervals shown on sheet No. 3. These elevations subtracted from the top of slab elevations with correction for D.L. Deflections for these points minus floor thickness equals the fillet heights above top of beam.

DESIGNED: W. Heide  
CHECKED: T. M. Young  
DRAWN: W. S. Sausman  
EXAMINED: W. E. Brannaman  
APPROVED: R. P. Brantelmann

July 29 1960



**DESIGN STRESSES**  
16 #5000 Structural Steel  
16 #5000 Reinforcement  
10 #1400 Superstructure  
16 #1400 Superstructure  
n = 10

**SUPERSTRUCTURE**  
FAI RT. 57 SEC. 257H8-1  
EFFINGHAM COUNTY  
STA. 4780+7.28