

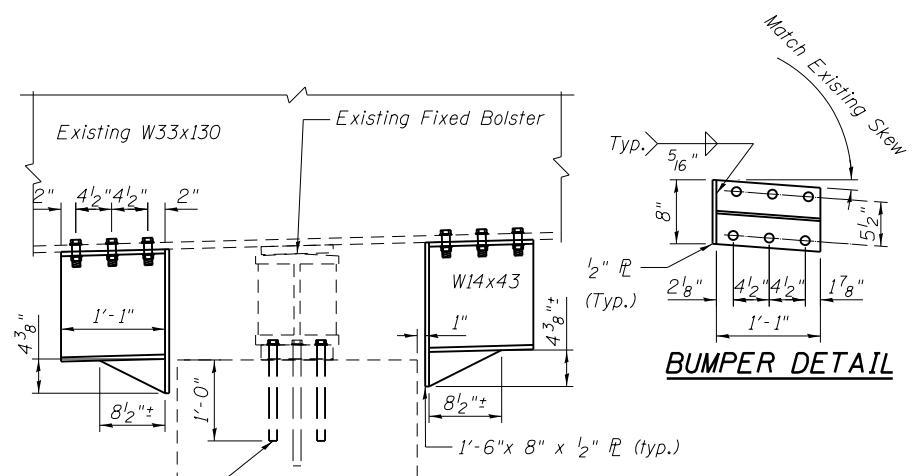
LEGEND

■ Area of Full Depth Deck Repair

DECK REPAIR PLAN

BILL OF MATERIAL

ITEM	UNIT	QUANTITY
Deck Slab Repair (Full)	Sq. Yd.	3.6
Furnishing and Erecting Structural Steel	Pound	2240
Protective Shield	Sq. Yd.	8
Anchor Bolts, 1"	Each	64



1" ϕ Anchor Bolt with 2 1/2" x 2 1/2" x 5/16" PL washer under nut. Holes in cap to be drilled. (typ.)

NEW BUMPERS

(At Existing Fixed Bearing Bolster on East Pier on both structures)

- Notes:
- The bumpers shall be galvanized after shop fabrication according to AASHTO M 232.
 - Anchor bolts and plate washers shall be galvanized according to AASHTO M 232.

BENTON & ASSOCIATES, INC.

FILE NAME = P:\10e2166-2\Design\	USER NAME =	DESIGNED - MBH	REVISED - 10/3/13
Plans\082-0158 & 082-0159		CHECKED - SJH	REVISED -
0820158-76022-004-Deck.dgn	PLOT SCALE =	DRAWN - MBH	REVISED -
	PLOT DATE =	CHECKED - SJH	REVISED -

**STATE OF ILLINOIS
DEPARTMENT OF TRANSPORTATION**

**DECK REPAIRS
STRUCTURE NO. 082-0158 & 082-0159**

SHEET NO. 5 OF 8 SHEETS

F.A.I. RTE.	SECTION	COUNTY	TOTAL SHEETS	SHEET NO.
64	82-1VBI-1 / 82-1VBR-1	ST. CLAIR	208	163
CONTRACT NO. 76022				
FED. ROAD DIST. NO. 8 ILLINOIS FED. AID PROJECT				