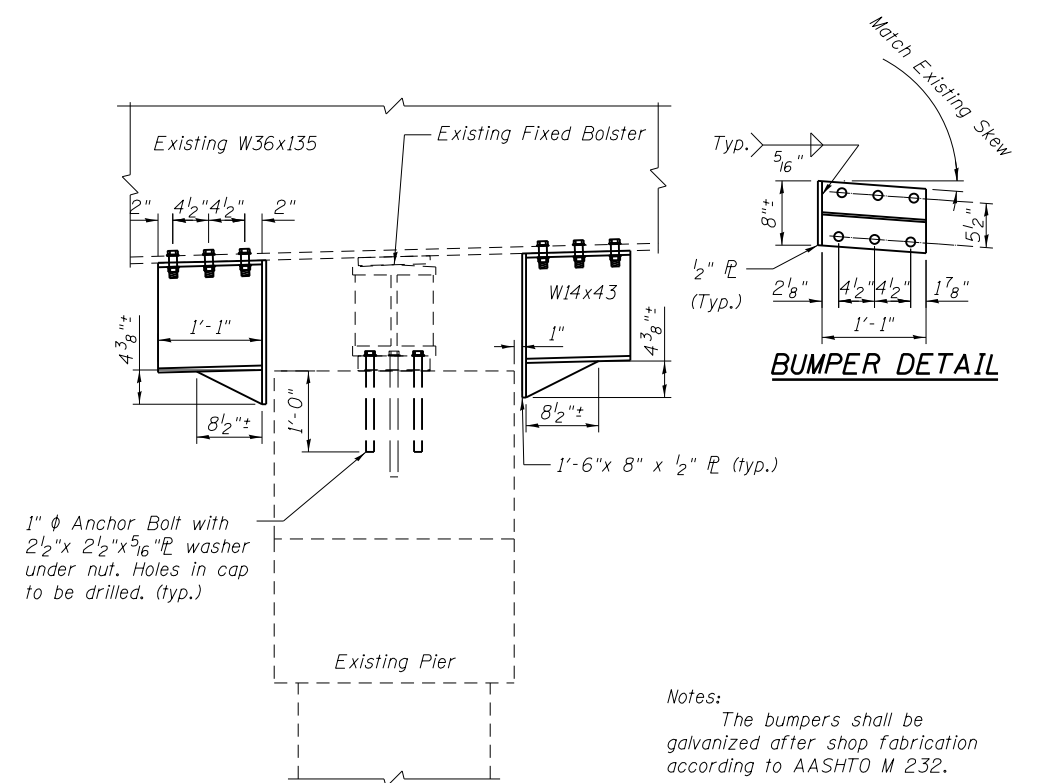


**FULL DEPTH DECK REPAIR PLAN**

**LEGEND**

- Area of Partial Depth Deck Repair
- Area of Full Depth Deck Repair



**BUMPER DETAIL**

Notes:  
The bumpers shall be galvanized after shop fabrication according to AASHTO M 232.

**NEW BUMPERS**  
(At Existing Fixed Bearing Bolster on East Pier on both structures)

**BILL OF MATERIAL**

ITEM	UNIT	QUANTITY
Deck Slab Repair (Full)	Sq. Yd.	1.3
Deck Slab Repair (Partial)	Sq. Yd.	5.7
Furnishing and Erecting Structural Steel	Pound	2520
Remove and Re-erect Existing Lighting Unit	Each	1
Protective Shield	Sq. Yd.	63
Anchor Bolts, 1"	Each	72

**BENTON & ASSOCIATES, INC.**

FILE NAME = P:\10e2166-2\Design\	USER NAME =	DESIGNED - MBH	REVISED -
Plans\082-0160 & 082-0161		CHECKED - SJH	REVISED -
0820160-76022-004-Deck.dgn	PLOT SCALE =	DRAWN - JAS	REVISED -
	PLOT DATE =	CHECKED - SJH	REVISED -

**STATE OF ILLINOIS  
DEPARTMENT OF TRANSPORTATION**

**DECK REPAIRS  
STRUCTURE NO. 082-0160 & 082-0161**

SHEET NO. 5 OF 10 SHEETS

F.A.I. RTE.	SECTION	COUNTY	TOTAL SHEETS	SHEET NO.
64	82-2HBI	ST. CLAIR	208	171
CONTRACT NO. 76022				
FED. ROAD DIST. NO. 8 ILLINOIS FED. AID PROJECT				