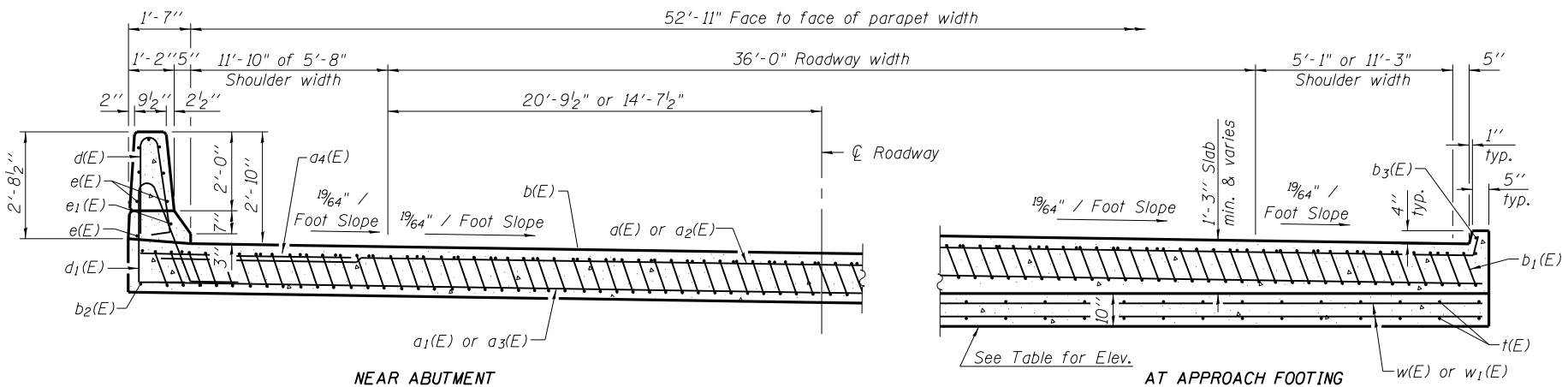
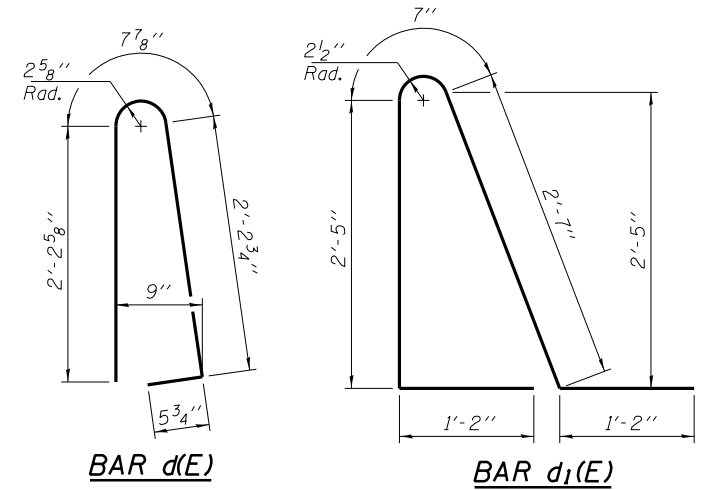
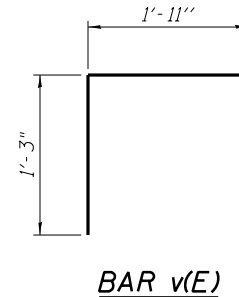


\* Tilt #9 b<sub>1</sub>(E) bars as required to maintain clearance.  
 \*\*\* Cost included with Concrete Superstructure.

Notes:  
 See sheet Z of 9 for Detail A and View B-B.  
 Approach slab and parapet concrete shall be paid for as Concrete Superstructure.  
 Approach footing concrete shall be paid for as Concrete Structures.  
 Reinforcement shall be paid for as Reinforcement Bars, Epoxy Coated.  
 For v(E) bar details, see sheet 8 of 9.  
 The approach footing maximum applied service bearing pressure (Q<sub>max</sub>) = 2.0 ksf.  
 For bar splicer details, see sheet 9 of 9.  
 Cost of excavation for approach footing included with Concrete Structures.



SECTION D-D  
 (See Plan for dimensions not shown)

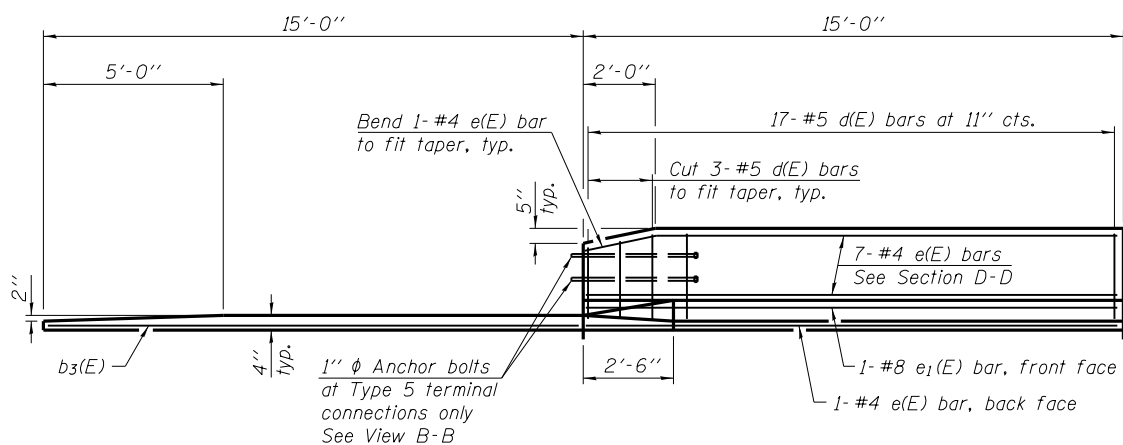


BOTTOM OF SPREAD FOOTING ELEVATIONS

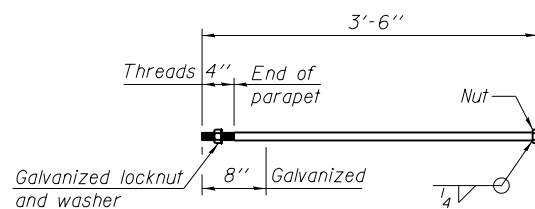
| Structure No. | Approach Pavement | Construction Stage | Bot. Slab Elev. |
|---------------|-------------------|--------------------|-----------------|
| 082-0164      | West              | North End          | 429.84          |
|               |                   | South End          | 431.20          |
|               | East              | North End          | 429.82          |
|               |                   | South End          | 431.18          |
| 082-0165      | West              | North End          | 429.67          |
|               |                   | South End          | 431.03          |
|               | East              | North End          | 429.69          |
|               |                   | South End          | 431.05          |

FOUR APPROACHES  
 BILL OF MATERIAL

| Bar                              | No. | Size    | Length | Shape |
|----------------------------------|-----|---------|--------|-------|
| a(E)                             | 200 | #4      | 24'-3" | ┌───┐ |
| a <sub>1</sub> (E)               | 368 | #5      | 23'-8" | ┌───┐ |
| a <sub>2</sub> (E)               | 100 | #5      | 7'-2"  | ┌───┐ |
| a <sub>3</sub> (E)               | 184 | #5      | 7'-2"  | ┌───┐ |
| a <sub>4</sub> (E)               | 96  | #6      | 6'-6"  | ┌───┐ |
| b(E)                             | 188 | #4      | 29'-8" | ┌───┐ |
| b <sub>1</sub> (E)               | 540 | #9      | 29'-9" | ┌───┐ |
| b <sub>2</sub> (E)               | 8   | #4      | 14'-8" | ┌───┐ |
| b <sub>3</sub> (E)               | 8   | #4      | 14'-8" | ┌───┐ |
| d(E)                             | 136 | #5      | 5'-7"  | ┌───┐ |
| d <sub>1</sub> (E)               | 136 | #5      | 7'-11" | ┌───┐ |
| e(E)                             | 64  | #4      | 14'-8" | ┌───┐ |
| e <sub>1</sub> (E)               | 8   | #8      | 14'-8" | ┌───┐ |
| t(E)                             | 464 | #4      | 9'-9"  | ┌───┐ |
| w(E)                             | 320 | #5      | 23'-8" | ┌───┐ |
| w <sub>1</sub> (E)               | 160 | #5      | 7'-2"  | ┌───┐ |
| v(E)                             | 224 | #5      | 3'-2"  | ┌───┐ |
| v <sub>1</sub> (E)               | 224 | #5      | 2'-6"  | ┌───┐ |
| Concrete Superstructure          |     | Cu. Yd. | 320    |       |
| Concrete Structures              |     | Cu. Yd. | 68     |       |
| Reinforcement Bars, Epoxy Coated |     | Pound   | 90190  |       |
| Concrete Anchors                 |     | Each    | 448    |       |
| Bar Splicers                     |     | Each    | 888    |       |



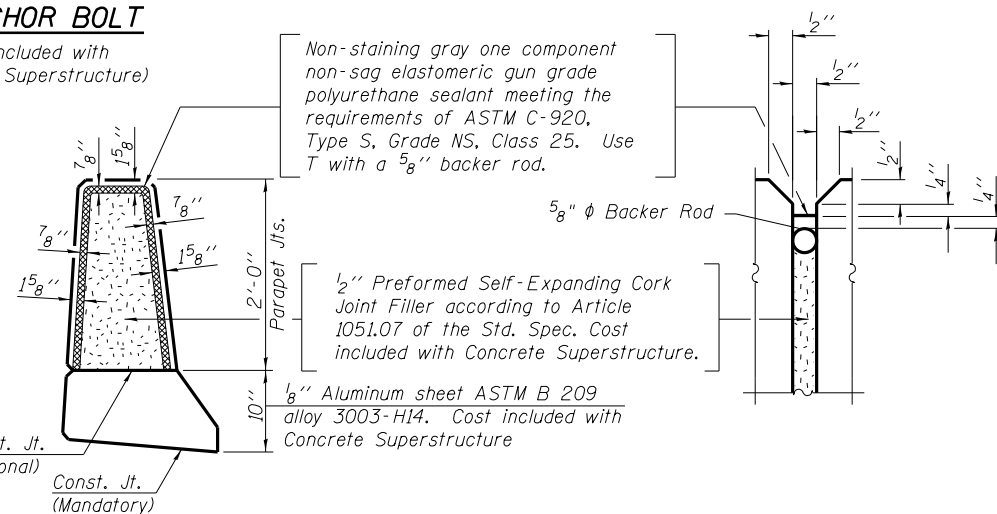
VIEW E-E



1" ANCHOR BOLT

(Cost included with Concrete Superstructure)

Non-staining gray one component non-sag elastomeric gun grade polyurethane sealant meeting the requirements of ASTM C-920, Type S, Grade NS, Class 25. Use T with a 5/8" backer rod.



PARAPET JOINT DETAILS

(Sheet 2 of 2)

BA-R 7-1-10  
 BENTON & ASSOCIATES, INC.

| FILE NAME  | USER NAME | DESIGNED | REVISION |
|--|-----------|----------|----------|
| P:\10e2166-4\ Design\ Plans\ 0820164-76022-005-Appr2.dgn |           | MBH      |          |
|  |           | RHB      |          |
|  |           | MBH      |          |
|  |           | RHB      |          |

STATE OF ILLINOIS  
 DEPARTMENT OF TRANSPORTATION

BRIDGE APPROACH SLAB DETAILS  
 STRUCTURE NO. 082-0164 & 082-0165

SHEET NO. 9 OF 10 SHEETS

| F.A.P. RT.                                      | SECTION | COUNTY    | TOTAL SHEETS | SHEET NO. |
|---|---------|-----------|--------------|-----------|
| 64  | 82-3HB  | ST. CLAIR | 208          | 185       |
| CONTRACT NO. 76022                              |         |           |              |           |
| FED. ROAD DIST. NO. 8 ILLINOIS FED. AID PROJECT |         |           |              |           |