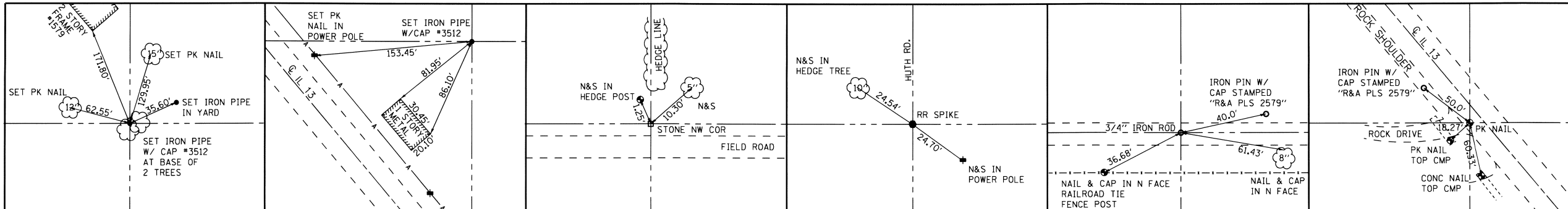


CONTROL AND SECTION CORNER TIE SHEET



SW COR NW 1/4 NE 1/4 SEC 17, T. 3 S., R. 6 W. 04/09/2013 MONUMENT RECORD DOC. NO. A02363066 N=586035.2450, E=405786.8563

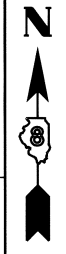
SE COR NW 1/4 NE 1/4 SEC 17, T. 3 S., R. 6 W. 04/09/2013 MONUMENT RECORD DOC. NO. A02363066 N=586035.1370, E=407112.0388

NE COR SEC 17, T. 3 S., R. 6 W. 05/09/1994 MONUMENT RECORD DOC. NO. A01226949 (BK 2976 PG 1065) N=587387.5135, E=408421.2927

N 1/4 COR SEC 17, T. 3 S., R. 6 W. 05/09/1994 MONUMENT RECORD DOC. NO. A01226950 (BK 2976 PG 1066) N=587387.8877, E=405770.2381

S 1/4 COR SEC 17, T. 3 S., R. 6 W. 06/23/1997 MONUMENT RECORD DOC. NO. A01379282 (BK 3170 PG 1910) N=581976.9076, E=405836.7159

E 1/4 COR SEC 17, T. 3 S., R. 6 W. 06/23/1997 MONUMENT RECORD DOC. NO. A01379282 (BK 3170 PG 1910) N=584682.5446, E=408453.1500

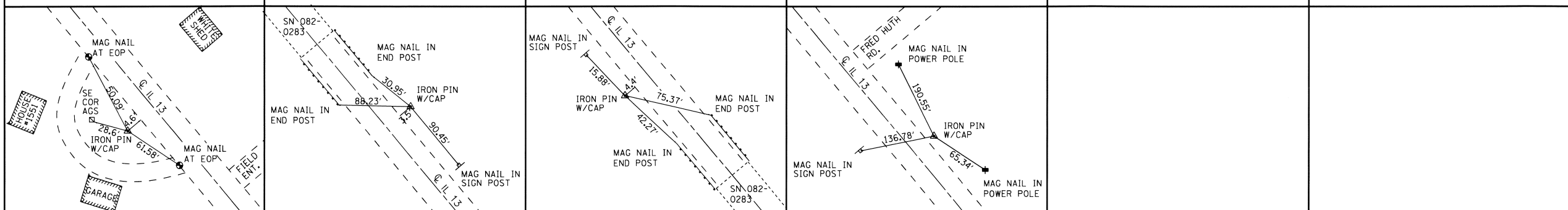


SPACE RESERVED FOR RECORDING OFFICER

STATE OF ILLINOIS )  
 ) SS  
 COUNTY OF MADISON )

I, GREGORY S. McVICAR, AN ILLINOIS PROFESSIONAL LAND SURVEYOR, STATE THAT I HAVE SURVEYED THE PLAT OF HIGHWAY SHOWN HEREON AND THAT THIS PROFESSIONAL SERVICE CONFORMS TO THE CURRENT ILLINOIS MINIMUM STANDARDS FOR A BOUNDARY SURVEY FOR THE PROPOSED PARCEL(S) TO BE ACQUIRED BY THE STATE OF ILLINOIS, DEPARTMENT OF TRANSPORTATION, SHOWN HEREON.

DATED 4/10/13  
Gregory S. McVicar  
 GREGORY S. McVICAR, PLS NO. 3512  
 LICENSE EXPIRATION DATE: 11/30/2014



IDOT CONTROL POINT NO. 2 N=585874.1555, E=407013.1435

IDOT CONTROL POINT NO. 3 N=586240.4682, E=406628.5220

IDOT CONTROL POINT NO. 4 N=586473.2137, E=406291.9557

IDOT CONTROL POINT NO. 5 N=586825.2190, E=405928.0286

**SA** **SHERRILL ASSOCIATES, INC.**  
 Engineers - Surveyors - Planners  
 Professional Design Firm Number 184-001238  
 316 North Main Street, Edwardsville, IL 62025  
 2727 Lemay Ferry Road, St. Louis, MO 63125

COMPLETION DATE OF FIELD WORK PERFORMED  
 LAND SURVEY: MARCH, 2012 ROW STAKING: APRIL, 2013

ILLINOIS DEPARTMENT OF TRANSPORTATION  
 PLAT OF HIGHWAYS  
 FAP ROUTE 103 (IL 13)  
 SECTION 23BR-1  
 ST. CLAIR COUNTY  
 JOB NO. R-98-002-12  
 CONTROL AND SECTION CORNER TIE SHEET

NOT TO SCALE SHEET 5 OF 5

ILLINOIS DEPARTMENT OF TRANSPORTATION  
 DIVISION OF HIGHWAYS/REGION 5/DISTRICT 8  
 1102 EASTPORT PLAZA DRIVE  
 COLLINGSVILLE, ILLINOIS 62234-6198

F.A. RTE.	SECTION	COUNTY	TOTAL SHEETS	SHEET NO.
103	23BR-1	ST. CLAIR	38	19
				CONTRACT NO. 76E21