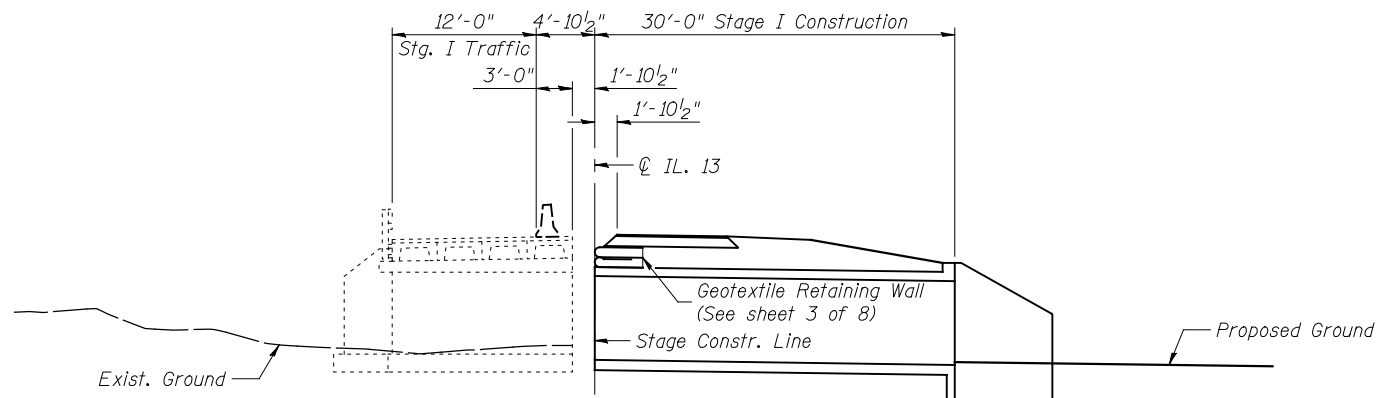
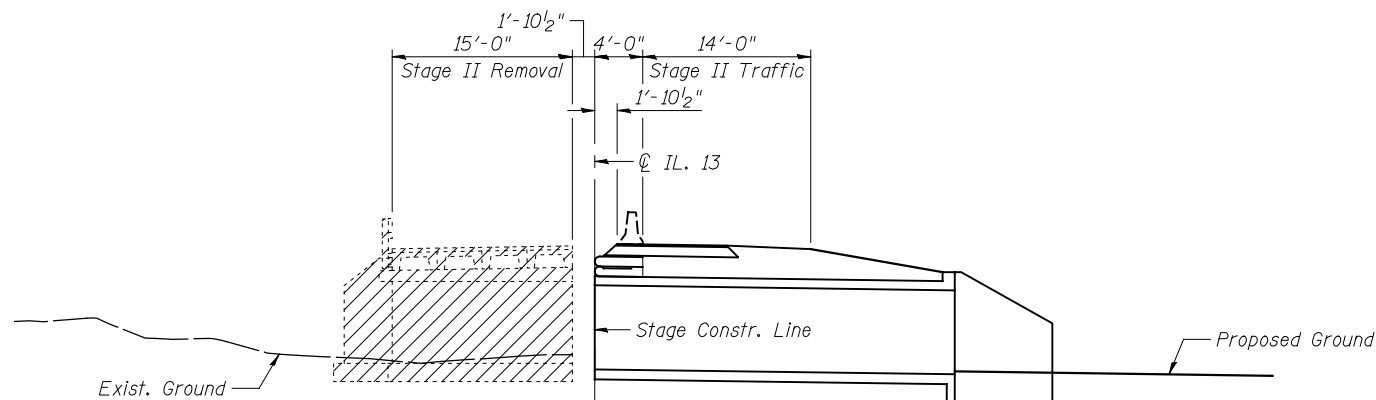


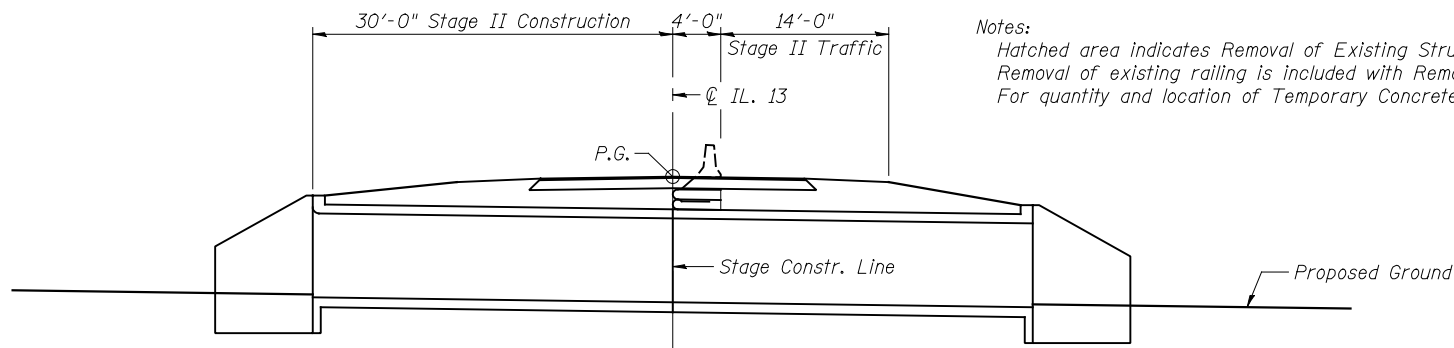
**STAGE I REMOVAL**  
(Looking South)



**STAGE I CONSTRUCTION**

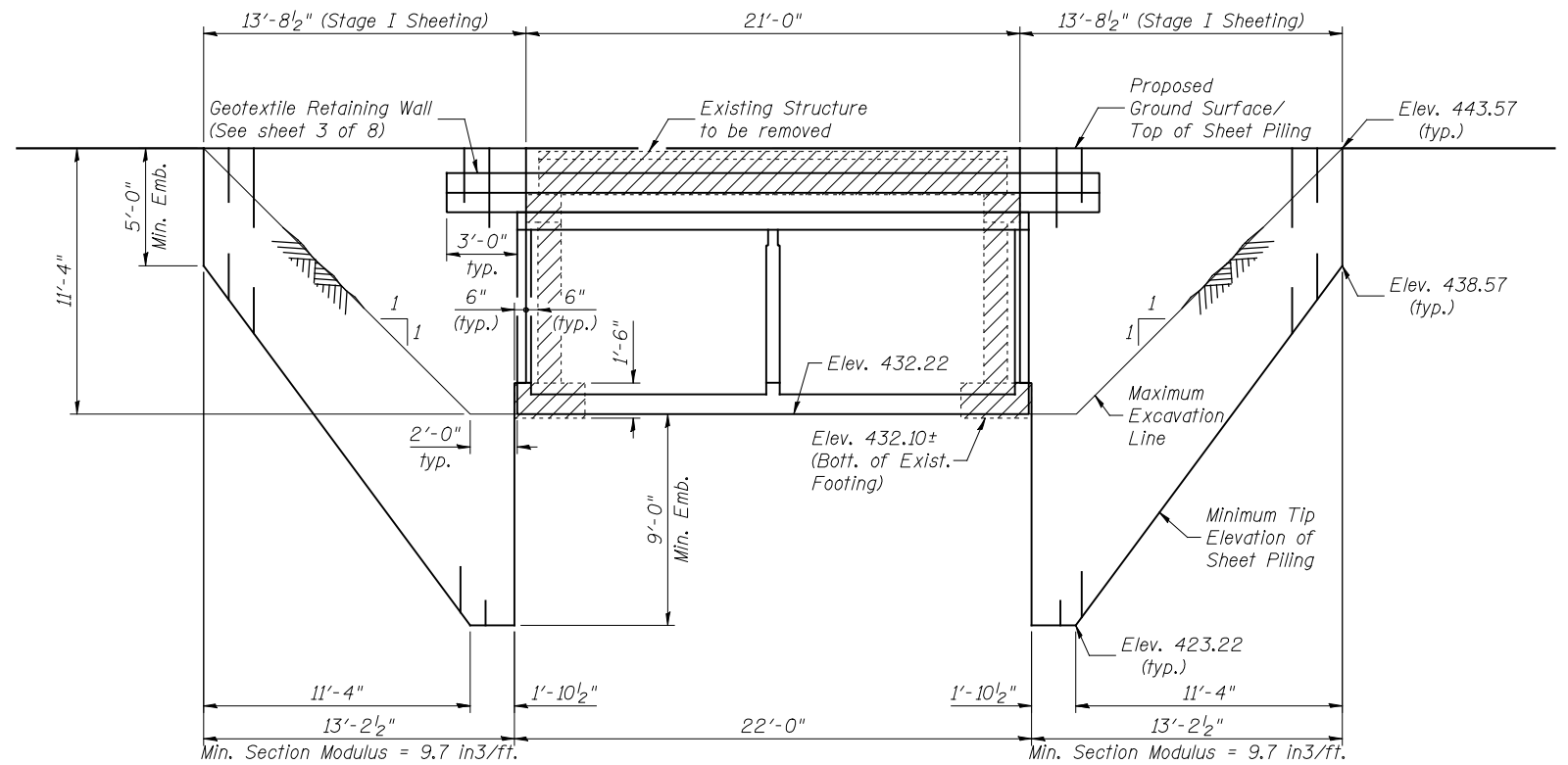


**STAGE II REMOVAL**



**STAGE II CONSTRUCTION**

Notes:  
Hatched area indicates Removal of Existing Structures.  
Removal of existing railing is included with Removal of Existing Structures.  
For quantity and location of Temporary Concrete Barrier, see Roadway Plans.



**TEMPORARY SHEET PILING DETAILS**  
(Looking Downstream)

If the Contractor chooses to alter the temporary cantilevered sheet piling design requirements shown on plans, a design submittal including plan details and calculations will be required for review and acceptance by the Engineer.  
The Contractor shall connect the first sheet to the existing abutment wall to ensure stability of sheets driven to the top of the existing footing. This connection shall be reviewed and accepted by the Engineer and included in the cost for Temporary Sheet Piling.

FILE: J:\\_ID0110219 IL-D88VW19 IL-13\_Marlissa-Ph21-RCBC-0822046-76E21-002-stageconstr.dgn  
SAVE DATE: 6/19/2013

FILE NAME =	USER NAME = DCD	DESIGNED - DCD	REVISED -
... \0822046-76E21-002-stageconstr.dgn		CHECKED - PGM	REVISED -
	PLOT SCALE =	DRAWN - P. Ray	REVISED -
	PLOT DATE = 06/28/2013 16:47:28	CHECKED - DCD	REVISED -

**STATE OF ILLINOIS**  
**DEPARTMENT OF TRANSPORTATION**

**STAGE CONSTRUCTION & TEMPORARY SHEET PILING**  
**STRUCTURE NO. 082-2046**

SHEET NO. 2 OF 8 SHEETS

F.A.P. RTE.	SECTION	COUNTY	TOTAL SHEETS	SHEET NO.
103	23BR-1	ST. CLAIR	38	21
STA. 674+45		CONTRACT NO. 76E21		

ILLINOIS FED. AID PROJECT