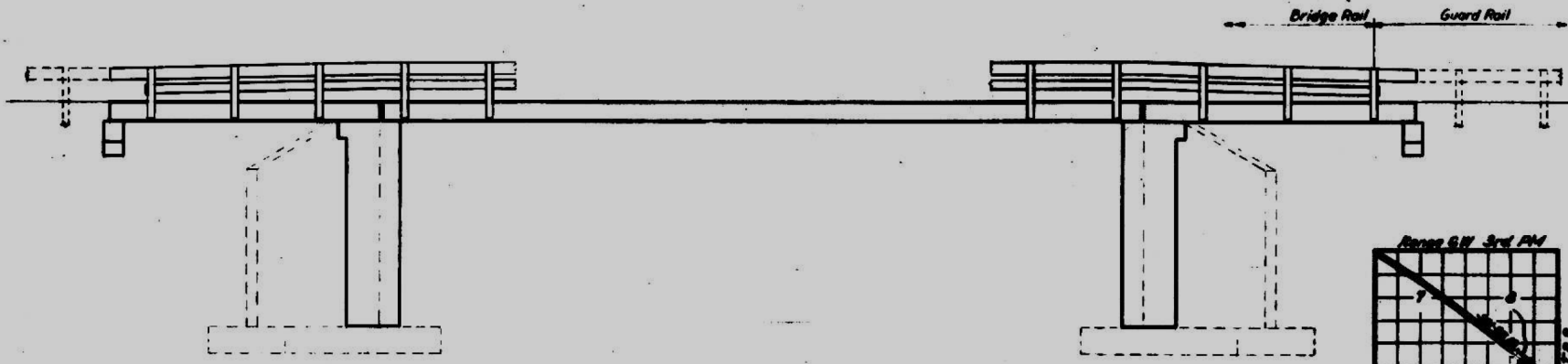


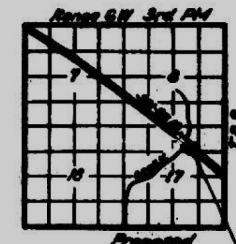
Built as S.B.I. Rt. 13, Section 29, Sta. 674+95, Year 1924
 Existing Structure - R.C. Slab on Closed Abutments
 Superstructure 20'-0" long, 32'-2" Wide
 Replace R.C. Slab using Stage Construction to maintain one lane traffic at all times.
 No temporary Bridge required.

STATE OF ILLINOIS
 DEPARTMENT OF PUBLIC WORKS & BUILDINGS
 DIVISION OF HIGHWAYS

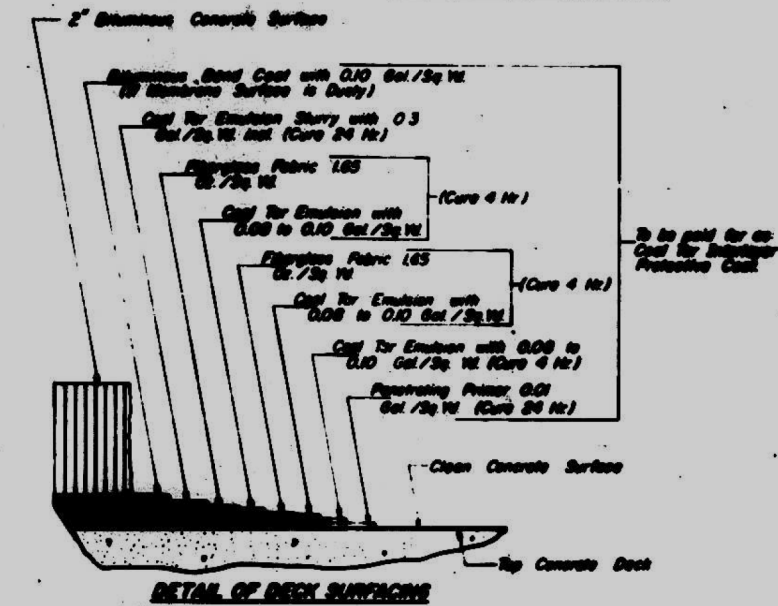
DATE	BY	CHKD	APP'D	SHEET NO.
10/15/58	J.P.	J.P.	J.P.	5



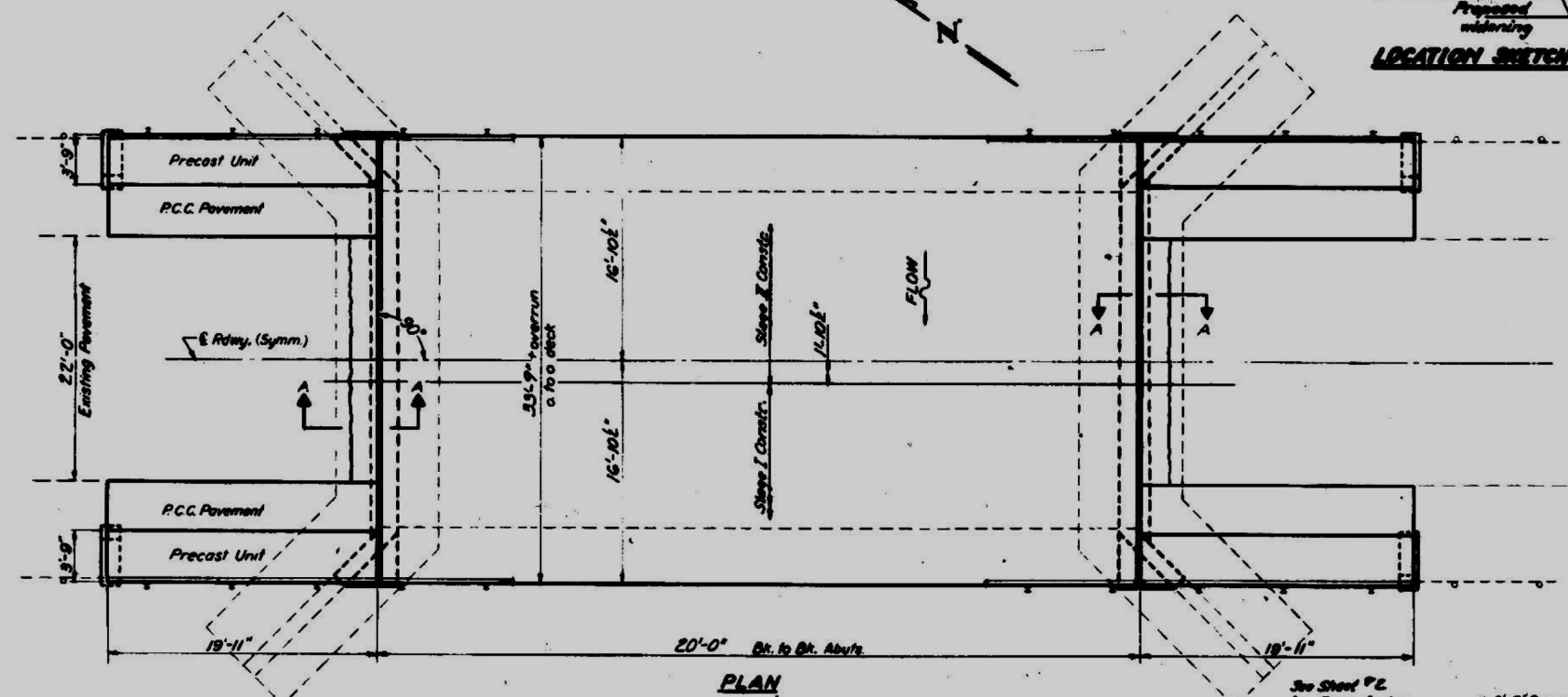
ELEVATION



LOCATION SKETCH



DETAIL OF DECK SURFACING



PLAN

GENERAL NOTES
 All reinforcement bars shall be lapped 24 diameters unless otherwise shown.
 It shall be the responsibility of the Contractor to verify all dimensions and conditions existing in the field prior to construction and ordering of materials.
 Limits of Cool Tar Interlayer Protective Coat shall be flush to back of abutments.
 Expansion bolts shall consist of self drilling expansion shields and 1/2" hooked bolts. Hooked bolts shall extend a minimum of 12" into new concrete unless otherwise shown.
 Shoulder transition to wingwall shall be shaped with broken concrete. Cost incidental.
 Any excavation shall be incidental to Bridge Contract.

TOTAL BILL OF MATERIAL

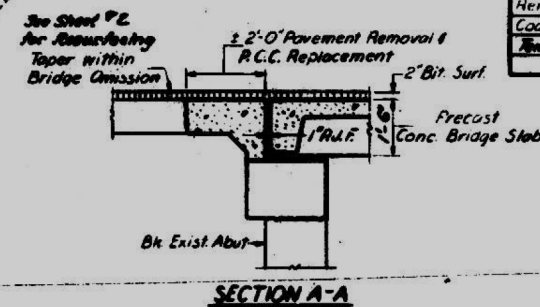
Item	Unit	Super	Sub	Total
Portland Cement Concrete Pavement (10')	Sq. Yds.	17		17
Pavement Fabric	Sq. Yds.	17		17
Concrete Removal	Cu. Yds.	3.0		3.0
Expansion Bolts (1/2")	Each	52	48	96
Class X Concrete	Cu. Yds.	5.5		5.5
Precast Concrete Bridge Slab	Sq. Ft.	968		968
Pavement Removal & P.C.C. Replacement Type 1110	Sq. Yds.	10		10
Steel Mesh, Type W	Lbs.	100		100
Reinforcement Bars	Lbs.	300		300
Removal of Existing Superstructures	L. Sum.	615		615
Cool Tar Interlayer Protective Coat	Sq. Yds.	25		25
Temporary Guard Rail	Lbs.-ft.	20		20

DESIGNED	James P. [Signature]
CHECKED	James P. [Signature]
DRAWN	J.P.
CHECKED	J.P.

DESIGN STRESSES
 FIELD UNITS
 f_c = 1400 psi. (super)
 f_c = 1000 psi. (sub)
 f_s = 20,000 psi. (tens)
 f_s = 75 psi. (flooring)
 n = 10

PRECAST UNIT
 f_c = 4,500 psi.
 f_c = 1,800 psi.
 f_s = 20,000 psi.
 n = 8

LIVE LOAD RATING = HS 20-44



SECTION A-A

GENERAL PLAN & ELEVATION
 SHEET NO. 2
 ST. CLAIR COUNTY
 ILLINOIS

NOT TO SCALE - FOR INFORMATIONAL PURPOSES ONLY