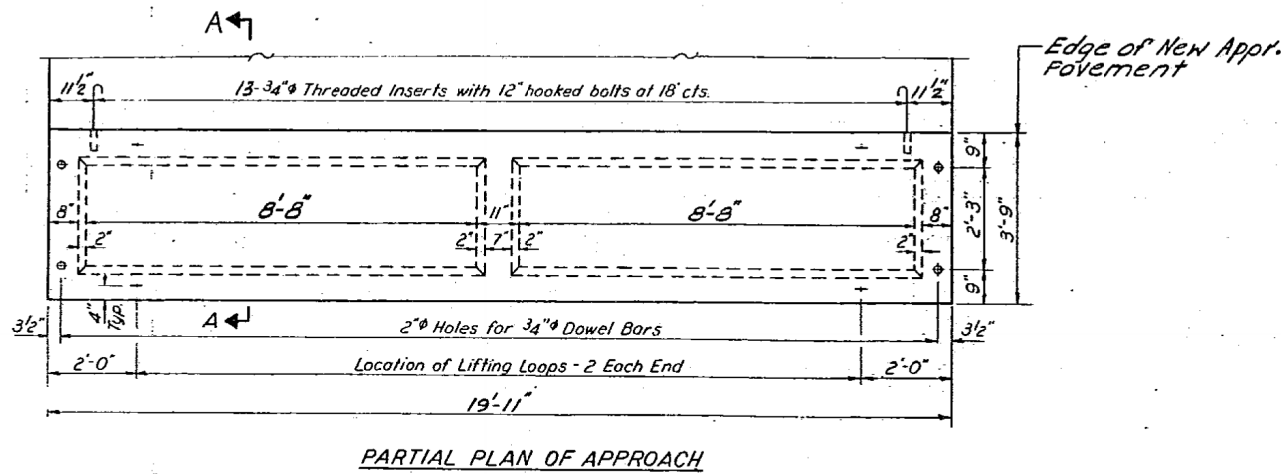
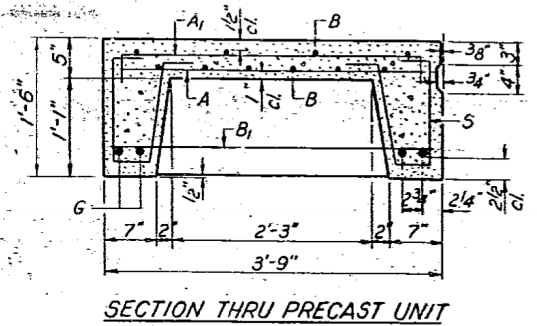
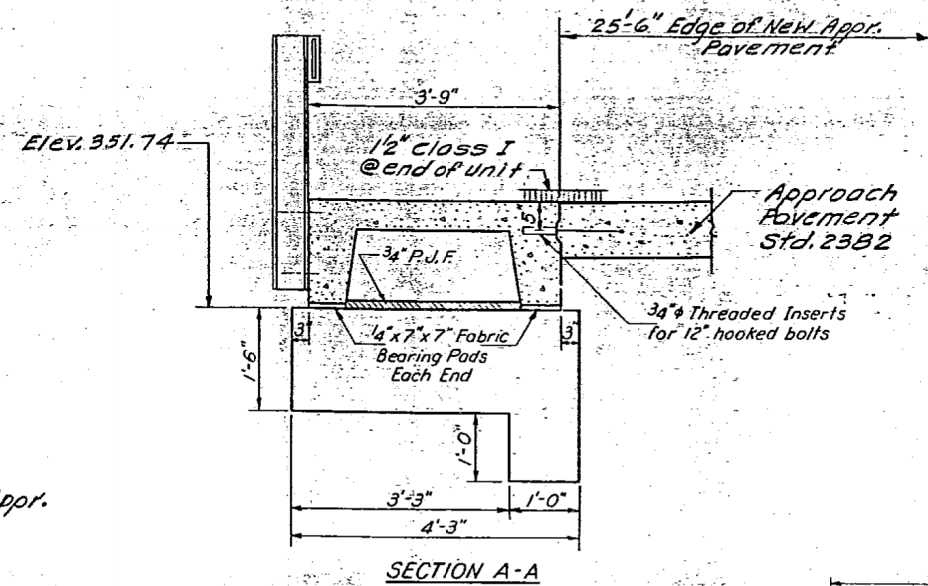
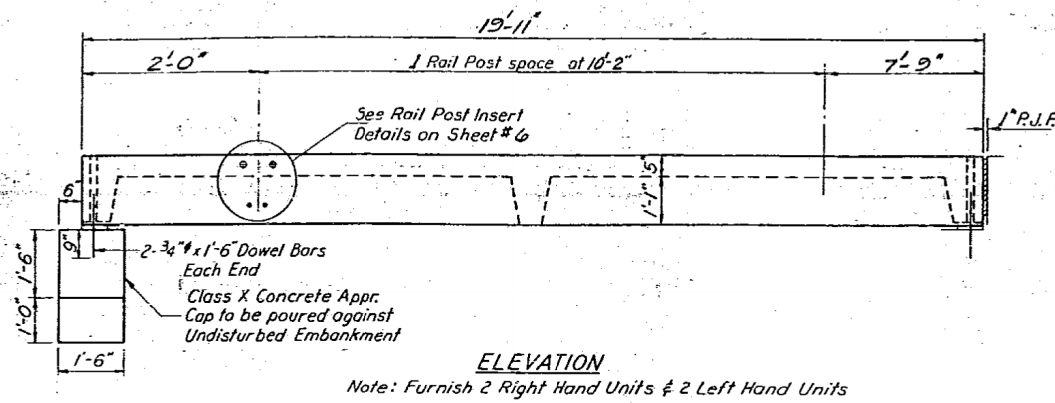


STATE OF ILLINOIS
DEPARTMENT OF TRANSPORTATION

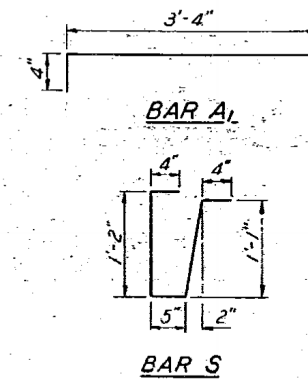
ROUTE NO.	SECTION	COUNTY	TOTAL SHEETS	SHEET NO.
S.E.L. 885	112B-DR	POPE	16	12
FED. ROAD DIST. NO. 7	ILLINOIS	FED. AID PROJECT		

SHEET NO. 4
8 SHEETS



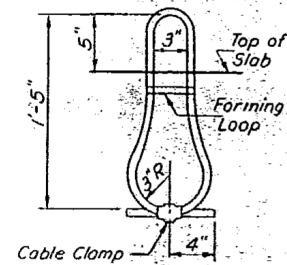
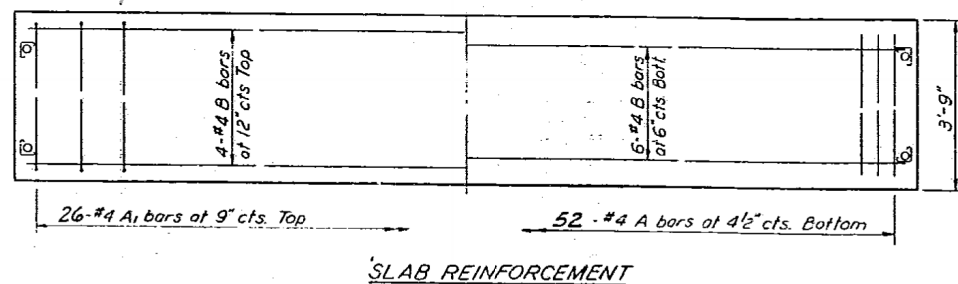
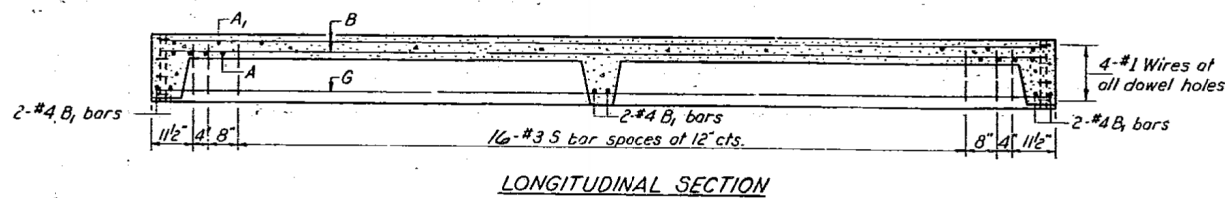
BAR LIST - ONE UNIT
Reinforcement to be cast into slab

Bar	No	Size	Length	Shape
A	52	#4	3'-3"	—
A ₁	26	#4	4'-0"	┌
B	10	#4	19'-6"	—
B ₁	6	#4	3'-6"	—
G	4	#10	19'-6"	—
S	42	#3	3'-4"	┌



NOTES

Unless otherwise approved by the Engineer, lifting loops shall be 1/2" 6 x 19 class wire rope with fiber core and shall have a minimum ultimate strength of 18,700 lbs. Loops shall be burned off after slab has been erected. Holes shall be drilled and anchor dowels grouted in place. Cost of reinforcement and accessories cast into the slab unit, bearing pads, furnishing, drilling for, placing and grouting anchor dowels and 3/4" hooked bolts is included in Unit bid price for "Precast Concrete Bridge Slab". The Precast Concrete Bridge Slab shall be erected and aligned with the exterior face of the exterior Deck Beam after Deck Beams are in final position.



STRESSES

$f_c = 4,500$ psi.
 $f_c = 4,800$ psi.
 $f_s = 20,000$ psi.
 $n = 8$

LOADING HS-20

4 UNITS
BILL OF MATERIAL

Item	Unit	Quantity
Precast Concrete Bridge Slab	Sq. Ft.	299
Class X Concrete	Cu. Yds.	1.6

APPROACH DETAILS
F.A. RT. 885 SEC. 112B-DR
POPE COUNTY
STA. 913+50.00

DESIGNED: *Perman V. Davis*
CHECKED: *Shank Damm*
DRAWN: *[Signature]*
CHECKED: *RVG SLD*

EXAMINED: *April 8 1981*
Carl E. Hummer
ENGINEER OF BRIDGE AND TRAFFIC STRUCTURES

PASSED: _____
APPROVED: _____
CHIEF HIGHWAY ENGINEER

FOR INFORMATION ONLY

	USER NAME = has	DESIGNED - JMS	REVISED -	STATE OF ILLINOIS DEPARTMENT OF TRANSPORTATION	EXISTING STRUCTURE PLANS - FOR INFORMATION ONLY STRUCTURE NO. 076-0009	F.A.P. RTE. 885	SECTION 112B-1	COUNTY POPE	TOTAL SHEETS 56	SHEET NO. 47	
	ESCA PROJECT NO. 988.12	DRAWN - HAS	REVISED -			SCALE:	SHEET NO. 4 OF 8 SHEETS	STA. TO STA.	CONTRACT NO. 78230	ILLINOIS	FED. AID PROJECT AID
	PLOT SCALE = 0.1667' / IN.	CHECKED - RDP	REVISED -								