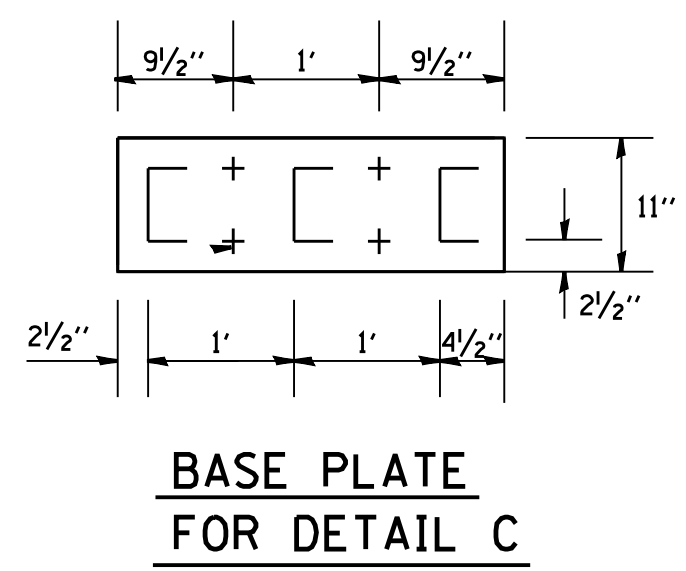
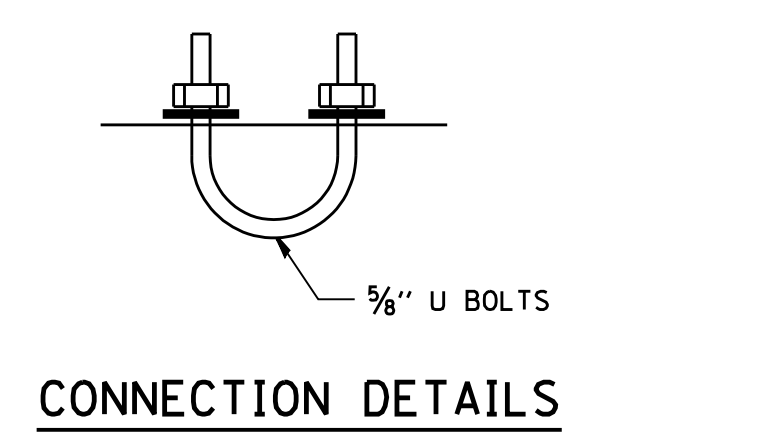
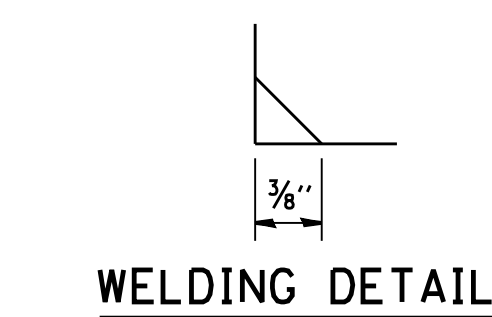
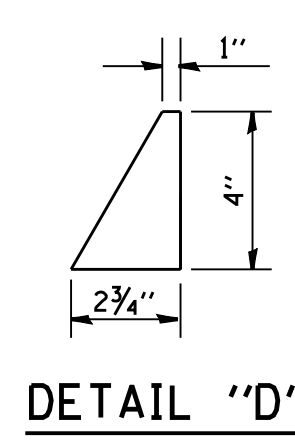
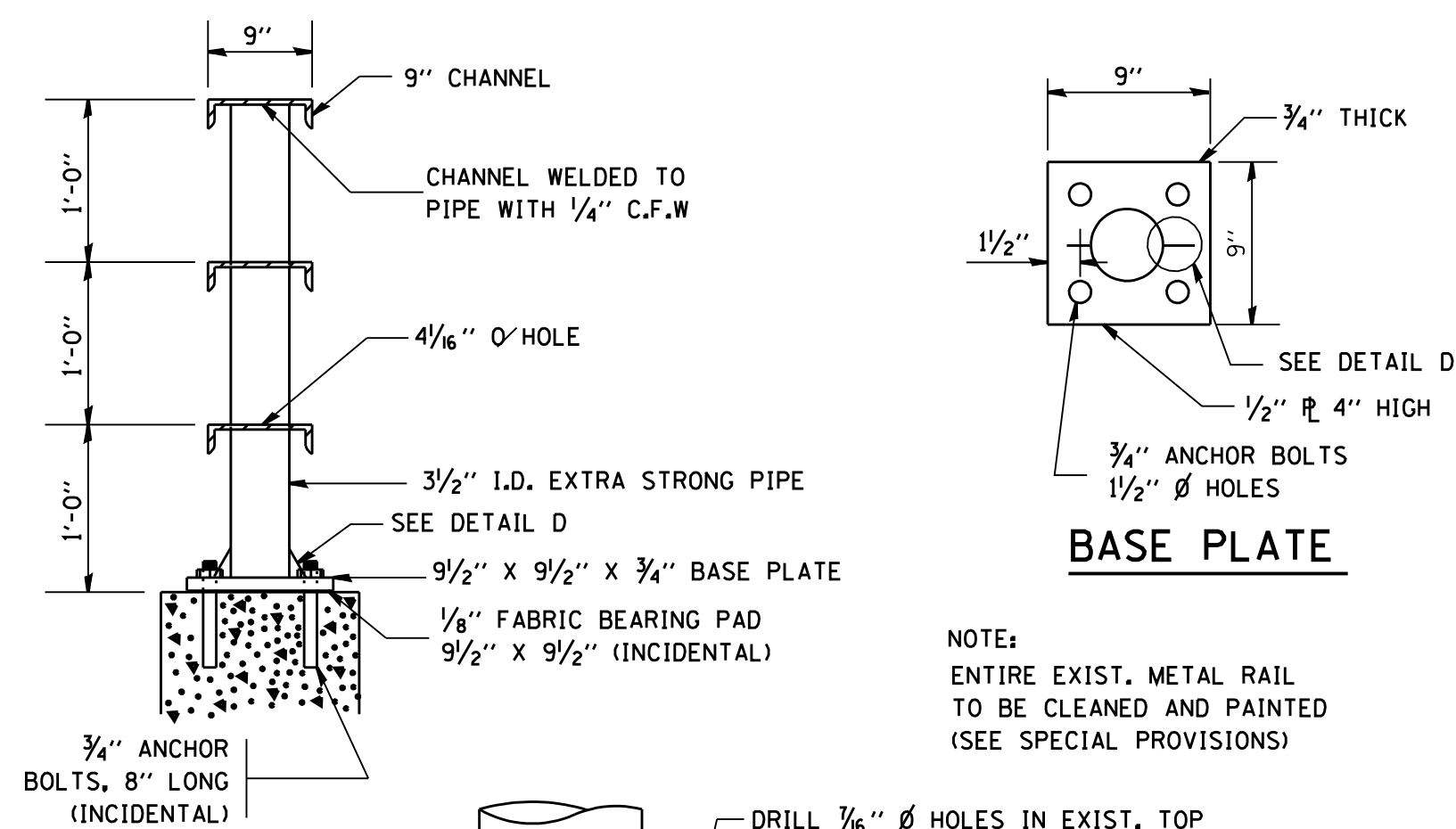
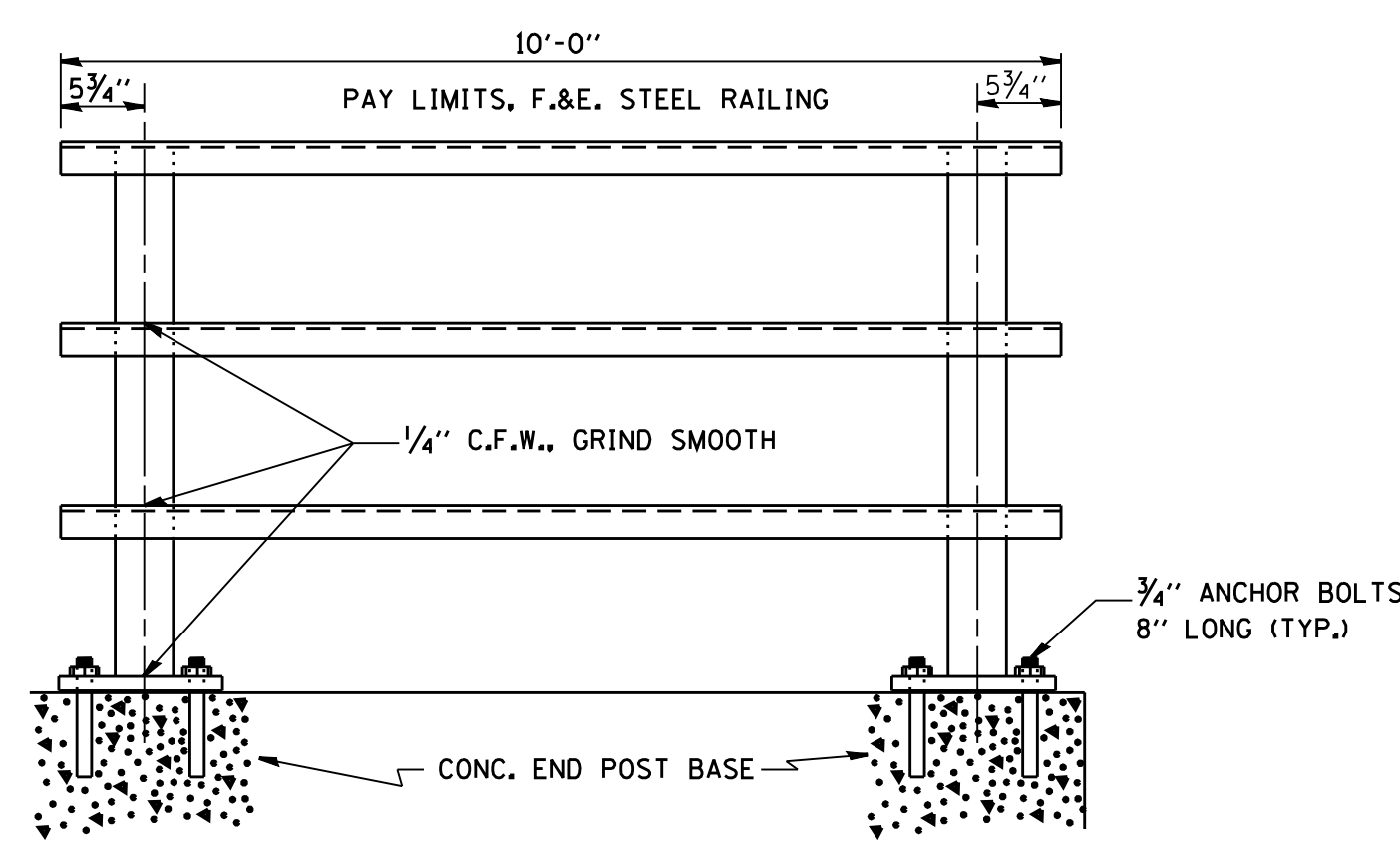
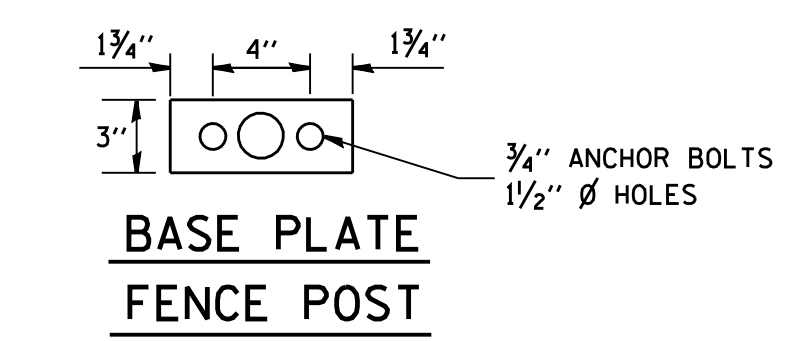
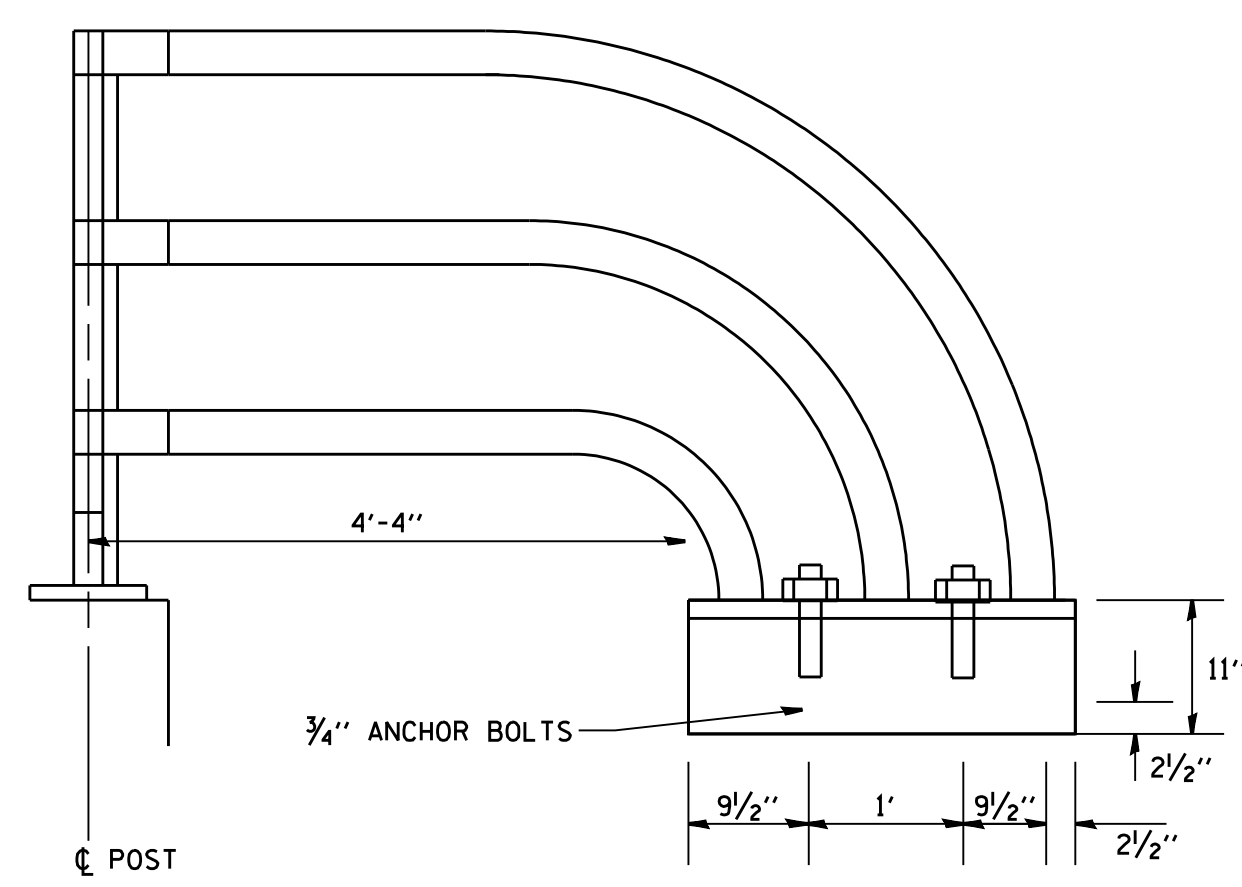
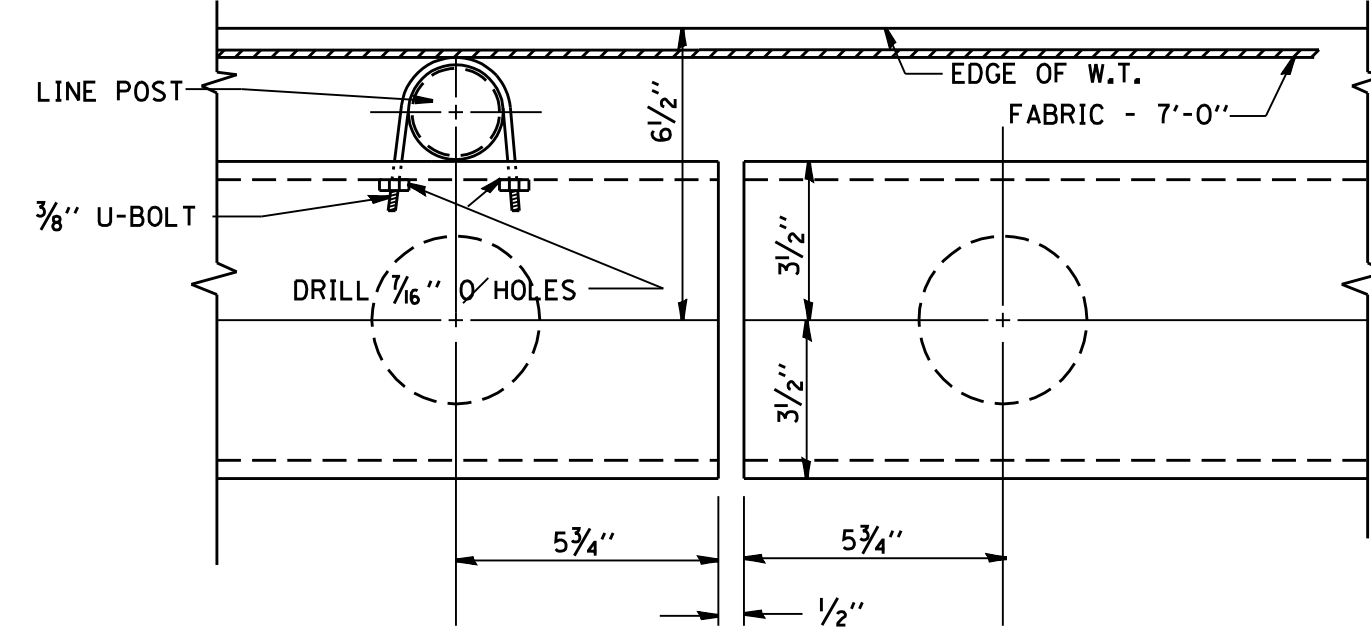
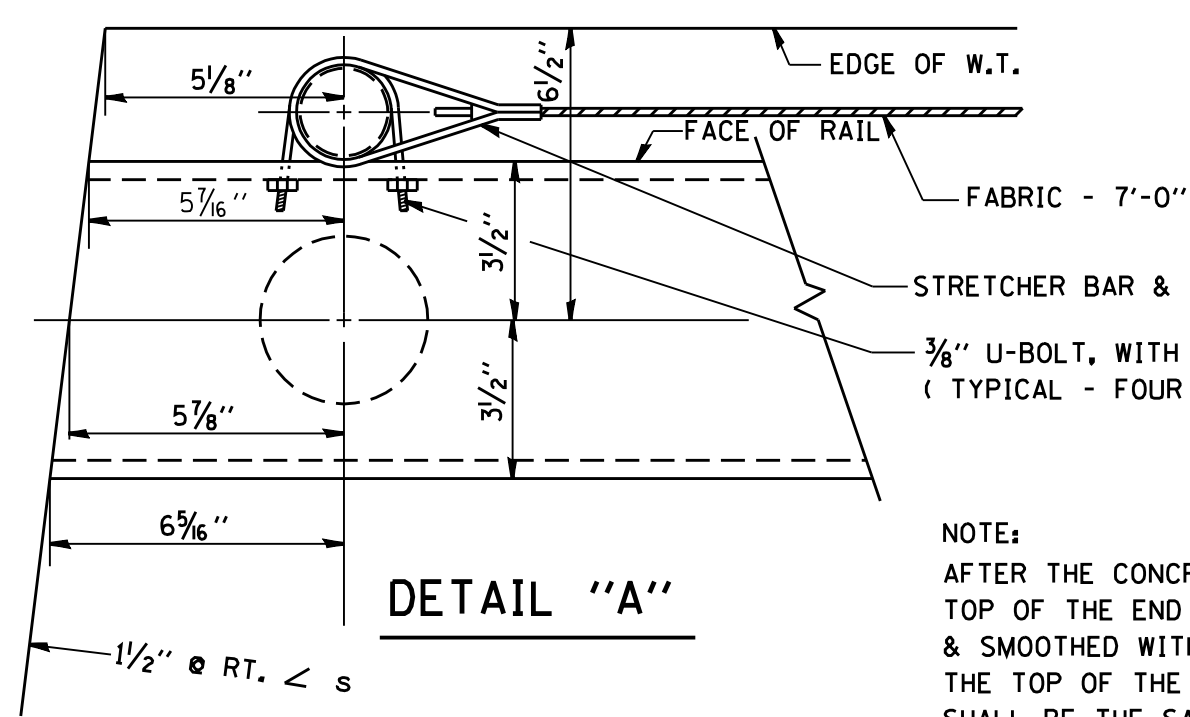
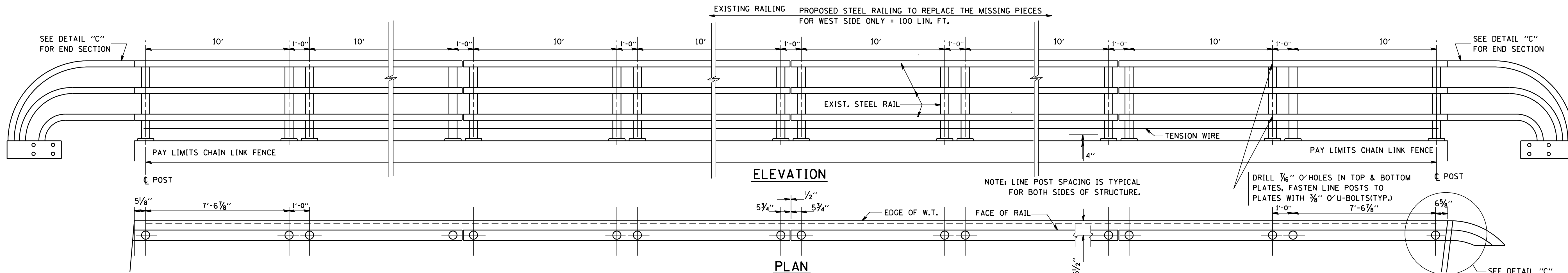
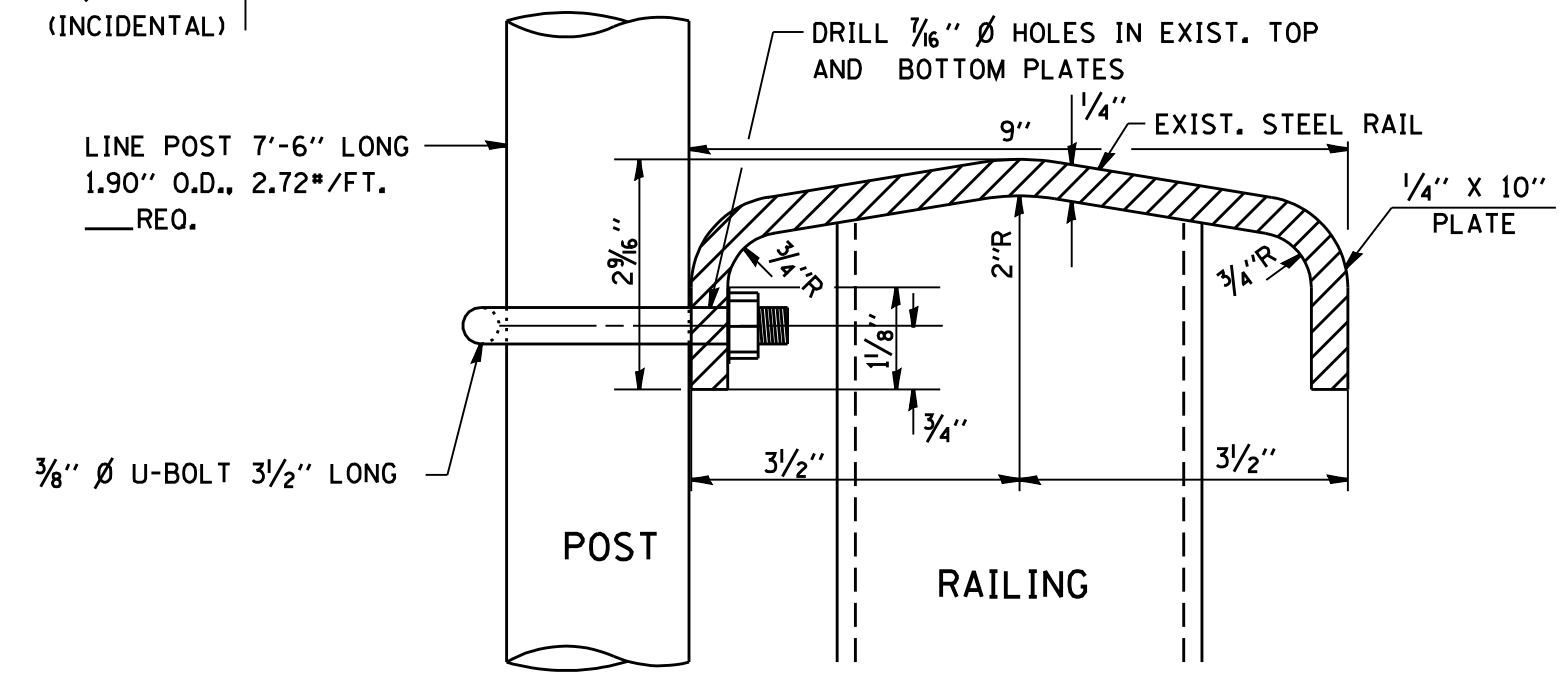


DETAILS: CHAIN LINK FENCE, SPECIAL



NOTE: SEAL PERIMETER OF PLATE TO CONCRETE WITH TWO COMPONENT NONSTAINING GRAY SEALING COMPOUND WITH PLYSULFIDE LIQUID POLYMERS, GUN GRADE WITH PRIMER. (INCIDENTAL)



DETAIL OF WELDING PLATE AND POST

FILE NAME = W:\diststd\22x34\bm01.dgn	USER NAME = gaglionobt	DESIGNED -	REVISED - A. HOUSEH 10-29-92	STATE OF ILLINOIS DEPARTMENT OF TRANSPORTATION	STEEL RAILING			F.A. RTE.	SECTION	COUNTY	TOTAL SHEETS	SHEET NO.
		DRAWN -	REVISED - R. RITCHIE 05-02-00									
		CHECKED -	REVISED -									
		DATE -	REVISED -									
				SCALE: NONE			SHEET NO. 1 OF 1 SHEETS			STA. TO STA.		
				BM-01			CONTRACT NO.			FED. ROAD DIST. NO. 1 ILLINOIS FED. AID PROJECT		