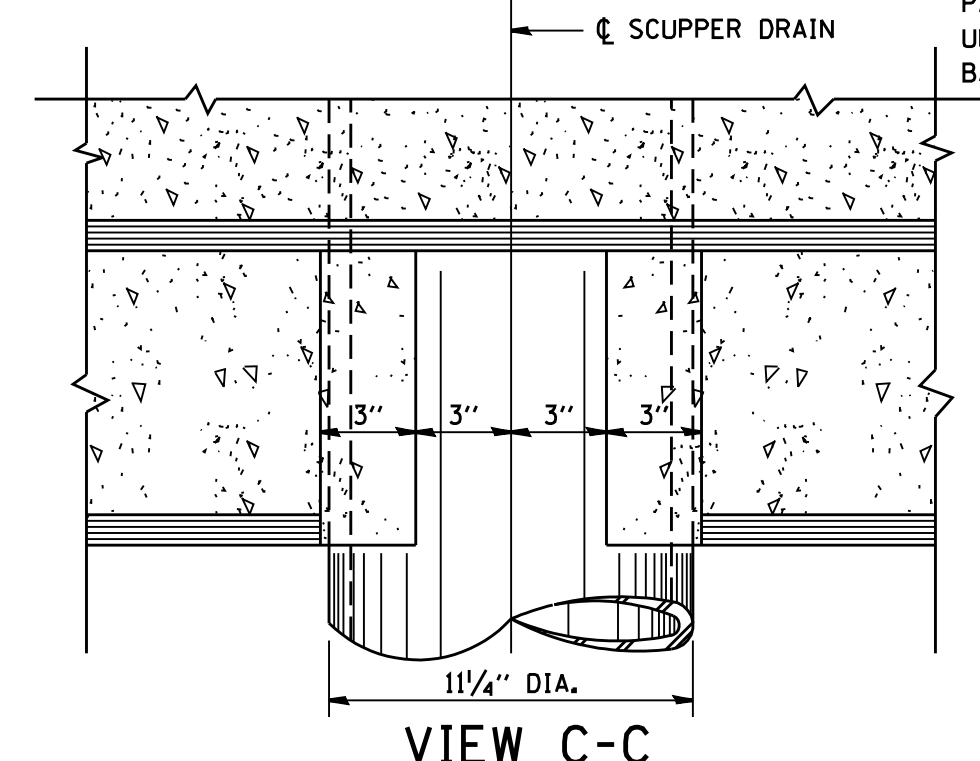
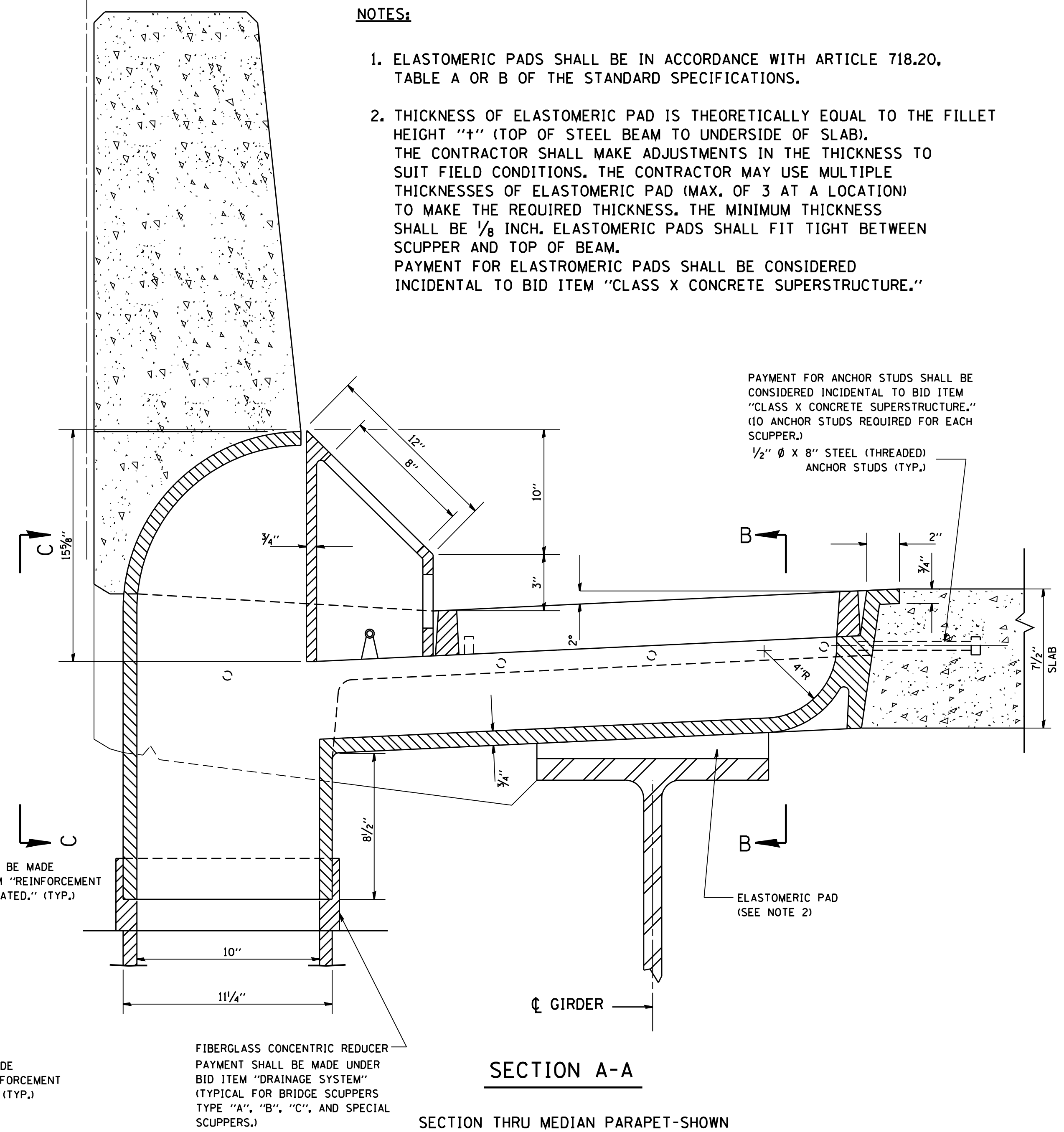
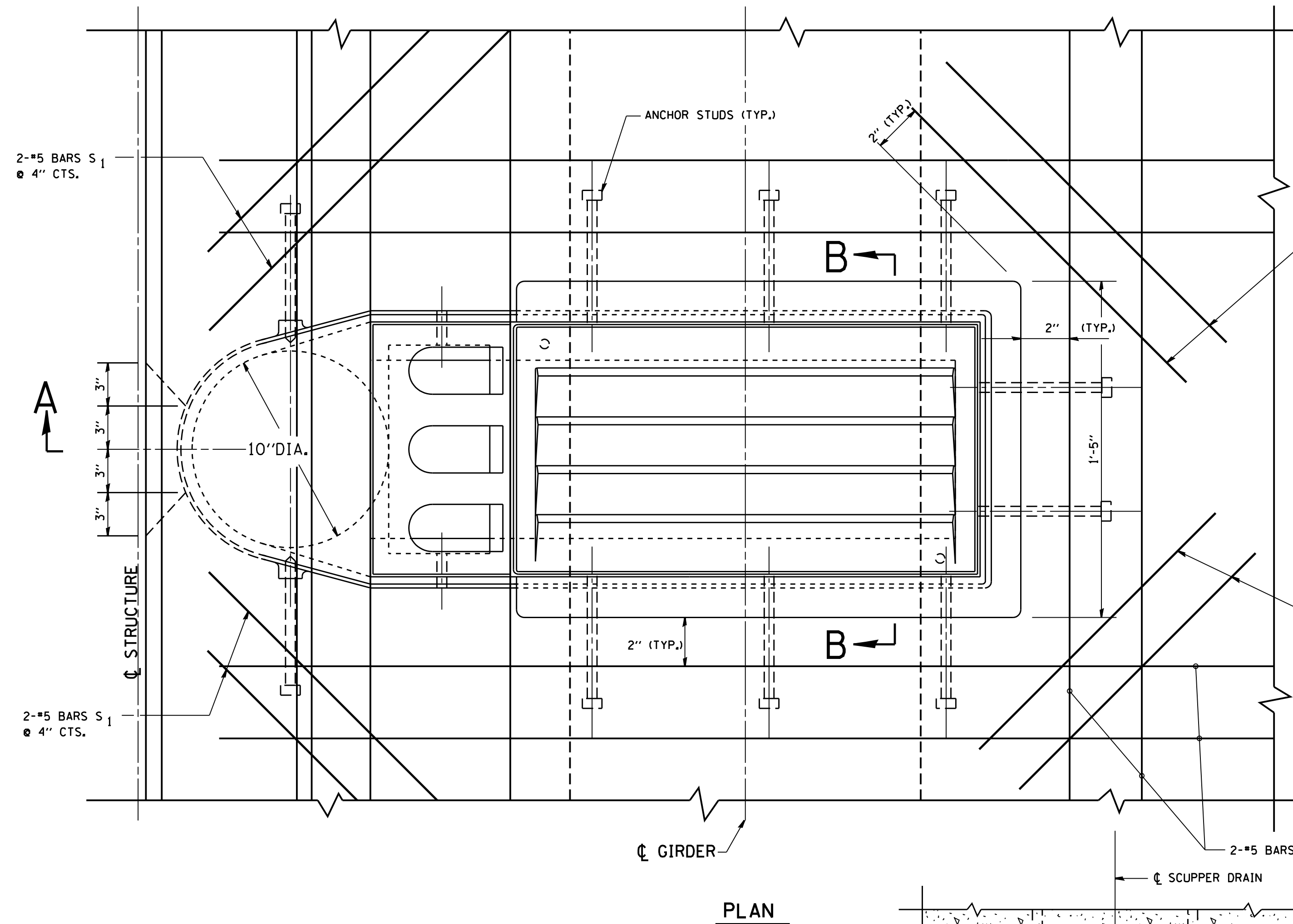


STEEL REINFORCING IN PARAPETS AND DECK SLAB SHOWN ON DECK SLAB AND PARAPET CONTRACT PLANS.

CL STRUCTURE

NOTES:

- ELASTOMERIC PADS SHALL BE IN ACCORDANCE WITH ARTICLE 718.20, TABLE A OR B OF THE STANDARD SPECIFICATIONS.
- THICKNESS OF ELASTOMERIC PAD IS THEORETICALLY EQUAL TO THE FILLET HEIGHT "t" (TOP OF STEEL BEAM TO UNDERSIDE OF SLAB). THE CONTRACTOR SHALL MAKE ADJUSTMENTS IN THE THICKNESS TO SUIT FIELD CONDITIONS. THE CONTRACTOR MAY USE MULTIPLE THICKNESSES OF ELASTOMERIC PAD (MAX. OF 3 AT A LOCATION) TO MAKE THE REQUIRED THICKNESS. THE MINIMUM THICKNESS SHALL BE 1/8 INCH. ELASTOMERIC PADS SHALL FIT TIGHT BETWEEN SCUPPER AND TOP OF BEAM. PAYMENT FOR ELASTOMERIC PADS SHALL BE CONSIDERED INCIDENTAL TO BID ITEM "CLASS X CONCRETE SUPERSTRUCTURE."



REINFORCEMENT BAR SCHEDULE

MARK	NO.	SIZE	LENGTH	SHAPE
S ₁ (E)	8	#5	2'-0"	—
S ₂ (E)	6	#5	5'-0"	—

FILE NAME = W:\diststd\22x34\es04.dgn

USER NAME = gegl@nbt
 PLOT SCALE = 50.0000' / IN.
 PLOT DATE = 1/4/2008

DESIGNED -
 DRAWN -
 CHECKED -
 DATE -

REVISED - M. REZNICEK 10-01-91
 REVISED -
 REVISED -
 REVISED -

**STATE OF ILLINOIS
 DEPARTMENT OF TRANSPORTATION**

**EXPRESSWAY UNIT DETAIL
 BRIDGE SCUPPER - TYPE "A" ASSEMBLY**

SCALE: NONE SHEET NO. 1 OF 1 SHEETS STA. TO STA.

F.A. RTE.	SECTION	COUNTY	TOTAL SHEETS	SHEET NO.
	CS-04			
CONTRACT NO.				
FED. ROAD DIST. NO. 1 ILLINOIS FED. AID PROJECT				