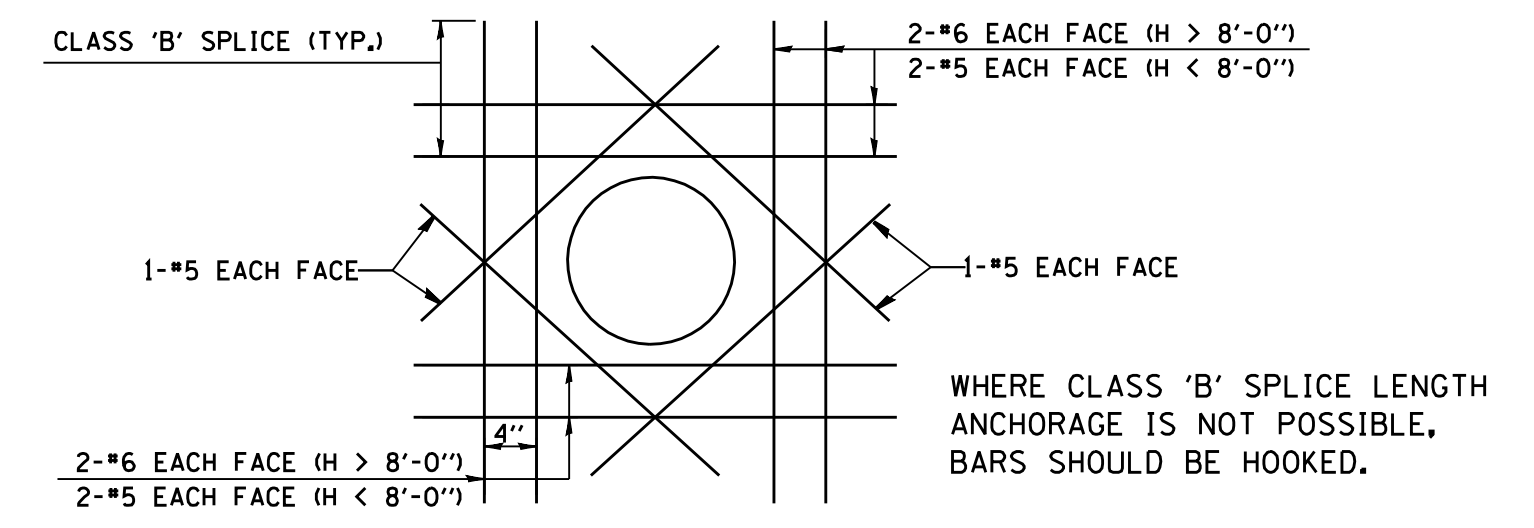


NOTE: FOR DIFFERENTIAL P.G.L. ELEVATION GREATER THAN 1.50' USE 4x3 OR 4x5 CATCH BASIN ON EACH SIDE OF BARRIER WALL. (USE 8x5 OR 8x3 CATCH BASIN UP TO MAX. WALL HEIGHT OF 5'-0".)

DIFFERENTIAL P.G.L. SIDE ELEVATION



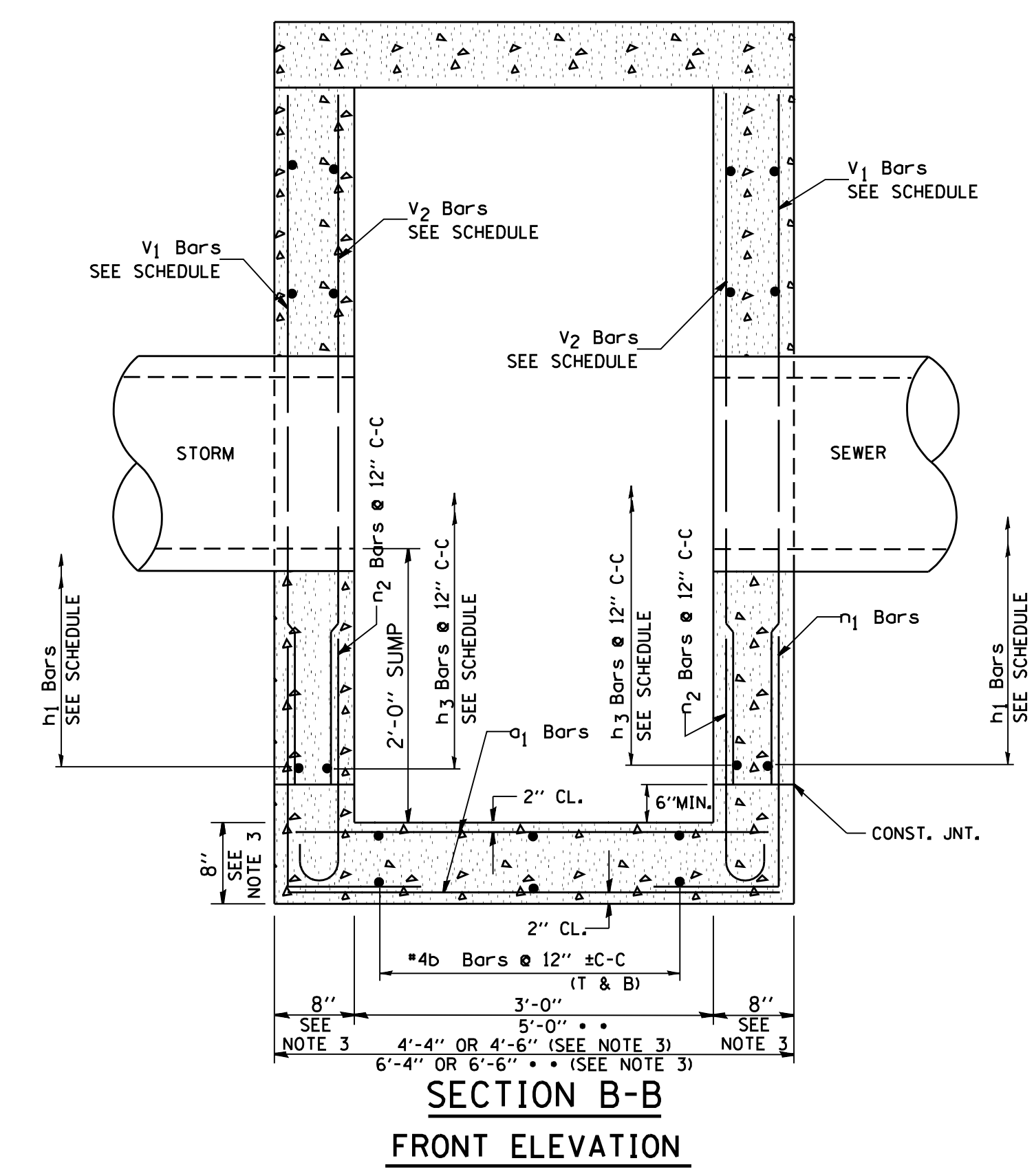
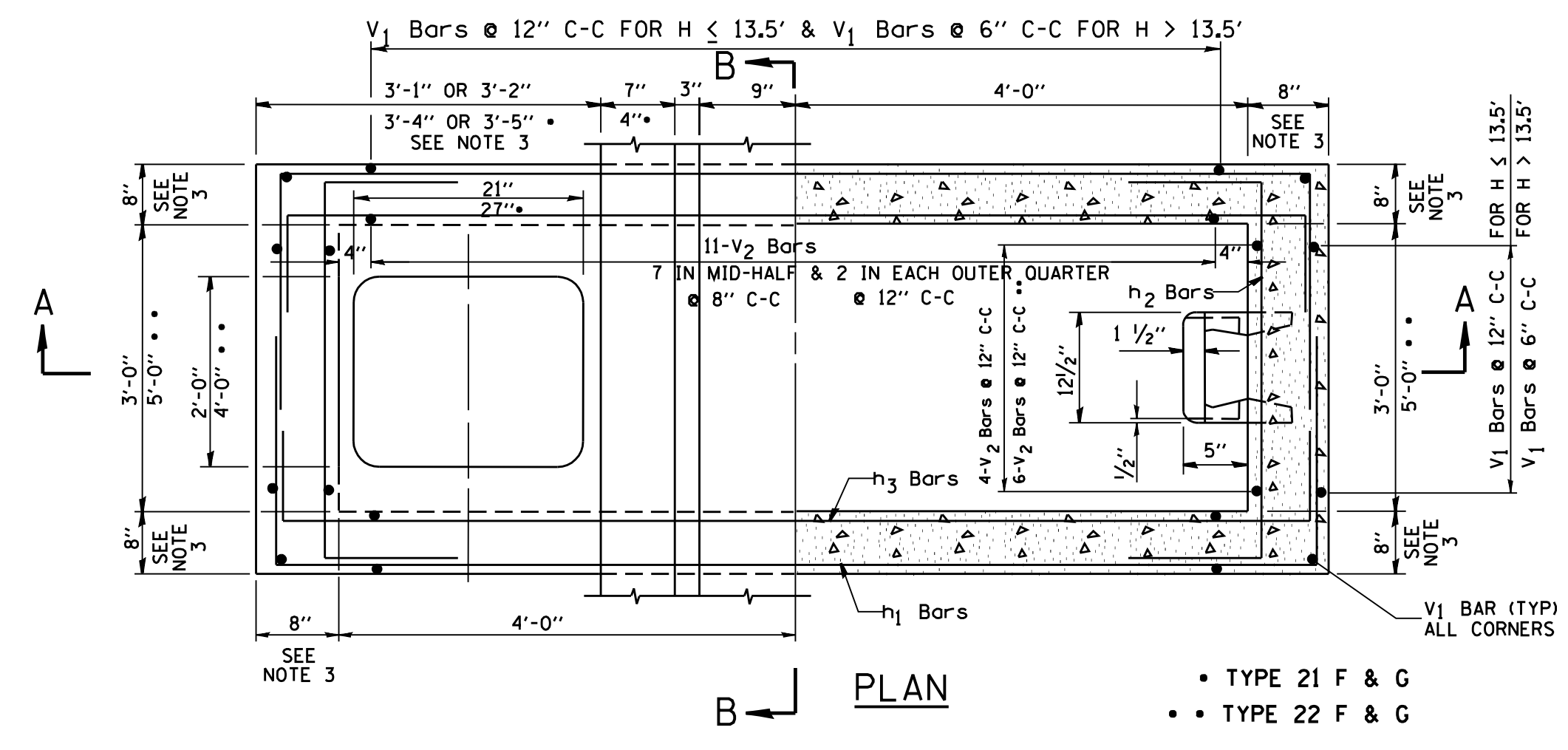
TYPICAL REINFORCEMENT DETAIL AROUND OPENINGS (OPENING ≥ 12")

- NOTES:
1. DRAINAGE STRUCTURES SHALL CONFORM TO I.D.O.T. STANDARD 2384 EXCEPT AS NOTED.
 2. STEPS SHALL BE INCLUDED IN ALL STRUCTURES.
 3. WHEN $H \geq 16'-0"$, THE THICKNESS OF WALLS AND BASE SLAB SHALL BE INCREASED TO 9".
 4. ALL STORM SEWER OPENINGS WILL BE CENTERED ON FACE OF WALL THAT PIPE IS ENTERING.
 5. FOR LOCATIONS AND ELEVATIONS FOR ALL STORM SEWER CONNECTIONS REFER TO PLAN SCHEDULES.
 6. THE CONTRACTOR WILL BE REQUIRED TO PROVIDE SHOP DRAWINGS FOR PIPE OPENINGS FOR PIPES ENTERING AT OTHER THAN 90°. FOR BASIS OF PAYMENT REFER TO SPECIAL PROVISIONS.

CATCH BASIN 8x5 (TYPE 22 F & G)
CATCH BASIN 8x3 (TYPE 20 F & G)

SECTION A-A
SIDE ELEVATION

CATCH BASIN 8x3
(TYPE 21 F & G)



SECTION B-B
FRONT ELEVATION

FILE NAME = W:\dststd\22x34\cs10.dgn

USER NAME = gaglanobt
PLOT SCALE = 50.0000' / IN.
PLOT DATE = 1/4/2008

DESIGNED -
DRAWN -
CHECKED -
DATE -

REVISED - 07-08-04
REVISED -
REVISED -
REVISED -

STATE OF ILLINOIS
DEPARTMENT OF TRANSPORTATION

DRAINAGE STRUCTURES CATCH BASINS 8x3 & 8x5
(FOR DEPTHS WHERE H > 8'-0")

SCALE: NONE SHEET NO. 1 OF 2 SHEETS STA. TO STA.

F.A. RTE.	SECTION	COUNTY	TOTAL SHEETS	SHEET NO.
	CS-10			
FED. ROAD DIST. NO. 1 ILLINOIS		CONTRACT NO.		
FED. AID PROJECT				