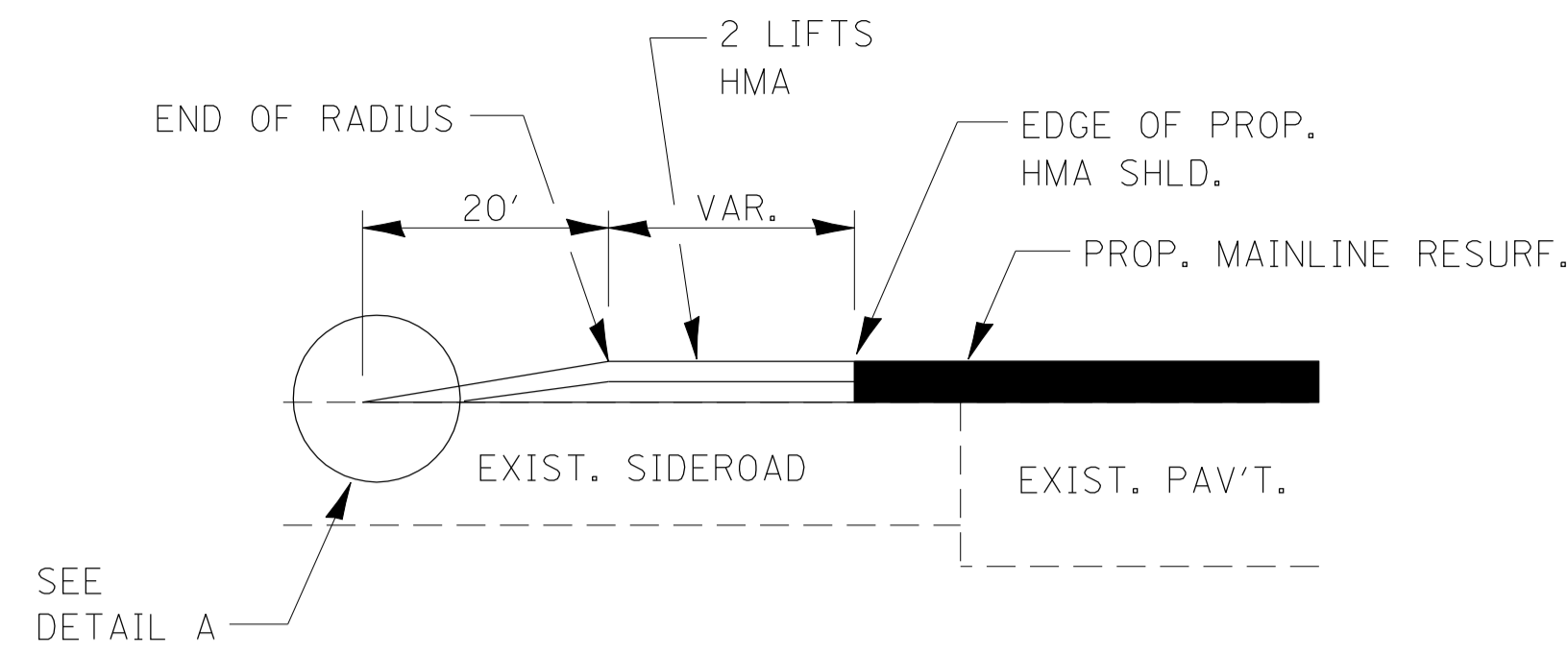
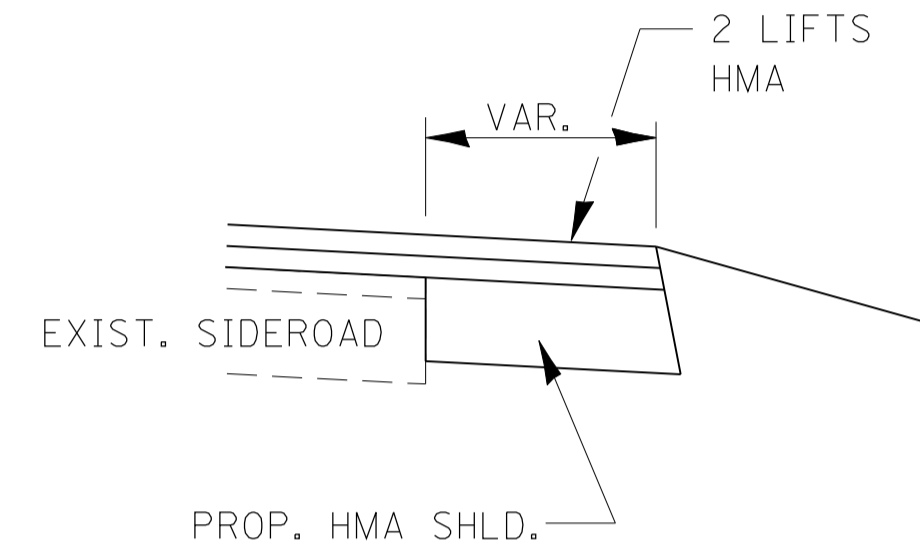


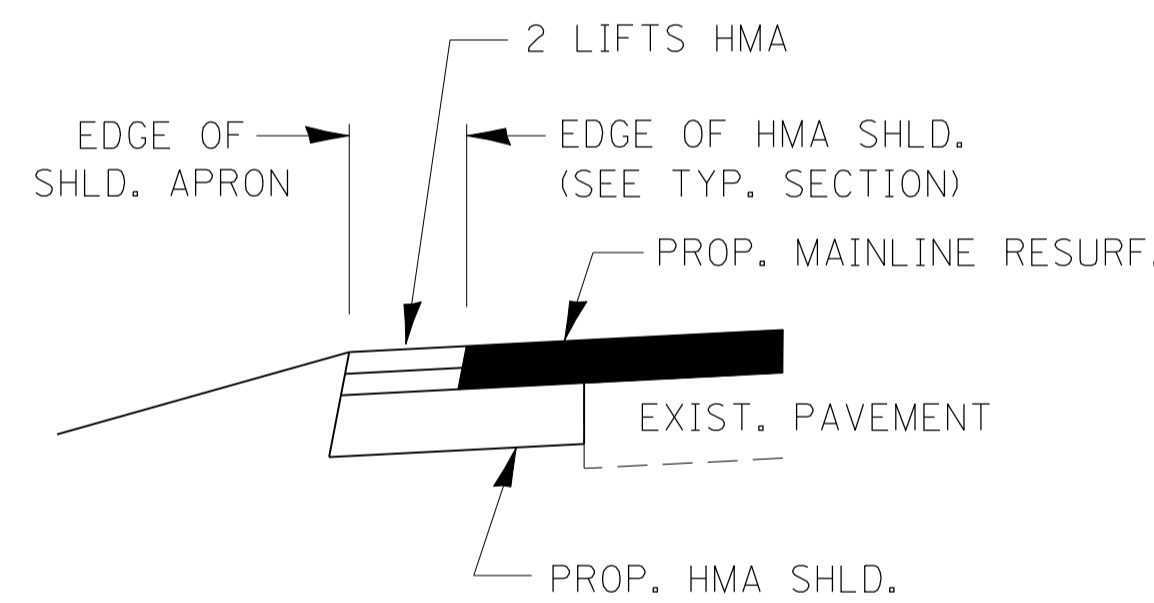
SIDEROAD DETAIL



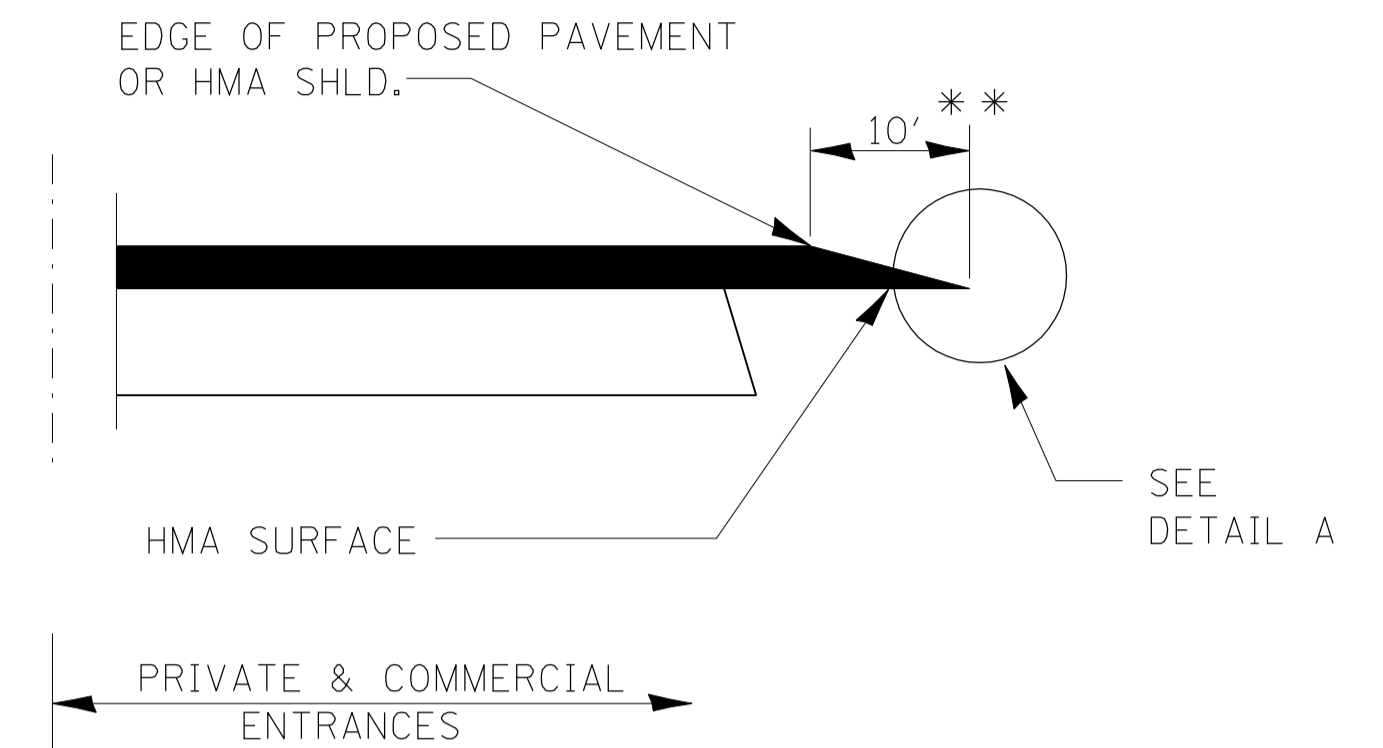
SECTION B-B



SECTION C-C

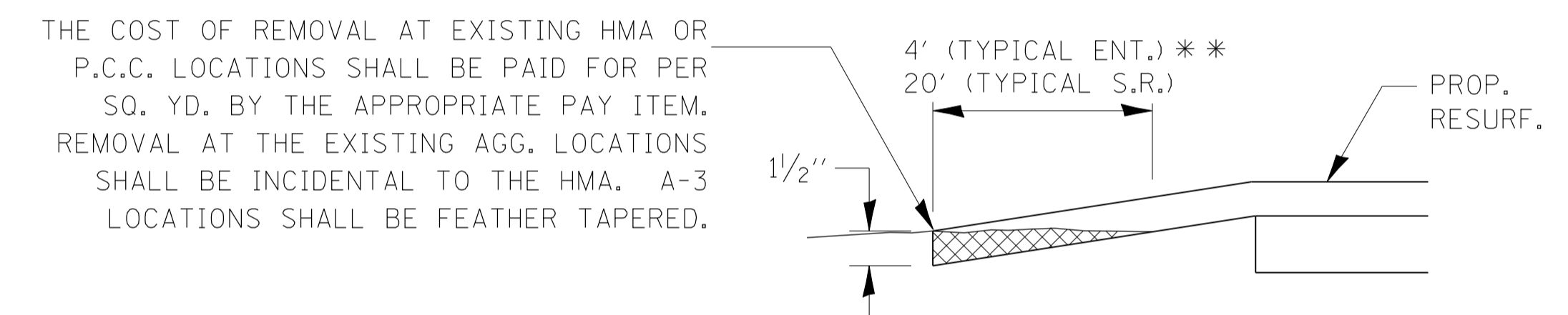


SECTION D-D



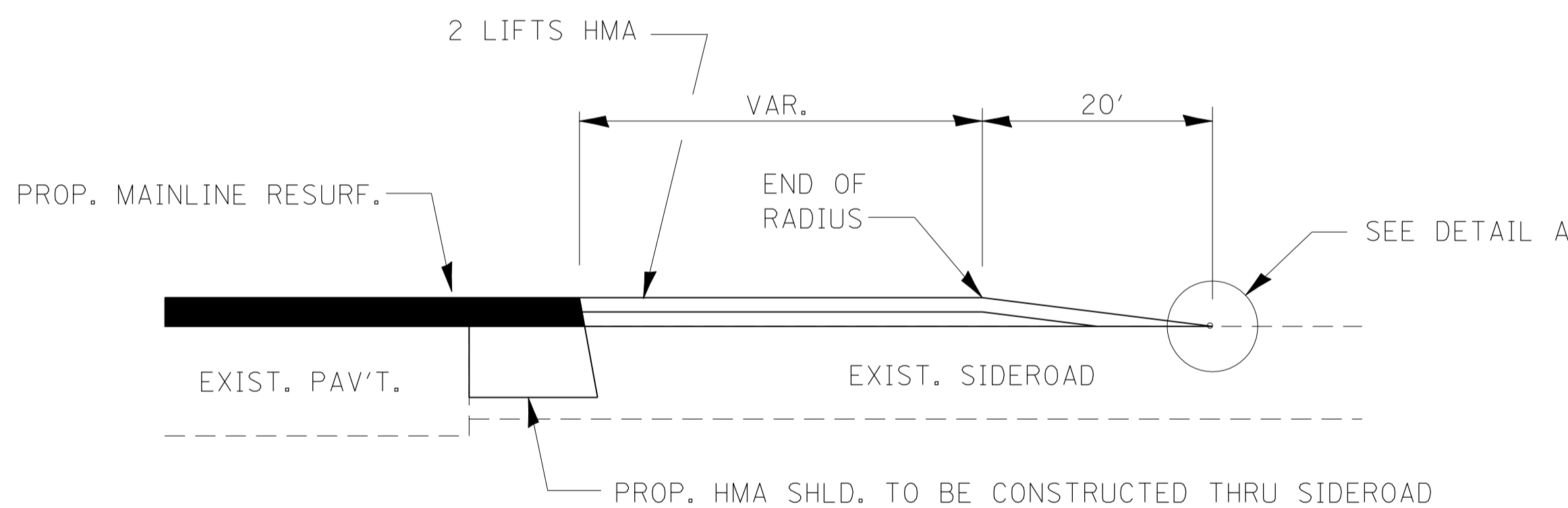
SECTION A-A

DETAILS AT ENTRANCES

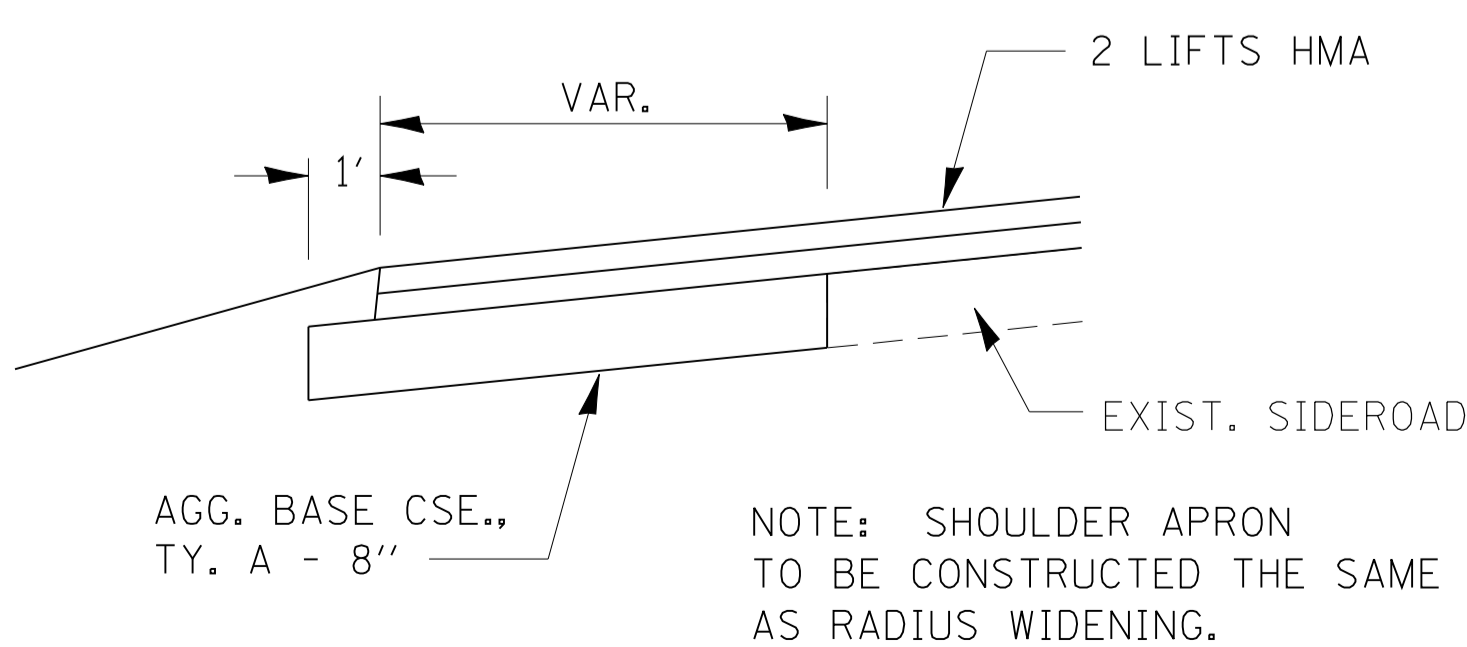


DETAIL A

** PROPOSED HMA RESURFACING AT PUBLIC EDUCATIONAL FACILITY ENTRANCES SHALL BE EXTENDED TO THE RIGHT-OF-WAY LIMITS.



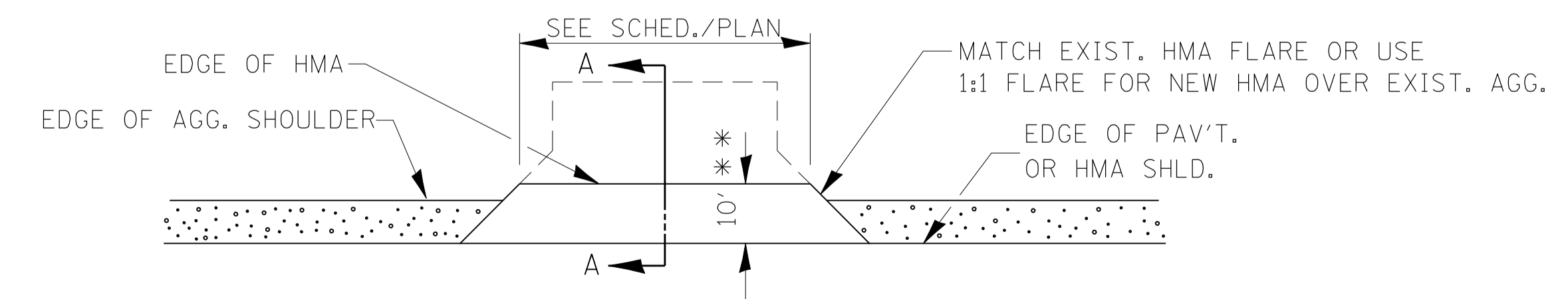
SECTION E-E



SECTION F-F

DESIGNER NOTES:

- 1. THIS IS FOR USE ON RURAL RESURFACINGS WHEN SIDEROAD RADII ARE TO BE RECONSTRUCTED.**
- 2. THE ADEQUACY OF SIDEROADS SHALL BE VERIFIED IN THE FIELD. SIDEROAD RECONSTRUCTION MAY BE REQUIRED.**
- 3. INCREASING THE HMA SHOULDER THICKNESS MAY BE REQUIRED AT HIGH VOLUME SIDEROADS.**
- 4. ALL ENTRANCE AND SIDEROAD WIDTHS, EXISTING MATERIAL TYPE, AND QUANTITIES MUST BE SHOWN IN THE SCHEDULE OR ON THE PLAN VIEW SHEETS.**



PLAN AT PRIVATE & COMMERCIAL ENTRANCES

(DO NOT RESURFACE FIELD ENTRANCES)