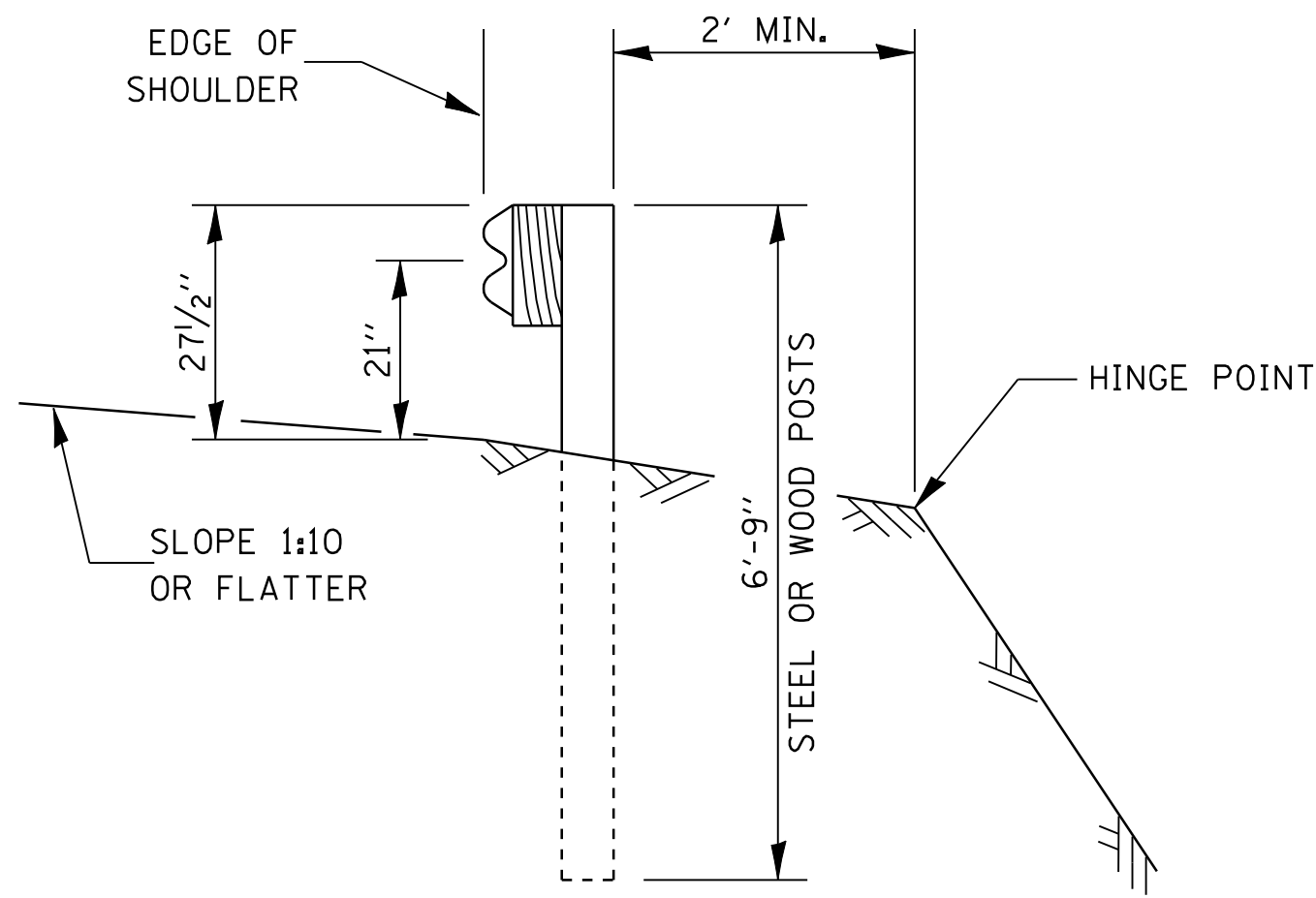


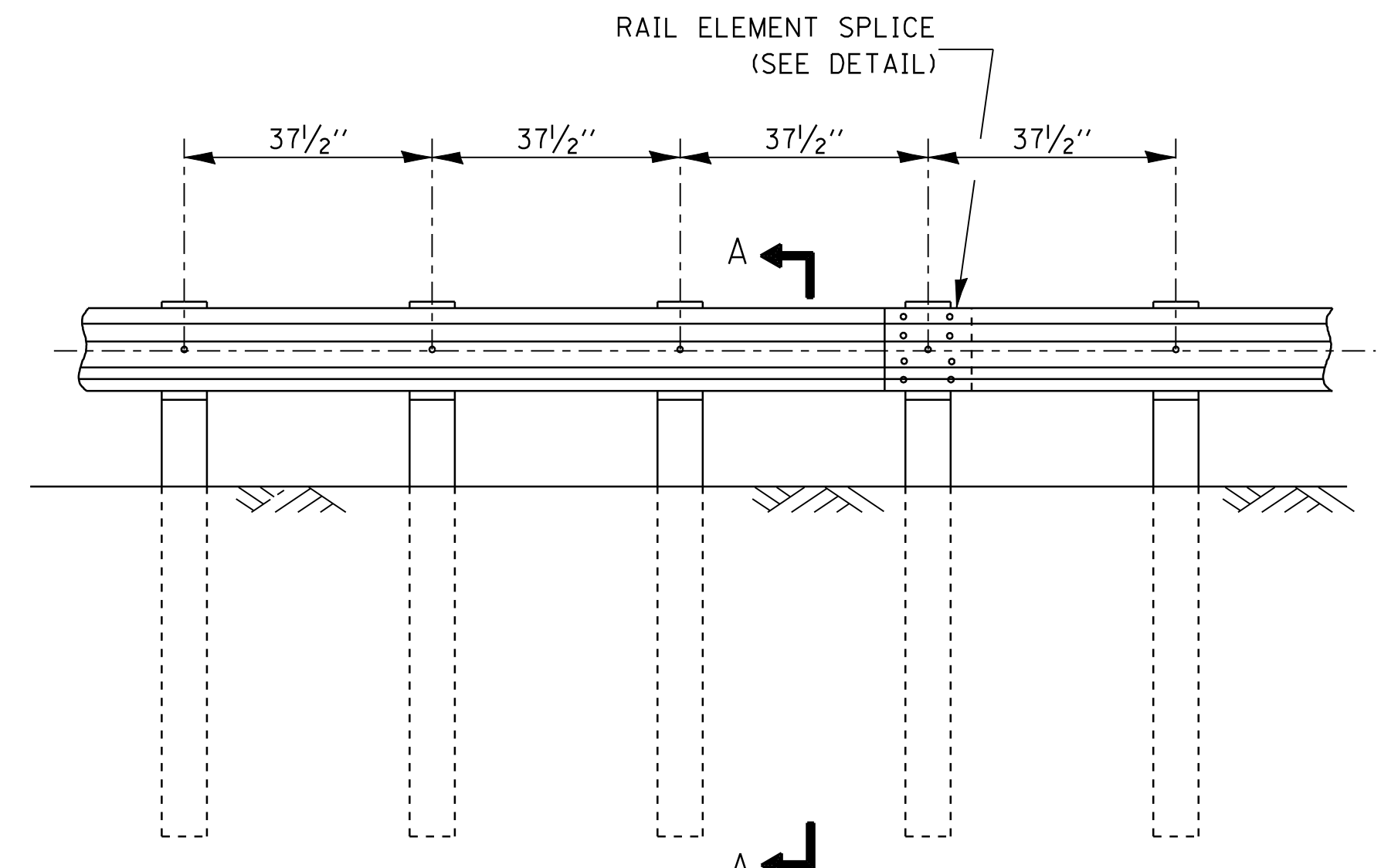
ELEVATION

TYPE A

6'-3" TYPICAL POST SPACING



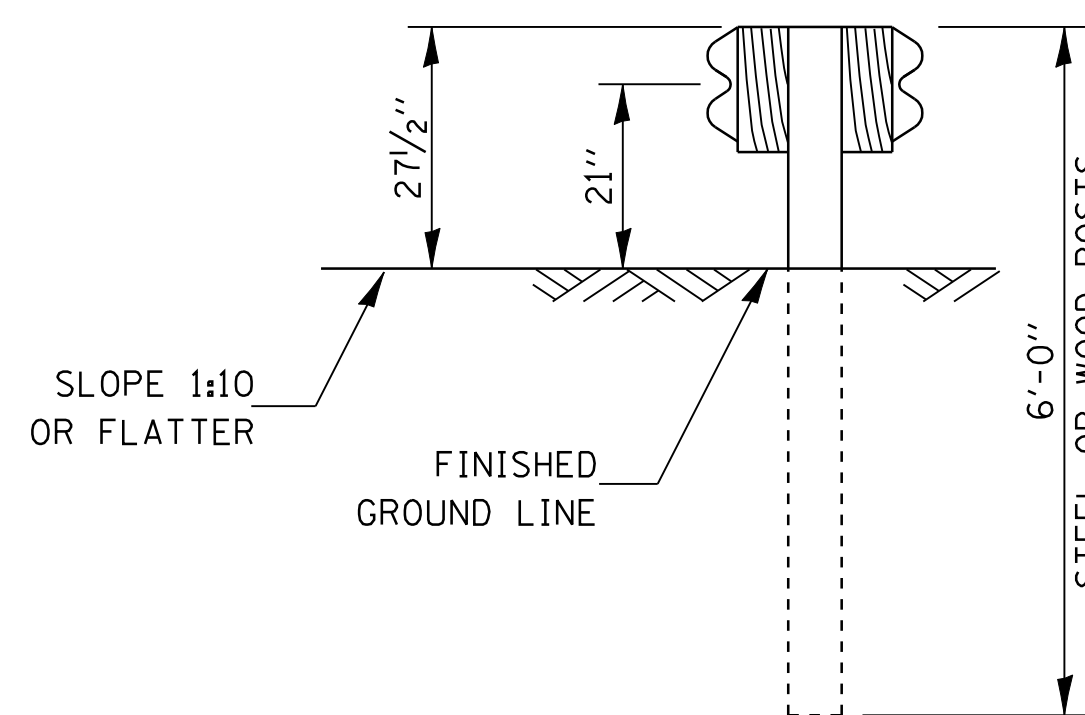
SECTION A-A



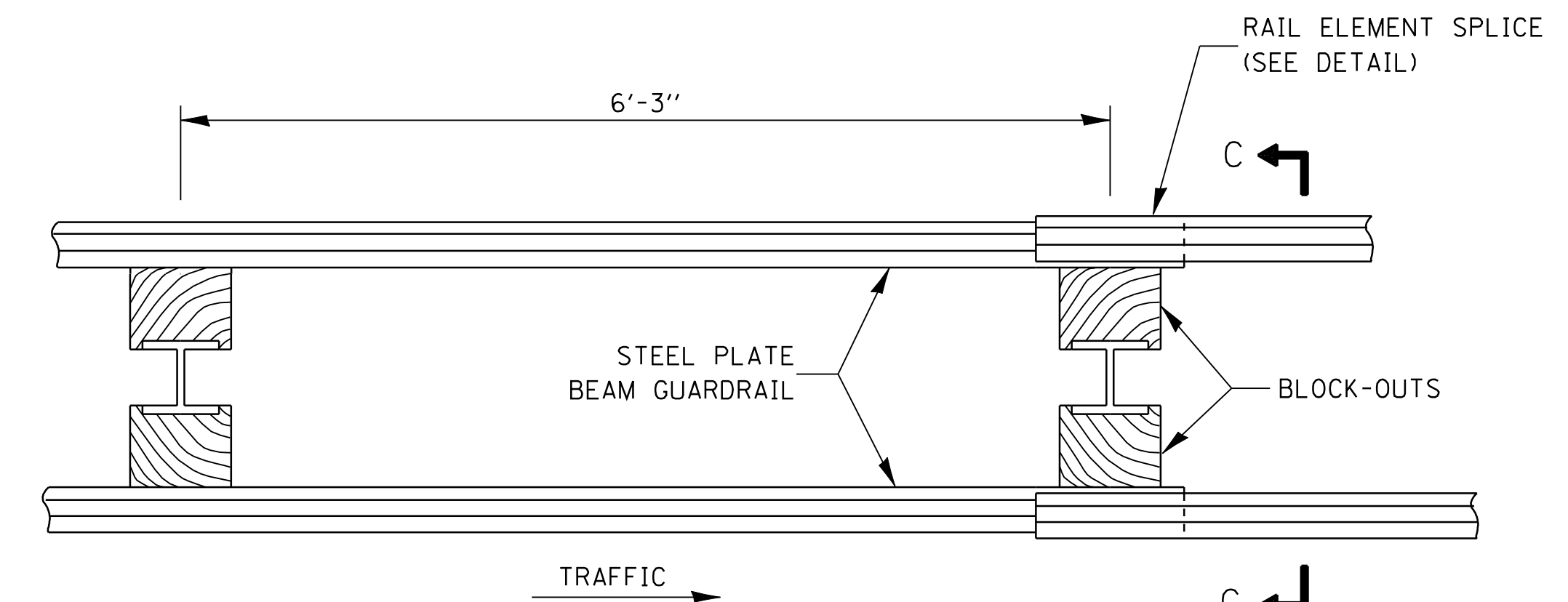
ELEVATION

TYPE B

37 1/2" CLOSED POST SPACING



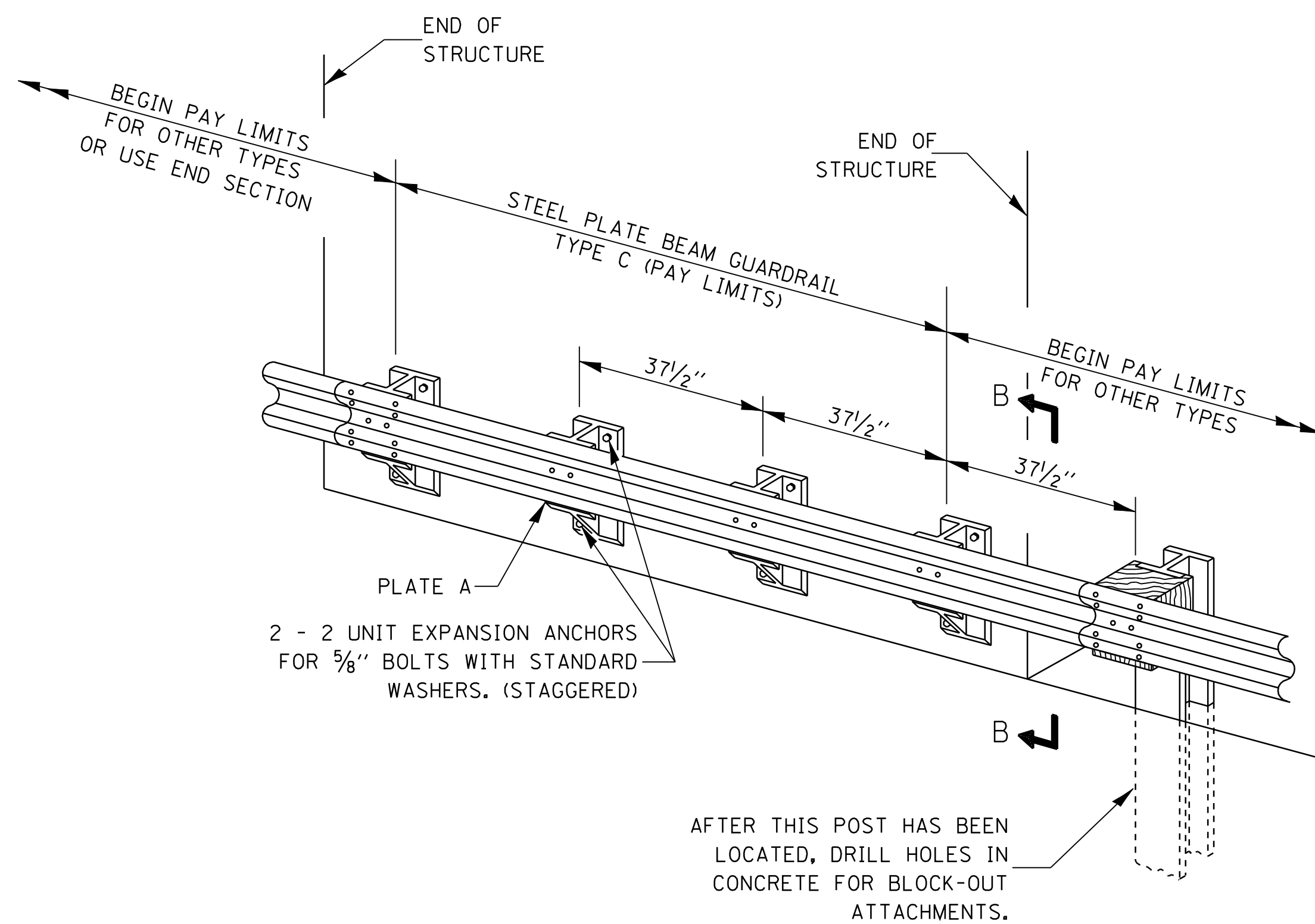
SECTION C-C



PLAN

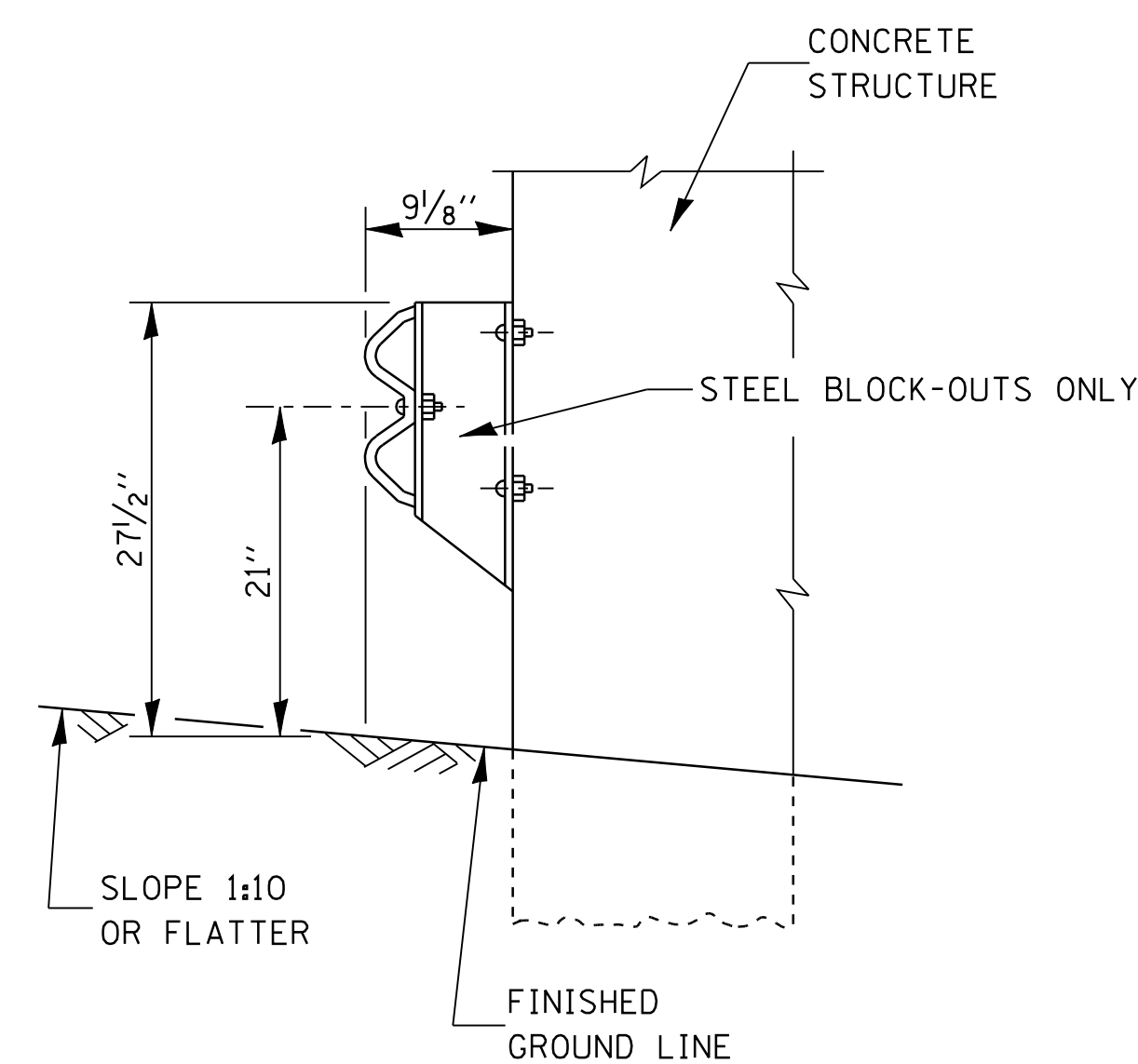
TYPE D

DOUBLE STEEL PLARE BEAM GUARDRAIL
6'-3" TYPICAL POST SPACING



TYPE C

37 1/2" BLOCK-OUT SPACING



SECTION B-B

GENERAL NOTES

ALL SLOPE RATIOS ARE EXPRESSED AS UNITS OF VERTICAL DISPLACEMENT TO UNITS OF HORIZONTAL DISPLACEMENT (V:H).

THE EXISTING STEEL POSTS MAY BE DRILLED TO MATCH THE BOLT PATTERN SHOWN HEREIN FOR THE WOOD BLOCK-OUTS, OR A NEW STEEL POST SHALL BE PROVIDED.

THIS DETAIL IS APPLICABLE TO THE GUARDRAIL SYSTEM USED PRIOR TO JANUARY 1, 2007. FOR DETAILS ON THE MIDWEST GUARDRAIL SYSTEM SEE STANDARD 630001.

FILE NAME =	USER NAME = corcoranlm	DESIGNED -	REVISED -
c:\pwork\pwork\DOT\CORCORANLM\dms41560\800699.dgn		DRAWN -	REVISED -
		PLOT SCALE = 47.727' / IN.	CHECKED -
		PLOT DATE = Jul 28, 2009 - 09:51:53 AM	REVISED -