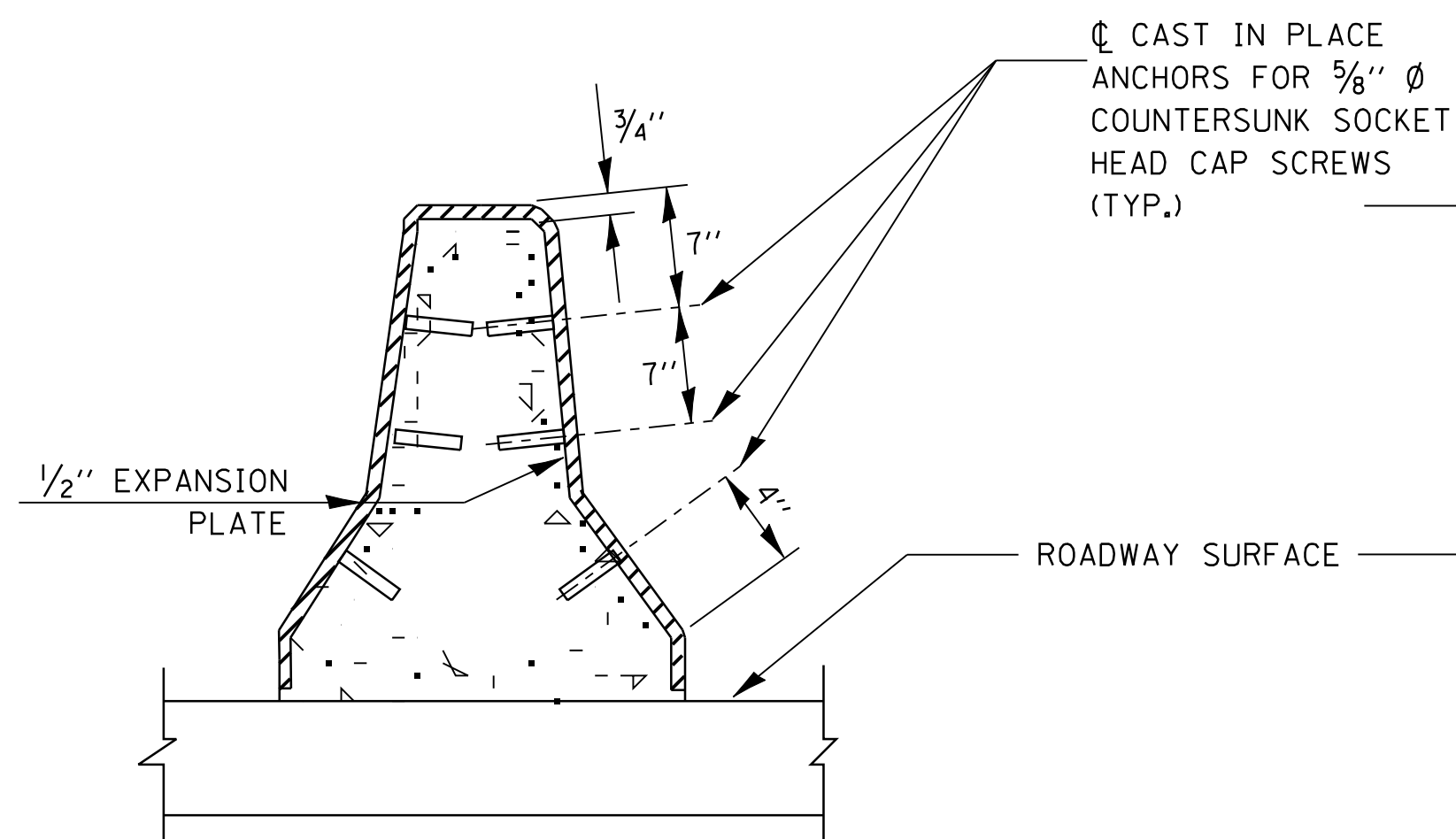
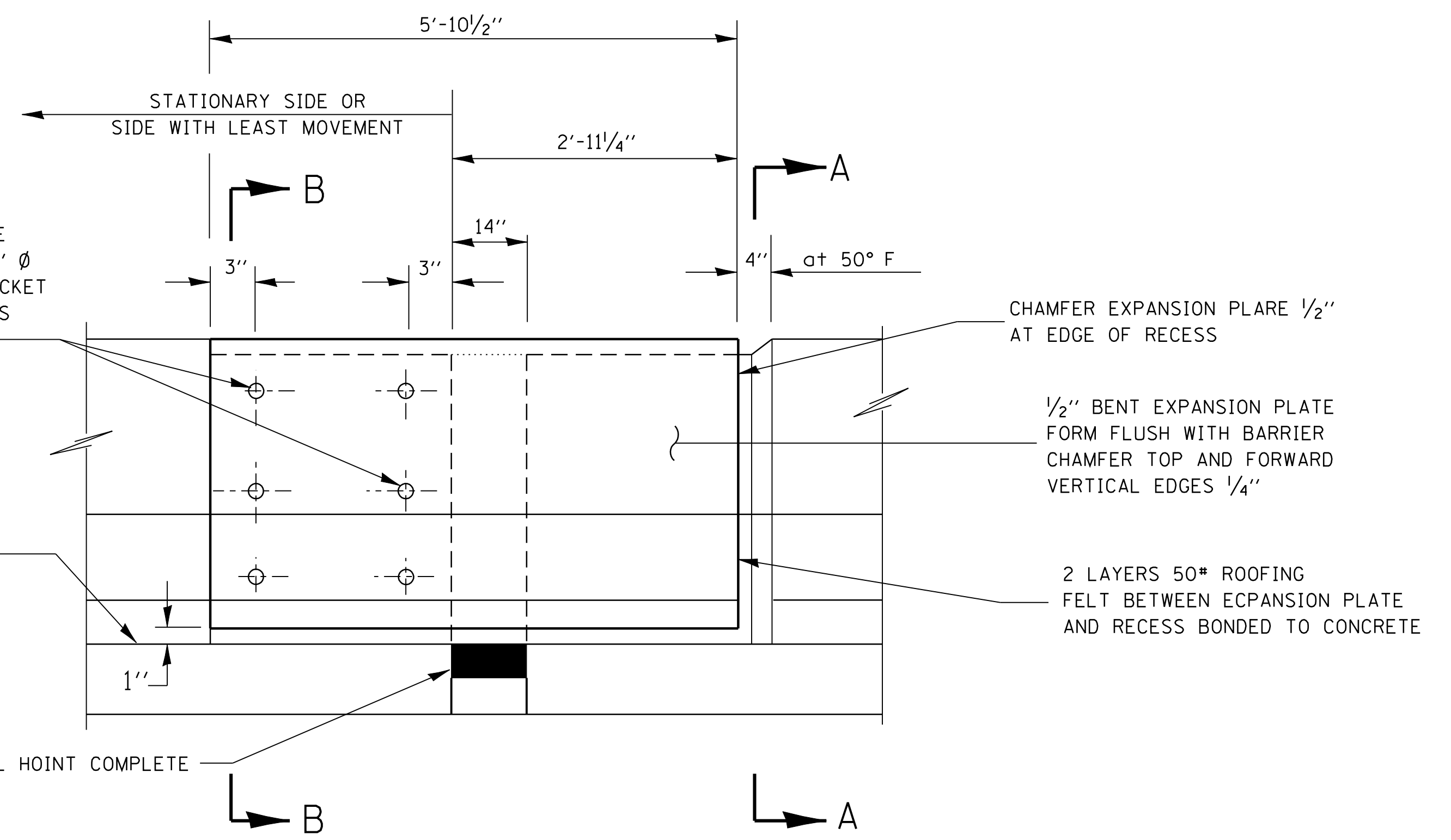


SECTION A - A



SECTION B - B



ELEVATION

NOTES

IT SHALL BE THE CONTRACTORS RESPONSIBILITY TO COORDINATE THE APPROVED WIDE FLANGE BEAM TERMINAL JOINT WITH THE END EXPANSION PLATE DETAIL SHOWN.

ALL EXPANSION PLATES SHALL BE AASHTO M183 AND SHOP PAINTED WITH ZINC SILICATE AND VINYL PAINT SYSTEM.

COST OF EXPANSION PLATES TO BE INCLUDED IN THE COST OF THE WIDE FLANGE BEAM TERMINAL JOINT COMPLETE.

SEE STANDARD 637001 AND PLANS FOR ADDITIONAL CONCRETE BARRIER DETAILS.

FILE NAME =	USER NAME = corcoranlm	DESIGNED -	REVISED -
ct:\pw_work\PWIDOT\CORCORANLM\dms41560\800699.dgn		DRAWN -	REVISED -
		CHECKED -	REVISED -
		DATE -	REVISED -

**STATE OF ILLINOIS
DEPARTMENT OF TRANSPORTATION**

CONCRETE BARRIER EXPANSION PLATE DETAIL			
SCALE:	SHEET NO. OF SHEETS	STA.	TO STA.

F.A. RTE.	SECTION	COUNTY	TOTAL SHEETS	SHEET NO.
FED. ROAD DIST. NO.				ILLINOIS FED. AID PROJECT
CONTRACT NO.				