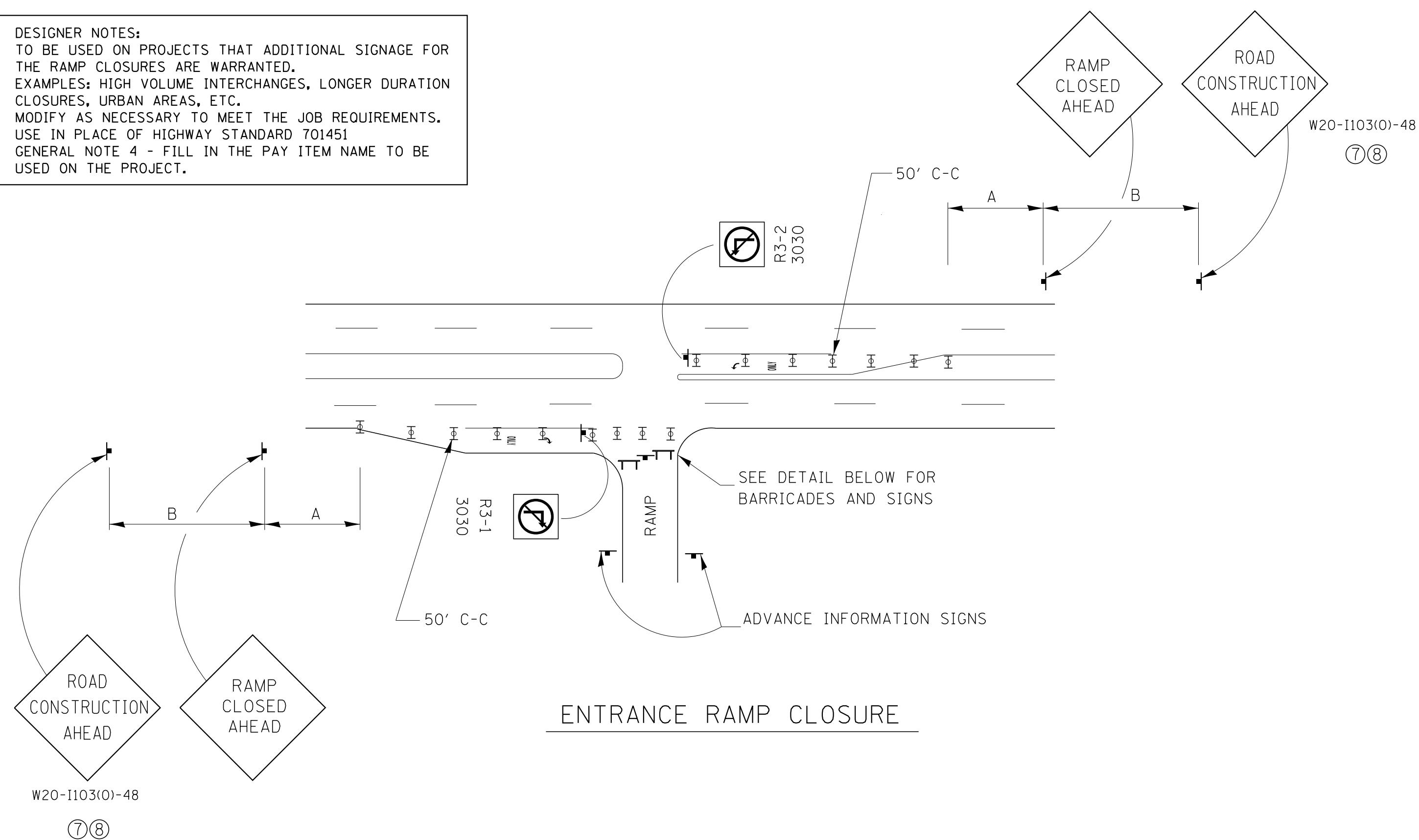


DESIGNER NOTES:
 TO BE USED ON PROJECTS THAT ADDITIONAL SIGNAGE FOR THE RAMP CLOSURES ARE WARRANTED. EXAMPLES: HIGH VOLUME INTERCHANGES, LONGER DURATION CLOSURES, URBAN AREAS, ETC. MODIFY AS NECESSARY TO MEET THE JOB REQUIREMENTS. USE IN PLACE OF HIGHWAY STANDARD 701451 GENERAL NOTE 4 - FILL IN THE PAY ITEM NAME TO BE USED ON THE PROJECT.

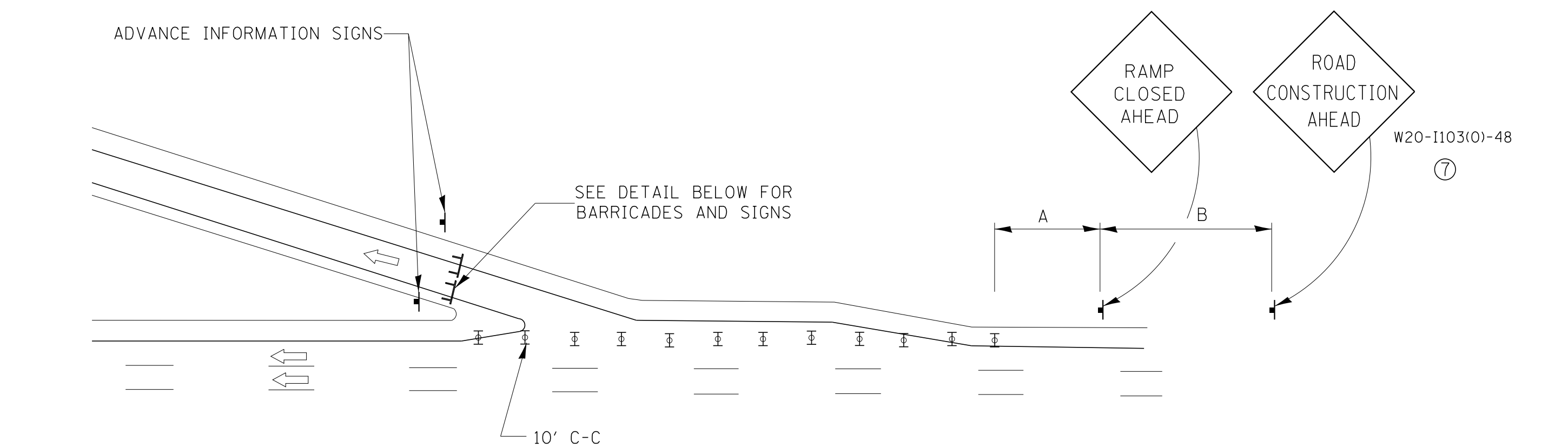


ENTRANCE RAMP CLOSURE

SIGN SPACING TABLE

FACILITY	DISTANCE BETWEEN SIGNS	
	A	B
EXPRESSWAY >24 HOURS	1000'	1500'
EXPRESSWAY ≤24 HOURS	500'	500'
ARTERIAL ≥45 MPH	350'	350'
ARTERIAL <45 MPH	150'	150'

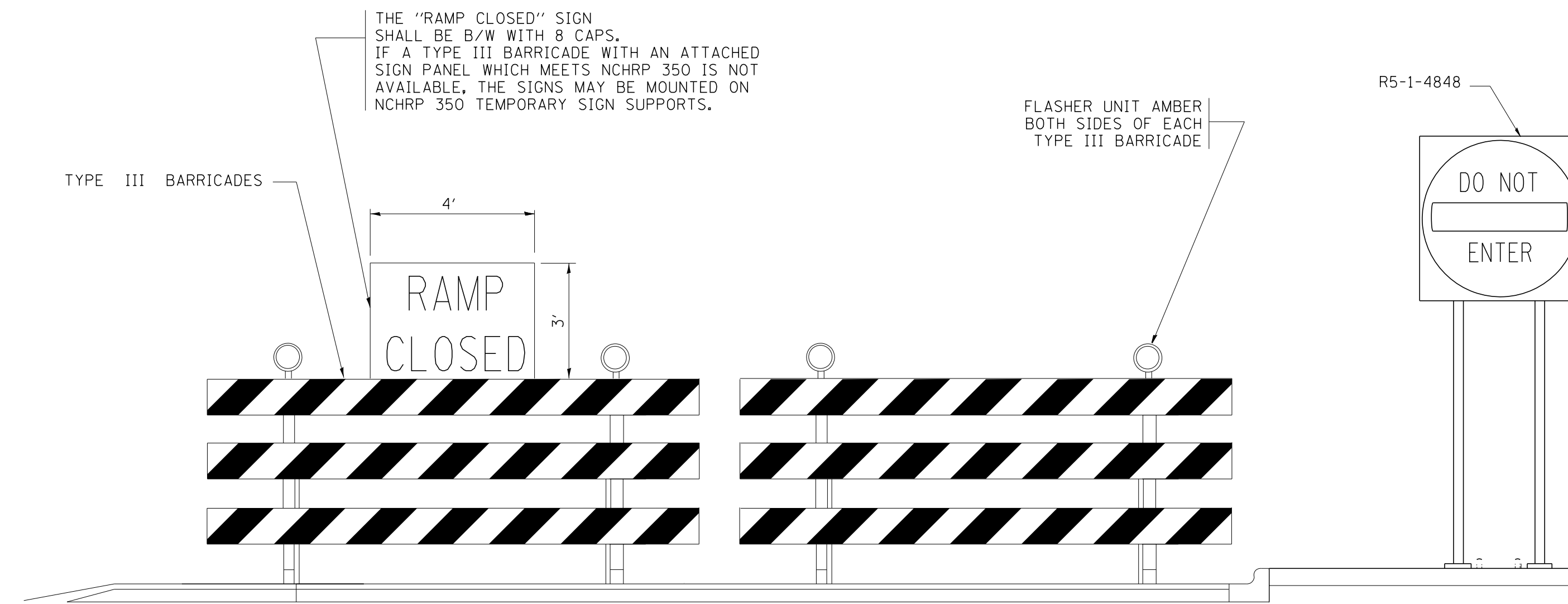
DISTANCES MAY BE SHORTENED DEPENDING UPON THE PROXIMITY OF ADJACENT RAMP OR INTERSECTIONS.



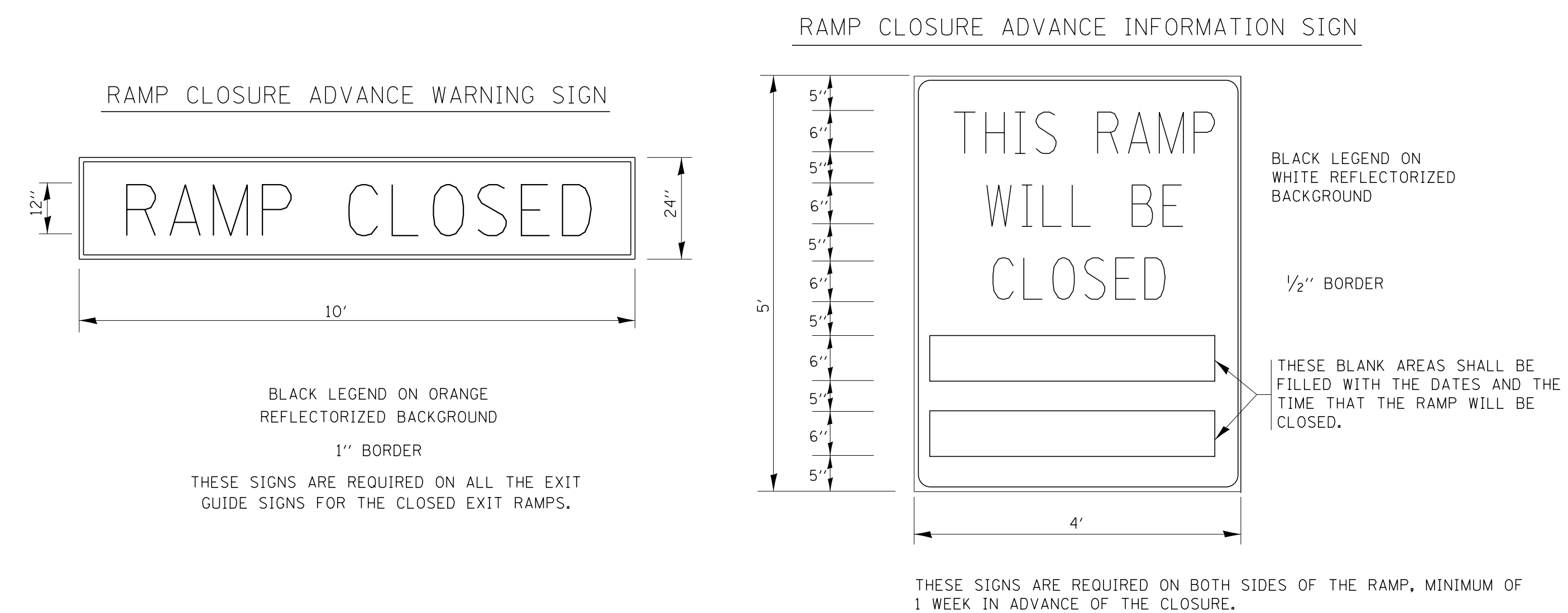
EXIT RAMP CLOSURE

SYMBOLS

- ☒ DRUM WITH STEADY BURN MONO-DIRECTIONAL LIGHT
- ☒ TYPE III BARRICADE WITH FLASHING LIGHT



DETAIL FOR REQUIRED BARRICADES & SIGNS



GENERAL NOTES:

- ① STEADY BURN LIGHTS WILL NOT BE REQUIRED FOR DAY OPERATIONS.
- ② A FLAGGER SHALL BE POSITIONED AT EACH CLOSED RAMP THAT IS OPEN TO CONSTRUCTION VEHICLES.
- ③ ALL ROUTE MARKERS AND SIGN ASSEMBLIES WHICH DIRECT MOTORISTS TO A CLOSED ENTRANCE RAMP SHALL BE COVERED.
- ④ THE SIGNING AND BARRICADING WHICH IS REQUIRED BY THIS DETAIL SHALL BE INCLUDED IN THE COST OF TRAFFIC CONTROL AND PROTECTION (EXPRESSWAYS).
- ⑤ AUTHORIZATION FROM THE DISTRICT'S BUREAU OF OPERATIONS IS REQUIRED FOR ALL RAMP CLOSURES.
- ⑥ THE RAMP CLOSURE ADVANCE INFORMATION SIGNS SHALL BE ERECTED IF THE CLOSURE TIME EXCEEDS TWENTY-FOUR (24) HOURS. ADDITIONAL ADVANCE WARNING SIGNS ON EXIT GUIDE SIGNING WILL BE REQUIRED FOR EXIT RAMP CLOSURES THAT EXCEED TWENTY-FOUR (24) HOURS IN LENGTH.
- ⑦ ROAD CONSTRUCTION AHEAD SIGNS MAY BE OMITTED WHEN THIS DETAIL IS USED IN CONJUNCTION WITH OTHER TRAFFIC CONTROL THAT ALREADY INCLUDES A ROAD CONSTRUCTION AHEAD SIGN.
- ⑧ ARTERIAL ROAD CONSTRUCTION AHEAD SIGNS MAY BE OMITTED ON CLOSURES LESS THAN 24 HOURS IN DURATION.

FILE NAME =	USER NAME = corcoranlm	DESIGNED -	REVISED -
et:\pw\work\p\dot\corcoranlm\dms41560\700799.dgn		DRAWN -	REVISED -
\$MODELNAME\$	PLOT SCALE = 50.000' / in.	CHECKED -	REVISED -
	PLOT DATE = 6/4/2013	DATE -	REVISED -

F.A. RTE.	SECTION	COUNTY	TOTAL SHEETS	SHEET NO.
CONTRACT NO.				
ILLINOIS FED. AID PROJECT				