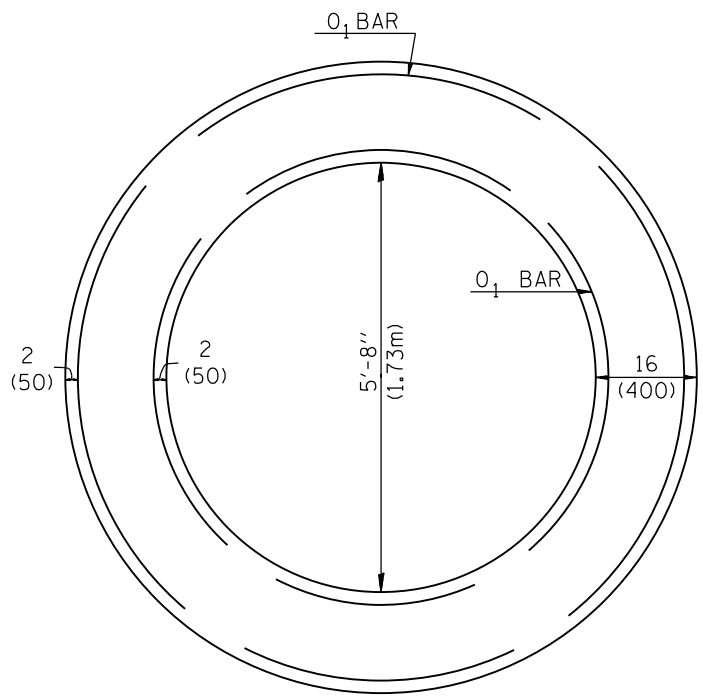
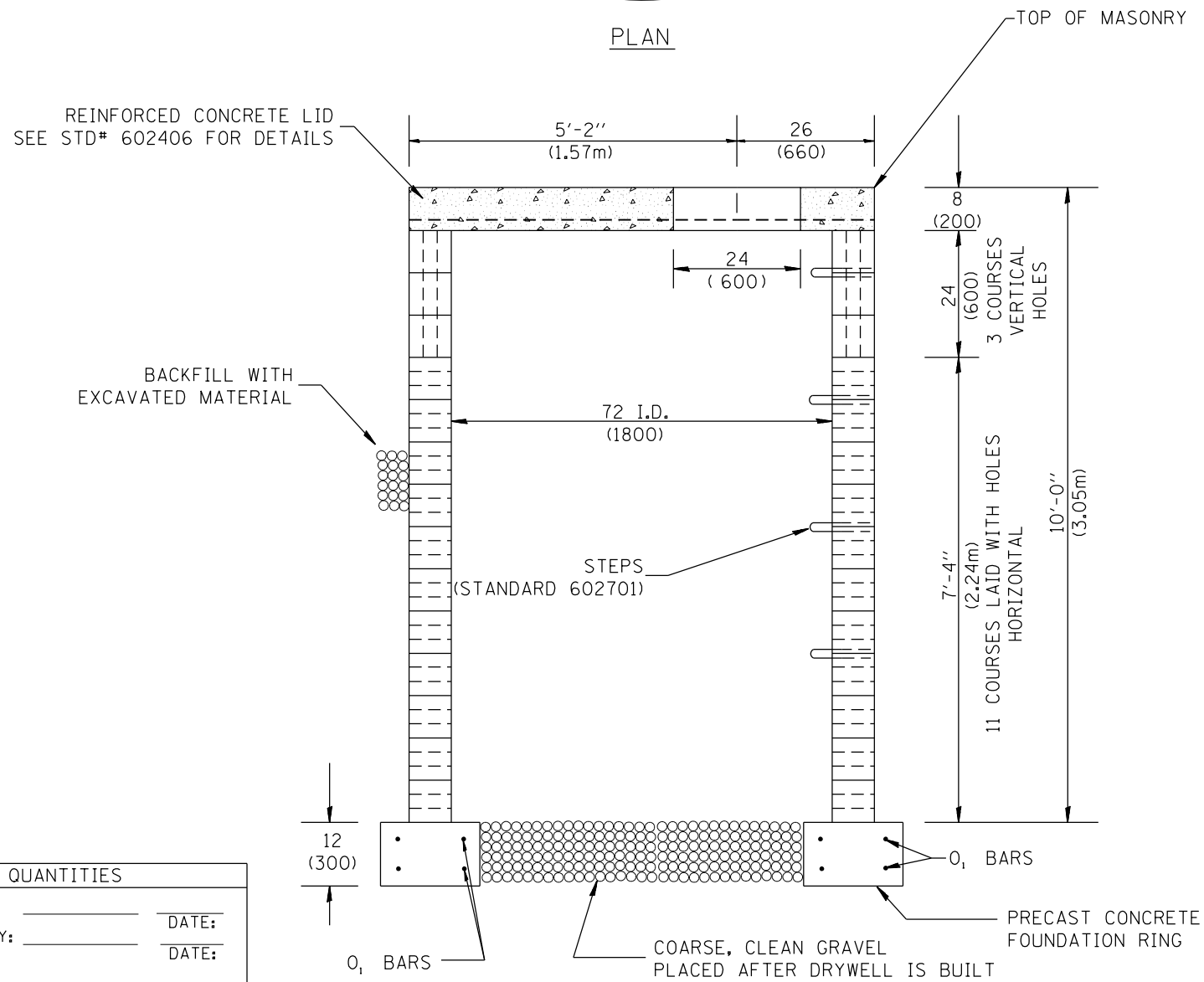


PLAN



PLAN

(SHOWING REINFORCEMENT IN CONCRETE RING FOUNDATION)



ELEVATION

GENERAL NOTES:

- The concrete blocks shall be 3 cell - 8"x8"x16"(200x200x400). The top 3 courses of blocks shall be laid with the holes vertical. All other blocks shall be laid with the holes horizontal. All Joints shall be mortar.
- The outside of the drywell shall be wrapped in a filter fabric conforming to Article 1080.03 of the Standard Specifications using a two (2) foot overlap at seam.
- Drywell to be provided with a TYPE 8 GRATE. (Standard 604036)

BILL OF MATERIALS FOR 1 DRYWELL

CONCRETE BLOCKS	=	196 EA.
FILTER FABRIC	=	26 SQ YD (22m ²)
TYPE 8 GRATE	=	1 EA.
STEPS PER STD# 602701	=	8 EA.
GRAVEL	=	1 CU YD (0.76m ³)
CONCRETE LID PER STD# 602406	=	1 EA.
CONCRETE FOUNDATION RING		
CLASS PC CONCRETE	=	1.1 CU YD (0.8m ³)
2 #4 (#15)'0' BARS LENGTH	=	25' (7.6m) = 35 LBS(24kg)
2 #4 (#15)'0.1' BARS LENGTH	=	19' (5.8m) = 25 LBS(18kg)

DESIGNER NOTES:
 1. INCLUDE DISTRICT SPECIAL PROVISION.
 2. INCLUDE STATE STANDARDS 602406, 602701 & 604036.
 3. THIS IS FOR SPECIAL APPLICATIONS: CHECK WITH YOUR PROJECT ENGINEER.

QUANTITIES	
CALC. BY:	DATE:
CHECKED BY:	DATE:
QUANTITY CALCULATIONS ARE ON FILE AT THE DISTRICT 4 OFFICE; BUREAU OF PROJECT IMPLEMENTATION; DOCUMENTATION SECTION	

01-01-97	RENUM. J-6.01, NEW REVISION BOX, REVISED TITLE BOX, NEW FORMAT, REVISED GENERAL NOTES, ADDED	T.P.
	DESIGNER NOTES, METRICS	
10-16-06	REVISED TO 2007 SPEC.	M.A.

STATE OF ILLINOIS
 DEPARTMENT OF TRANSPORTATION

DRYWELL

NOT TO SCALE

CADD STD. 602601-D4

All dimensions are in inches (millimeters) unless otherwise noted.

F.A. RTE.	SECTION	COUNTY	TOTAL SHEETS	SHEET NO.
CONTRACT NO.				
FED. ROAD DIST. NO. ILLINOIS FED. AID PROJECT				