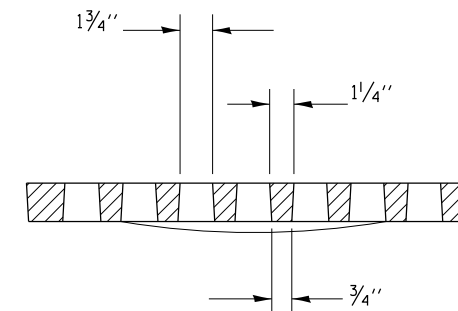
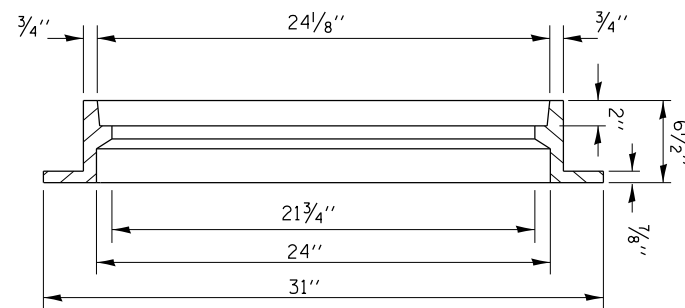
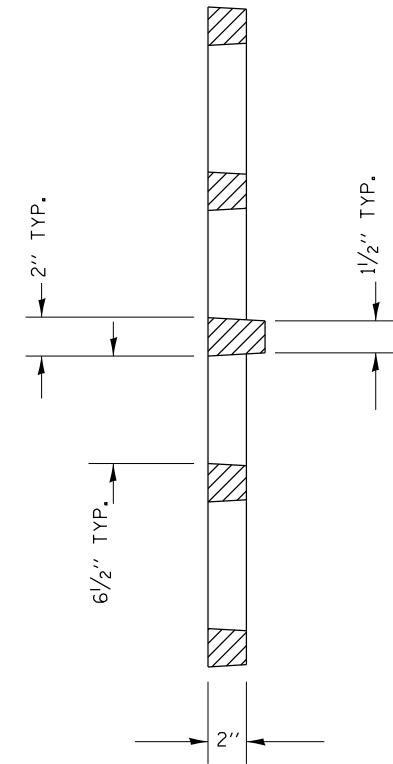
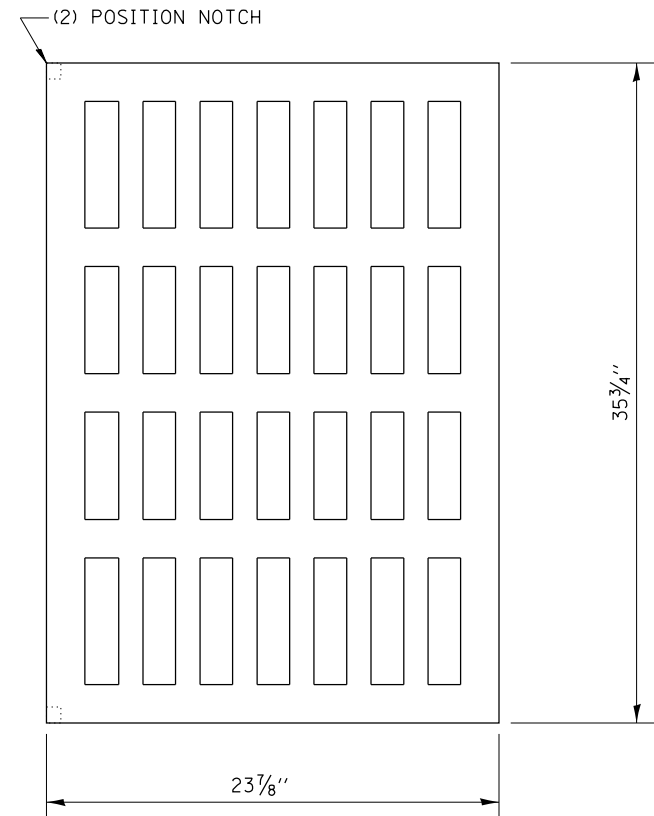
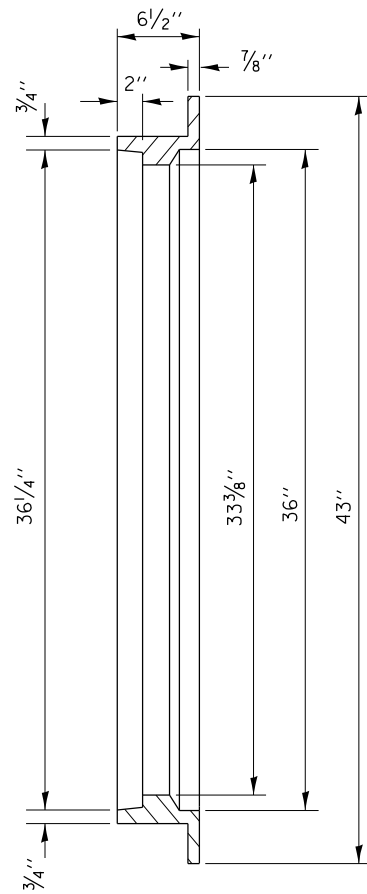
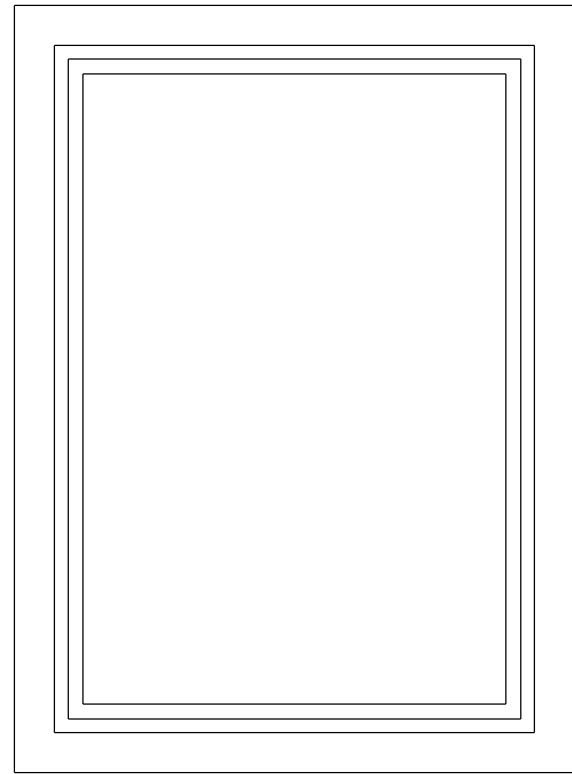


DESIGNER NOTES: 1. Include this standard District CADD Std. 602002-D4.  
 2. Frame & Grate included in cost of G-2 Inlet.  
 3. This drawing based upon "NEENAH" designs as follows: Inlet Frame: R-3454-B, Reversible Diagonal Grate: R-3246-A.



All dimensions are in inches (millimeters) unless otherwise noted.

10-99	NEW STANDARD	J.A.			
02-00	ADD NOTE & DESIGNER NOTES	J.A.			

STATE OF ILLINOIS  
DEPARTMENT OF TRANSPORTATION

FRAME AND GRATES FOR TYPE G-2 DRAINAGE STRUCTURES

NOT TO SCALE

CADD STD. 604002-D4

F.A. RTE.	SECTION	COUNTY	TOTAL SHEETS	SHEET NO.
CONTRACT NO.				
FED. ROAD DIST. NO. ILLINOIS FED. AID PROJECT				